



GRAND VIEWS
AT
MILLENNIUM
ESTATES

A Thoroughbred Lifestyle

GRAND VIEWS
AT
MILLENNIUM
ESTATES

A Thoroughbred Lifestyle

meydan



MEYDAN

A GLIMPSE INTO THE FAMED ARABIAN EQUESTRIAN HERITAGE

MEYDAN, AT NAD AL SHEBA IS THE VISION OF HIS HIGHNESS SHEIKH MOHAMMED BIN RASHID AL MAKTOUM, VICE PRESIDENT AND PRIME MINISTER OF THE UAE AND RULER OF DUBAI, TO CREATE NOT JUST THE ULTIMATE VENUE FOR HORSE BREEDING AND RACING, BUT AN INTEGRATED CITY THAT IS SUSTAINABLE, ENVIRONMENTALLY RESPONSIBLE AND ONE THAT POSITIONS DUBAI AT THE CENTRE OF THE COMPETITIVE GLOBAL BUSINESS STAGE.

HOME TO THE WORLD-RENOWNED GODOLPHIN STABLES, MEYDAN HOSTS FIVE MONTHS OF WORLD-CLASS THOROUGHBRED HORSERACING, WHICH CLIMAX IN MARCH WITH THE SPECTACULAR DUBAI WORLD CUP, THE WORLD'S RICHEST RACE DAY.

MEYDAN'S PREMIUM LEISURE AND HOSPITALITY EXPERIENCES INCLUDE THE MEYDAN HOTEL, BAB AL SHAMS DESERT RESORT & SPA, MEYDAN BEACH, MEYDAN GOLF, MEYDAN TENNIS ACADEMY AND THE MEYDAN IMAX THEATRE. THE ICONIC MEYDAN GRANDSTAND HOSTS REGULAR LIVE CONCERTS ATTRACTING THE BIGGEST NAMES FROM AROUND THE WORLD, AS WELL AS A BUSY CALENDAR OF EVENTS AND EXHIBITIONS.

SYNONYMOUS WITH LUXURY, PRESTIGE AND QUALITY, MEYDAN DEVELOPMENTS ARE A TRUE MARK OF EXCELLENCE FOR COMMERCIAL, RESIDENTIAL AND MIXED-USE REAL ESTATE ALIKE.



G&CO

THE ARCHITECTS OF THOROUGHbred LIFESTYLES

G&CO IS AMONGST THE PREMIUM REAL ESTATE DEVELOPING COMPANIES IN THE REGION, INVOLVED IN PLANNING AND DEVELOPING WORLD-CLASS MASTER COMMUNITIES. RECENTLY, THE COMPANY LAUNCHED ITS AMBITIOUS MILLENNIUM ESTATES COMMUNITY - A 1.5 BILLION AED PROJECT IN THE INNER CIRCLE OF MEYDAN, OFFERING 198 LUXURY VILLAS BUILT OVER 3.8 MILLION SQUARE FEET OF LAND.

ENCOURAGED BY THE SUCCESS OF MILLENNIUM ESTATES, G&CO ARE NOW LAUNCHING YET ANOTHER ULTRA-PREMIUM GATED COMMUNITY COMPRISING OF LUXURIOUS VILLAS AND SPRAWLING TOWNHOUSES.

A RACING LIFESTYLE UNLIKE ANY OTHER

COURSING THROUGH THE INNER CIRCLE OF MEYDAN, LIKE THE PASSIONATE LOVE FOR ARABIAN THOROUGHBREDS FLOWING THROUGH THE VEINS OF THE EMIRATIS, NOW COMES A DISTINCTIVE COMMUNITY THAT WILL SET THE PACE IN HIGH-CLASS LUXURY LIVING.





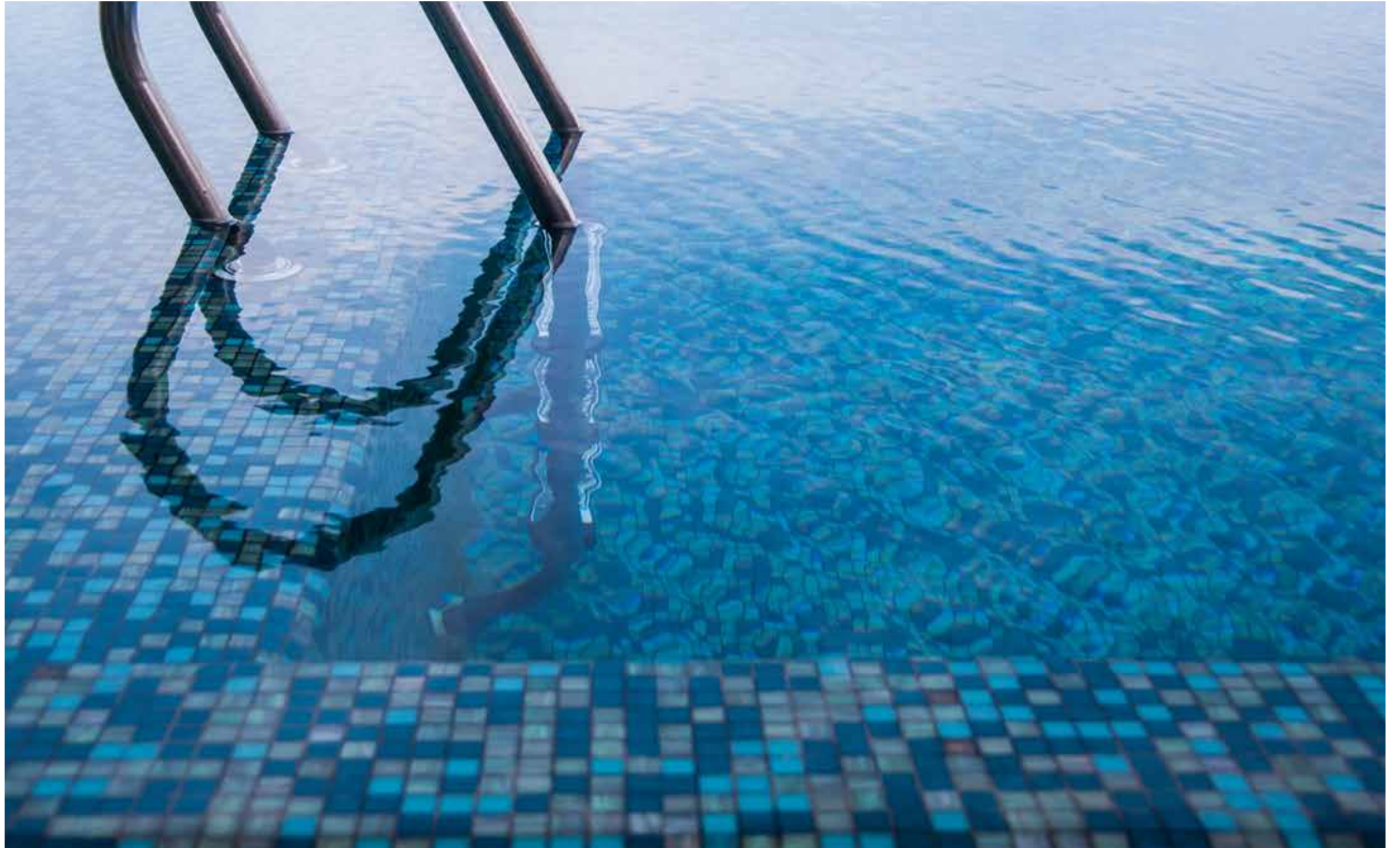
PRESENTING GRAND VIEWS AT MILLENNIUM ESTATES

GRAND VIEWS IS THE CITY'S NEWEST COMMUNITY COMPRISING 476 LUXURIOUS TOWNHOUSES AND VILLAS. OFFERING SPECTACULAR VIEWS OF THE GRAND STAND, WHERE DUBAI WORLD CUP - THE MOST PRESTIGIOUS AND RICHEST HORSE RACING EVENT IN THE WORLD, ATTRACTS THE MOST DISCERNING ENTHUSIASTS WORLDWIDE.

GRAND VIEWS OFFERS THE BEST OF FINE SUBURBAN LIVING WITH THE CONVENIENCE OF NEARBY URBAN DESTINATIONS - INCLUDING DIFC, DOWNTOWN DUBAI AND A DIRECT LINK TO SHEIKH ZAYED ROAD. MODERN, SLEEK AND COMPLETE WITH EXQUISITE FINISHES, LIVE AT THE MOST PULSATING ADDRESS IN TOWN.



STATE-OF-THE-ART AMENITIES
INCORPORATING COMMUNITY-BASED
FACILITIES MAKE FOR A LIFESTYLE
THAT TRANSCENDS EVEN THE
EXTRAORDINARY.



EVERY VILLA AT THE GRAND VIEWS
COMES WITH THE MOST LUXURIOUS OF
ALL CONVENIENCES - AN IN-BUILT
PRIVATE ELEVATOR FOR THE G+2 FLOORS



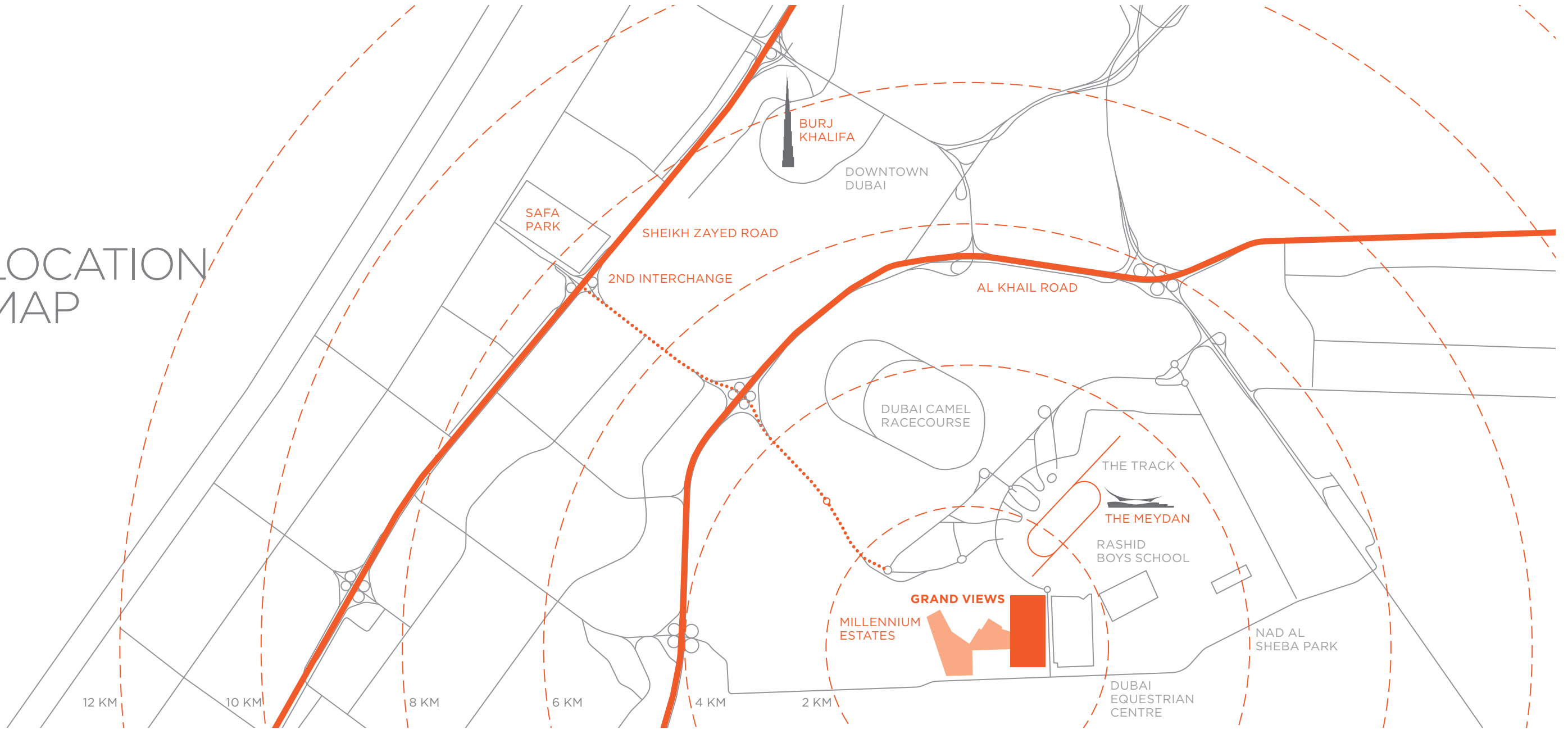
DISCOVER OPENNESS THAT'S CLOSE TO YOUR HEART

GRAND VIEWS ENCAPSULATES A HARMONIOUS BLEND OF DISTINCTIVE LIFESTYLE WITH OPULENT VILLAS AND WIDE-OPEN SPACES EFFORTLESSLY INTERWOVEN TO FORM A SEAMLESS WORLD

OF EXISTENCE. FOR THOSE LOOKING TO LIVE IN GLAMOROUS, EXCLUSIVE SURROUNDINGS, ENJOY BREATHTAKING NATURE, THIS OPULENT COMMUNITY IS THE PLACE THAT REDEFINES ELITE LIVING.



LOCATION MAP



THE VILLAS

A TRIBUTE TO THOSE WHO WORSHIP AT THE ALTAR OF LUXURY

THE VILLAS AT GRAND VIEWS ARE INSPIRED BY THE VERY BEST OF INTERNATIONAL ARCHITECTURAL DESIGNS, RESONATING A UNIQUE MIX OF FORM AND FUNCTION. HERE, YOU CAN CHOOSE FROM 176 GLAMOROUS 6-BEDROOM UNITS THAT START FROM 6,000 SQ FT., EACH PROMISING DISTINCTIVE CHARACTERS THAT MATCH YOUR OWN TASTE AND LIFESTYLE.

EACH G+2 STORIED VILLA BOASTS OF ITS OWN PRIVATE ELEVATOR, MAID'S ROOM, DRIVER'S ROOM, FULLY EQUIPPED MODULAR KITCHEN AND CONTEMPORARY FINISHES THAT SET THE STANDARD IN LUXURIOUS LIVING.





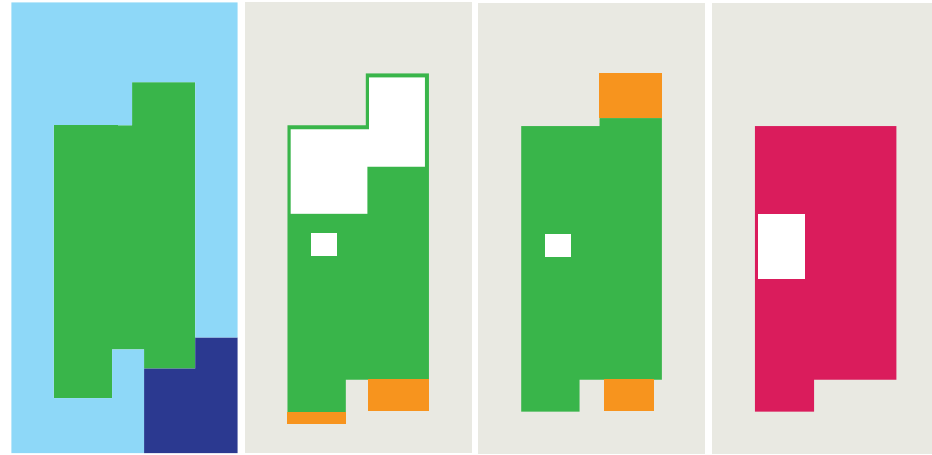
FRONT VIEW








REAR VIEW



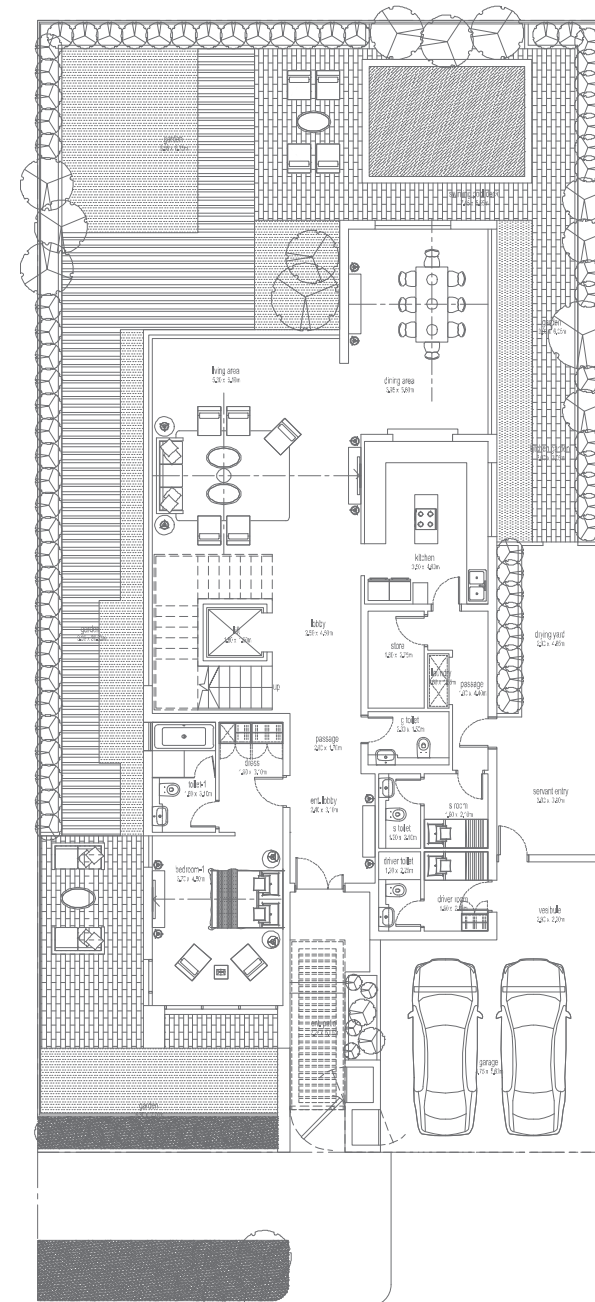
AREA DIAGRAM - THE VILLAS



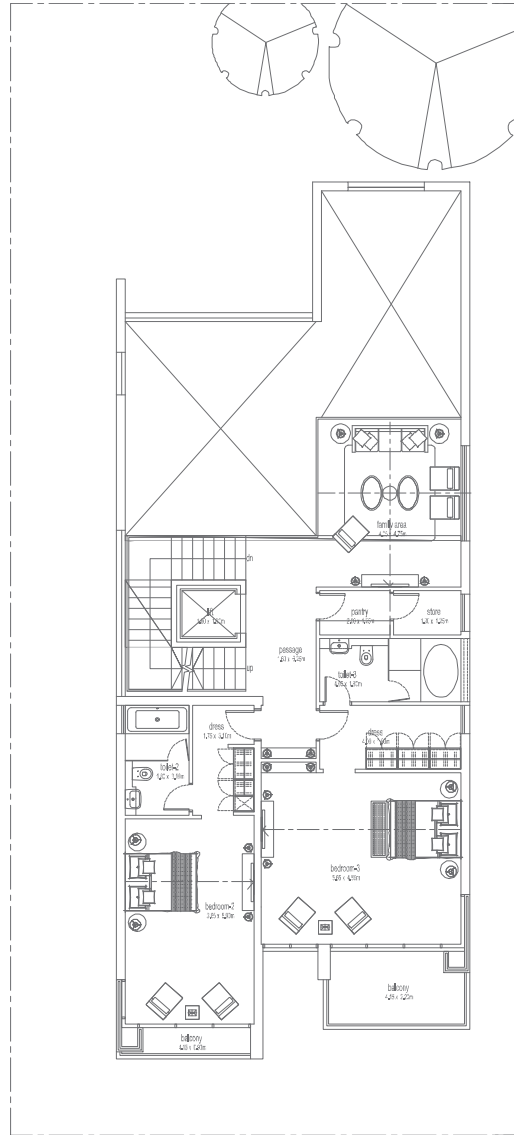
GROUND FLOOR FIRST FLOOR SECOND FLOOR TERRACE FLOOR

 BUILT-UP AREA	526.79 S.M.
 BALCONY AREA	34.71 S.M.
TOTAL AREA	561.50 S.M.
 ROOF TERRACE AREA	174.36 S.M.
 GARAGE AREA	46.25 S.M.
 LANDSCAPE AREA	273.78 S.M.

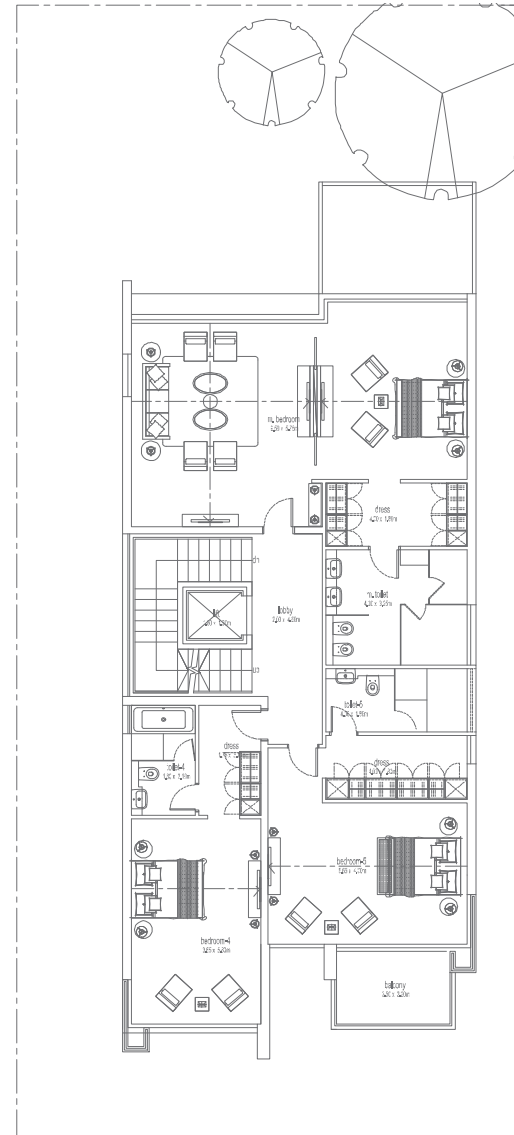
THE FIGURES INDICATED ARE APPROXIMATE AND FOR ILLUSTRATION PURPOSES ONLY.



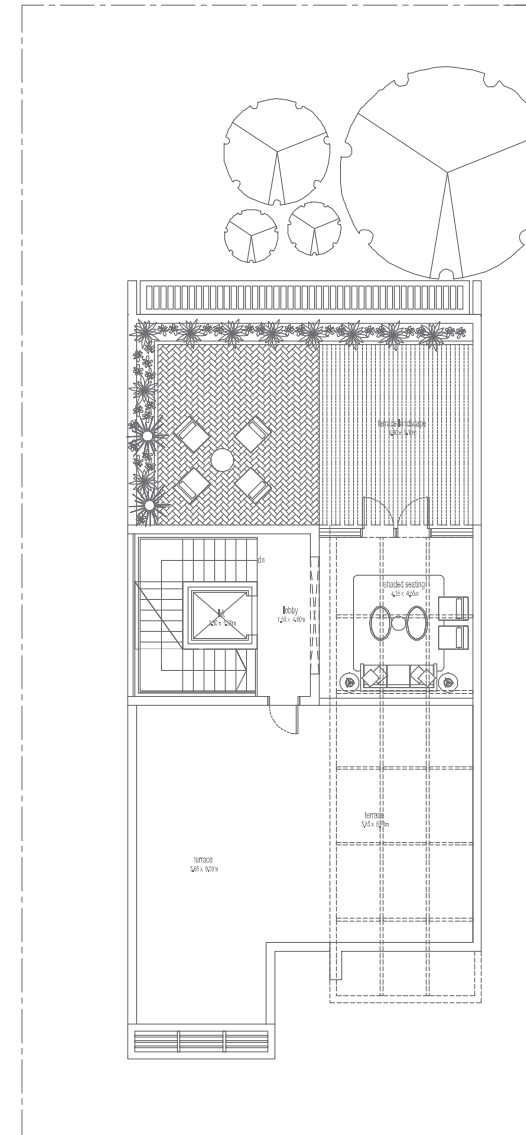
GROUND FLOOR



FIRST FLOOR



SECOND FLOOR



TERRACE FLOOR

WATCH YOUR ASPIRATIONS TURN INTO REALITY, WITH SPF REALTY

WHEN IT COMES TO RESIDENTIAL OR
COMMERCIAL, APARTMENT OR VILLA, NO
MATTER WHAT YOUR CHOICE IS, YOU CAN BE
CONFIDENT THAT SPF REALTY CAN FULFILL
YOUR REQUIREMENT THROUGH OUR

EXTENSIVE UNDERSTANDING OF THE
MARKET AND OUR WIDE-RANGING
EXPERTISE IN PROPERTY INVESTMENT
MANAGEMENT.







GRAND VIEWS
AT
MILLENNIUM
ESTATES

A Thoroughbred Lifestyle
