

DCI

F O R
V I S I O N A R I E S
O N L Y

CAN YOU SEE
WHAT OTHERS
DON'T?





CAN YOU
SEE WHERE
THE FUTURE
MOVES?

CAN YOU SEE
FROM A DIFFERENT
PERSPECTIVE?



Y O U A R E O N E O F U S





DGI

MEET THE VISIONARIES

1. Future is not something we can imagine. It's something we can shape.

2. Visionaries are the ones who can perceive the changing pace of history before anyone else.

3. They can see what happens next because they are the ones who make it happen.

4. Trendsetters, innovators, groundbreakers. If you are one of us, this is for you.

THIS IS NOT
ANOTHER TOWER BY
THE DUBAI CANAL.

THIS IS THE ONE.
THIS IS DG1.



DG1

DG1 is the first tower of its kind designed by DarGlobal, the visionary brand that was among the first to introduce luxury brands into living spaces in Dubai.



automobili
Lamborghini

W
HOTELS
WORLDWIDE

MISSONI

ELIE SAAB

VERSACE
HOME

TRUMP
THE TRUMP ORGANIZATION

PAGANI

THE FIRST OF ITS KIND



DG1 represents the FIRST of a series of exclusive luxury residences with the ultimate architecture, the ultimate Location and the ultimate interior specifications.





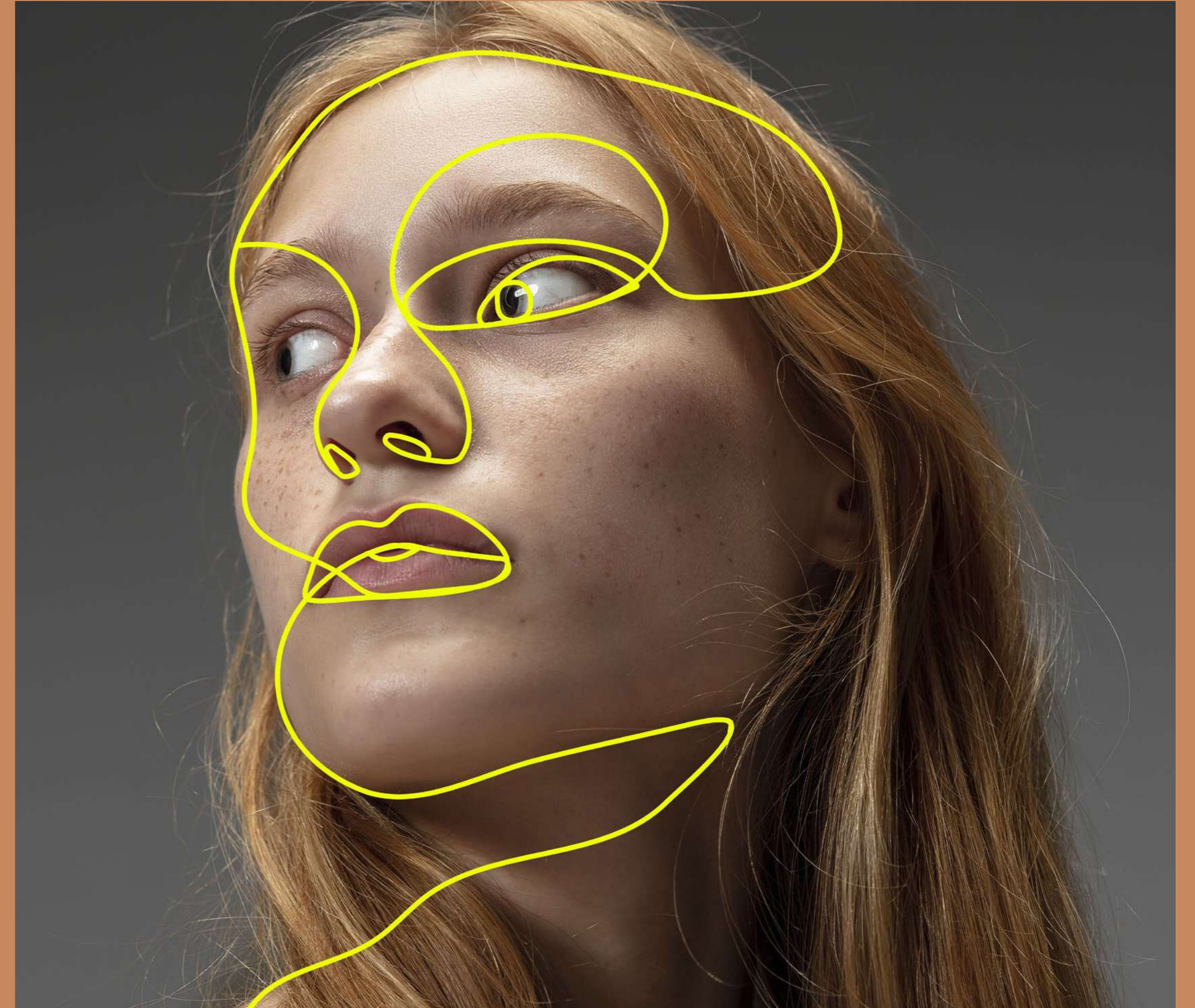
DYNAMIC AESTHETICS

The architecture of DG1 fully reflects its dynamic attitude. Like an haute couture creation, its distinctive twisting profile, it opens the doors of imagination, inspiring each of us in a different way.



A PIECE OF ART

DG1 stands out from the panorama since it recalls a piece of art rather than a conventional tower. It's a shape that reshapes the city around it. A sculpture to inhabit, a monument to living.





T H E C H A R M O F
E X C L U S I V E N E S S

Exquisite things are made for a few. DG1 is conceived as a low-density project, a human-scale that enhances the spaces and highlights a dedicated attention to details and to inhabitants.



C R A F T E D B Y
G E N S L E R
A R C H I T E C T S

The architecture fully reflects the dynamic attitude of DG1. Standing out from the cluttered panorama as it recalls a piece of art rather than a conventional tower.

Crafted by Gensler Architects, the most avantgarde designers of our time, the DG1 tower embodies a shape that reshapes the city around it. A sculpture to inhabit, giving every floor a new perspective of the world.





C A N Y O U S E E F R O M A D I F F E R E N T P E R S P E C T I V E ?





A D I F F E R E N T V I E W

DG1 is located in the heart of Business Bay directly on Dubai Canal, where stunning views of the city and the water will impress the residents and their guests. The units enjoy North and East/ West views, all of them facing Downtown Dubai and Burj Khalifa.

BURJ KHALIFA &
DOWNTOWN VIEWS





NORTH-EAST DAY VIEW



NORTH-EAST NIGHT VIEW



NORTH-WEST NIGHT VIEW



LOCATION

The strategic location of DG1 grants an unbelievable proximity to all that matters. With Burj Khalifa, Dubai Mall and Dubai Opera just a few steps away, and easy access to main roads like Sheikh Zayed Rd, Al Khail Rd and Meydan Rd, DG1 truly embodies the vibrant soul of the city.

- 4 MIN TO URBAN OASIS BY MISSONI
- 4 MIN TO HILTON HOTEL DUBAI
- 4 MIN TO JW MARRIOTT DUBAI
- 5 MIN TO THE DUBAI OPERA
- 5 MIN TO DAVINCI TOWER BY PAGANI
- 6 MIN TO BURJ KHALIFA
- 6 MIN TO THE DUBAI MALL
- 6 MIN TO THE DORCHESTER DUBAI
- 7 MIN TO W RESIDENCES DUBAI - DOWNTOWN
- 9 MIN TO SOUK AL BAHAR
- 12 MIN TO DUBAI INTERNATIONAL AIRPORT









T H E W O N D E R

I N S I D E

In the building, a great variety of residences in terms of spaces and sizes is conceived to satisfy every kind of need. Style, comfort and luxury are what make these apartments truly unique: decorated with a classy and contemporary taste, each with a private balcony to enjoy the impressive views.





THE SPACE INSIDE DG1 HAS
BEEN DESIGNED AND CRAFTED
TO THE HIGHEST STANDARDS,
IN ORDER TO OFFER A TRULY
UNIQUE & PREMIUM LIVING
EXPERIENCE.







MARVEL IS NOT A DETAIL



The materials and the finishings that compose the residential units are of the finest quality and standard. European marble floors and european bathroom fixtures underline the superior class of these spaces, as well as the stylish European kitchens.



THE ULTIMATE
PREMIUM
AMENITIES





DELVE INTO
THE INFINITY
POOL DIRECTLY
BY THE CANAL

The Infinity pool at DG1 is a tranquil experience like no other, situated next to a children play area. Directly overlooking the Dubai Canal, you will feel as though your midday swim is a getaway around the canal.



S K Y

G A R D E N

Get away from the urban jungle and immerse yourself in the enchanting Sky Garden on the rooftop. Located on level 16, this is a peaceful nest to reconnect with nature.



I N N E R P E A C E

There's no need to travel far in order to find real peace of mind.

A yoga studio in the building will be at disposal of residents who are looking for a workout or a meditation session, without leaving their home.

STATE OF THE ART GYM AND RECREATIONAL SPACES

With open views of lush green spaces, the distinctive gym is fully equipped with everything one desires to refuel for the day ahead.



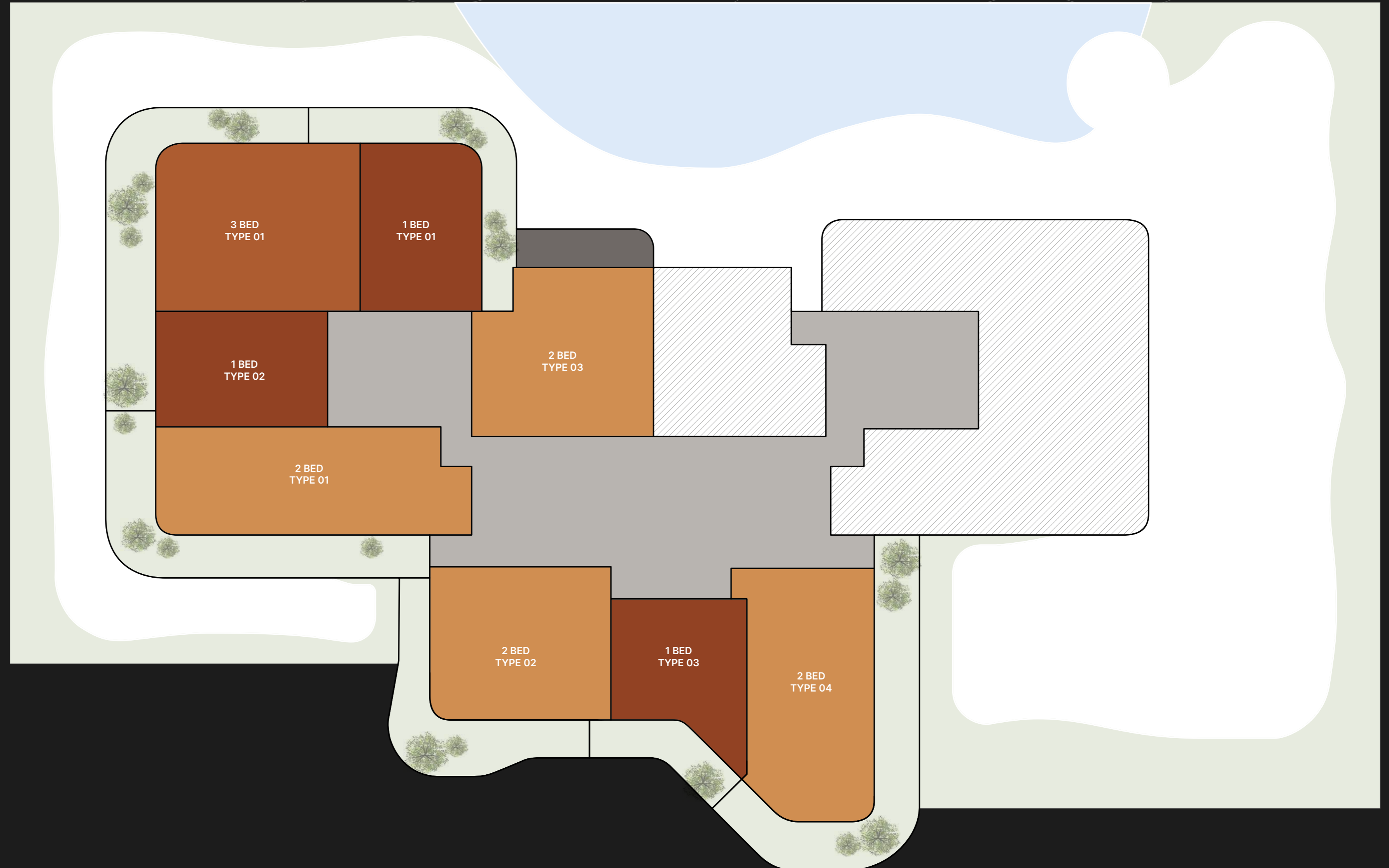
DG1

F L O O R P L A N S



TYPICAL FLOOR PLAN GARDEN SUITES

LEVEL 01



- ONE BEDROOM
- TWO BEDROOMS
- THREE BEDROOMS

Disclaimer: All pictures, plans, layouts, information, data and details included in this brochure are indicative only and may change at any time up to the final 'as built' status in accordance with final designs of the project, regulatory approvals and planning permissions. All accessories and interior finishes such as wallpaper, chandeliers, furniture, electronics, white goods, curtains, hard and soft landscaping, pavements, features, gym, swimming pool(s) and other elements displayed in the brochure, or within the show apartment or between the plot boundary and the unit, are not part of the unit and are shown for illustrative purposes only.

TYPICAL
FLOOR PLAN
GARDEN SUITES

LEVEL
01



- ONE BEDROOM
- TWO BEDROOMS
- THREE BEDROOMS

Disclaimer: All pictures, plans, layouts, information, data and details included in this brochure are indicative only and may change at any time up to the final 'as built' status in accordance with final designs of the project, regulatory approvals and planning permissions. All accessories and interior finishes such as wallpaper, chandeliers, furniture, electronics, white goods, curtains, hard and soft landscaping, pavements, features, gym, swimming pool(s) and other elements displayed in the brochure, or within the show apartment or between the plot boundary and the unit, are not part of the unit and are shown for illustrative purposes only.



DUBAI CANAL

TYPICAL
FLOOR PLAN
01A

LEVELS

02 - 04 , 09 - 12



PARTIAL
VIEWS

PARTIAL
VIEWS

CITY VIEWS

- ONE BEDROOM
- TWO BEDROOMS
- THREE BEDROOMS

Disclaimer: All pictures, plans, layouts, information, data and details included in this brochure are indicative only and may change at any time up to the final 'as built' status in accordance with final designs of the project, regulatory approvals and planning permissions. All accessories and interior finishes such as wallpaper, chandeliers, furniture, electronics, white goods, curtains, hard and soft landscaping, pavements, features, gym, swimming pool(s) and other elements displayed in the brochure, or within the show apartment or between the plot boundary and the unit, are not part of the unit and are shown for illustrative purposes only.

TYPICAL FLOOR PLAN 01A

LEVELS
02 - 04 , 09 - 12



- ONE BEDROOM
- TWO BEDROOMS
- THREE BEDROOMS

Disclaimer: All pictures, plans, layouts, information, data and details included in this brochure are indicative only and may change at any time up to the final 'as built' status in accordance with final designs of the project, regulatory approvals and planning permissions. All accessories and interior finishes such as wallpaper, chandeliers, furniture, electronics, white goods, curtains, hard and soft landscaping, pavements, features, gym, swimming pool(s) and other elements displayed in the brochure, or within the show apartment or between the plot boundary and the unit, are not part of the unit and are shown for illustrative purposes only.



PARTIAL
VIEWS

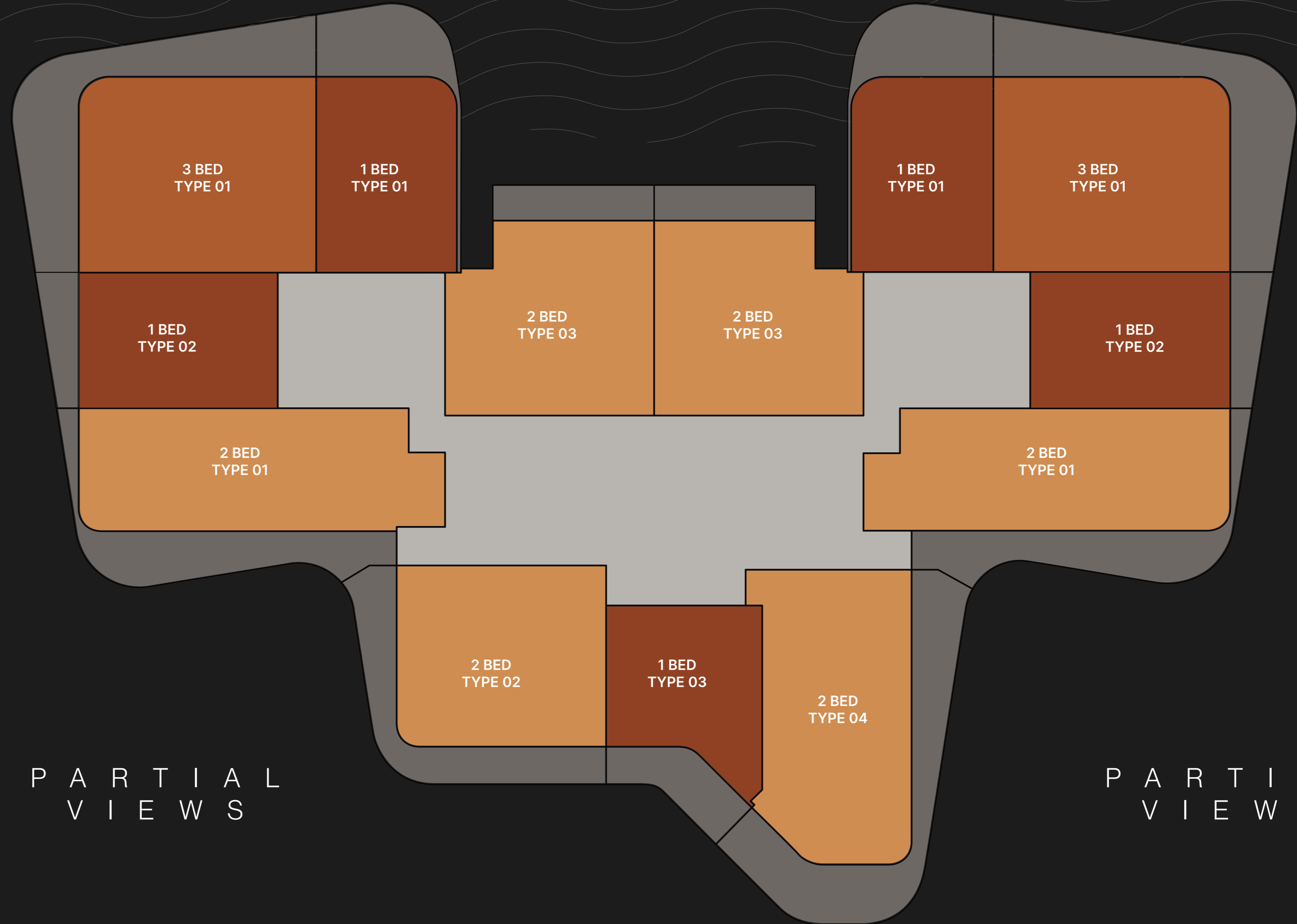
PARTIAL
VIEWS

CITY VIEWS

DUBAI CANAL

TYPICAL FLOOR PLAN 01B

LEVELS
05 - 08 , 13 - 15



PARTIAL
VIEWS

PARTIAL
VIEWS

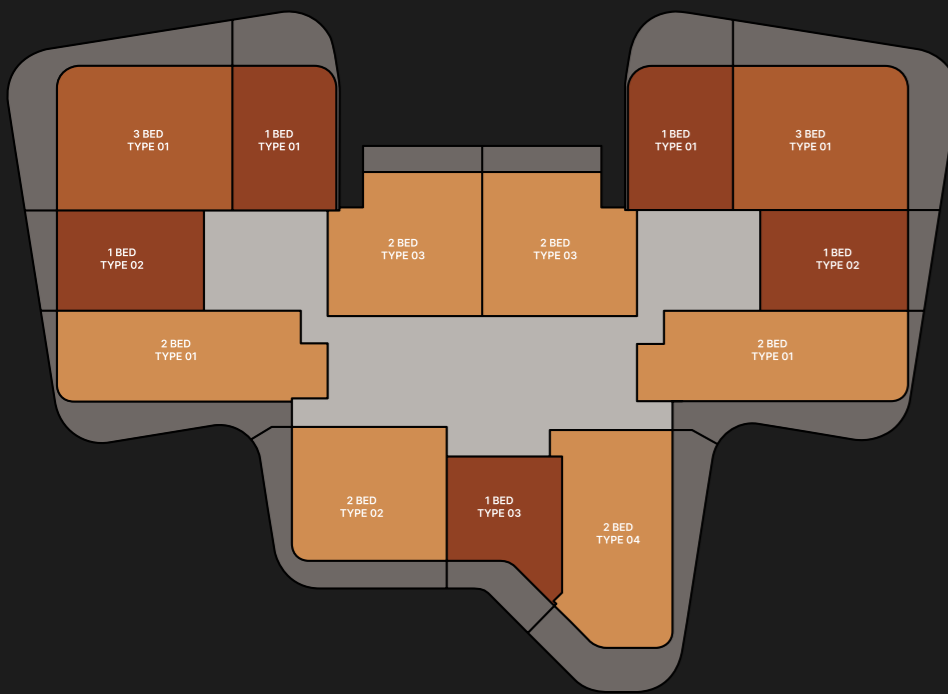
CITY VIEWS

- ONE BEDROOM
- TWO BEDROOMS
- THREE BEDROOMS

Disclaimer: All pictures, plans, layouts, information, data and details included in this brochure are indicative only and may change at any time up to the final 'as built' status in accordance with final designs of the project, regulatory approvals and planning permissions. All accessories and interior finishes such as wallpaper, chandeliers, furniture, electronics, white goods, curtains, hard and soft landscaping, pavements, features, gym, swimming pool(s) and other elements displayed in the brochure, or within the show apartment or between the plot boundary and the unit, are not part of the unit and are shown for illustrative purposes only.

TYPICAL
FLOOR PLAN
01B

LEVELS
05 - 08, 13 - 15



- ONE BEDROOM
- TWO BEDROOMS
- THREE BEDROOMS

Disclaimer: All pictures, plans, layouts, information, data and details included in this brochure are indicative only and may change at any time up to the final 'as built' status in accordance with final designs of the project, regulatory approvals and planning permissions. All accessories and interior finishes such as wallpaper, chandeliers, furniture, electronics, white goods, curtains, hard and soft landscaping, pavements, features, gym, swimming pool(s) and other elements displayed in the brochure, or within the show apartment or between the plot boundary and the unit, are not part of the unit and are shown for illustrative purposes only.



PARTIAL
VIEWS

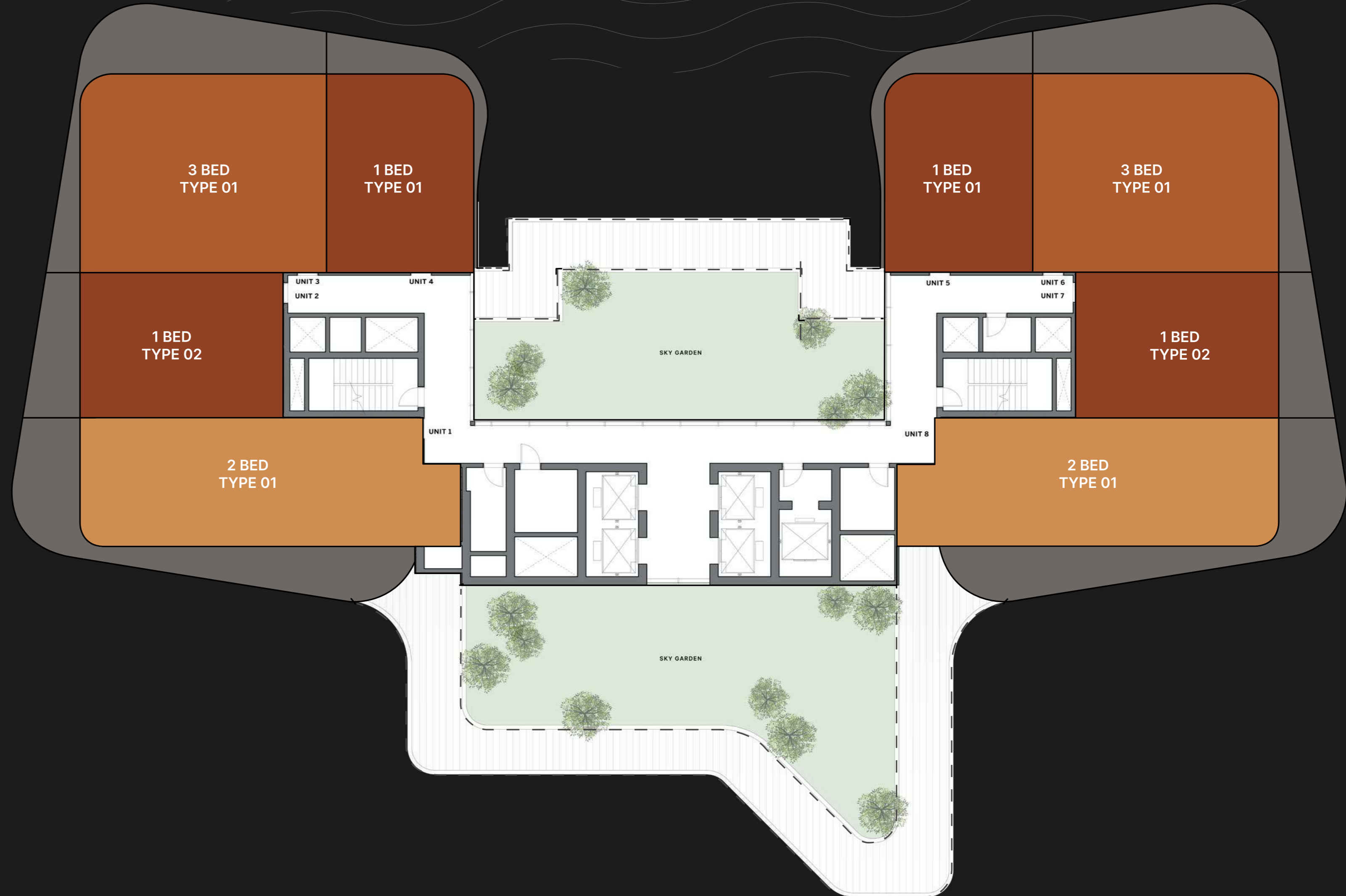
PARTIAL
VIEWS

TYPICAL FLOOR PLAN SKY SUITES

LEVELS
16-19

LEVEL 16:
DIRECT ACCESS TO
THE SKY GARDEN

LEVELS 17-19:
OVERLOOKING
THE SKY GARDEN



- ONE BEDROOM
- TWO BEDROOMS
- THREE BEDROOMS

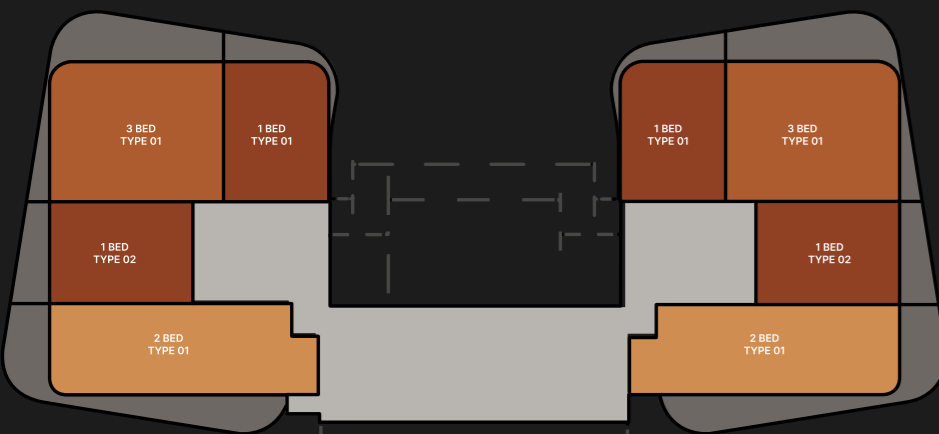
Disclaimer: All pictures, plans, layouts, information, data and details included in this brochure are indicative only and may change at any time up to the final 'as built' status in accordance with final designs of the project, regulatory approvals and planning permissions. All accessories and interior finishes such as wallpaper, chandeliers, furniture, electronics, white goods, curtains, hard and soft landscaping, pavements, features, gym, swimming pool(s) and other elements displayed in the brochure, or within the show apartment or between the plot boundary and the unit, are not part of the unit and are shown for illustrative purposes only.

TYPICAL FLOOR PLAN SKY SUITES

LEVELS
16 - 19

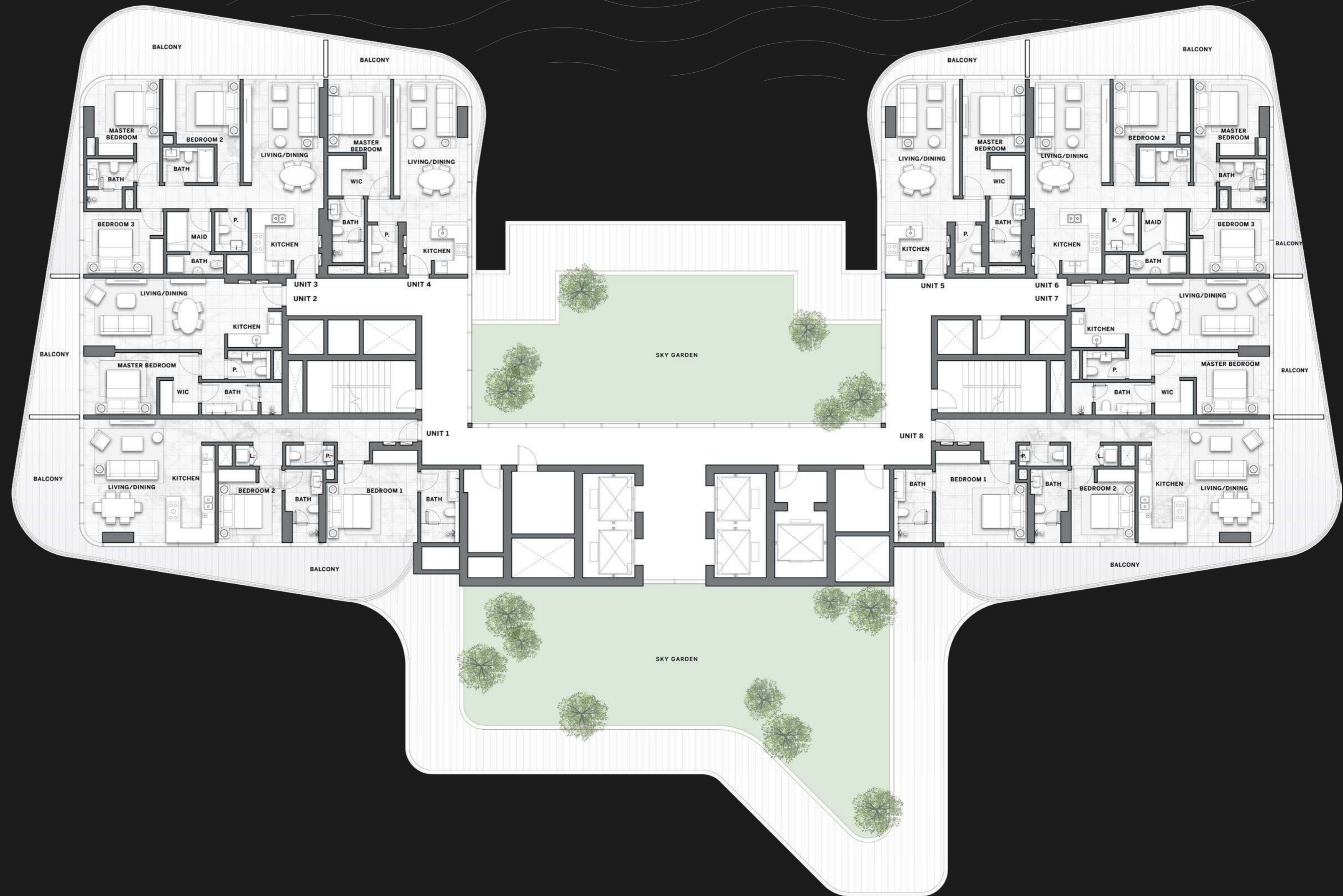
LEVEL 16:
DIRECT ACCESS TO
THE SKY GARDEN

LEVELS 17-19:
OVERLOOKING
THE SKY GARDEN



- ONE BEDROOM
- TWO BEDROOMS
- THREE BEDROOMS

Disclaimer: All pictures, plans, layouts, information, data and details included in this brochure are indicative only and may change at any time up to the final 'as built' status in accordance with final designs of the project, regulatory approvals and planning permissions. All accessories and interior finishes such as wallpaper, chandeliers, furniture, electronics, white goods, curtains, hard and soft landscaping, pavements, features, gym, swimming pool(s) and other elements displayed in the brochure, or within the show apartment or between the plot boundary and the unit, are not part of the unit and are shown for illustrative purposes only.



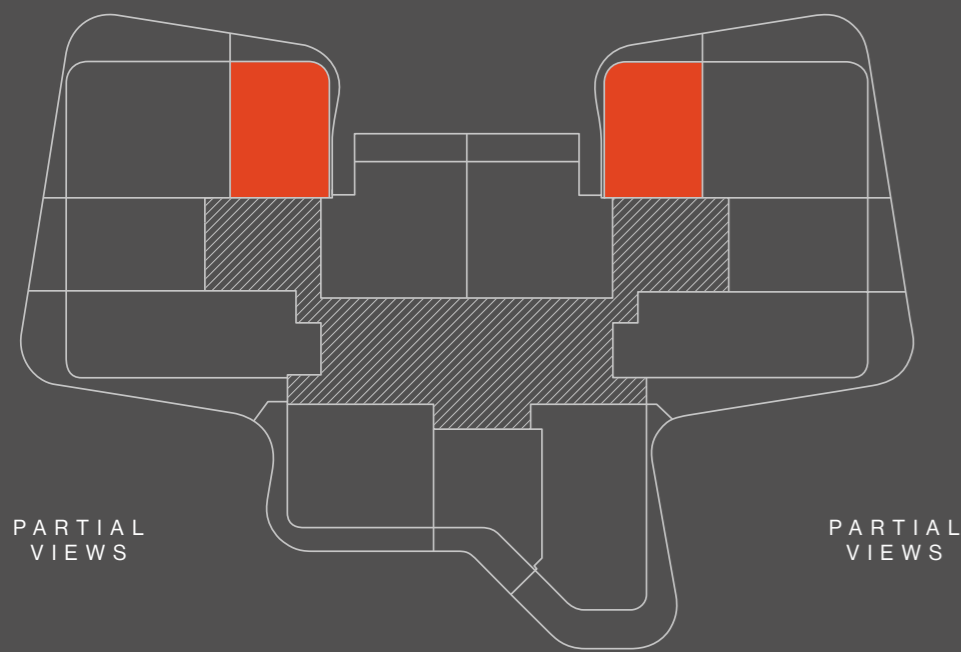
**1-BED
TYPE 01**

LEVELS
1 - 19

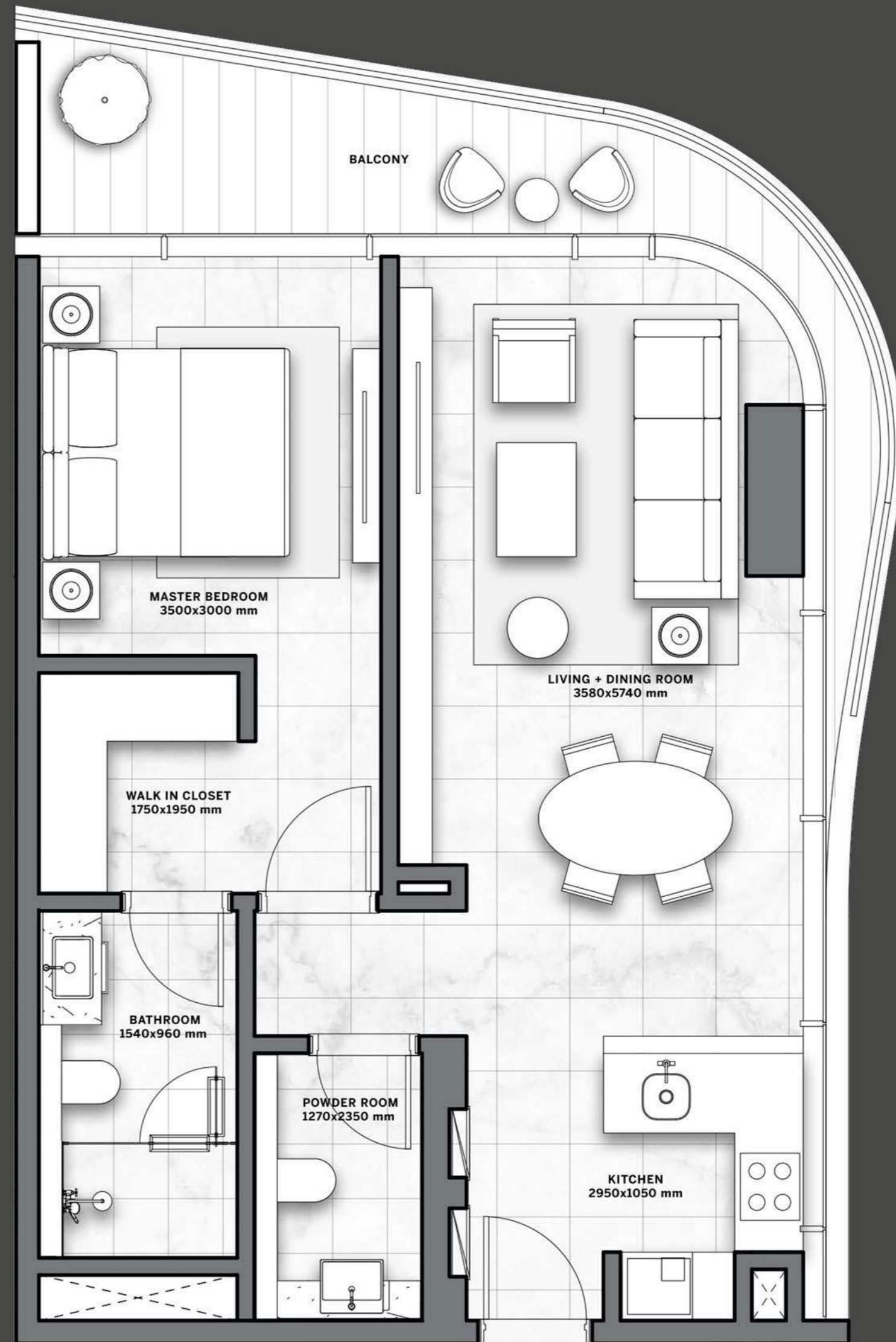


BURJ KHALIFA

DUBAI CANAL



CITY VIEWS

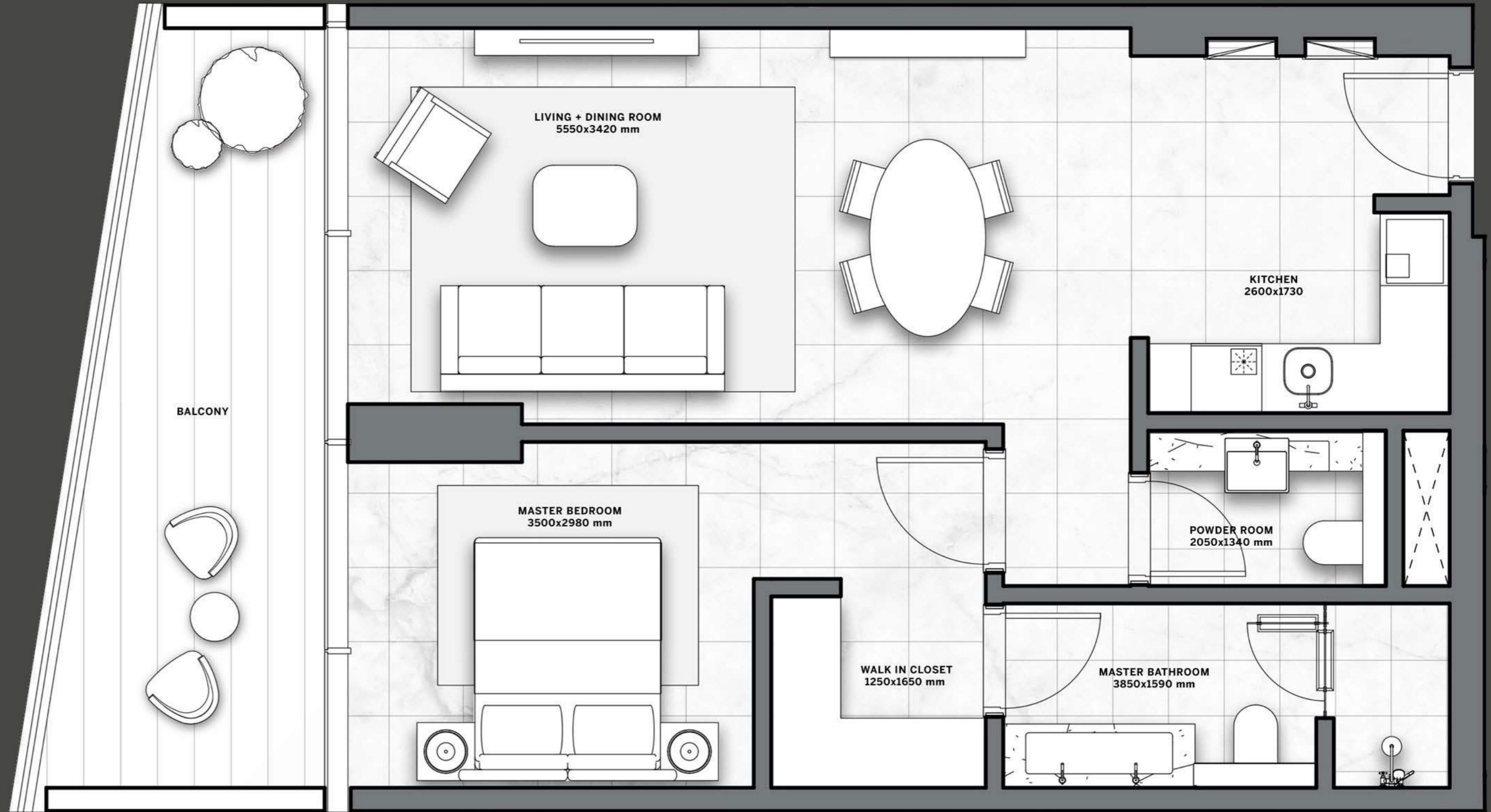
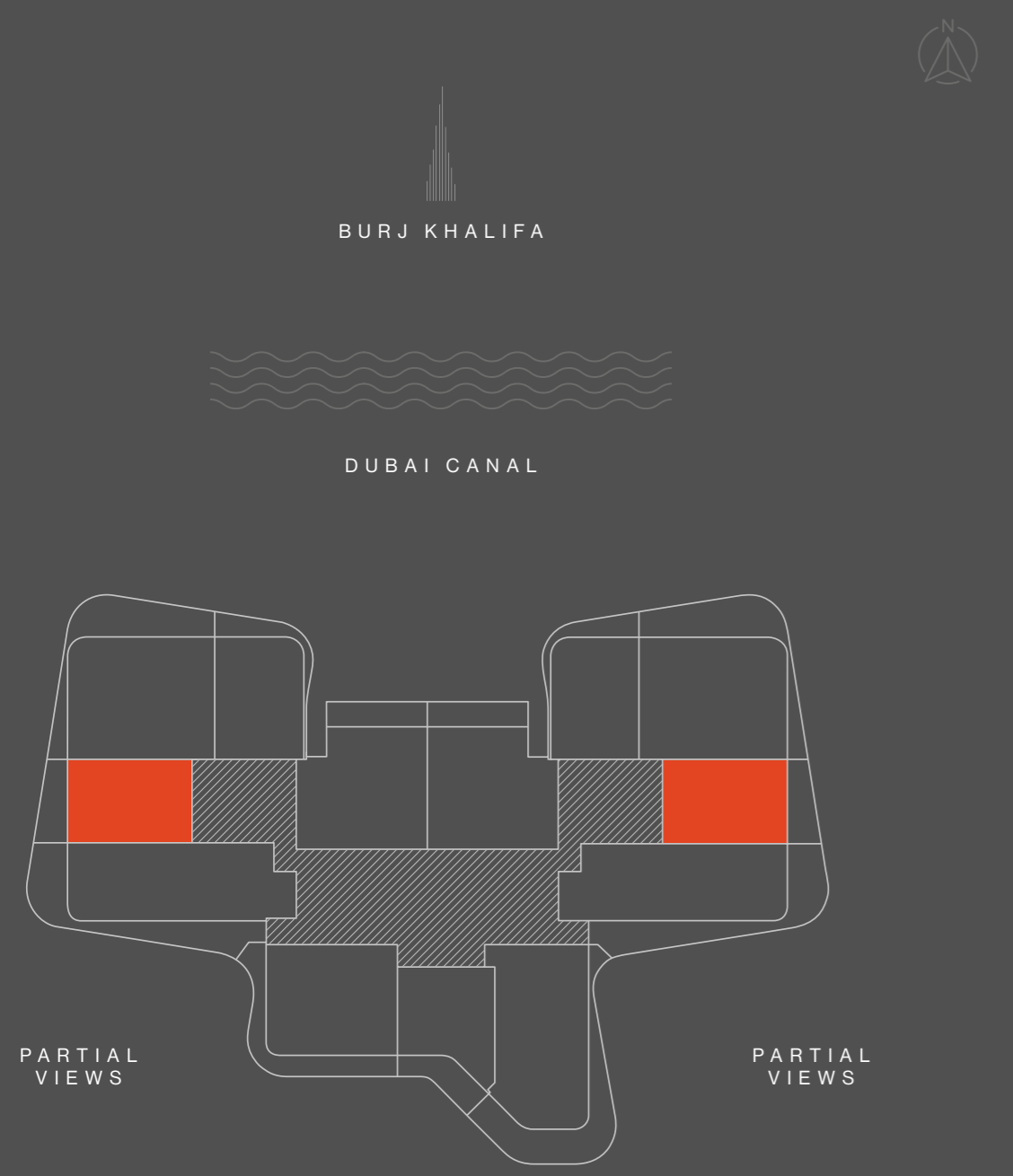


INTERNAL AREA	sqm 66	sqft 710
BALCONY	sqm 10 - 22	sqft 108 - 237
TOTAL	sqm 76 - 88	sqft 818 - 947

Disclaimer: All pictures, plans, layouts, information, data and details included in this brochure are indicative only and may change at any time up to the final 'as built' status in accordance with final designs of the project, regulatory approvals and planning permissions. All accessories and interior finishes such as wallpaper, chandeliers, furniture, electronics, white goods, curtains, hard and soft landscaping, pavements, features, gym, swimming pool(s) and other elements displayed in the brochure, or within the show apartment or between the plot boundary and the unit, are not part of the unit and are shown for illustrative purposes only.

**1-BED
TYPE 02**

LEVELS
1 - 19

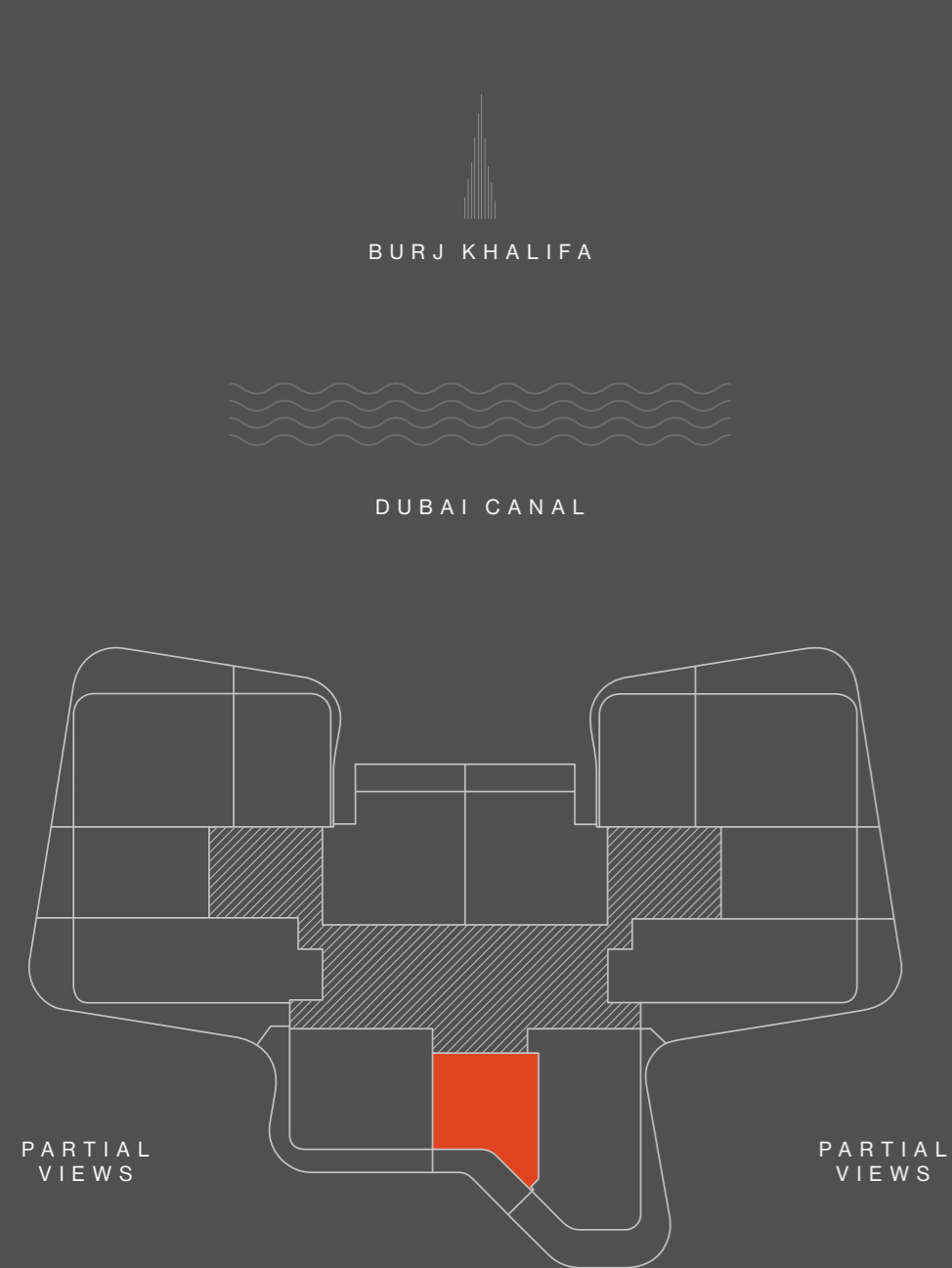


INTERNAL AREA	sqm 66	sqft 710
BALCONY	sqm 13 - 15	sqft 140 - 161
TOTAL	sqm 79 - 81	sqft 850 - 871

Disclaimer: All pictures, plans, layouts, information, data and details included in this brochure are indicative only and may change at any time up to the final 'as built' status in accordance with final designs of the project, regulatory approvals and planning permissions. All accessories and interior finishes such as wallpaper, chandeliers, furniture, electronics, white goods, curtains, hard and soft landscaping, pavements, features, gym, swimming pool(s) and other elements displayed in the brochure, or within the show apartment or between the plot boundary and the unit, are not part of the unit and are shown for illustrative purposes only.

**1-BED
TYPE 03**

LEVELS
1 - 15



INTERNAL AREA	sqm 60	sqft 646
BALCONY	sqm 14 - 15	sqft 151 - 161
TOTAL	sqm 74 - 75	sqft 797 - 807

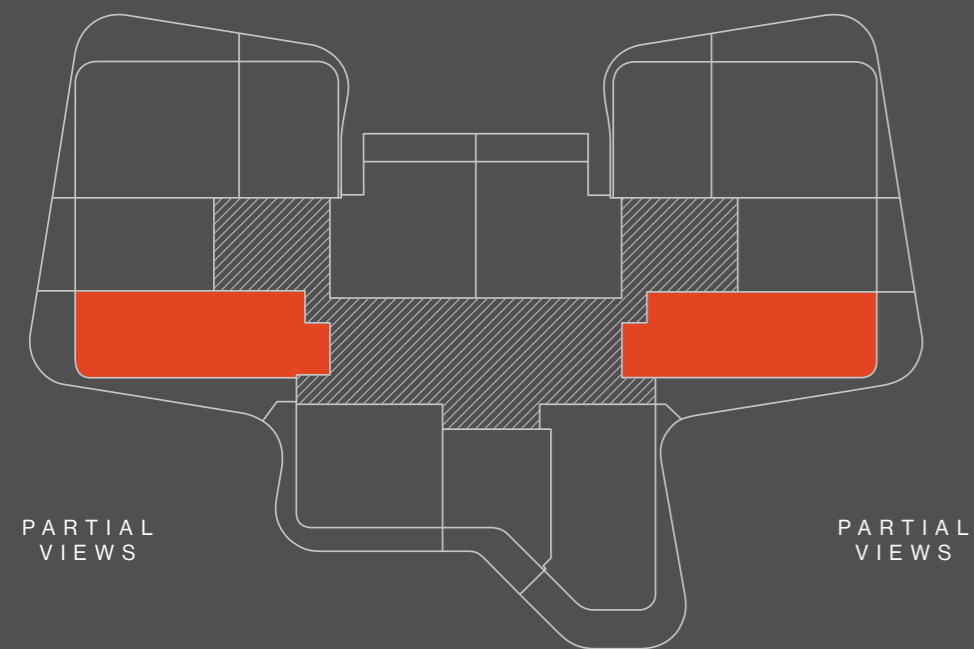
Disclaimer: All pictures, plans, layouts, information, data and details included in this brochure are indicative only and may change at any time up to the final 'as built' status in accordance with final designs of the project, regulatory approvals and planning permissions. All accessories and interior finishes such as wallpaper, chandeliers, furniture, electronics, white goods, curtains, hard and soft landscaping, pavements, features, gym, swimming pool(s) and other elements displayed in the brochure, or within the show apartment or between the plot boundary and the unit, are not part of the unit and are shown for illustrative purposes only.

2-BEDS
TYPE 01

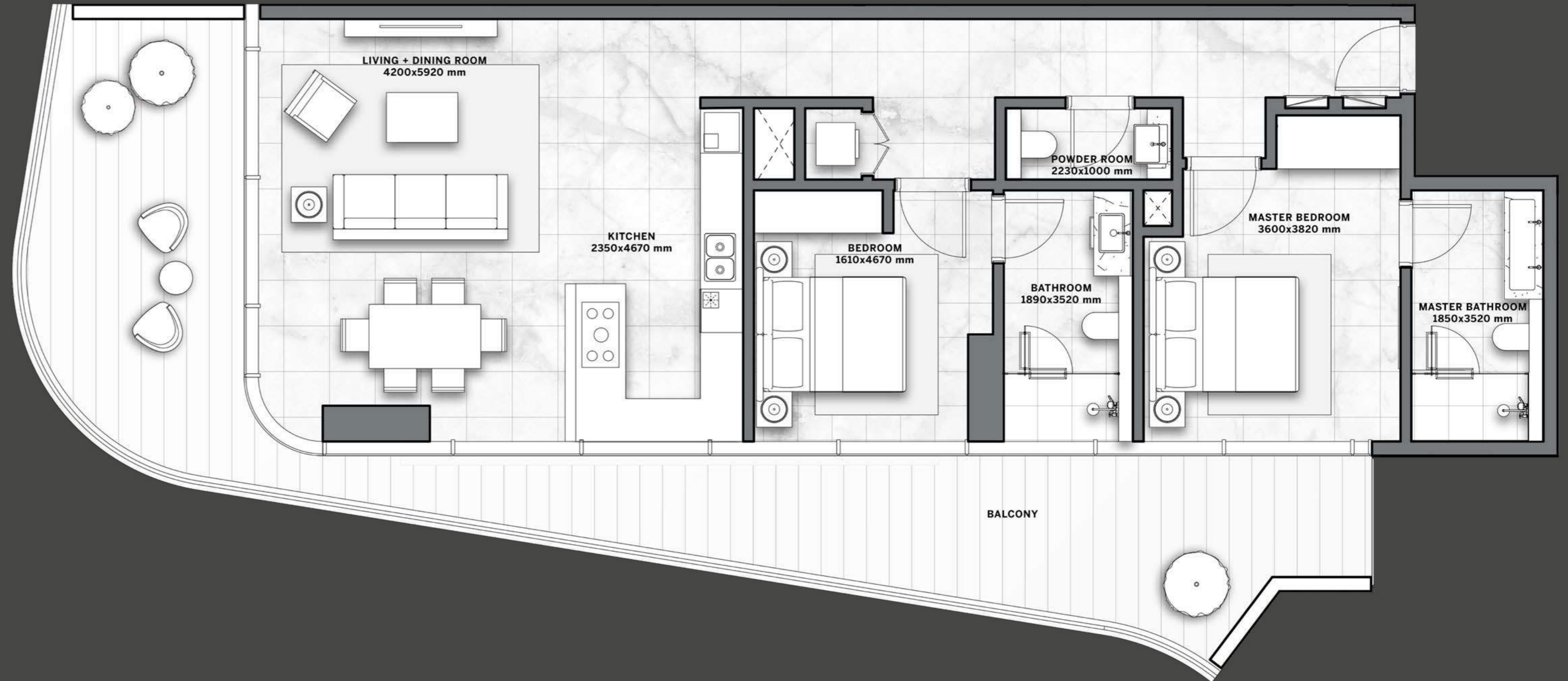
LEVELS
1 - 19

BURJ KHALIFA

DUBAI CANAL



CITY VIEWS



INTERNAL AREA	sqm 108	sqft 1163
BALCONY	sqm 29 - 42	sqft 312 - 452
TOTAL	sqm 137 - 150	sqft 1,475 - 1,615

Disclaimer: All pictures, plans, layouts, information, data and details included in this brochure are indicative only and may change at any time up to the final 'as built' status in accordance with final designs of the project, regulatory approvals and planning permissions. All accessories and interior finishes such as wallpaper, chandeliers, furniture, electronics, white goods, curtains, hard and soft landscaping, pavements, features, gym, swimming pool(s) and other elements displayed in the brochure, or within the show apartment or between the plot boundary and the unit, are not part of the unit and are shown for illustrative purposes only.

**2-BEDS
TYPE 02**

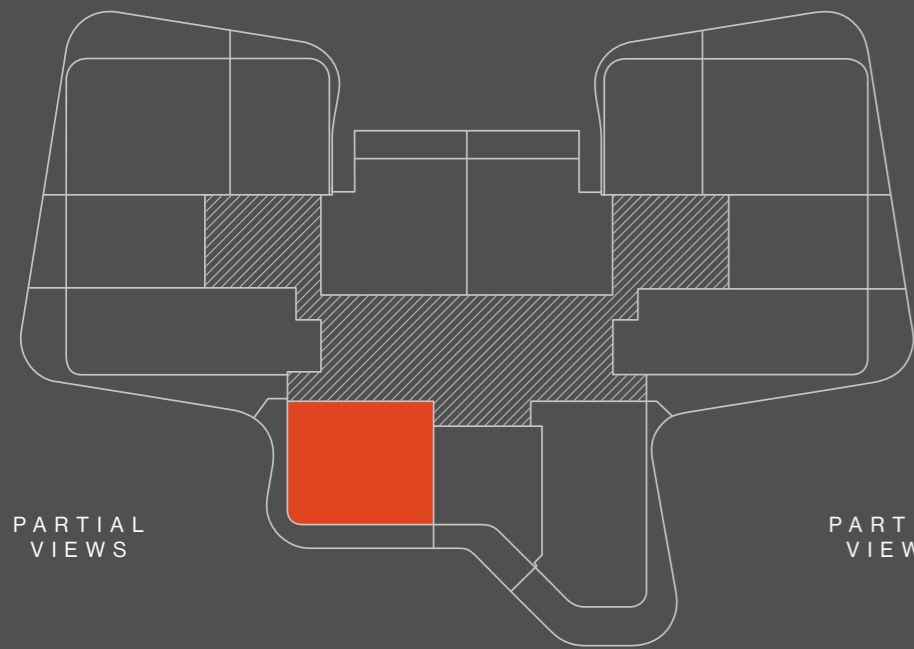
LEVELS
1 - 15



BURJ KHALIFA



DUBAI CANAL



CITY VIEWS

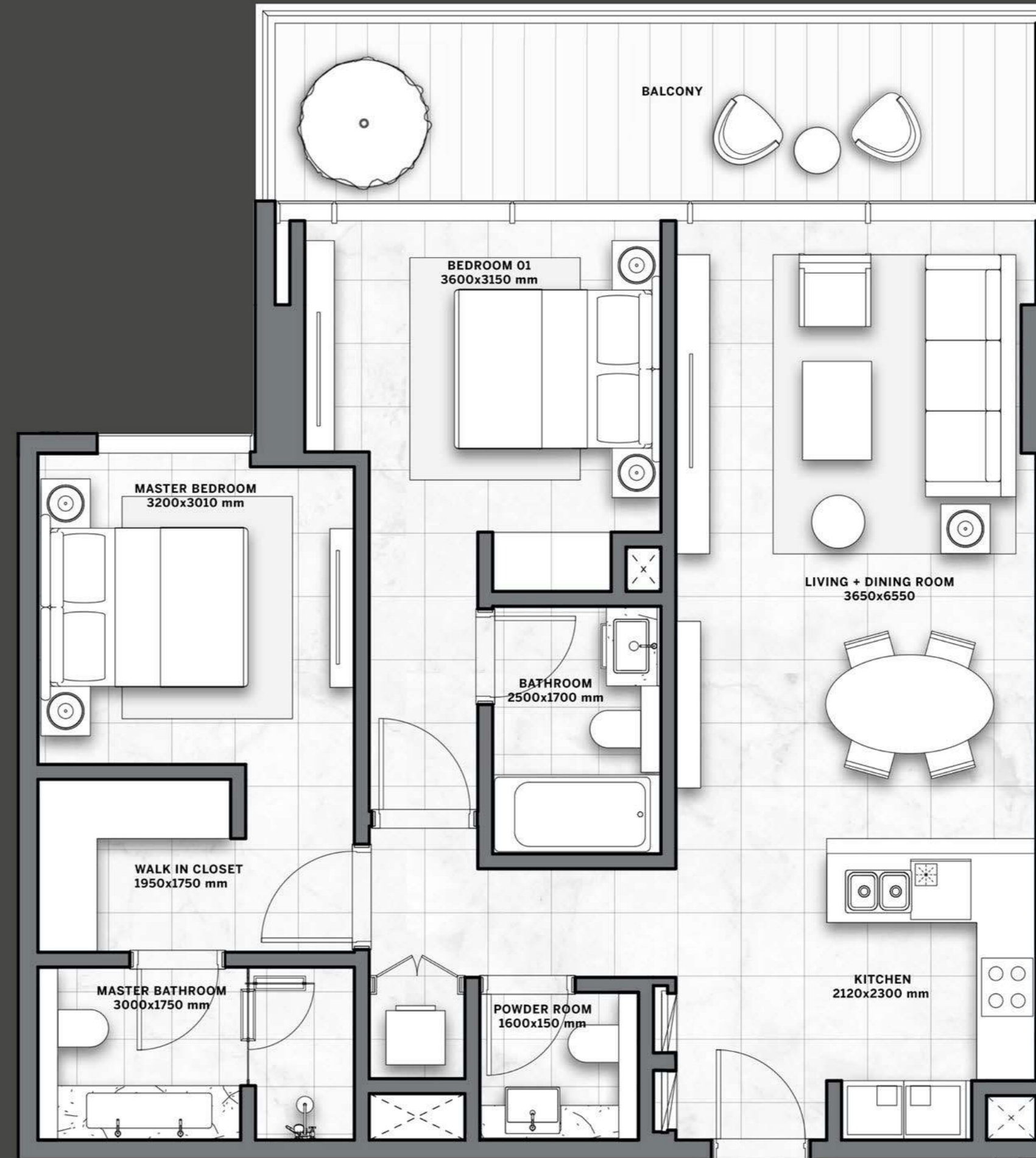
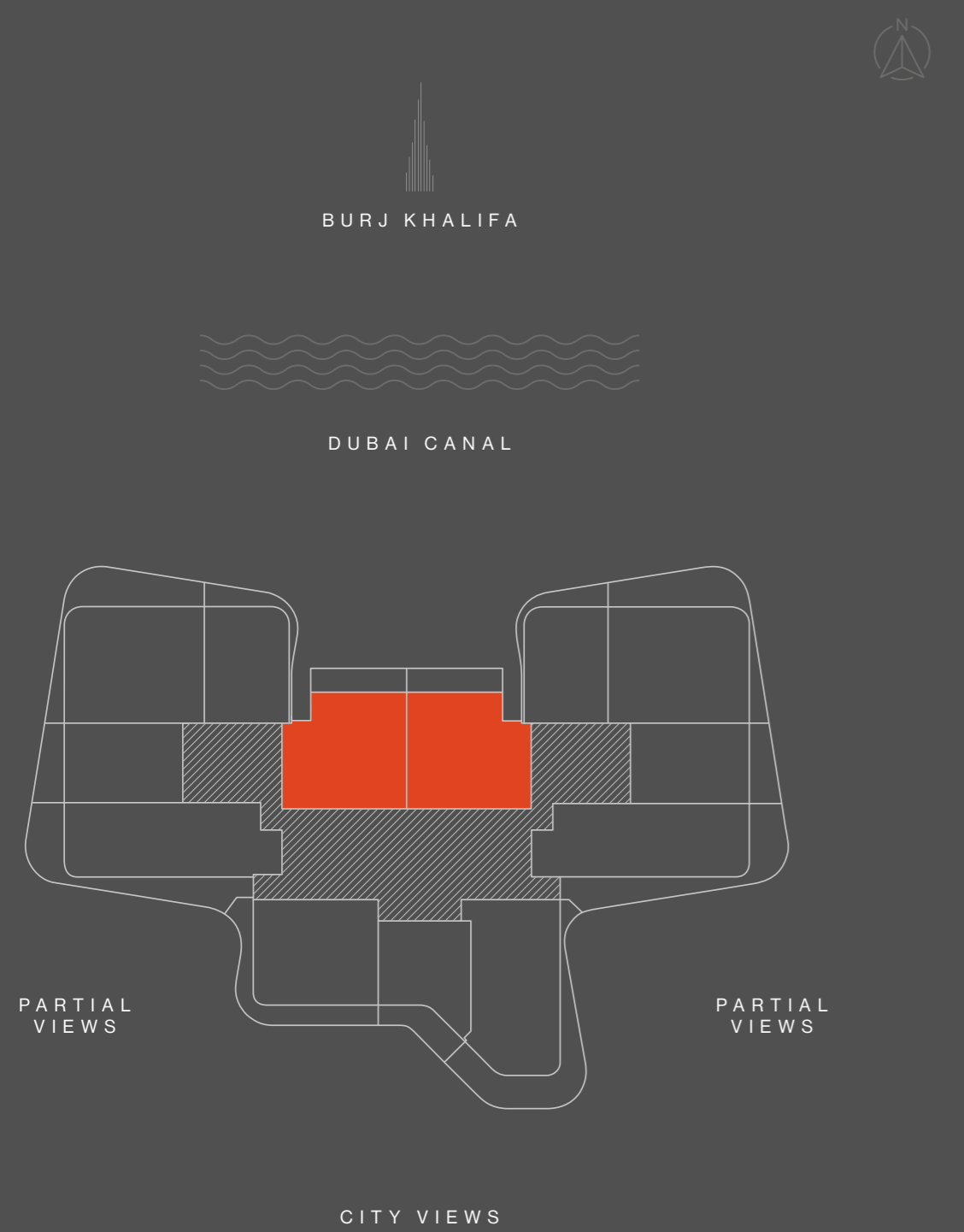


INTERNAL AREA	sqm 91	sqft 980
BALCONY	sqm 26 - 28	sqft 279 - 302
TOTAL	sqm 117 - 119	sqft 1,259 - 1,281

Disclaimer: All pictures, plans, layouts, information, data and details included in this brochure are indicative only and may change at any time up to the final 'as built' status in accordance with final designs of the project, regulatory approvals and planning permissions. All accessories and interior finishes such as wallpaper, chandeliers, furniture, electronics, white goods, curtains, hard and soft landscaping, pavements, features, gym, swimming pool(s) and other elements displayed in the brochure, or within the show apartment or between the plot boundary and the unit, are not part of the unit and are shown for illustrative purposes only.

**2-BEDS
TYPE 03**

LEVELS
1 - 15

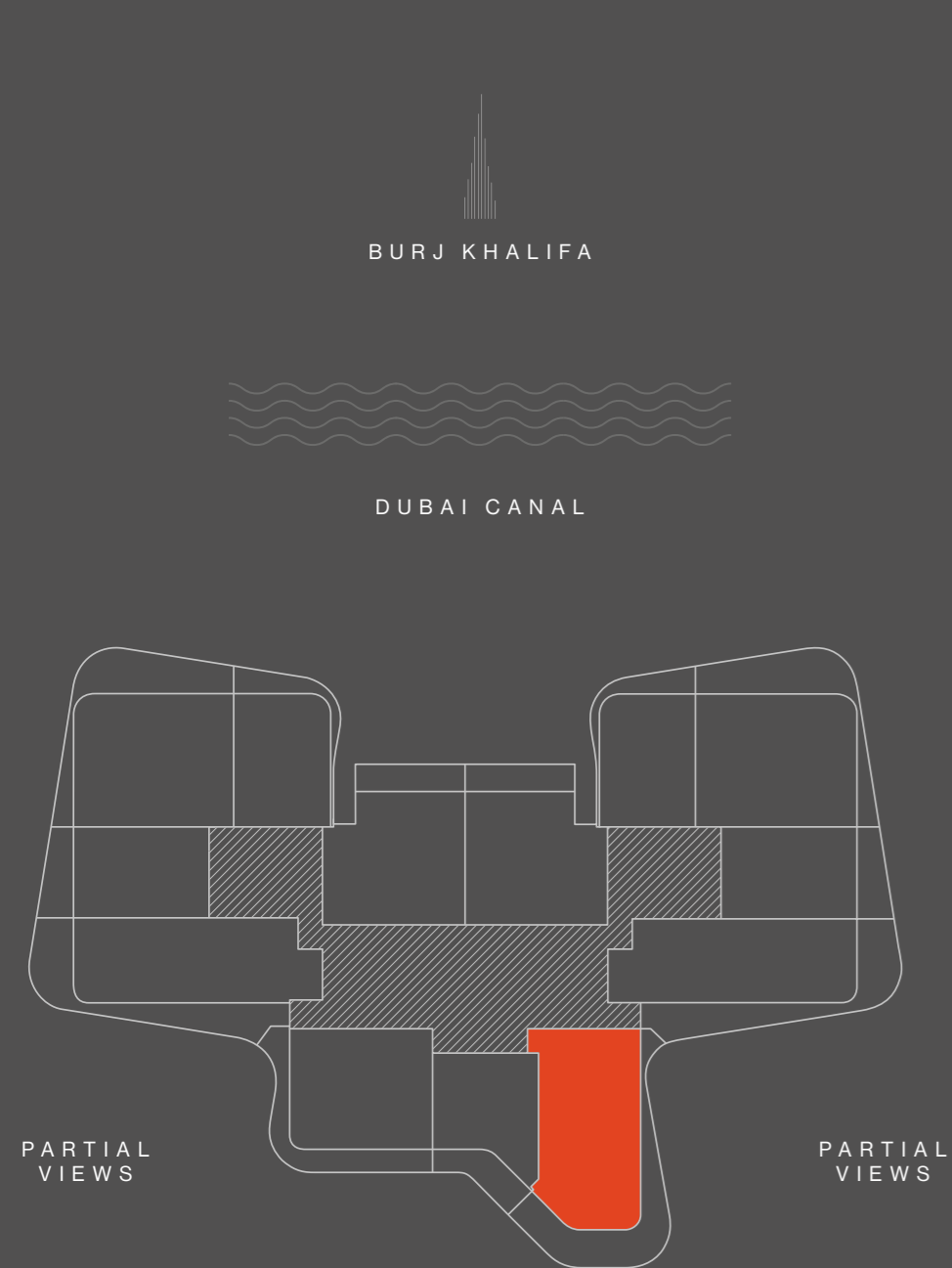


INTERNAL AREA	sqm 92	sqft 990
BALCONY	sqm 14	sqft 151
TOTAL	sqm 106	sqft 1,141

Disclaimer: All pictures, plans, layouts, information, data and details included in this brochure are indicative only and may change at any time up to the final 'as built' status in accordance with final designs of the project, regulatory approvals and planning permissions. All accessories and interior finishes such as wallpaper, chandeliers, furniture, electronics, white goods, curtains, hard and soft landscaping, pavements, features, gym, swimming pool(s) and other elements displayed in the brochure, or within the show apartment or between the plot boundary and the unit, are not part of the unit and are shown for illustrative purposes only.

**2 - BEDS
TYPE 04**

LEVELS
1 - 15

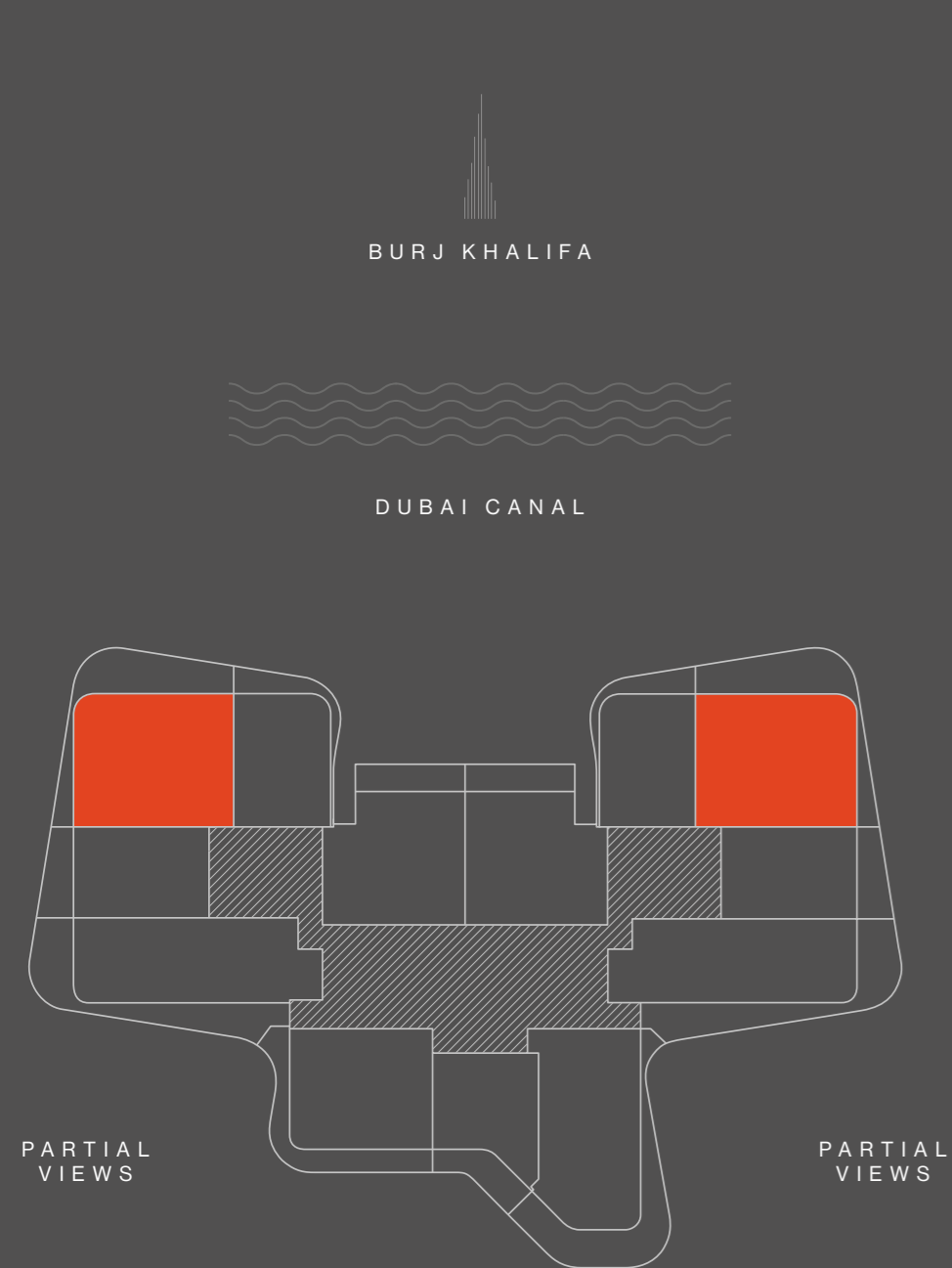


INTERNAL AREA	sqm 107	sqft 1,152
BALCONY	sqm 39 - 46	sqft 420 - 495
TOTAL	sqm 146 - 153	sqft 1,572 - 1,647

Disclaimer: All pictures, plans, layouts, information, data and details included in this brochure are indicative only and may change at any time up to the final 'as built' status in accordance with final designs of the project, regulatory approvals and planning permissions. All accessories and interior finishes such as wallpaper, chandeliers, furniture, electronics, white goods, curtains, hard and soft landscaping, pavements, features, gym, swimming pool(s) and other elements displayed in the brochure, or within the show apartment or between the plot boundary and the unit, are not part of the unit and are shown for illustrative purposes only.

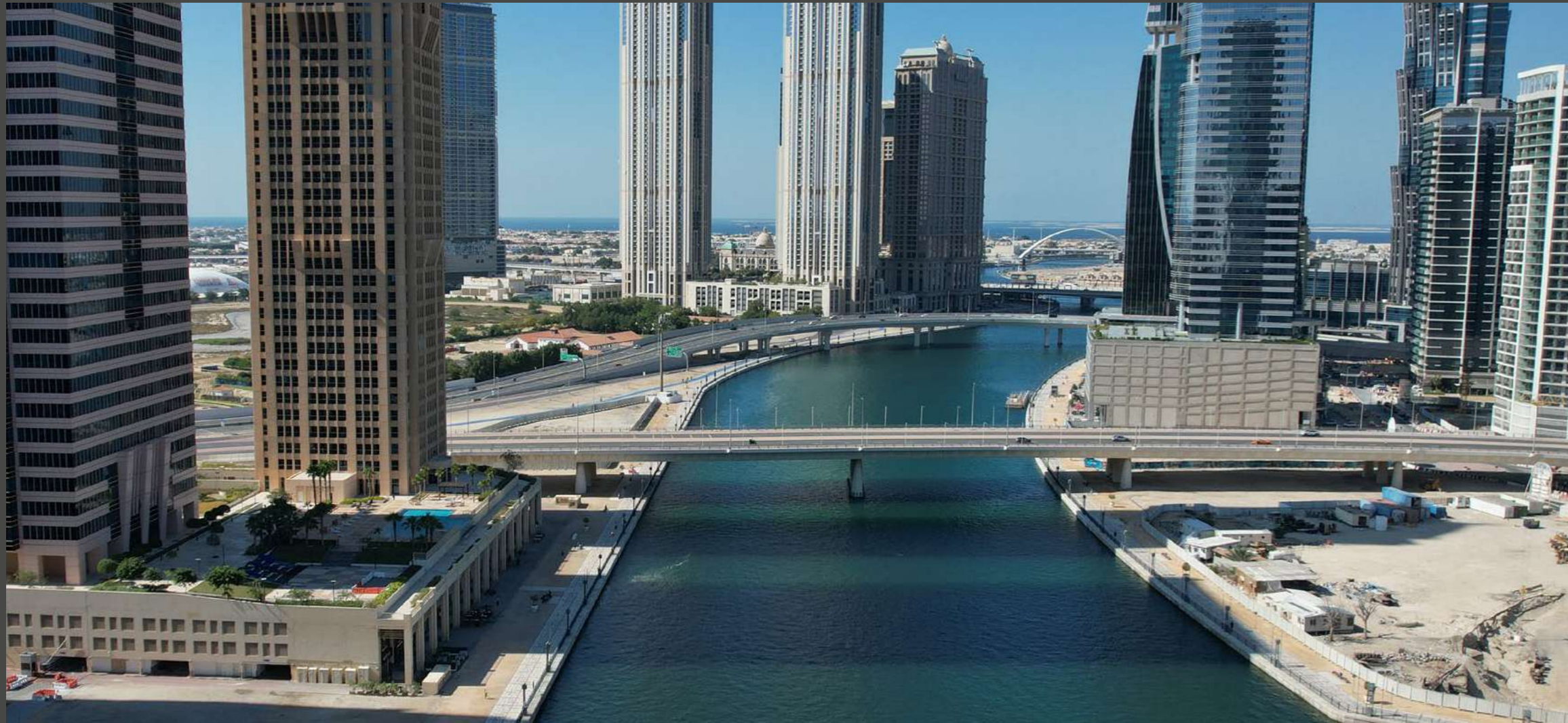
**3-BEDS
TYPE 01**

LEVELS
1 - 19



INTERNAL AREA	sqm 112	sqft 1,206
BALCONY	sqm 35 - 53	sqft 376 - 570
TOTAL	sqm 147 - 165	sqft 1,582 - 1,776

Disclaimer: All pictures, plans, layouts, information, data and details included in this brochure are indicative only and may change at any time up to the final 'as built' status in accordance with final designs of the project, regulatory approvals and planning permissions. All accessories and interior finishes such as wallpaper, chandeliers, furniture, electronics, white goods, curtains, hard and soft landscaping, pavements, features, gym, swimming pool(s) and other elements displayed in the brochure, or within the show apartment or between the plot boundary and the unit, are not part of the unit and are shown for illustrative purposes only.



DCI



REGISTER



YOUR INTEREST

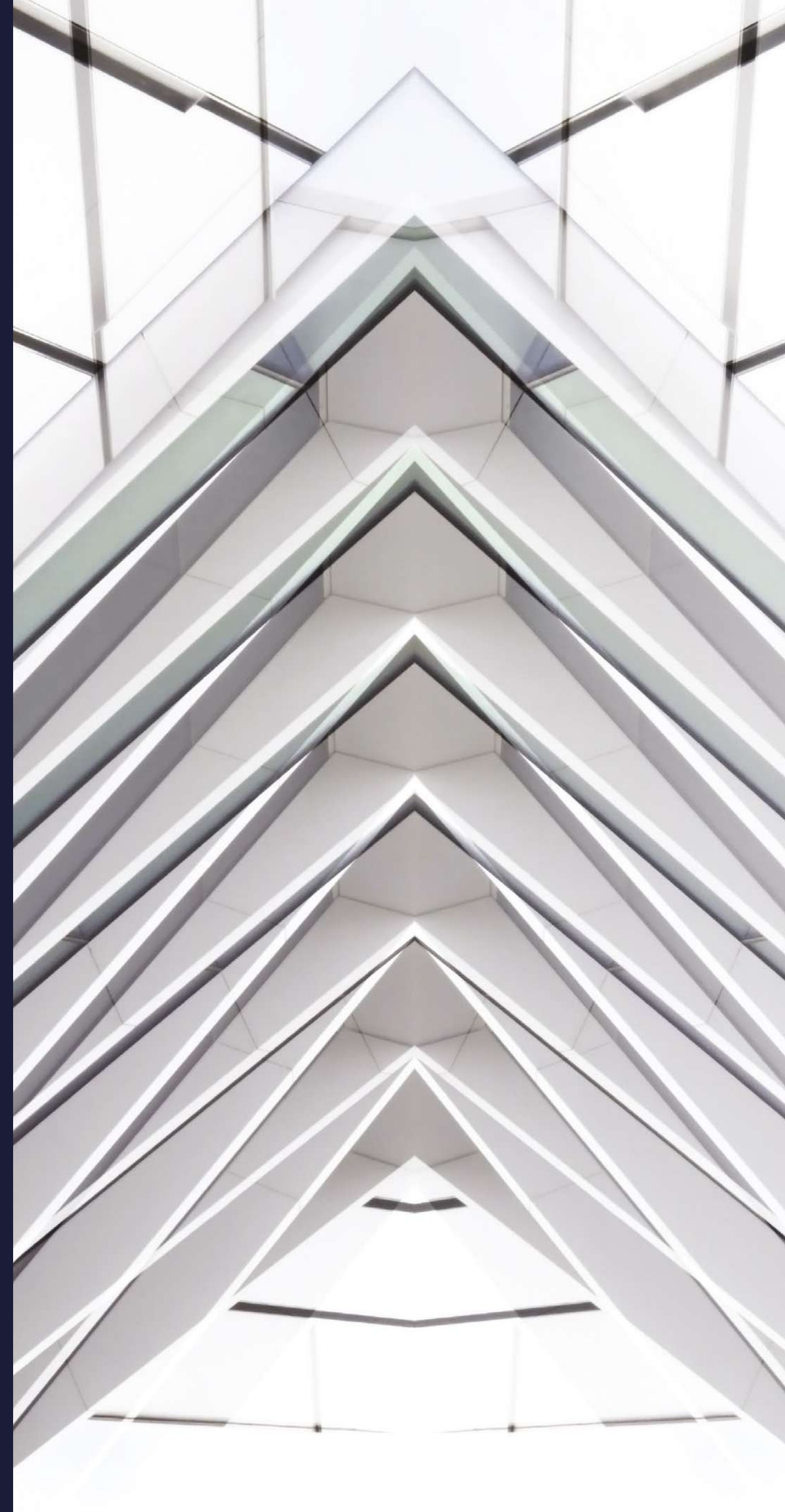
DAR GLOBAL PLC

DARGLOBAL

LISTED ON THE LONDON STOCK EXCHANGE

Established in 2017 to upend the global luxury real estate market, DarGlobal combines experience and innovation to deliver the highest quality properties. World-class architects curate DarGlobal's homes that are modelled by renowned design icons; each DarGlobal home is built with the highest quality materials and maintained by experts within the field.

DarGlobal believes there is no better investment than an investment in luxury and takes pride in choosing the best-in-class locations and properties to provide lucrative investment opportunities for a distinct clientele.



BUILDING ON THE LEGACY
OF THE LARGEST REAL ESTATE
COMPANY IN THE REGION.

—
6
offices in different
cities worldwide

—
28
years of
experience

—
15,000+
residential units
delivered

—
8.2 Bn
USD in assets

—
500,000 sqm
of commercial space



TANAMI
P R O P E R T I E S

CONTACT US

+971 4 248 3400 | +971 55 162 3236

Email Us

info@tanamiproperties.ae

For More Info...

www.tanamiproperties.com/Projects/DG1-Living-Tower



ADDRESS

Office 3405, Marina Plaza,
Al Marsa Street, Dubai Marina, UAE