

الغابة الخضراء  
green  
Swood

Development Plots

NAKHEEL





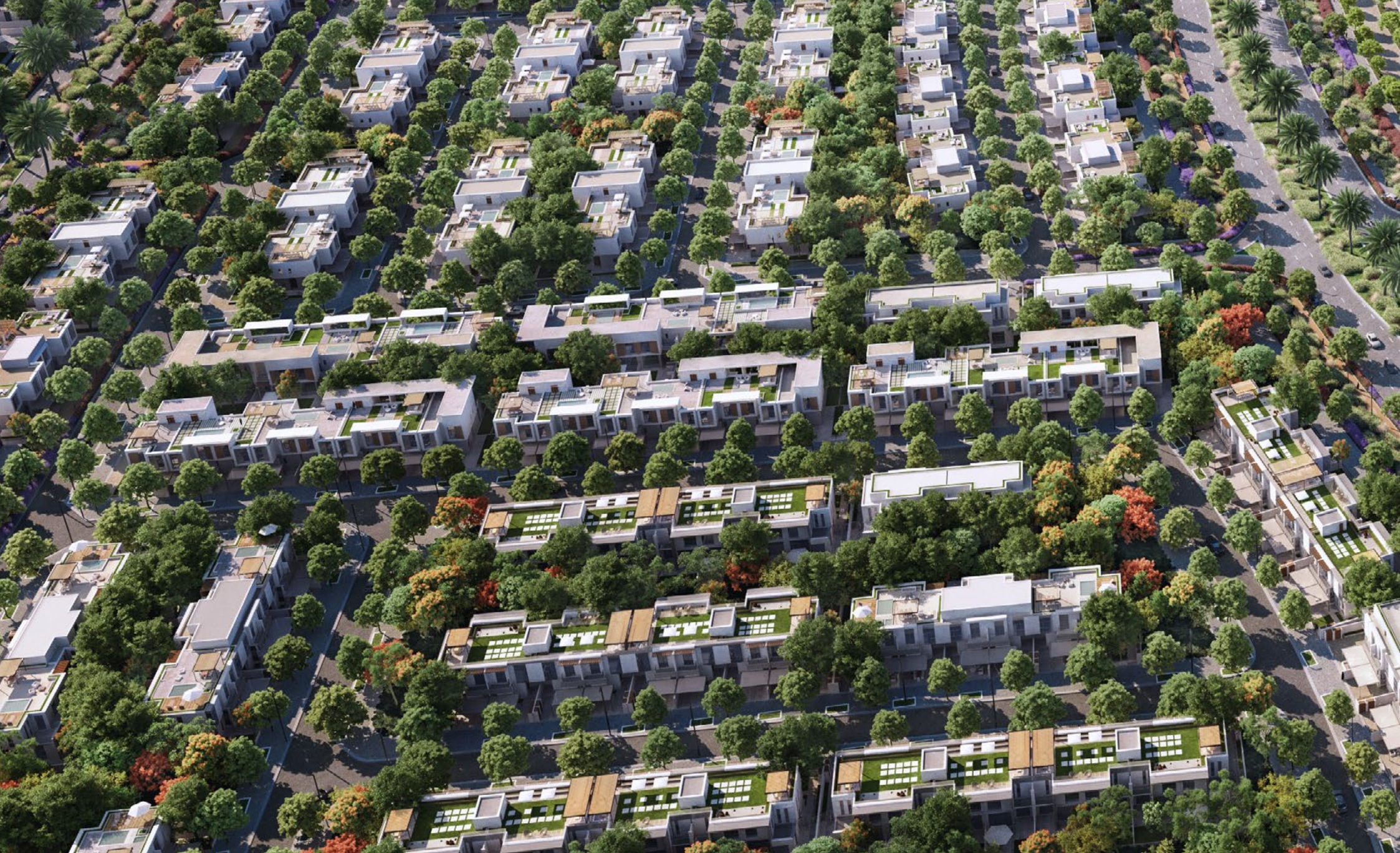
Build your own community in this  
nature inspired neighbourhood.





Presenting a selection of plots to build your community villas and townhouses with a backdrop of the Dubai skyline.





Own plots ranging from **448,390 sqft** to **1,250,753 sqft**,  
within an exclusive gated community.



GreenWood offers the freedom to select a plot and build an architecturally superior, contemporary community of unrivalled sophistication inspired by the rural landscape.







The plot you choose will be on an idyllic, tranquil edge of Dubai. Picture creating stylish abodes in a community resplendent with invigorating pedestrian walkways, leisure amenities and lush open spaces.





Masterplan









The Community





- Town-houses/villas freehold plots
- Ready infrastructure
- Flexible design guidelines
- Located near Sheikh Mohammed Bin Zayed Road
- 20 minutes from Dubai International Airport
- Easy access to Dubai's leading business and leisure destinations





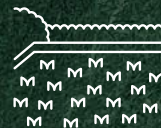
Amenities: the green light for an invigorating lifestyle



An array of convenient amenities tailored around your leisurely lifestyle design to enhance your everyday:



Tranquil pond



Lush lawns



Jogging and cycling tracks



Beautiful central park



Sports facilities and playgrounds



Shop and essential services



Schools and universities nearby



Picnic areas



Pet park



Meditation park



Outdoor fitness



Playground and playscape





Find your plot in this prestigious community catering to all lifestyles and ideal for families, GreenWood is destined to become the benchmark for exclusive community living.





Enjoy sunsets from stimulating open spaces around the ponds and parks. Cycle or jog along energizing tracks or simply relax with family and friends and inhale the surrounding nature.





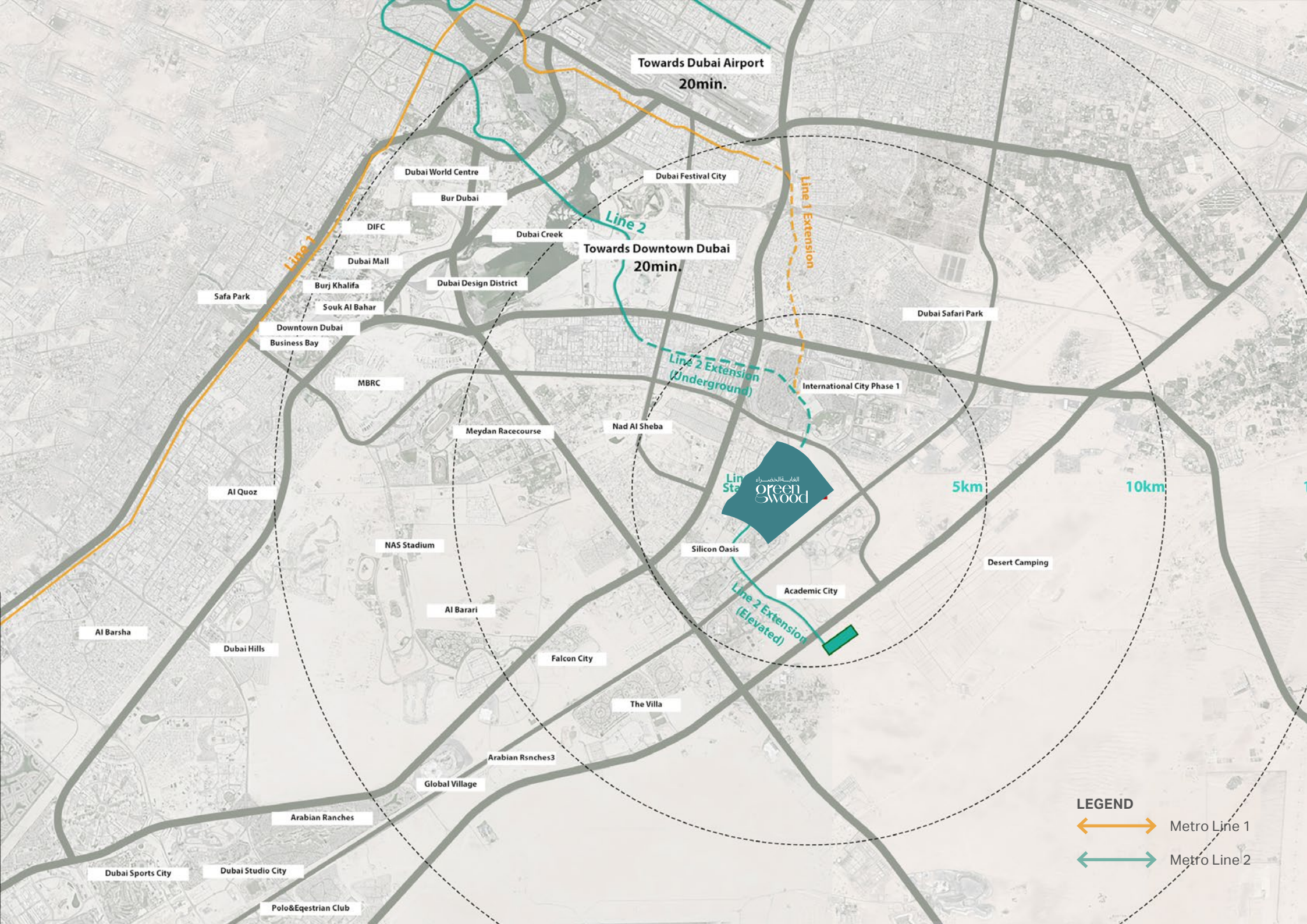
Embark on an exciting journey of outdoor rejuvenation with Greenwood, where wholesome recreational activities await you at every turn.





Close to Dubai, a million miles from bustle







GreenWood is located near International City, around 15 kilometres from Business Bay.

With convenient access via Al Awir Road and Al Ain/Dubai Road, near Sheikh Mohammed Bin Zayed Road, and a metro station destined to complete the picture, GreenWood presents a rare combination of urban amenity and natural beauty:

- Dubai Safari Park – 10 minutes
- Dubai Design District – 15 minutes
- Dubai Mall/Downtown – 20 minutes
- Dubai International Airport – 20 minutes
- Dubai Marina – 25 minutes