

JANNAT | **M**
MIDTOWN
BY DEYAAR

800-DEYAAR (339227)
DEYAAR.COM

الإطلاق الأخير في المشروع **الأرق**
THE *Best* FOR THE LAST.

نقدم **جنات**
مساكن ميدتاون **المميّزة**
من ديار

PRESENTING **JANNAT**
THE MIDTOWN **SIGNATURE RESIDENCES**
BY DEYAAR

الأفق
يبتكر لتغيير نمط الحياة.
THE Best IS CREATED TO CHANGE LIVES.





أرقى
التجارب العصرية
محورها أنت.

THE *Best* OF URBAN LIVING
BUILT AROUND YOU.

غالباً ما تسعى للحصول على الأرقى – سواء كان ذلك من خلال قناعتك
بضرورة الاستمتاع بحياتك على الوجه الأكمل، أو رغبتك في ترك انطباع
رائع على الآخرين، أو ارتباطك بمعايير جودة بصورة لا تقبل الجدل.

نقدم لك جنات، مساكن ميدتاون المميزة، والتقدير المناسب لطموحاتك
التي تبحث عن الرفاهية المترفة والمعايير الحياتية المتفوقة.

مشروع جنات هو خلاصة سلسلة من الأعمال التطويرية في ميدتاون،
ومجمع سكني متكامل من ديار. فعندما تخطو نحو جنات، فإنك ستدخل
مكاناً مليئاً بالإمكانيات الواعدة والخبرات المعيشية الفريدة.

You often strive for the best – be it in your belief of living life
to the fullest, a flair for making a remarkable impression on
others, or an affinity for uncompromising quality.

Presenting Jannat, the Midtown signature residences. A fitting
tribute to your aspirations for a life of higher standards.

Jannat is the grand finale in a series of developments in
Midtown, a fully-integrated township by Deyaar. When you
step into Jannat, you'll enter a place that's thriving with
unique possibilities and living experiences.

أرقى المعطيات لأسلوب حياة متفوق.

THE Best INGREDIENTS FOR A SUPERIOR LIFESTYLE.

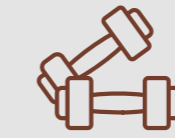
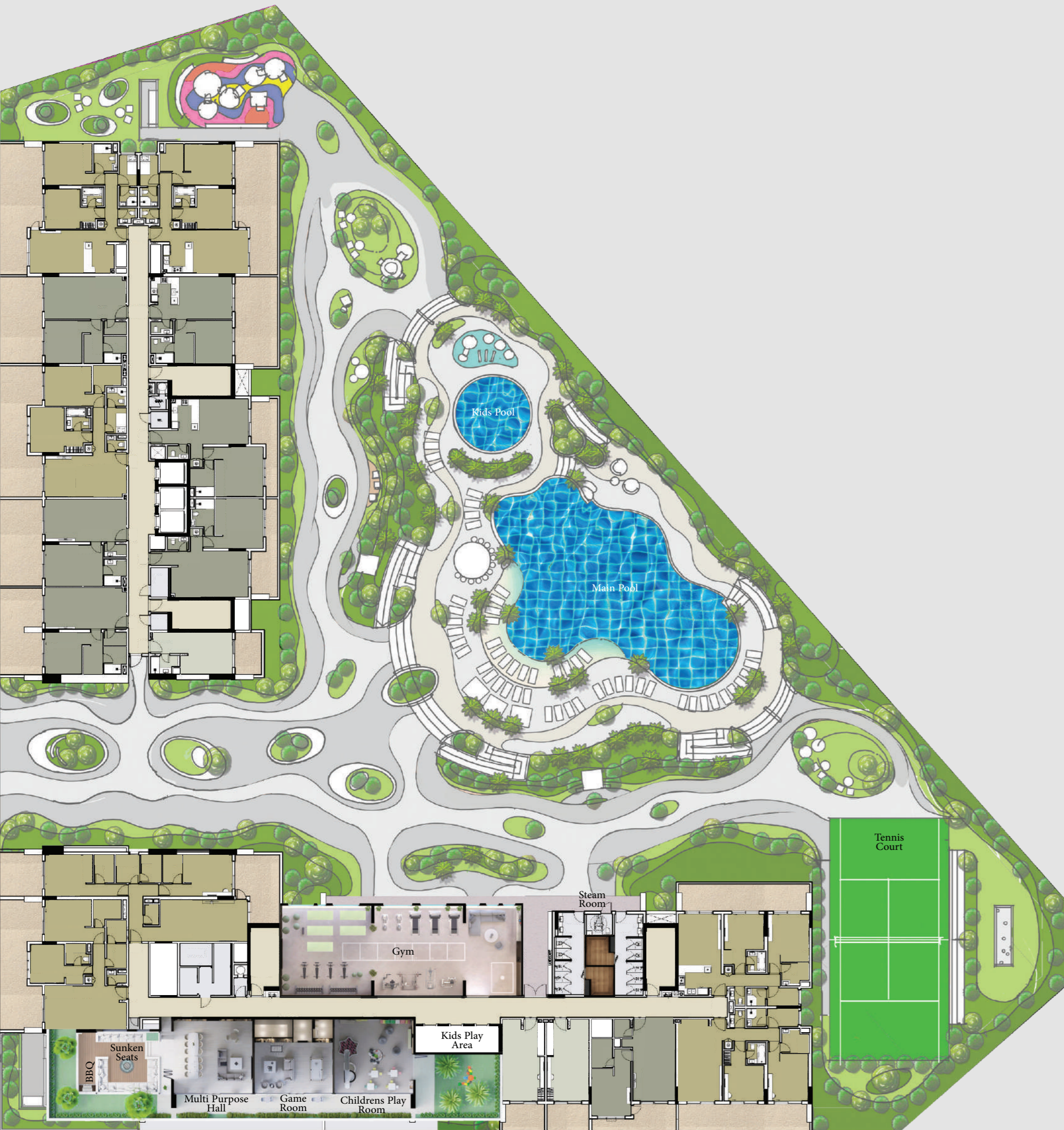
توفر مساكن جنات المميزة نمط حياة استثنائي لأولئك الذين يبحثون باستمرار عن المستوى التالي. اخطو نحو عالم تمتزج فيه معايير الطراز الحديث مع الجودة واللمسات الإبداعية من الدرجة الأولى، حيث الطبيعة الخضراء المورقة، وأشعة الشمس الدافئة، ومجموعة من المساحات الترفيهية التي تملك بالحماس المتجدد لتحقيق أحلامك وتطلعاتك. وحيث ترتقي بحياتك إلى المستوى التالي لتتعمق بأحدث مرافق الترفيه ووسائل الراحة التي تفوق التوقعات.

Jannat signature residences bring forth a lifestyle for those who are constantly seeking the next. Step into a space where modern style blends with top-notch quality and finishes. Where lush green nature, the warmth of clear sunlight, and a host of recreation spaces fill your being with renewed zeal to pursue your dreams. Where your life is raised to the next level by state-of-the-art amenities that are beyond expectations.





أحدث
المرافق
AMENITIES



صالة رياضية
مجهزة بالكامل
Fully Equipped
Gym



غرفة ألعاب
Game Room



غرفة متعددة الأغراض
Multit-purpose
Hall



منطقة للشواء
BBQ



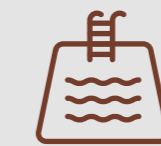
نادي الأطفال
Kids Club



منطقة لعب الأطفال
في الهواء الطلق
Kids Outdoor Play Area



تراس مسبح إنفينيتي
Terrace Infinity Pool



حمام سباحة
Swimming Pool



حمام سباحة للأطفال
Kids Swimming
Pool



ملعب تنس
Tennis Court



منطقة جلوس
في الهواء الطلق
Outdoor Seating Area



سبلاش باد
Splash Pad



بوديوم بإطلالة بانورامية رائعة
Landscaped Podium

أفقى
عنوان لتبقى
على تواصل مع العالم.

THE *Best* ADDRESS FOR
A CONNECTED WORLD.

مشروع جنات هو جزء من ميدتاون، يقع في قلب مدينة دبي للإنتاج، ويتميز بقربه من أفضل المؤسسات التعليمية والتجارية ومرافق التجزئة والترفيه ووسائل الراحة والاسترخاء، مما يجعل منه الوجهة المفضلة للجميع، لاسيما أولئك الباحثين عن الحياة المدنية الحديثة ذات المعايير العالمية. علاوة على ذلك، سيتمكن سكان ميدتاون من الاستمتاع بإطلالة رائعة على مشهد عام لمدينة دبي وملاعب جميرا للغولف.

Jannat is part of Midtown, located at the heart of Dubai Production City (D.P.C.). Midtown's location advantage is its proximity to top education, retail, entertainment, and leisure establishments and facilities, making Jannat a preferred destination for all. Especially those with a cosmopolitan frame of mind. What's more, the residents of Jannat will also enjoy spectacular views of the Dubai skyline and the Jumeirah Golf Estates.





أرق
الخيارات على بُعد
خطوات قليلة.
THE Best CHOICES ARE
JUST AROUND CORNER.

التجزئة RETAIL



سيتي سنتر
معيصم

٦ دقائق

Maesem
City Center
6 min

مول الإمارات

١٦ دقيقة

Mall of Emirates
16 min

دبي مول

١٩ دقيقة

Dubai Mall
19 min

إكسيو ٢٠٢٠

٢٠ دقيقة

Expo
20 min

المطارات AIRPORT



مطار دبي وورلد سنترال

٢٤ دقيقة

DWC Airport
24 min

مطار دبي الدولي

٢٨ دقيقة

Dubai Intl Airport
28 min

في المحيط المجاور

IN CLOSE VICINITY



مدينة دبي الرياضية

٨ دقائق

Dubai Sports City
8 min

ممشى جي بي آر

١٥ دقيقة

JBR Walk
15 min

تلال الإمارات

١٤ دقيقة

Emirates Hills
14 min

المرايغ العربية

١٢ دقيقة

Arabian Ranches
12 min

نخلة جميرا

٢٠ دقيقة

Palm Jumeirah
20 min



Palm Jabel Ali

Palm Jumeirah

Jumeirah

Umm Suqeim

Al Manara

Umm Al Sheif

JANNAT

Al Quoz Industrial Area

Al Barsha

Jabel Industrial Area

Al Barsha South

Jumeirah Village Circle

Jumeirah Village triangle

Maesem City Center

Jumeriah Golf Estates

MIDTOWN
Dubai Production City

Dubai Invesrment Park

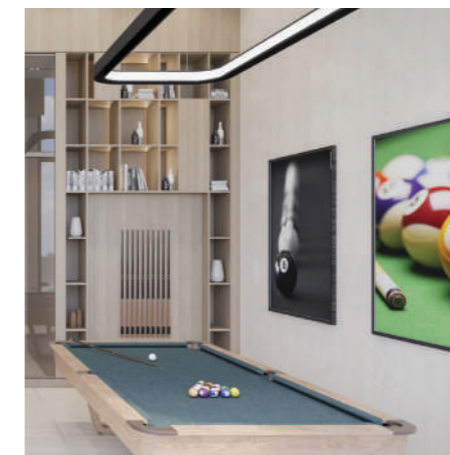


أرقى
التجارب الحياتية
المعاصرة.

THE *Best* OF CONTEMPORARY
EXPERIENCES.

هناك العديد من العوامل التي تجعل الحياة في جنات فريدة من نوعها، لعل أحد أبرزها القدرة على الاستمتاع بأرقى تجارب الترفيه والتسلية كل يوم.

There are many factors that make life at Jannat unique. Being able to enjoy the finest leisure and entertainment experiences every day is just one of them.





أرق
الانطباعات التي تبقى
في الذاكرة.
THE *Best* OF UNFORGETTABLE
IMPRESSIONS.





أرقى نمط عمراني مميز. THE Best IN ICONIC STYLE.

اجعل العمارة المميزة والأيقونية سمة تميز منزلك. دع حياتك المثالية تكشف عن نفسها واستمتع بتصميم ينبض بالروعة ويجمع بين الفخامة المترفة والأداء والفعالية المتميزة.

Make the distinct and iconic architecture the identity of your home. Let your ideal life unfold in the midst of magnificent styling that brings you unrivaled blend of luxury and functionality.

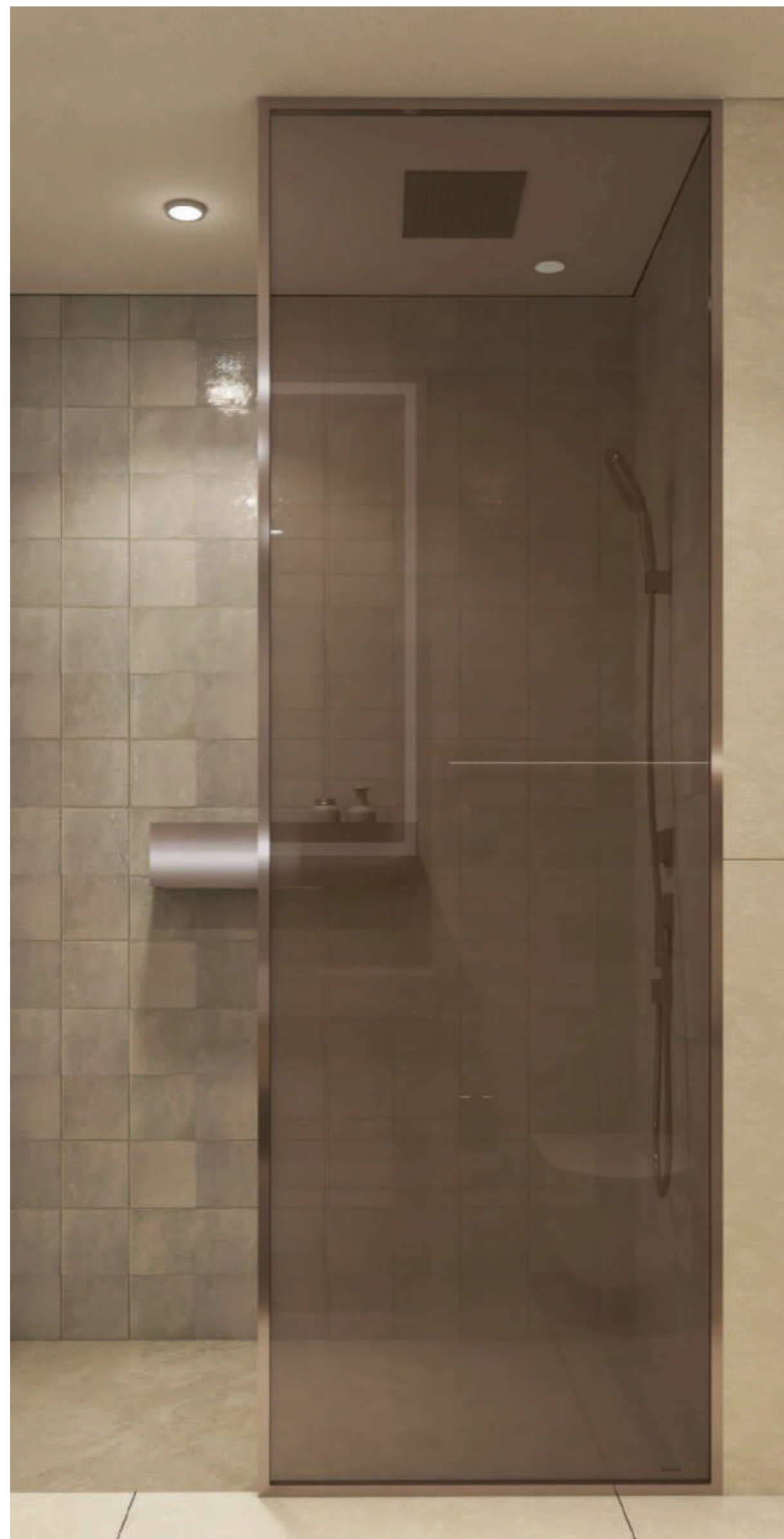


أنماط العيش الحديثة.

ألف

THE Best IN MODERN LIVING.









أرق بيئة لحياة مفعمة بالحياة.

THE *Best* ENVIRONMENT
FOR A LIFE OF VITALITY.

تمنحك الحياة في ميدتاون متعة العيش في مجمع سكني ينبض بالحياة. وبصفتك أحد سكان جنات سيكون لديك الكثير لتقوم به، من اللعب مع أطفالك والمشي بين المساحات الخضراء إلى قضاء أمتع الأوقات مع العائلة.

الملتقى الأخضر

تحلو الحياة في جنات لأنك ستكون محاطاً بالطبيعة من كل جانب، حيث تم تخصيص منطقة خضراء واسعة بطول كيلومتر على البواديوم لتربط جميع أبنية مشروع ميدتاون مثل مسك، ونور، وأفنان، وجنات، ولتُضفي على المشروع جواً عائلياً لا مثيل له. وتتميز هذه المنطقة الخضراء بوجود العديد من الحدائق والأشجار الوارفة الظلال والمروج لأجمل اللقاءات العائلية.

The Midtown life is a vibrant and thriving community you call home. As a resident of Jannat, you'll not have a space that's both personal and secure, you'll also have a whole lot to discover.

Green Concourse

Built on a podium linking all the residential buildings of earlier Mesk, Noor, Dania, Afnan, and the newly launched Jannat together, a landscaped piazza stretches a kilometer in length. This refreshing green space features community parks, open lawns for family and community gatherings.





أرفق
المرافق لتلبية
جميع احتياجاتك.

THE *Best* TO TAKE CARE
OF ALL YOUR NEEDS.

يضم "الشارع التجاري" في منطقة ميدتاون متاجر صغيرة ومرافق لغسل الملابس وصيدليات ومحلات سوبر ماركت ومطاعم متنوعة ومقاهي، بالإضافة إلى متجر لرعاية الحيوانات الأليفة متكامل الخدمات.

The Retail Boulevard at Midtown includes convenience stores, laundry facilities, pharmacies, supermarkets, multi-cuisine restaurants and cafes, and a full-service pet care shop







المواصفات
SPECIFICATIONS

STUDIOS	380-470 feet ²	شقق الاستديو
Finished open kitchen design equipped with cooker top, oven, sink, hood, fridge and washing machine.		تصميم مطبخ مفتوح، مجهز بموقد علوي وفرن، حوض غسل الأواني وشفاط وثلاجة، مغسلة، وغسالة ملابس.
Open floorplan concept with direct access to private balcony or terrace.		مخطط مفتوح ملحق مباشرة بالشرقة الخاصة أو التراس.
Three-fixture bathroom having a washbasin, toilet and shower.		حمام ثلاثي التجهيزات، مغسلة ومرحاض ودش.
Built in wardrobes.		خزائن حائط مدمجة.
Provision for TV living area.		منطقة مخصصة للتلفزيون.

1 BEDROOM APARTMENTS	705-1020 feet ²	شقق بغرفة نوم واحدة
Finished open kitchen design equipped with cooker top, oven, sink, hood, fridge, dishwasher and washing machine.		مطبخ بتصميم مفتوح ومجهز بموقد علوي، فرن، حوض غسل الأواني، شفاط، ثلاجة، مغسلة، غسالة أطباق وغسالة ملابس.
Open floorplan living and dining area with direct access to private balcony or terrace.		مخطط مفتوح للمعيشة وتناول الطعام ملحق مباشرة بالشرقة الخاصة أو التراس.
Powder room with washbasin and toilet.		حمام خارجي مزود بمغسلة ومرحاض.
Bedroom with en-suite three-fixture bathroom.		غرفة نوم بحمام داخلي ثلاثي التجهيزات.
Built in wardrobes.		وخزائن مدمجة.

2 BEDROOM APARTMENTS	1130-1685 feet ²	شقق بغرفتي نوم
Finished open kitchen design equipped with cooker top, oven, hood, sink, fridge and dishwasher.		مطبخ بتصميم مفتوح، مجهز بموقد علوي وفرن وشفاط وحوض غسل الأواني وثلاجة وغسالة أطباق.
Open floorplan living and dining area with direct access to private balcony or terrace.		مخطط مفتوح للمعيشة وتناول الطعام ملحق مباشرة بالشرقة الخاصة أو التراس
Dedicated Laundry room equipped with washing machine.		غرفة غسيل مجهزة بغسالة ملابس.
Master bedroom with built in wardrobes and en-suite three fixture bathroom.		غرفة نوم رئيسية مع خزائن مدمجة وحمام داخلي ثلاثي التجهيزات.
Master bedroom is complemented with direct access to private balcony/terrace.		غرفة النوم الرئيسية ملحققة مباشرة بالشرقة الخاصة أو التراس.
Secondary bedroom with built in wardrobes and en-suite three-fixture bathroom.		غرفة نوم ثانوية مع خزائن مدمجة وحمام داخلي ثلاثي التجهيزات.
Powder room with washbasin and toilet.		حمام خارجي مزود بمغسلة ومرحاض.
Maid room with en-suite three-fixture bathroom.		غرفة خادمة مع حمام داخلي بثلاث تجهيزات.

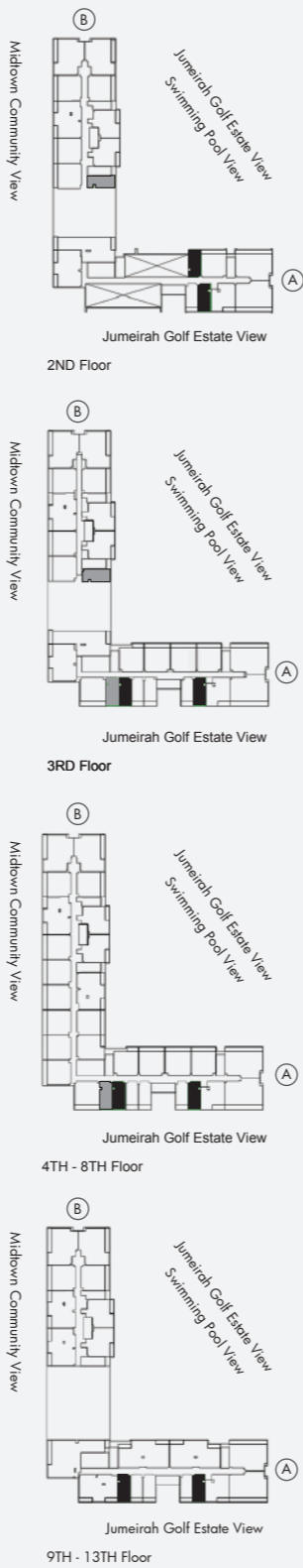
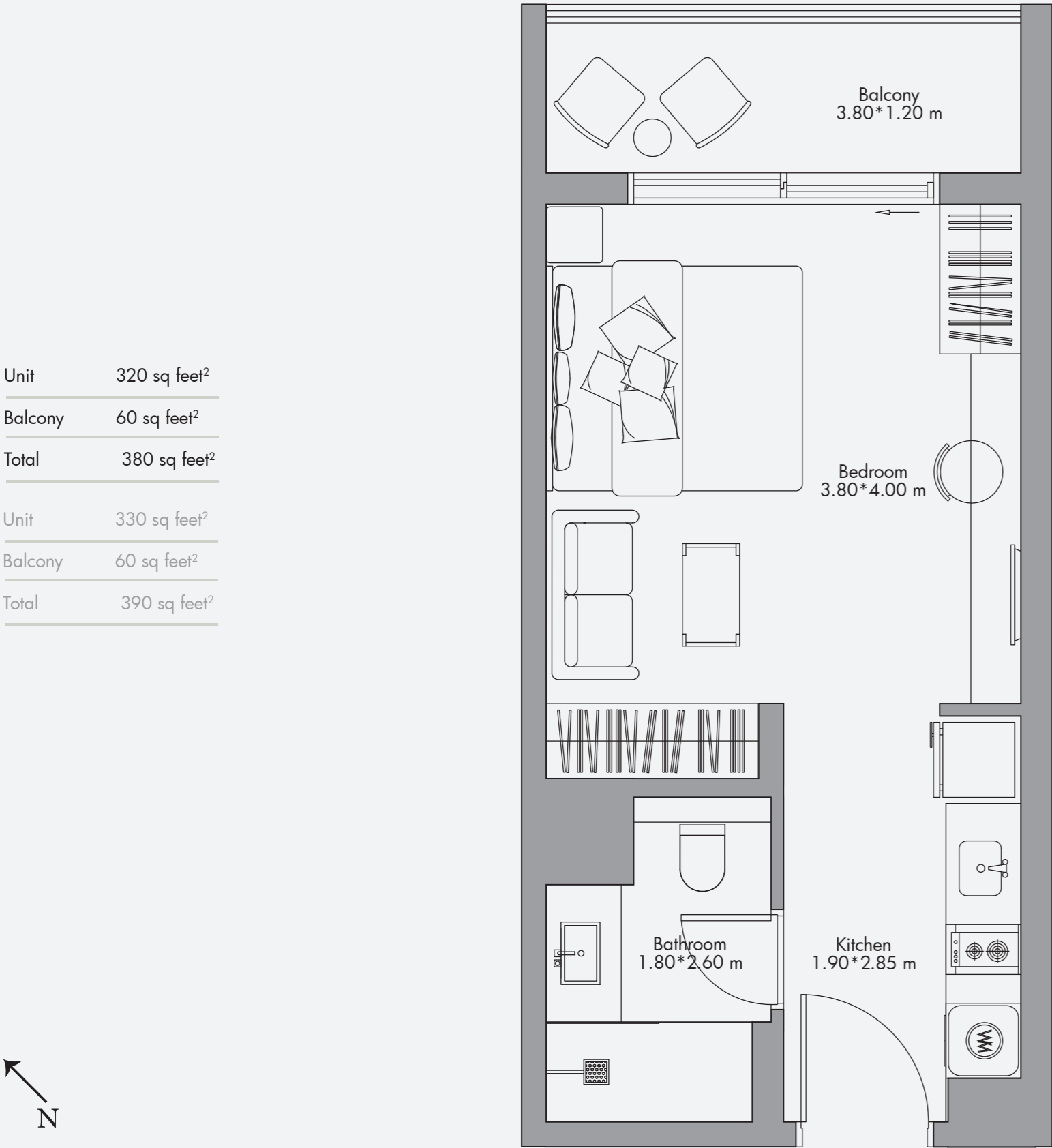
3 BEDROOM APARTMENTS	1515-1760 feet ²	شقق بثلاث غرف نوم
Finished open kitchen design equipped with cooker top, oven, hood, sink, fridge dishwasher and washing machine.		مطبخ بتصميم مفتوح، مجهز بموقد علوي وفرن وغطاء وحوض غسل الأواني وثلاجة وغسالة أطباق وغسالة ملابس.
Open floorplan living and dining area with direct access to private balcony.		مخطط مفتوح للمعيشة وتناول الطعام يتيح الوصول المباشر إلى الشرقة الخاصة.
Master bedroom with built in walk-in closet.		غرفة نوم رئيسية مع خزانة ملابس كبيرة.
Master bedroom is complemented with en-suite three fixture bathroom and direct access to private balcony.		غرفة النوم الرئيسية مزودة بحمام داخلي بثلاثة تجهيزات، ملحققة مباشرة بالشرقة الخاصة.
Secondary bedroom with built-in wardrobes and en-suite three-fixture bathroom.		غرفة نوم ثانوية مع خزائن مدمجة وحمام داخلي بثلاث تجهيزات.
Guest bedroom with built-in wardrobes and en-suite three-fixture bathroom.		غرفة نوم للضيوف مع خزائن مدمجة وحمام داخلي ثلاثي التجهيزات.
Powder room with washbasin and toilet.		حمام خارجي مزود بمغسلة ومرحاض.
Maid room with en-suite three-fixture bathroom.		غرفة خادمة مع حمام داخلي ثلاثي التجهيزات.



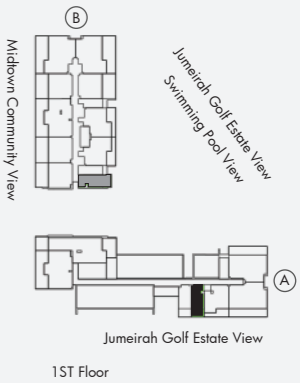
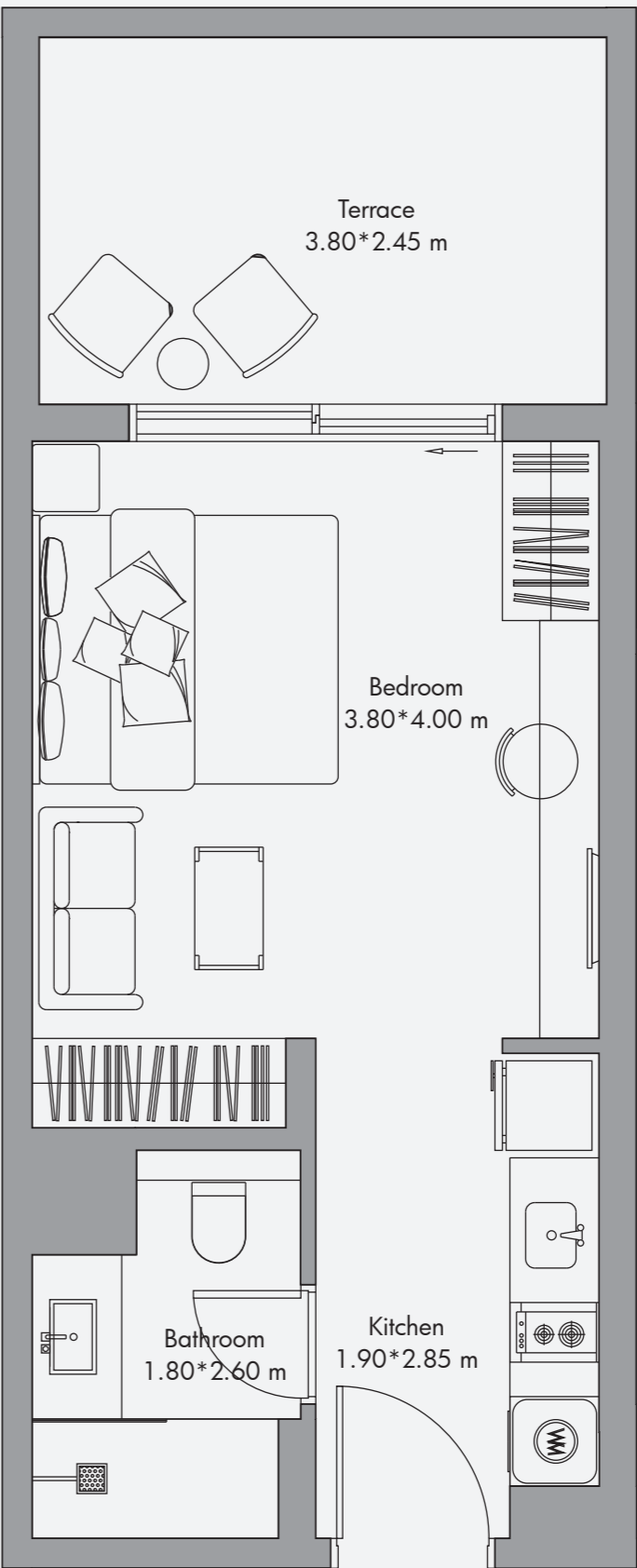
المخططات
THE FLOORPLANS



Studio Apartment Type 01 / 380 sq feet² - Type 01a / 390 sq feet²



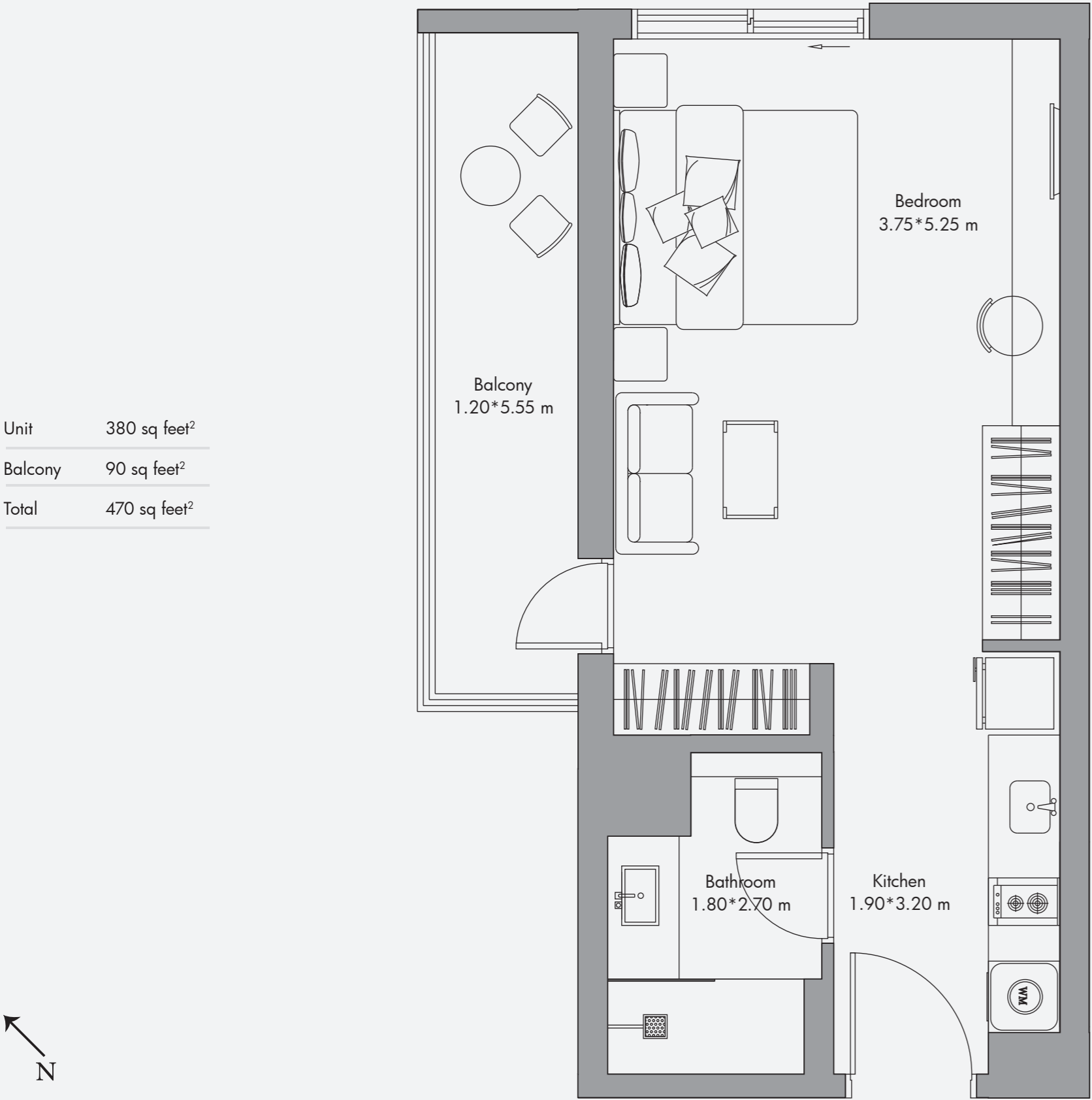
Studio Apartment Type 01-T / 435 sq feet² - Type 01-T1 / 445 sq feet²



Disclaimer:
All the dimensions are in meters. The Unit shown is typical, and actual Unit may vary in dimensions, areas, layout, material specification, orientation, and location. Some of the Units may have a mirrored layout of the above plan. Unit Windows, Façade, Balcony door location, Fixtures, Kitchen Cabinets, Sanitary ware, and Wardrobes, including each of their location as shown in the plan is indicative and subject to revision by the Seller. All fixtures, fittings, goods, accessories, and furniture reflected/displayed in this plan(s) are strictly illustrative and representational (not actual) in nature and are only for the purpose of illustrating / reflecting one of the possible layouts which the Purchaser could arrange after the Unit is handed over and do not form part of the Unit. No furniture, goods, accessories are included in the sale, unless such items are specifically included in Schedule A of the SPA.

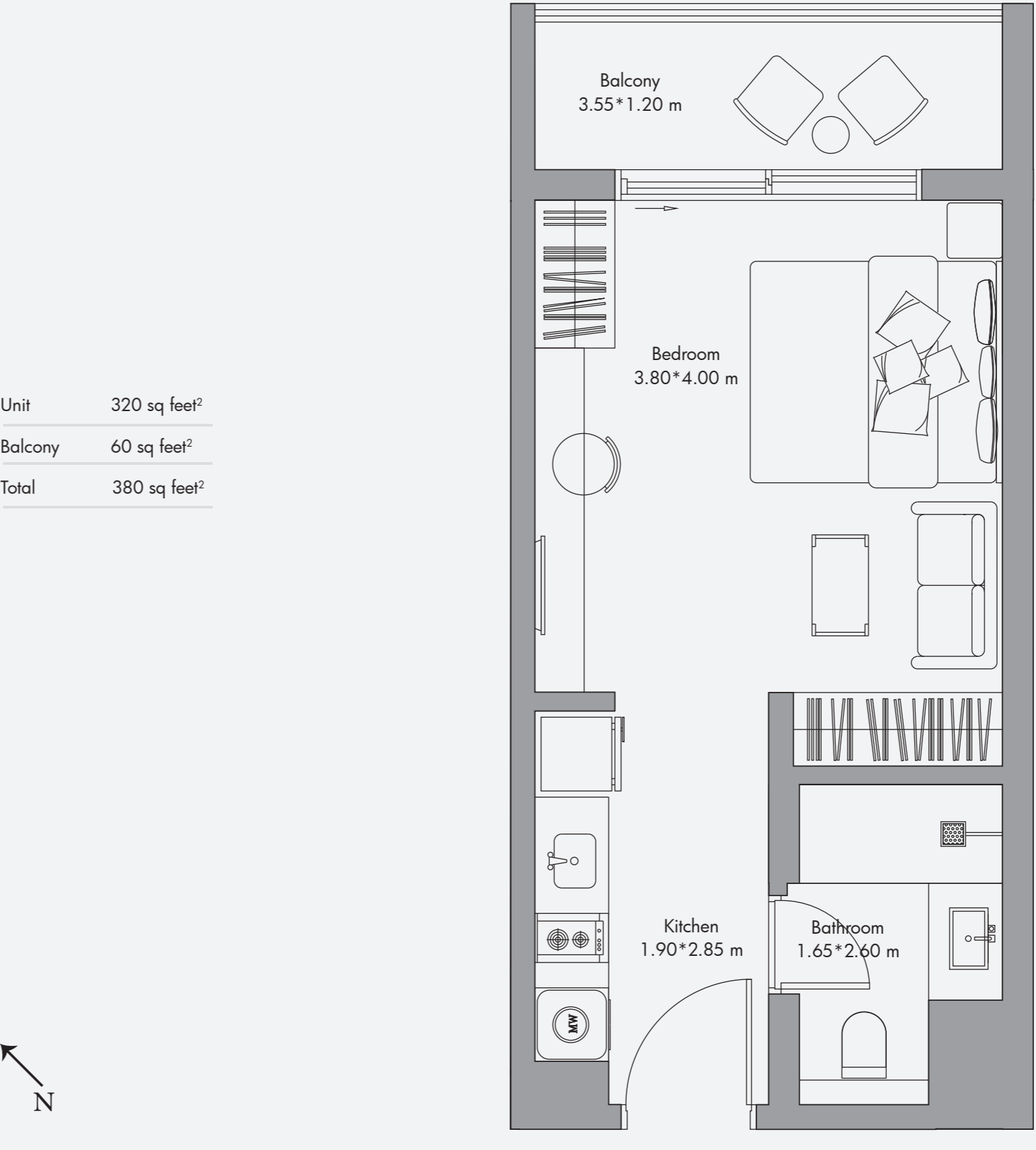
Disclaimer:
All the dimensions are in meters. The Unit shown is typical, and actual Unit may vary in dimensions, areas, layout, material specification, orientation, and location. Some of the Units may have a mirrored layout of the above plan. Unit Windows, Façade, Balcony door location, Fixtures, Kitchen Cabinets, Sanitary ware, and Wardrobes, including each of their location as shown in the plan is indicative and subject to revision by the Seller. All fixtures, fittings, goods, accessories, and furniture reflected/displayed in this plan(s) are strictly illustrative and representational (not actual) in nature and are only for the purpose of illustrating / reflecting one of the possible layouts which the Purchaser could arrange after the Unit is handed over and do not form part of the Unit. No furniture, goods, accessories are included in the sale, unless such items are specifically included in Schedule A of the SPA.

Studio Apartment Type 02 / 470 sq feet²



Disclaimer:
All the dimensions are in meters. The Unit shown is typical, and actual Unit may vary in dimensions, areas, layout, material specification, orientation, and location. Some of the Units may have a mirrored layout of the above plan. Unit Windows, Façade, Balcony door location, Fixtures, Kitchen Cabinets, Sanitary ware, and Wardrobes, including each of their location as shown in the plan is indicative and subject to revision by the Seller. All fixtures, fittings, goods, accessories, and furniture reflected/displayed in this plan(s) are strictly illustrative and representational (not actual) in nature and are only for the purpose of illustrating / reflecting one of the possible layouts which the Purchaser could arrange after the Unit is handed over and do not form part of the Unit. No furniture, goods, accessories are included in the sale, unless such items are specifically included in Schedule A of the SPA.

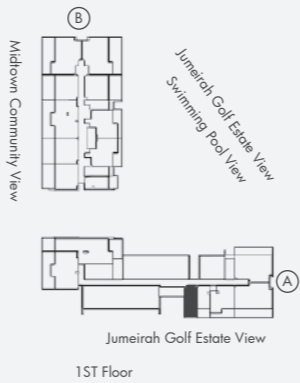
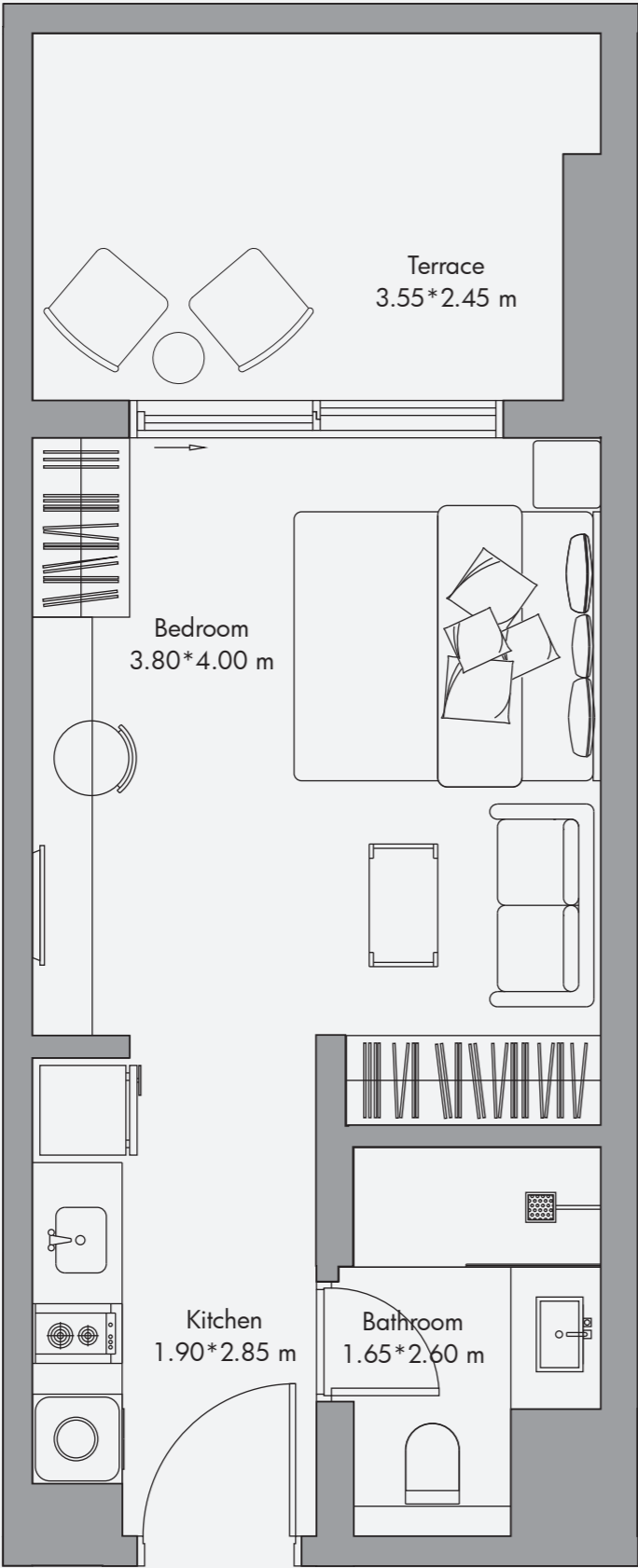
Studio Apartment Type 03 / 380 sq feet²



Disclaimer:
All the dimensions are in meters. The Unit shown is typical, and actual Unit may vary in dimensions, areas, layout, material specification, orientation, and location. Some of the Units may have a mirrored layout of the above plan. Unit Windows, Façade, Balcony door location, Fixtures, Kitchen Cabinets, Sanitary ware, and Wardrobes, including each of their location as shown in the plan is indicative and subject to revision by the Seller. All fixtures, fittings, goods, accessories, and furniture reflected/displayed in this plan(s) are strictly illustrative and representational (not actual) in nature and are only for the purpose of illustrating / reflecting one of the possible layouts which the Purchaser could arrange after the Unit is handed over and do not form part of the Unit. No furniture, goods, accessories are included in the sale, unless such items are specifically included in Schedule A of the SPA.

Studio Apartment Type 03-T / 435 sq feet²

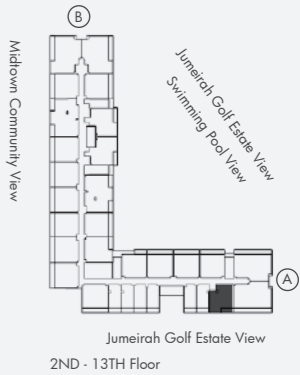
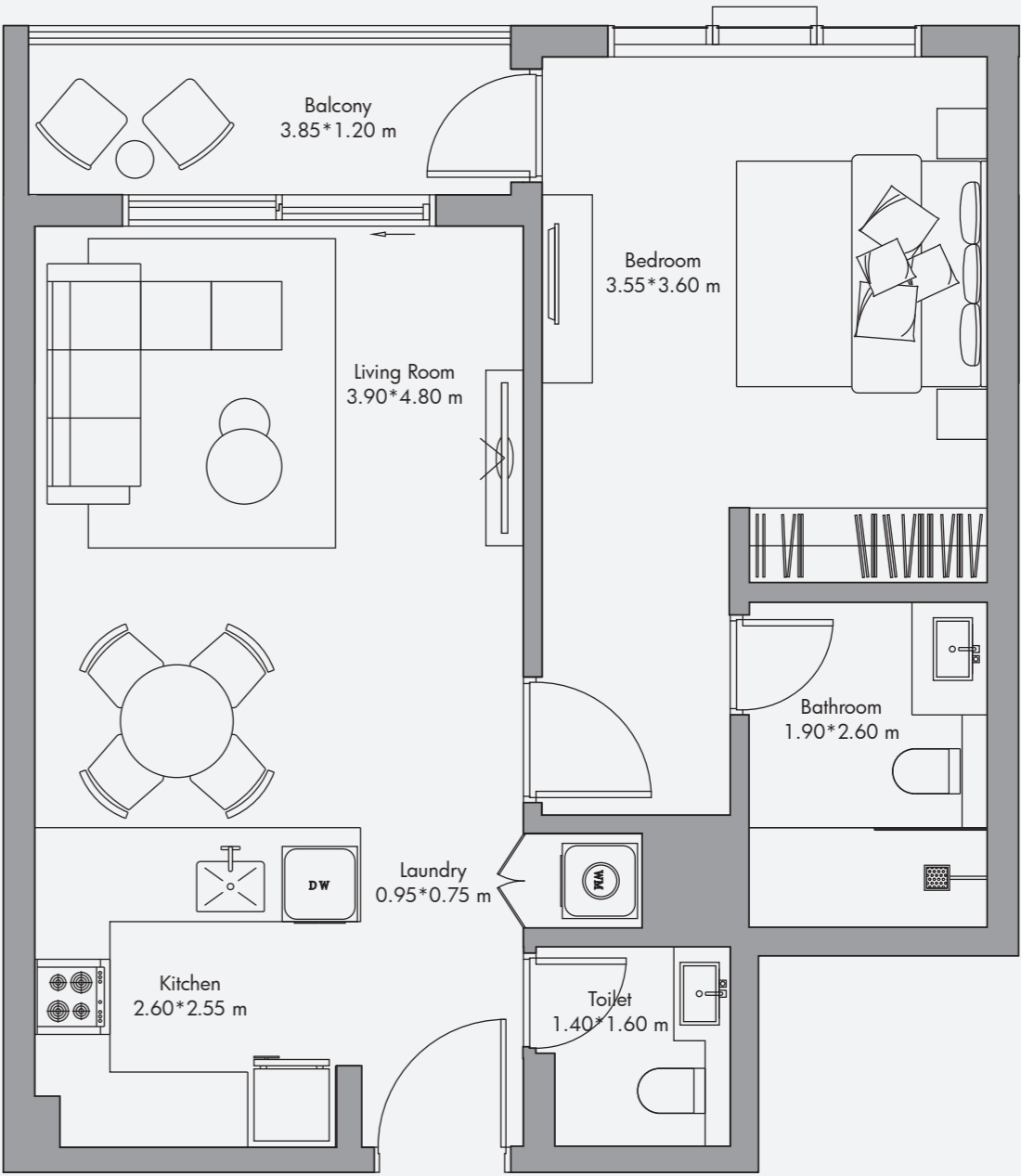
Unit	320 sq feet ²
Terrace	115 sq feet ²
Total	435 sq feet ²



Disclaimer:
All the dimensions are in meters. The Unit shown is typical, and actual Unit may vary in dimensions, areas, layout, material specification, orientation, and location. Some of the Units may have a mirrored layout of the above plan. Unit Windows, Façade, Balcony door location, Fixtures, Kitchen Cabinets, Sanitary ware, and Wardrobes, including each of their location as shown in the plan is indicative and subject to revision by the Seller. All fixtures, fittings, goods, accessories, and furniture reflected/displayed in this plan(s) are strictly illustrative and representational (not actual) in nature and are only for the purpose of illustrating / reflecting one of the possible layouts which the Purchaser could arrange after the Unit is handed over and do not form part of the Unit. No furniture, goods, accessories are included in the sale, unless such items are specifically included in Schedule A of the SPA.

1 Bedroom Apartment Type 01 / 710 sq feet²

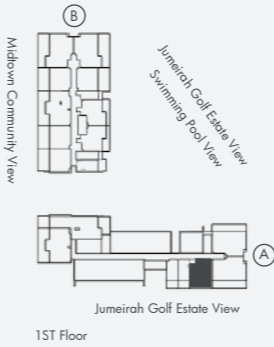
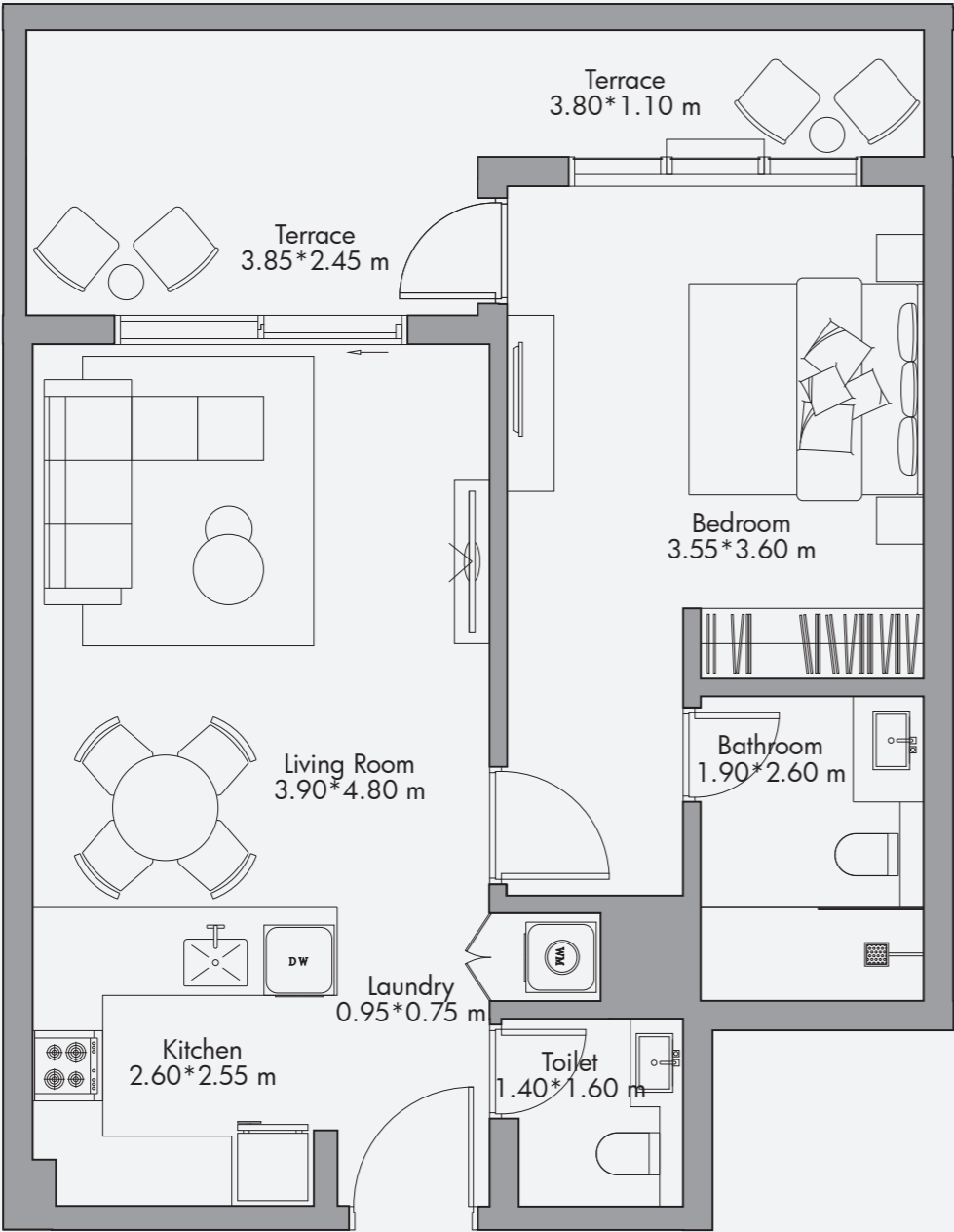
Unit	650 sq feet ²
Balcony	60 sq feet ²
Total	710 sq feet ²



Disclaimer:
All the dimensions are in meters. The Unit shown is typical, and actual Unit may vary in dimensions, areas, layout, material specification, orientation, and location. Some of the Units may have a mirrored layout of the above plan. Unit Windows, Façade, Balcony door location, Fixtures, Kitchen Cabinets, Sanitary ware, and Wardrobes, including each of their location as shown in the plan is indicative and subject to revision by the Seller. All fixtures, fittings, goods, accessories, and furniture reflected/displayed in this plan(s) are strictly illustrative and representational (not actual) in nature and are only for the purpose of illustrating / reflecting one of the possible layouts which the Purchaser could arrange after the Unit is handed over and do not form part of the Unit. No furniture, goods, accessories are included in the sale, unless such items are specifically included in Schedule A of the SPA.

1 Bedroom Apartment Type 01-T / 820 sq feet²

Unit	650 sq feet ²
Terrace	170 sq feet ²
Total	820 sq feet ²



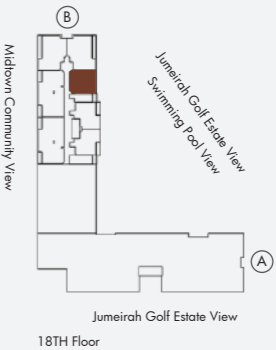
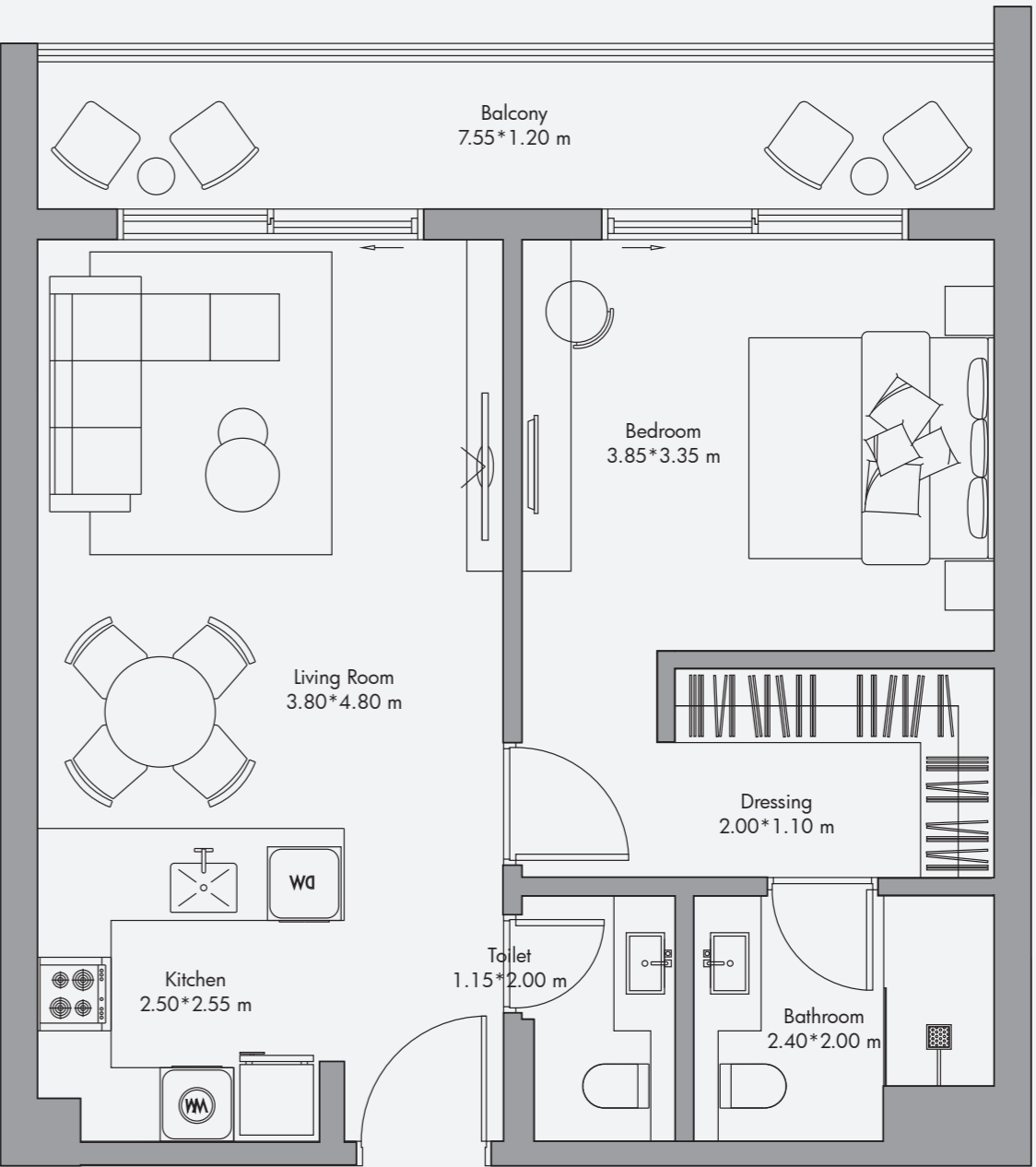
Disclaimer:
All the dimensions are in meters. The Unit shown is typical, and actual Unit may vary in dimensions, areas, layout, material specification, orientation, and location. Some of the Units may have a mirrored layout of the above plan. Unit Windows, Façade, Balcony door location, Fixtures, Kitchen Cabinets, Sanitary ware, and Wardrobes, including each of their location as shown in the plan is indicative and subject to revision by the Seller. All fixtures, fittings, goods, accessories, and furniture reflected/displayed in this plan(s) are strictly illustrative and representational (not actual) in nature and are only for the purpose of illustrating / reflecting one of the possible layouts which the Purchaser could arrange after the Unit is handed over and do not form part of the Unit. No furniture, goods, accessories are included in the sale, unless such items are specifically included in Schedule A of the SPA.

1 Bedroom Apartment Type 02 / 765 sq feet² - Type 02a / 770 sq feet²
- Type 02b / 775 sq feet²

Unit	645 sq feet ²
Balcony	120 sq feet ²
Total	765 sq feet ²

Unit	650 sq feet ²
Balcony	120 sq feet ²
Total	770 sq feet ²

Unit	655 sq feet ²
Balcony	120 sq feet ²
Total	775 sq feet ²

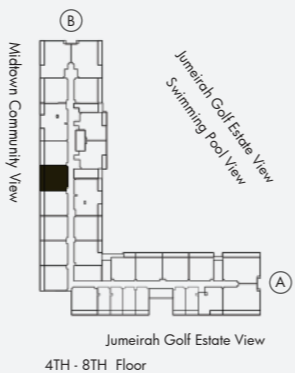
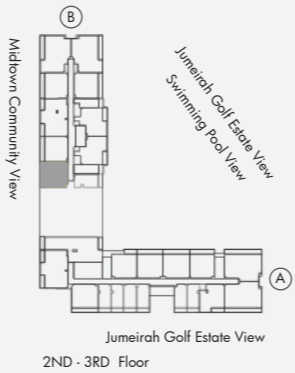
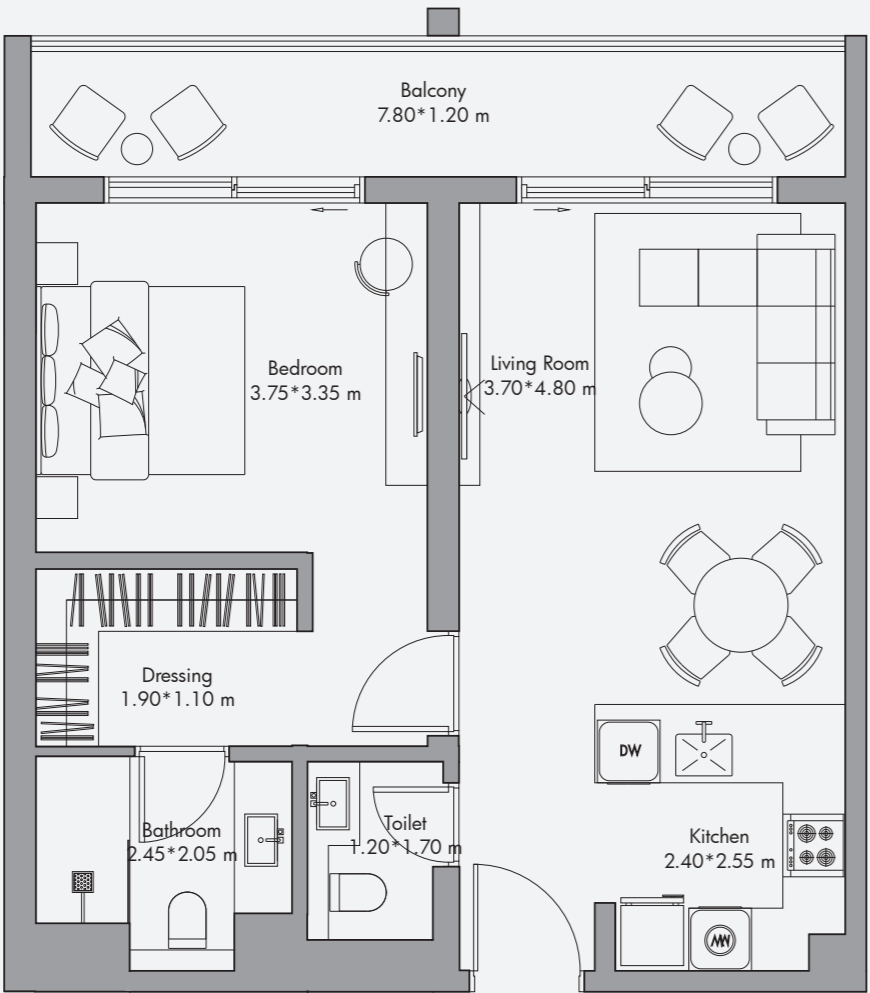


Disclaimer:
All the dimensions are in meters. The Unit shown is typical, and actual Unit may vary in dimensions, areas, layout, material specification, orientation, and location. Some of the Units may have a mirrored layout of the above plan. Unit Windows, Façade, Balcony door location, Fixtures, Kitchen Cabinets, Sanitary ware, and Wardrobes, including each of their location as shown in the plan is indicative and subject to revision by the Seller. All fixtures, fittings, goods, accessories, and furniture reflected/displayed in this plan(s) are strictly illustrative and representational (not actual) in nature and are only for the purpose of illustrating / reflecting one of the possible layouts which the Purchaser could arrange after the Unit is handed over and do not form part of the Unit. No furniture, goods, accessories are included in the sale, unless such items are specifically included in Schedule A of the SPA.

1 Bedroom Apartment Type 02* / 760 sq feet² - Type 02*a / 780 sq feet²

Unit	640 sq feet ²
Balcony	120 sq feet ²
Total	760 sq feet ²

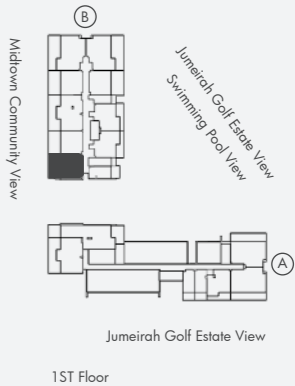
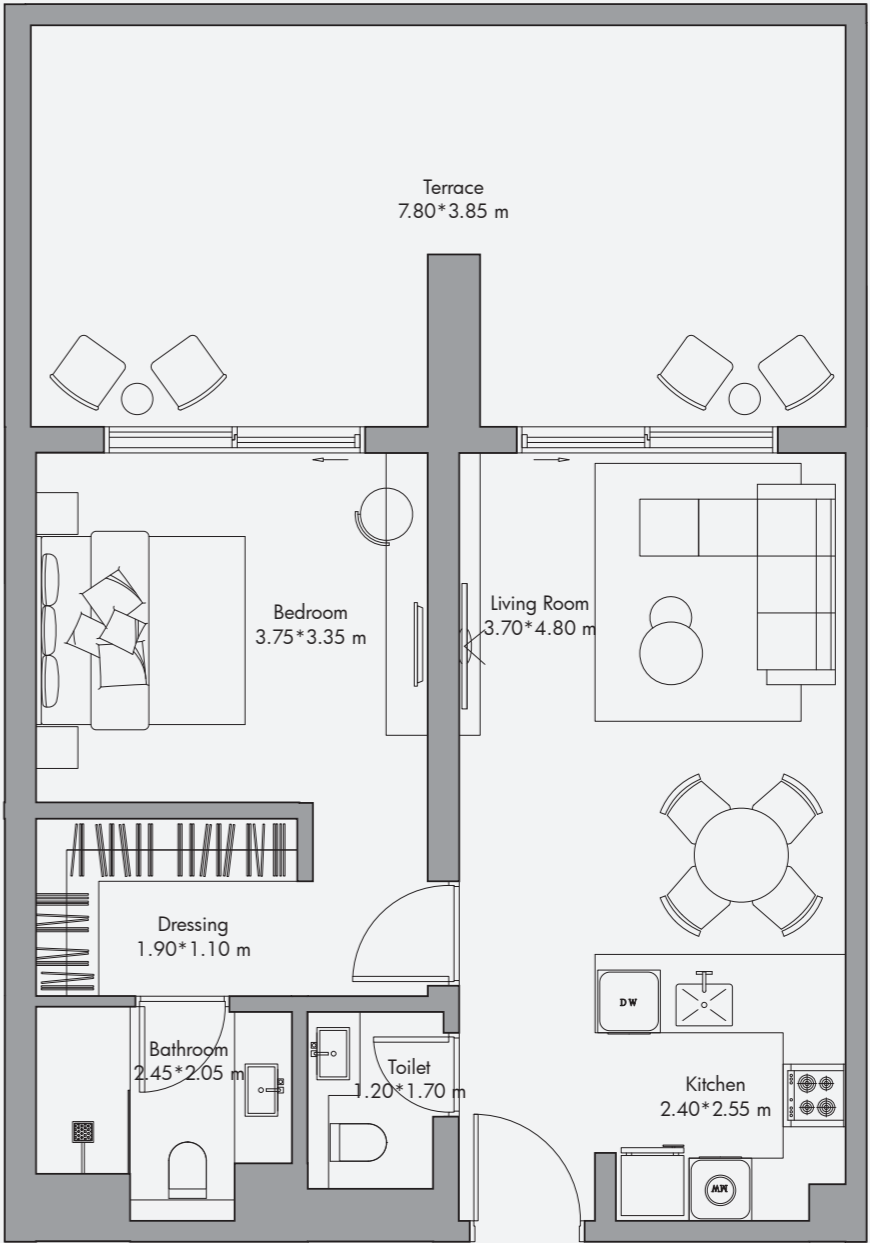
Unit	660 sq feet ²
Balcony	120 sq feet ²
Total	780 sq feet ²



Disclaimer:
All the dimensions are in meters. The Unit shown is typical, and actual Unit may vary in dimensions, areas, layout, material specification, orientation, and location. Some of the Units may have a mirrored layout of the above plan. Unit Windows, Façade, Balcony door location, Fixtures, Kitchen Cabinets, Sanitary ware, and Wardrobes, including each of their location as shown in the plan is indicative and subject to revision by the Seller. All fixtures, fittings, goods, accessories, and furniture reflected/displayed in this plan(s) are strictly illustrative and representational (not actual) in nature and are only for the purpose of illustrating /reflecting one of the possible layouts which the Purchaser could arrange after the Unit is handed over and do not form part of the Unit. No furniture, goods, accessories are included in the sale, unless such items are specifically included in Schedule A of the SPA.

1 Bedroom Apartment Type 2T* / 1010 sq feet²

Unit	660 sq feet ²
Terrace	350 sq feet ²
Total	1010 sq feet ²



Disclaimer:
All the dimensions are in meters. The Unit shown is typical, and actual Unit may vary in dimensions, areas, layout, material specification, orientation, and location. Some of the Units may have a mirrored layout of the above plan. Unit Windows, Façade, Balcony door location, Fixtures, Kitchen Cabinets, Sanitary ware, and Wardrobes, including each of their location as shown in the plan is indicative and subject to revision by the Seller. All fixtures, fittings, goods, accessories, and furniture reflected/displayed in this plan(s) are strictly illustrative and representational (not actual) in nature and are only for the purpose of illustrating /reflecting one of the possible layouts which the Purchaser could arrange after the Unit is handed over and do not form part of the Unit. No furniture, goods, accessories are included in the sale, unless such items are specifically included in Schedule A of the SPA.

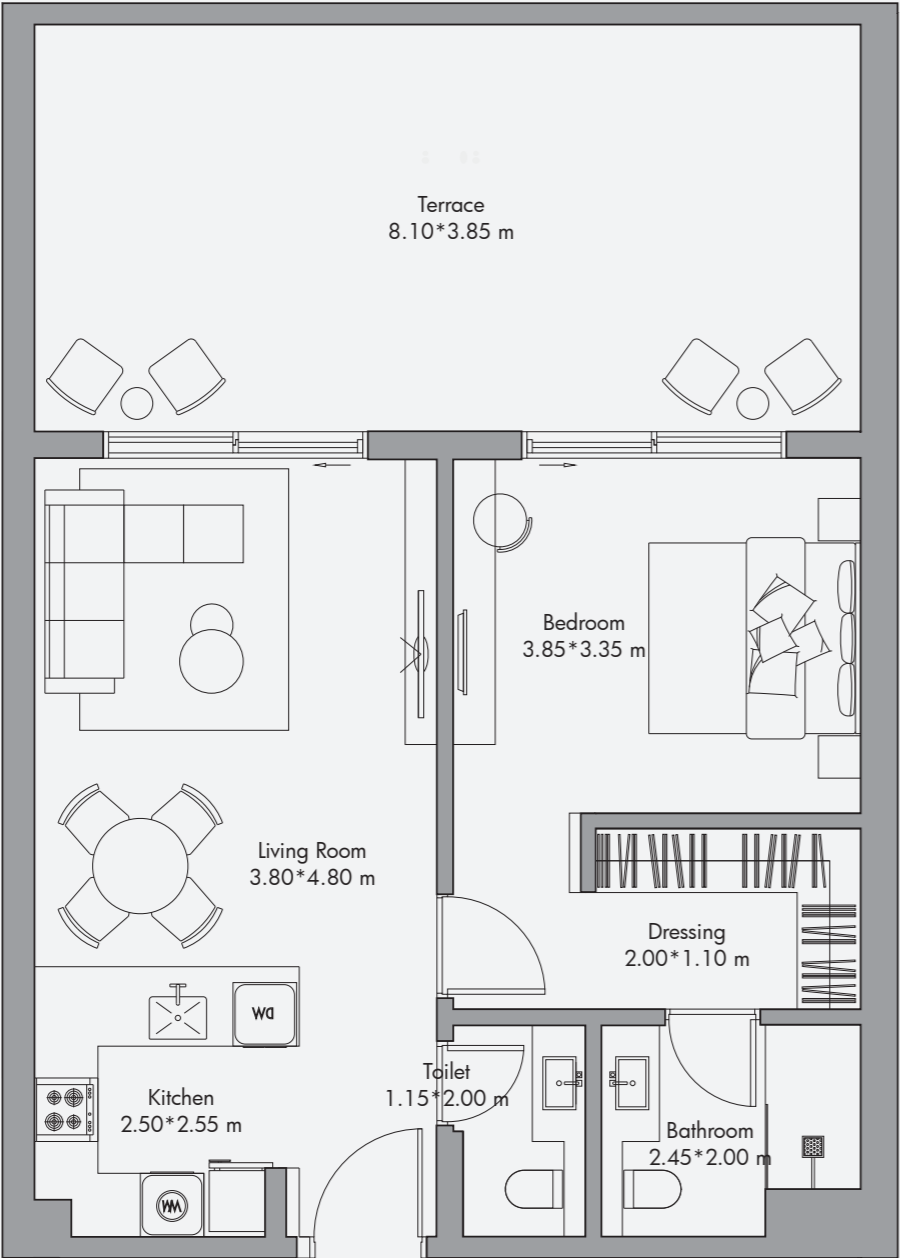
1 Bedroom Apartment Type 02-T / 1000 sq feet² - Type 02-T1 / 1005 sq feet²

- Type 02-T2 / 1020 sq feet²

Unit	650 sq feet ²
Terrace	350 sq feet ²
Total	1,000 sq feet ²

Unit	655 sq feet ²
Terrace	350 sq feet ²
Total	1,005 sq feet ²

Unit	655 sq feet ²
Terrace	365 sq feet ²
Total	1,020 sq feet ²

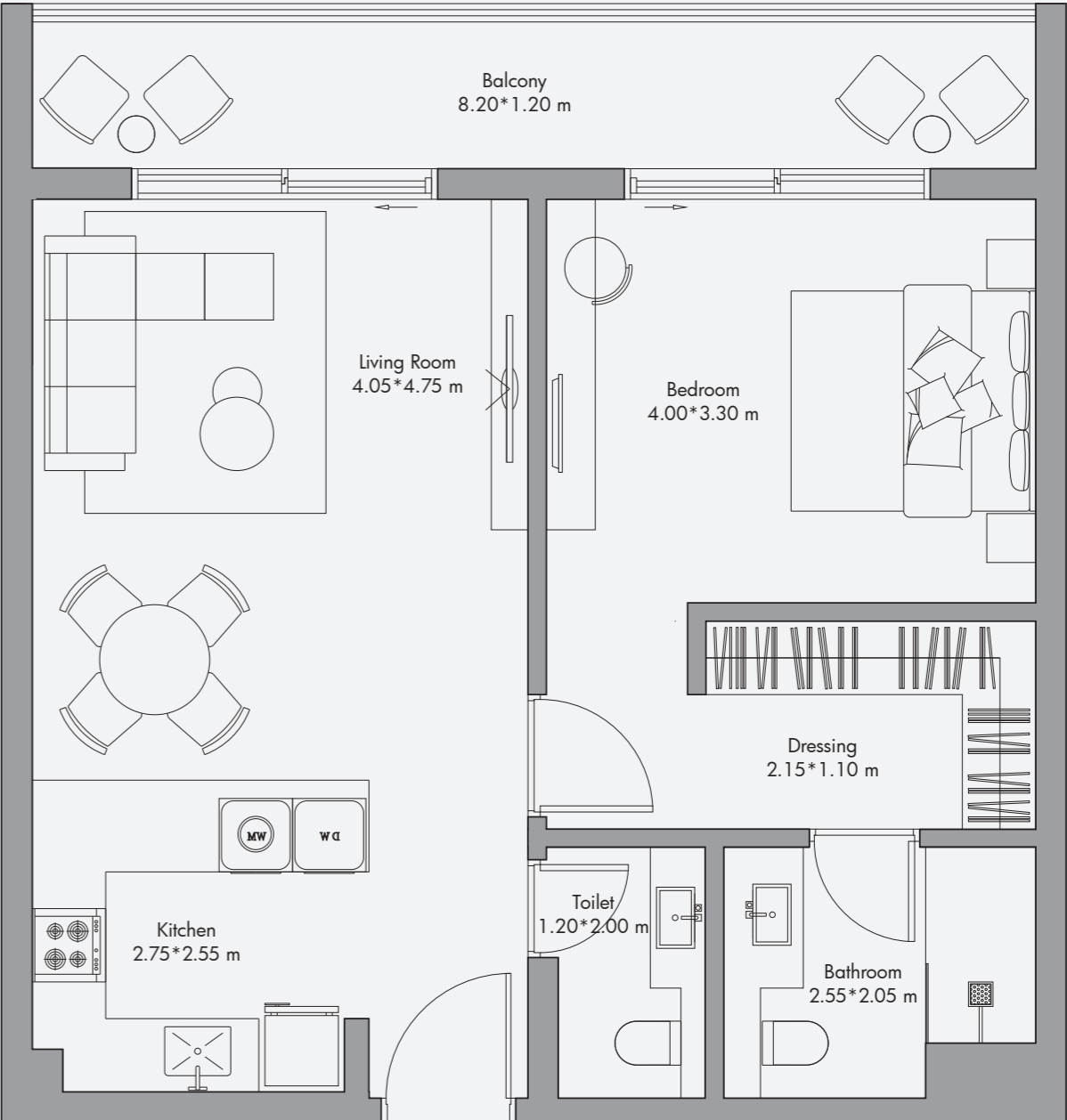


Disclaimer:
All the dimensions are in meters. The Unit shown is typical, and actual Unit may vary in dimensions, areas, layout, material specification, orientation, and location. Some of the Units may have a mirrored layout of the above plan. Unit Windows, Facade, Balcony door location, Fixtures, Kitchen Cabinets, Sanitary ware, and Wardrobes, including each of their location as shown in the plan is indicative and subject to revision by the Seller. All fixtures, fittings, goods, accessories, and furniture reflected/displayed in this plan(s) are strictly illustrative and representational (not actual) in nature and are only for the purpose of illustrating / reflecting one of the possible layouts which the Purchaser could arrange after the Unit is handed over and do not form part of the Unit. No furniture, goods, accessories are included in the sale, unless such items are specifically included in Schedule A of the SPA.

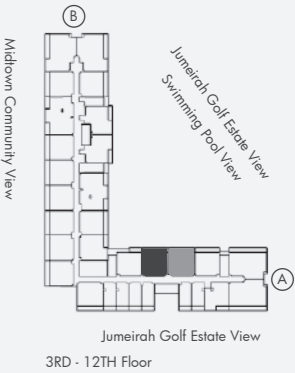


1 Bedroom Apartment Type 03 / 810 sq feet²

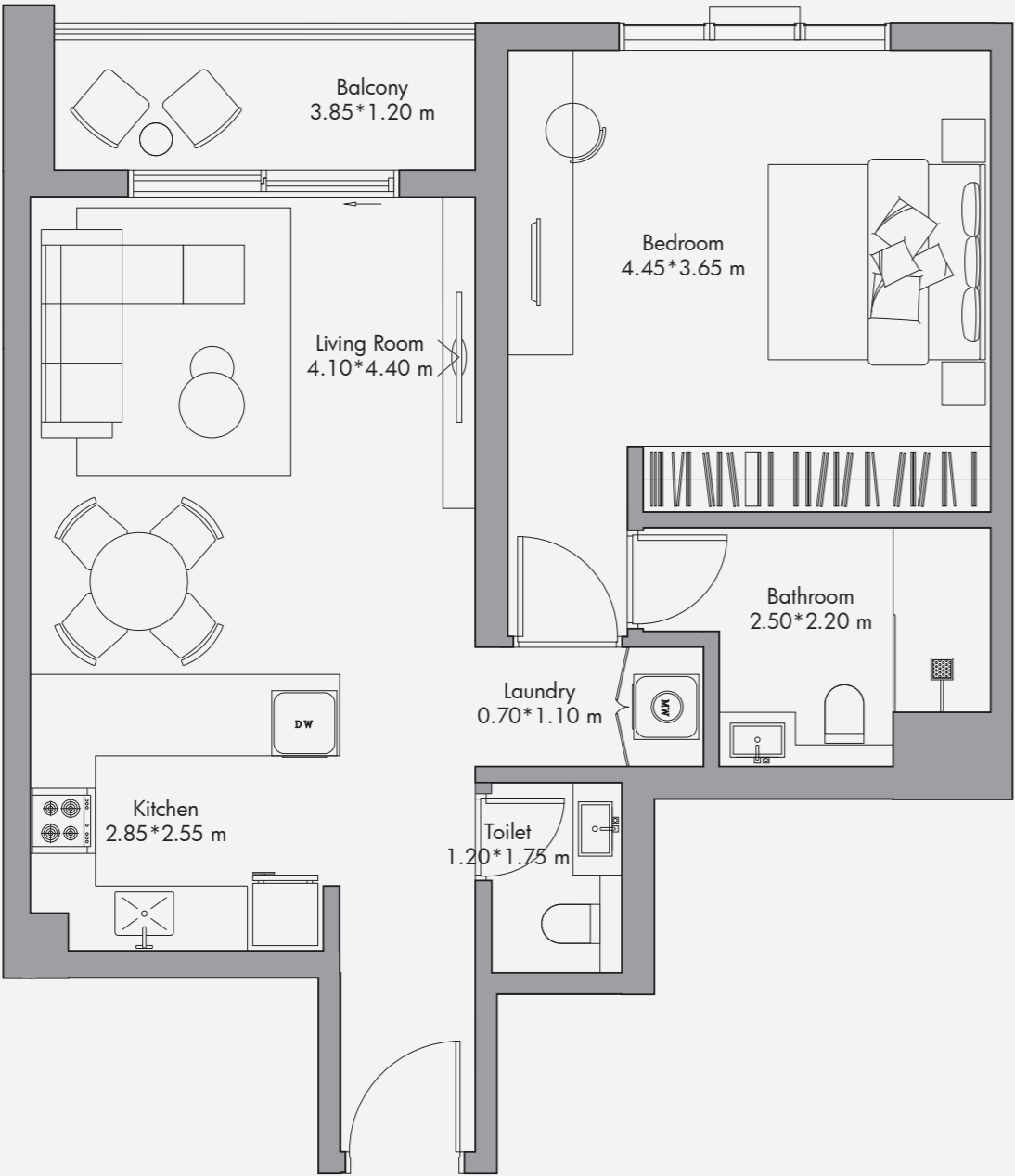
Unit	685 sq feet ²
Balcony	125 sq feet ²
Total	810 sq feet ²



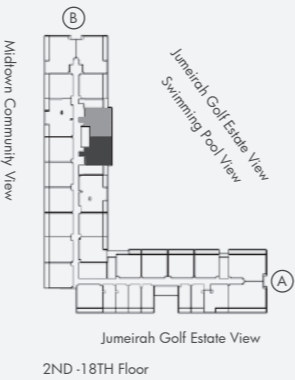
Disclaimer:
All the dimensions are in meters. The Unit shown is typical, and actual Unit may vary in dimensions, areas, layout, material specification, orientation, and location. Some of the Units may have a mirrored layout of the above plan. Unit Windows, Facade, Balcony door location, Fixtures, Kitchen Cabinets, Sanitary ware, and Wardrobes, including each of their location as shown in the plan is indicative and subject to revision by the Seller. All fixtures, fittings, goods, accessories, and furniture reflected/displayed in this plan(s) are strictly illustrative and representational (not actual) in nature and are only for the purpose of illustrating / reflecting one of the possible layouts which the Purchaser could arrange after the Unit is handed over and do not form part of the Unit. No furniture, goods, accessories are included in the sale, unless such items are specifically included in Schedule A of the SPA.



1 Bedroom Apartment Type 04 / 805 sq feet²

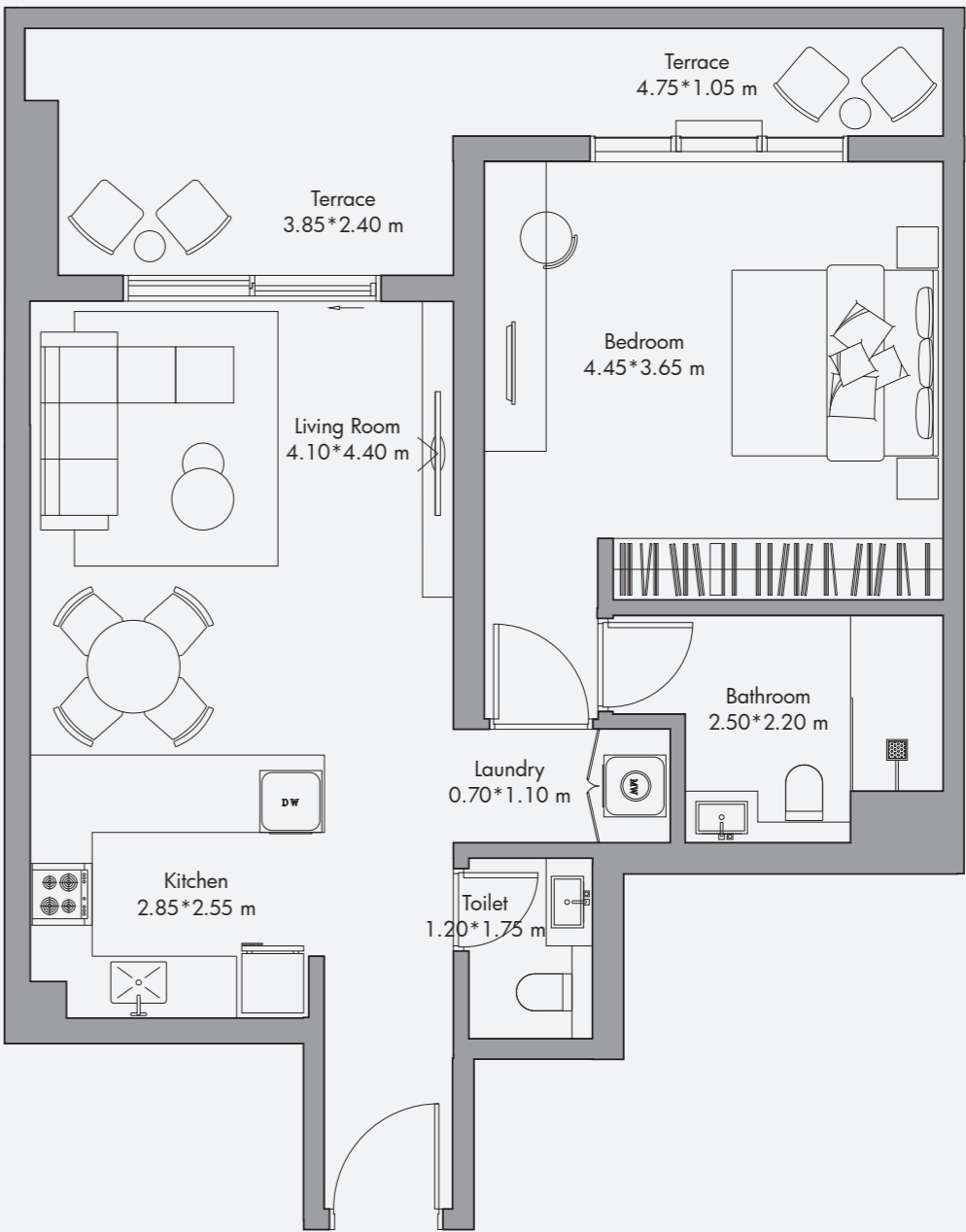


Unit	740 sq feet ²
Balcony	65 sq feet ²
Total	805 sq feet ²

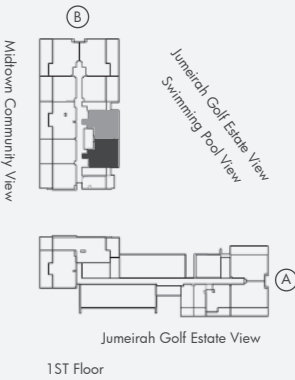


Disclaimer:
All the dimensions are in meters. The Unit shown is typical, and actual Unit may vary in dimensions, areas, layout, material specification, orientation, and location. Some of the Units may have a mirrored layout of the above plan. Unit Windows, Façade, Balcony door location, Fixtures, Kitchen Cabinets, Sanitary ware, and Wardrobes, including each of their location as shown in the plan is indicative and subject to revision by the Seller. All fixtures, fittings, goods, accessories, and furniture reflected/displayed in this plan(s) are strictly illustrative and representational (not actual) in nature and are only for the purpose of illustrating / reflecting one of the possible layouts which the Purchaser could arrange after the Unit is handed over and do not form part of the Unit. No furniture, goods, accessories are included in the sale, unless such items are specifically included in Schedule A of the SPA.

1 Bedroom Apartment Type 04-T/ 925 sq feet²



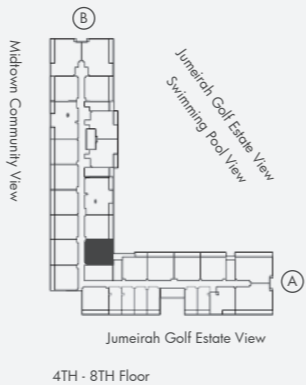
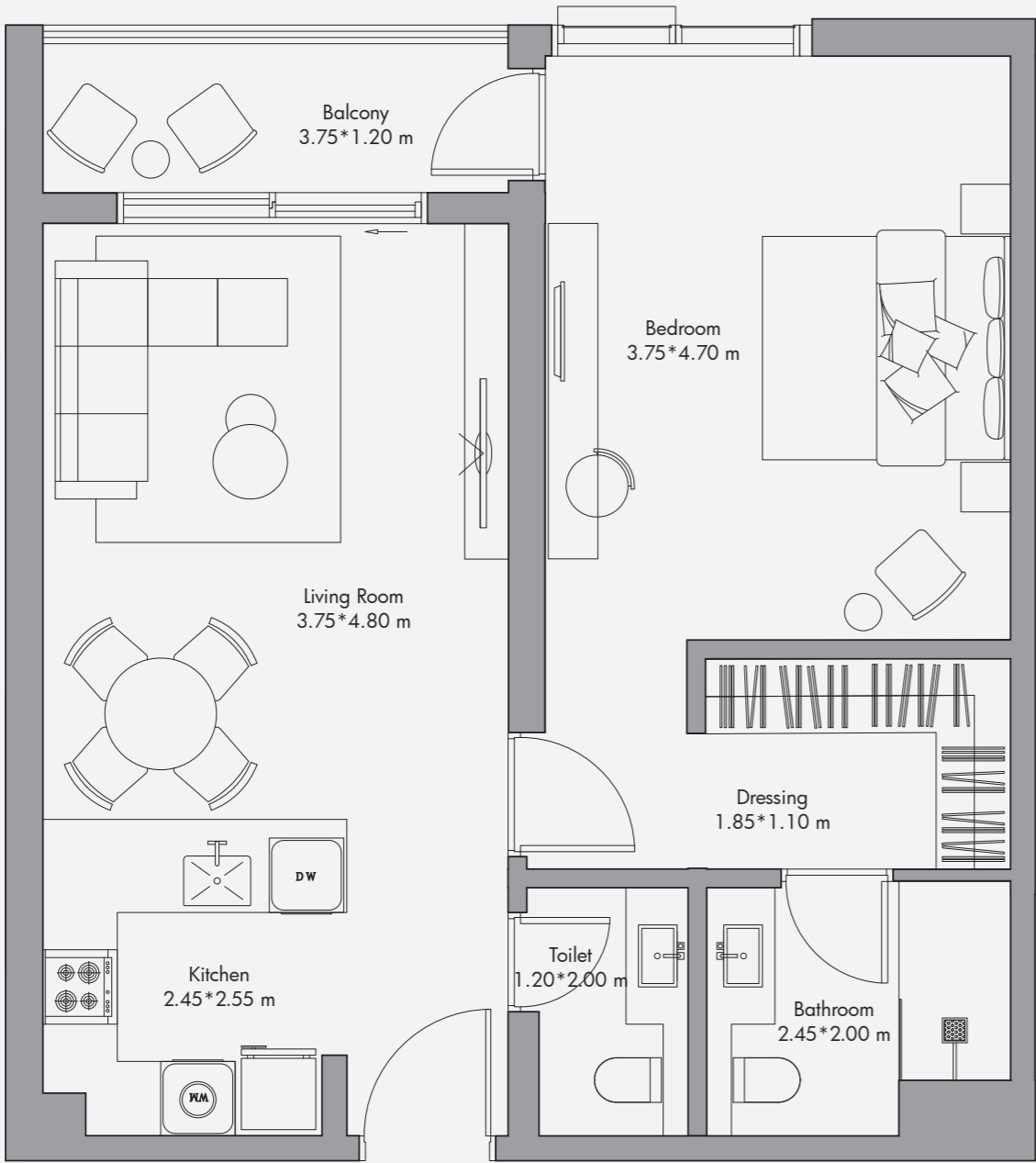
Unit	740 sq feet ²
Terrace	185 sq feet ²
Total	925 sq feet ²



Disclaimer:
All the dimensions are in meters. The Unit shown is typical, and actual Unit may vary in dimensions, areas, layout, material specification, orientation, and location. Some of the Units may have a mirrored layout of the above plan. Unit Windows, Façade, Balcony door location, Fixtures, Kitchen Cabinets, Sanitary ware, and Wardrobes, including each of their location as shown in the plan is indicative and subject to revision by the Seller. All fixtures, fittings, goods, accessories, and furniture reflected/displayed in this plan(s) are strictly illustrative and representational (not actual) in nature and are only for the purpose of illustrating / reflecting one of the possible layouts which the Purchaser could arrange after the Unit is handed over and do not form part of the Unit. No furniture, goods, accessories are included in the sale, unless such items are specifically included in Schedule A of the SPA.

1 Bedroom Apartment Type 05 / 770 sq feet²

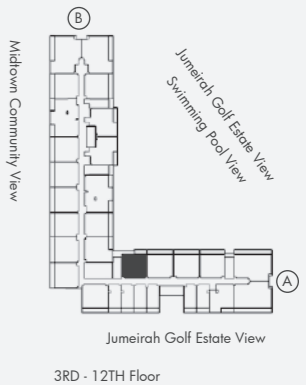
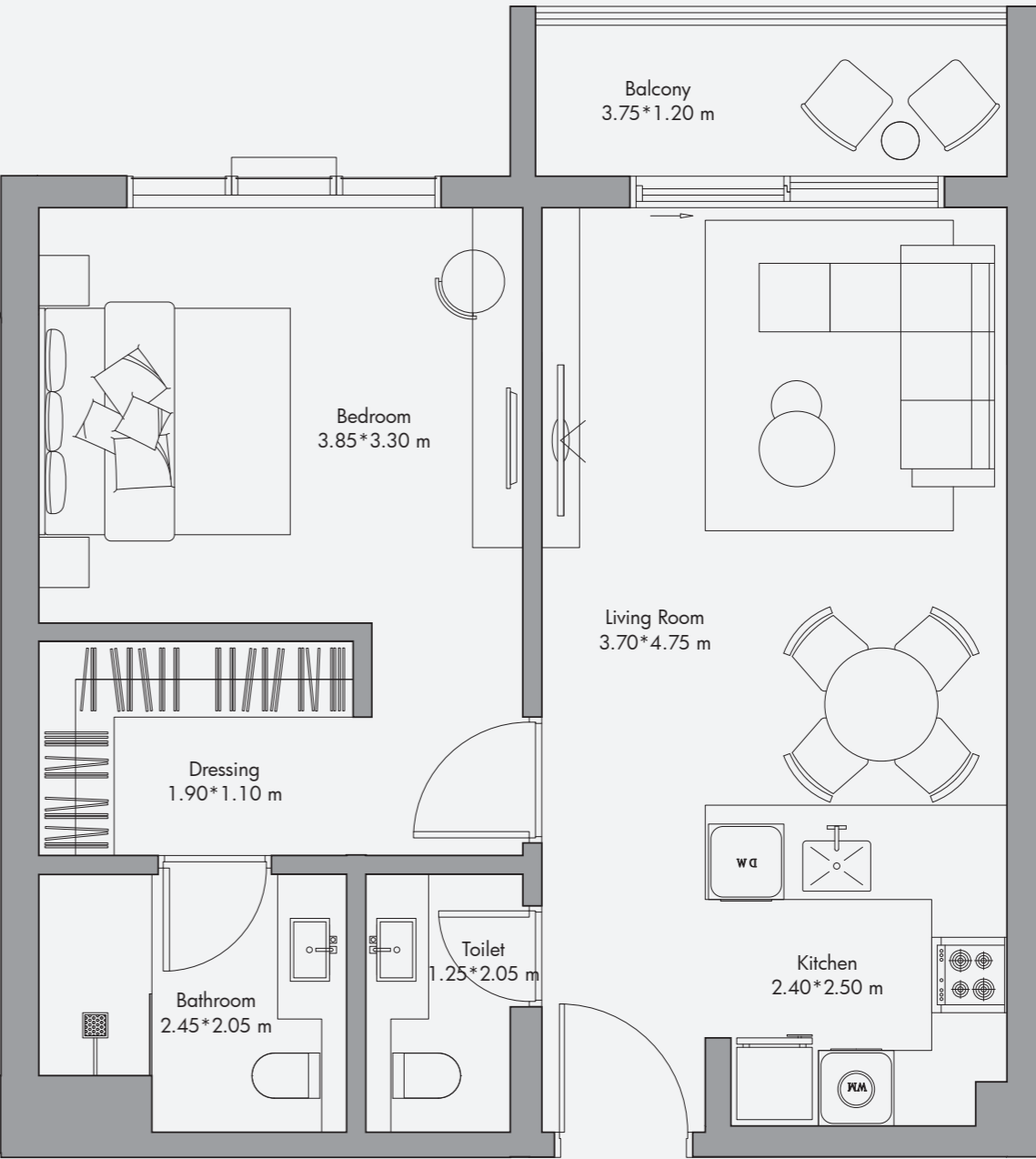
Unit	710 sq feet ²
Balcony	60 sq feet ²
Total	770 sq feet ²



Disclaimer:
All the dimensions are in meters. The Unit shown is typical, and actual Unit may vary in dimensions, areas, layout, material specification, orientation, and location. Some of the Units may have a mirrored layout of the above plan. Unit Windows, Façade, Balcony door location, Fixtures, Kitchen Cabinets, Sanitary ware, and Wardrobes, including each of their location as shown in the plan is indicative and subject to revision by the Seller. All fixtures, fittings, goods, accessories, and furniture reflected/displayed in this plan(s) are strictly illustrative and representational (not actual) in nature and are only for the purpose of illustrating / reflecting one of the possible layouts which the Purchaser could arrange after the Unit is handed over and do not form part of the Unit. No furniture, goods, accessories are included in the sale, unless such items are specifically included in Schedule A of the SPA.

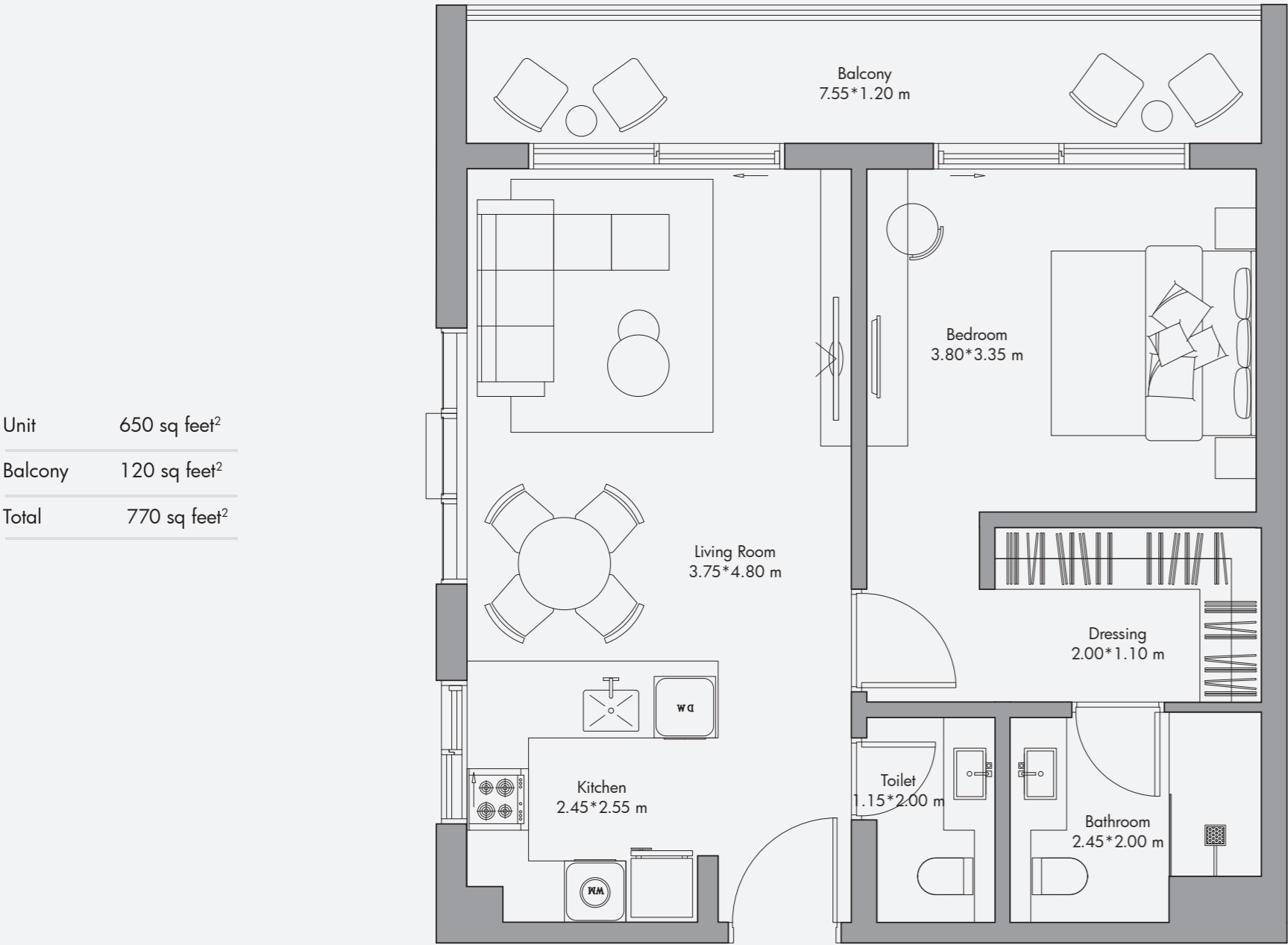
1 Bedroom Apartment Type 06 / 705 sq feet²

Unit	645 sq feet ²
Balcony	60 sq feet ²
Total	705 sq feet ²

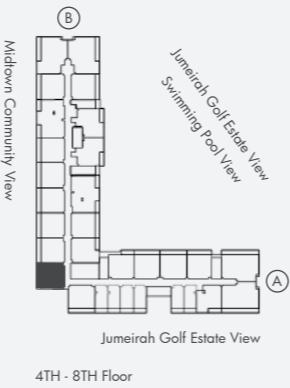


Disclaimer:
All the dimensions are in meters. The Unit shown is typical, and actual Unit may vary in dimensions, areas, layout, material specification, orientation, and location. Some of the Units may have a mirrored layout of the above plan. Unit Windows, Façade, Balcony door location, Fixtures, Kitchen Cabinets, Sanitary ware, and Wardrobes, including each of their location as shown in the plan is indicative and subject to revision by the Seller. All fixtures, fittings, goods, accessories, and furniture reflected/displayed in this plan(s) are strictly illustrative and representational (not actual) in nature and are only for the purpose of illustrating / reflecting one of the possible layouts which the Purchaser could arrange after the Unit is handed over and do not form part of the Unit. No furniture, goods, accessories are included in the sale, unless such items are specifically included in Schedule A of the SPA.

1 Bedroom Apartment Type 07 / 770 sq feet²

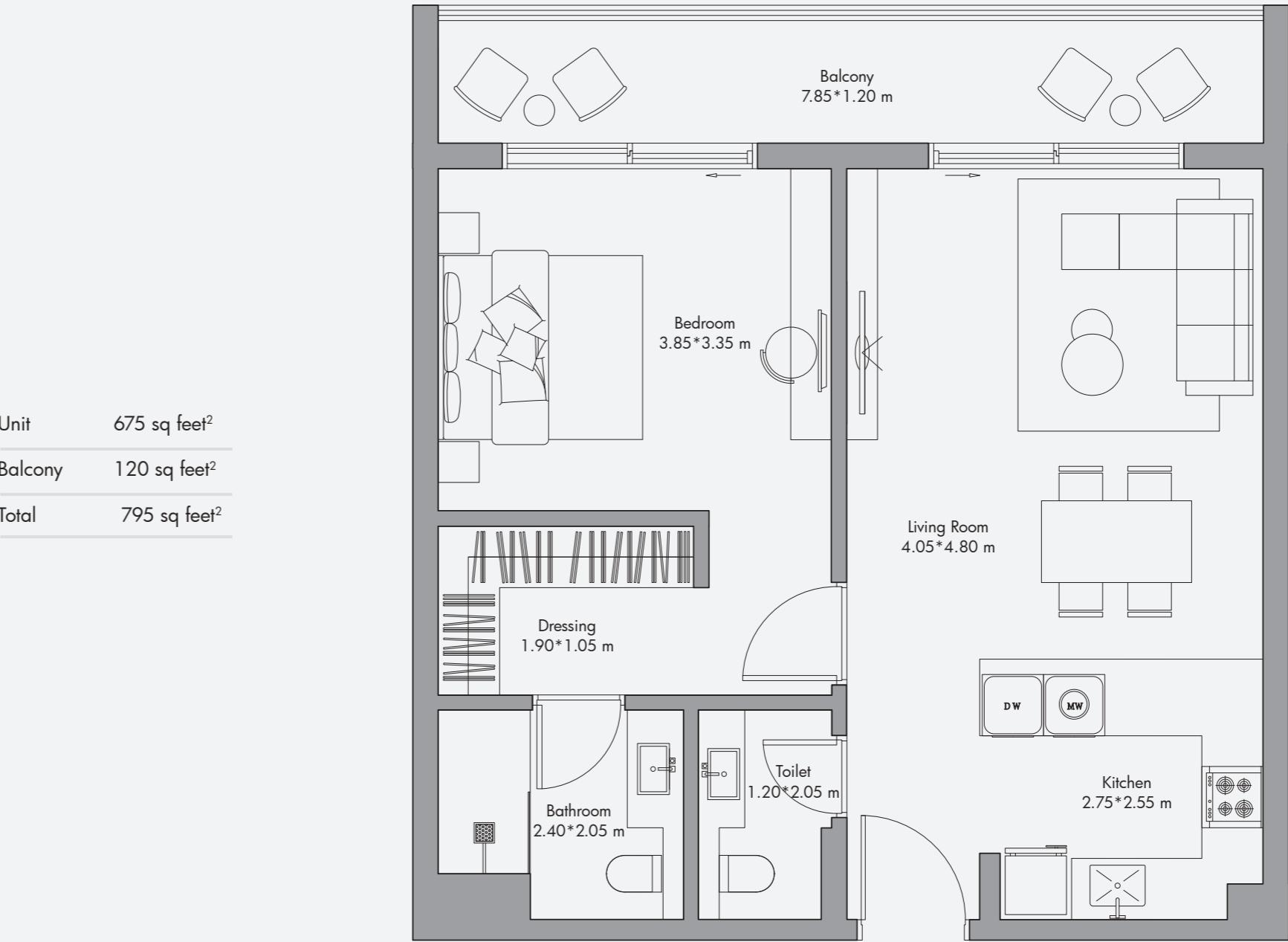


Unit	650 sq feet ²
Balcony	120 sq feet ²
Total	770 sq feet ²

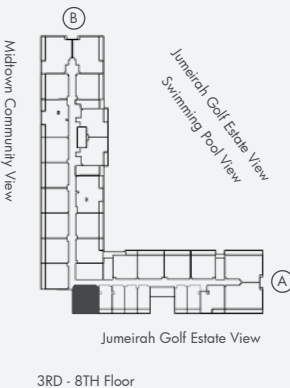


Disclaimer:
All the dimensions are in meters. The Unit shown is typical, and actual Unit may vary in dimensions, areas, layout, material specification, orientation, and location. Some of the Units may have a mirrored layout of the above plan. Unit Windows, Façade, Balcony door location, Fixtures, Kitchen Cabinets, Sanitary ware, and Wardrobes, including each of their location as shown in the plan is indicative and subject to revision by the Seller. All fixtures, fittings, goods, accessories, and furniture reflected/displayed in this plan(s) are strictly illustrative and representational (not actual) in nature and are only for the purpose of illustrating / reflecting one of the possible layouts which the Purchaser could arrange after the Unit is handed over and do not form part of the Unit. No furniture, goods, accessories are included in the sale, unless such items are specifically included in Schedule A of the SPA.

1 Bedroom Apartment Type 08 / 795 sq feet²

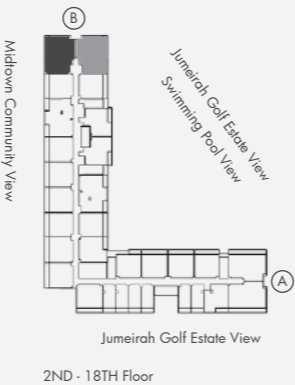
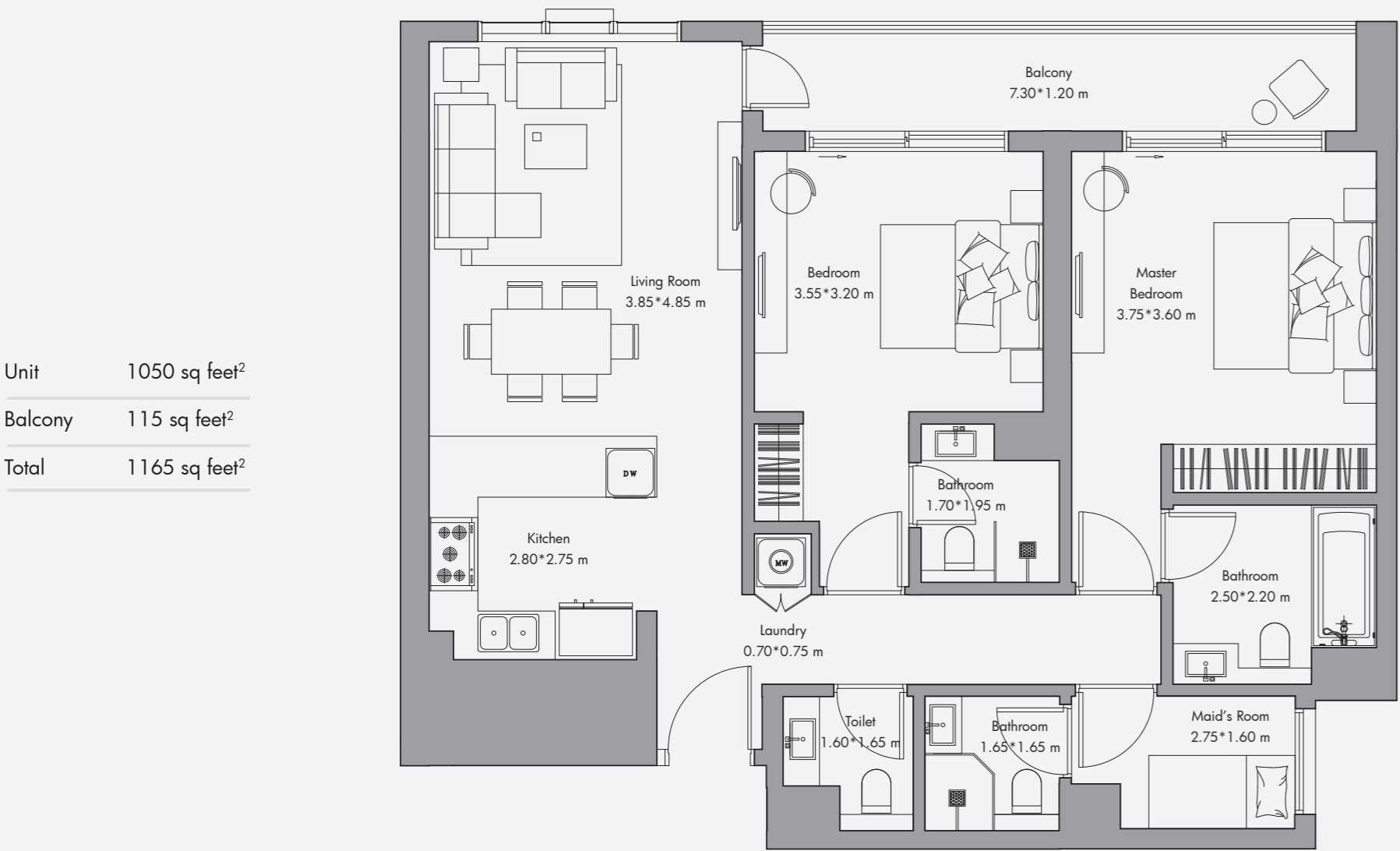


Unit	675 sq feet ²
Balcony	120 sq feet ²
Total	795 sq feet ²



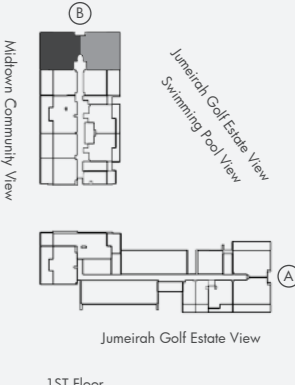
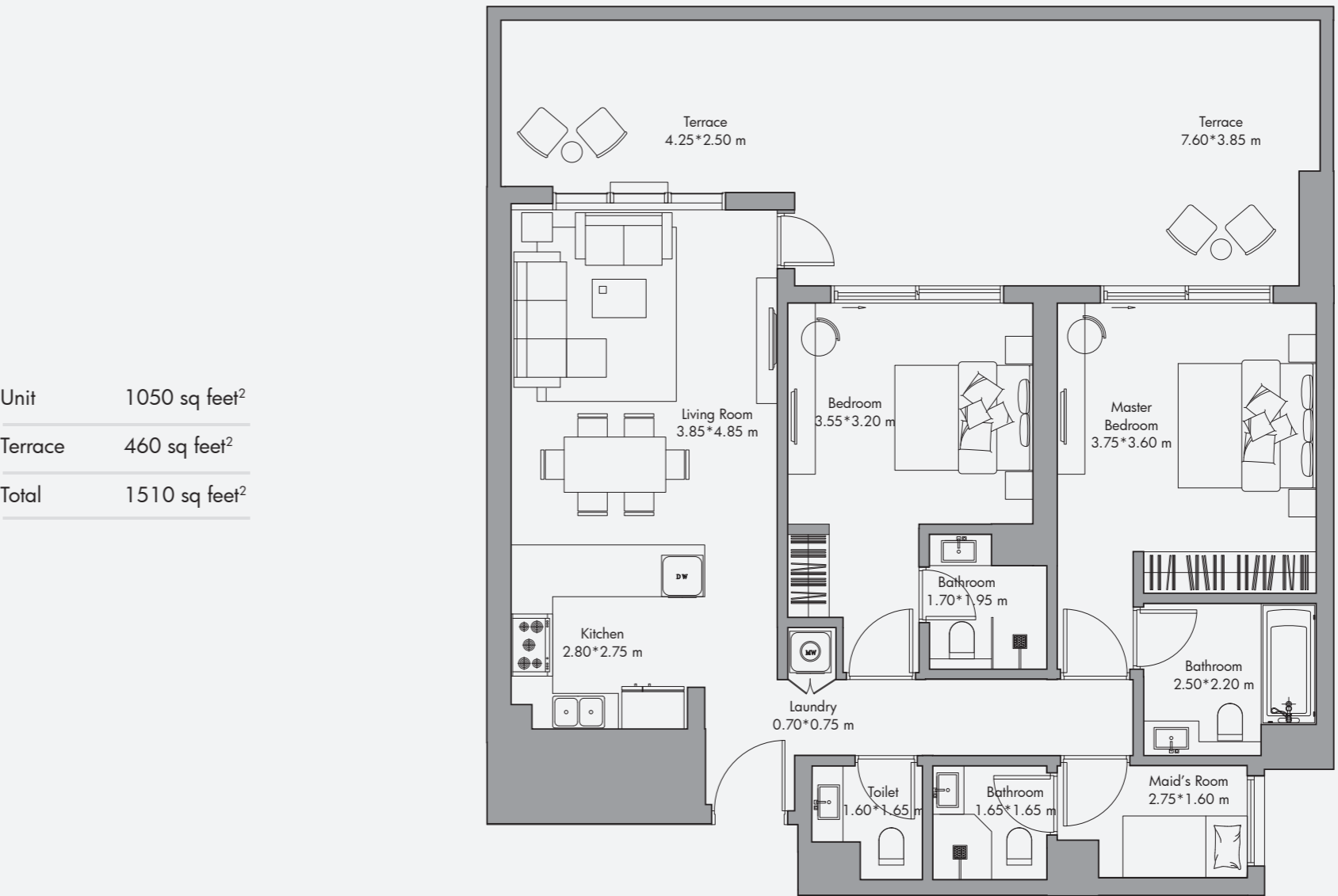
Disclaimer:
All the dimensions are in meters. The Unit shown is typical, and actual Unit may vary in dimensions, areas, layout, material specification, orientation, and location. Some of the Units may have a mirrored layout of the above plan. Unit Windows, Façade, Balcony door location, Fixtures, Kitchen Cabinets, Sanitary ware, and Wardrobes, including each of their location as shown in the plan is indicative and subject to revision by the Seller. All fixtures, fittings, goods, accessories, and furniture reflected/displayed in this plan(s) are strictly illustrative and representational (not actual) in nature and are only for the purpose of illustrating / reflecting one of the possible layouts which the Purchaser could arrange after the Unit is handed over and do not form part of the Unit. No furniture, goods, accessories are included in the sale, unless such items are specifically included in Schedule A of the SPA.

2 Bedroom Apartment Type 01 / 1165 sq feet²



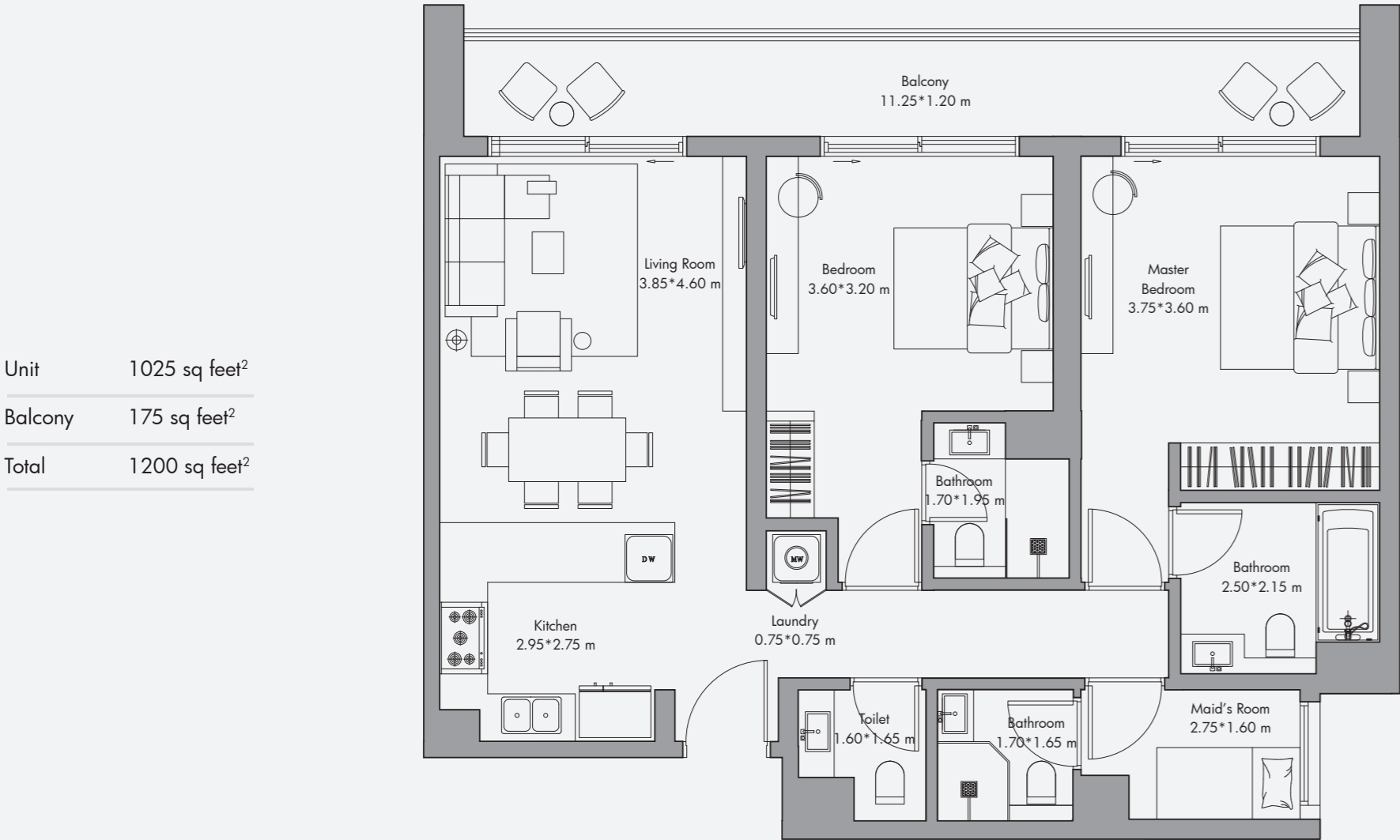
Disclaimer:
All the dimensions are in meters. The Unit shown is typical, and actual Unit may vary in dimensions, areas, layout, material specification, orientation, and location. Some of the Units may have a mirrored layout of the above plan. Unit Windows, Façade, Balcony door location, Fixtures, Kitchen Cabinets, Sanitary ware, and Wardrobes, including each of their location as shown in the plan is indicative and subject to revision by the Seller. All fixtures, fittings, goods, accessories, and furniture reflected/displayed in this plan(s) are strictly illustrative and representational (not actual) in nature and are only for the purpose of illustrating / reflecting one of the possible layouts which the Purchaser could arrange after the Unit is handed over and do not form part of the Unit. No furniture, goods, accessories are included in the sale, unless such items are specifically included in Schedule A of the SPA.

2 Bedroom Apartment Type 01-T / 1510 sq feet²

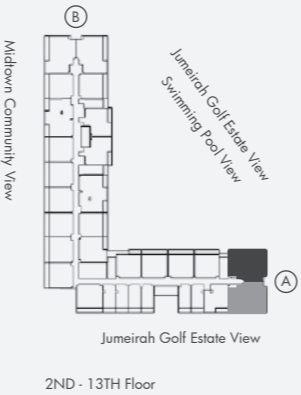


Disclaimer:
All the dimensions are in meters. The Unit shown is typical, and actual Unit may vary in dimensions, areas, layout, material specification, orientation, and location. Some of the Units may have a mirrored layout of the above plan. Unit Windows, Façade, Balcony door location, Fixtures, Kitchen Cabinets, Sanitary ware, and Wardrobes, including each of their location as shown in the plan is indicative and subject to revision by the Seller. All fixtures, fittings, goods, accessories, and furniture reflected/displayed in this plan(s) are strictly illustrative and representational (not actual) in nature and are only for the purpose of illustrating / reflecting one of the possible layouts which the Purchaser could arrange after the Unit is handed over and do not form part of the Unit. No furniture, goods, accessories are included in the sale, unless such items are specifically included in Schedule A of the SPA.

2 Bedroom Apartment Type 02 / 1200 sq feet²

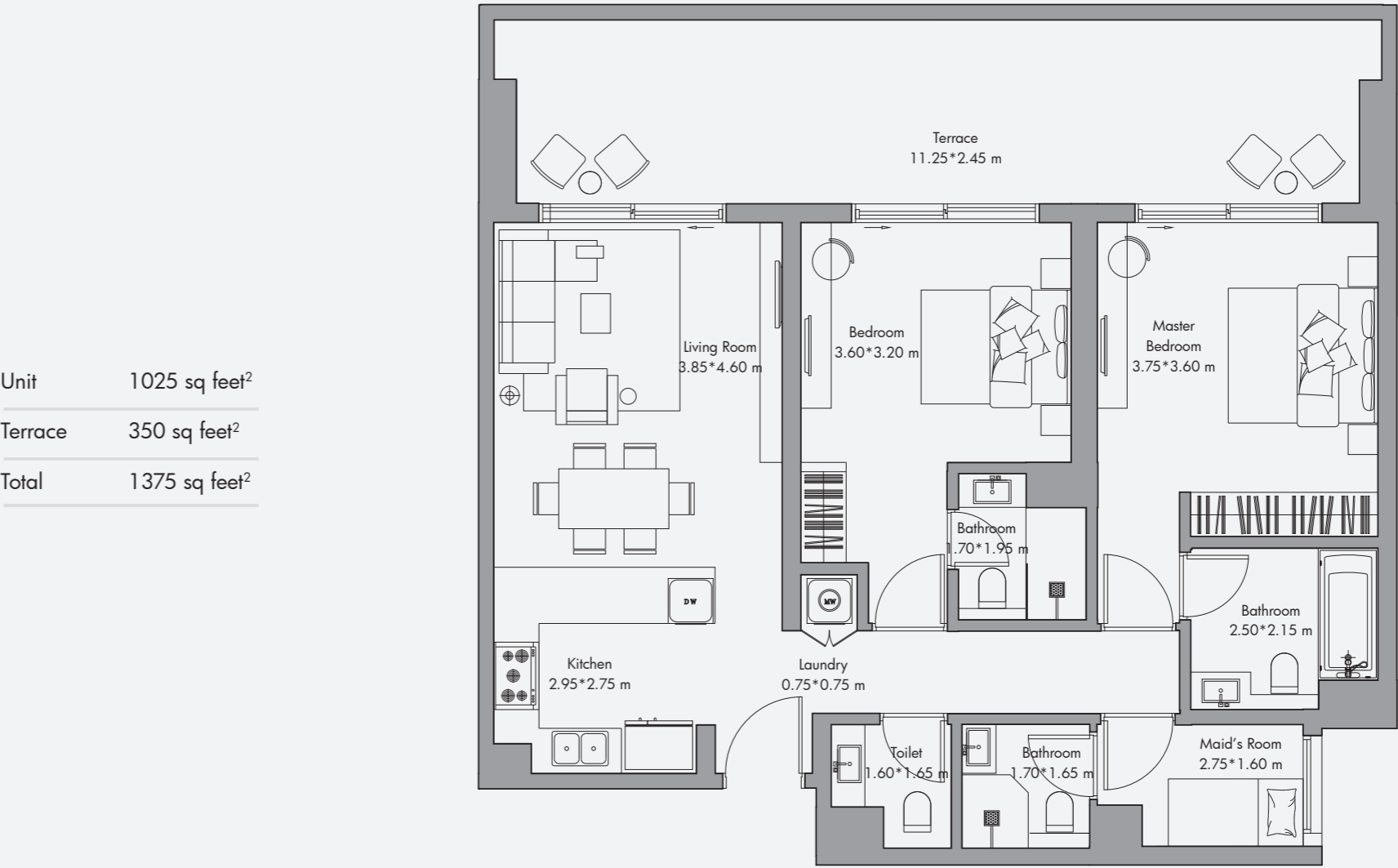


Unit	1025 sq feet ²
Balcony	175 sq feet ²
Total	1200 sq feet ²

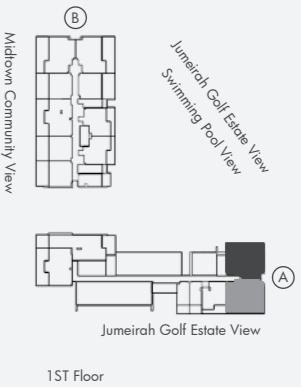


Disclaimer:
All the dimensions are in meters. The Unit shown is typical, and actual Unit may vary in dimensions, areas, layout, material specification, orientation, and location. Some of the Units may have a mirrored layout of the above plan. Unit Windows, Façade, Balcony door location, Fixtures, Kitchen Cabinets, Sanitary ware, and Wardrobes, including each of their location as shown in the plan is indicative and subject to revision by the Seller. All fixtures, fittings, goods, accessories, and furniture reflected/displayed in this plan(s) are strictly illustrative and representational (not actual) in nature and are only for the purpose of illustrating / reflecting one of the possible layouts which the Purchaser could arrange after the Unit is handed over and do not form part of the Unit. No furniture, goods, accessories are included in the sale, unless such items are specifically included in Schedule A of the SPA.

2 Bedroom Apartment Type 02-T / 1375 sq feet²



Unit	1025 sq feet ²
Terrace	350 sq feet ²
Total	1375 sq feet ²



Disclaimer:
All the dimensions are in meters. The Unit shown is typical, and actual Unit may vary in dimensions, areas, layout, material specification, orientation, and location. Some of the Units may have a mirrored layout of the above plan. Unit Windows, Façade, Balcony door location, Fixtures, Kitchen Cabinets, Sanitary ware, and Wardrobes, including each of their location as shown in the plan is indicative and subject to revision by the Seller. All fixtures, fittings, goods, accessories, and furniture reflected/displayed in this plan(s) are strictly illustrative and representational (not actual) in nature and are only for the purpose of illustrating / reflecting one of the possible layouts which the Purchaser could arrange after the Unit is handed over and do not form part of the Unit. No furniture, goods, accessories are included in the sale, unless such items are specifically included in Schedule A of the SPA.

2 Bedroom Apartment Type 03 / 1145 sq feet²



Disclaimer:
All the dimensions are in meters. The Unit shown is typical, and actual Unit may vary in dimensions, areas, layout, material specification, orientation, and location. Some of the Units may have a mirrored layout of the above plan. Unit Windows, Façade, Balcony door location, Fixtures, Kitchen Cabinets, Sanitary ware, and Wardrobes, including each of their location as shown in the plan is indicative and subject to revision by the Seller. All fixtures, fittings, goods, accessories, and furniture reflected/displayed in this plan(s) are strictly illustrative and representational (not actual) in nature and are only for the purpose of illustrating / reflecting one of the possible layouts which the Purchaser could arrange after the Unit is handed over and do not form part of the Unit. No furniture, goods, accessories are included in the sale, unless such items are specifically included in Schedule A of the SPA.

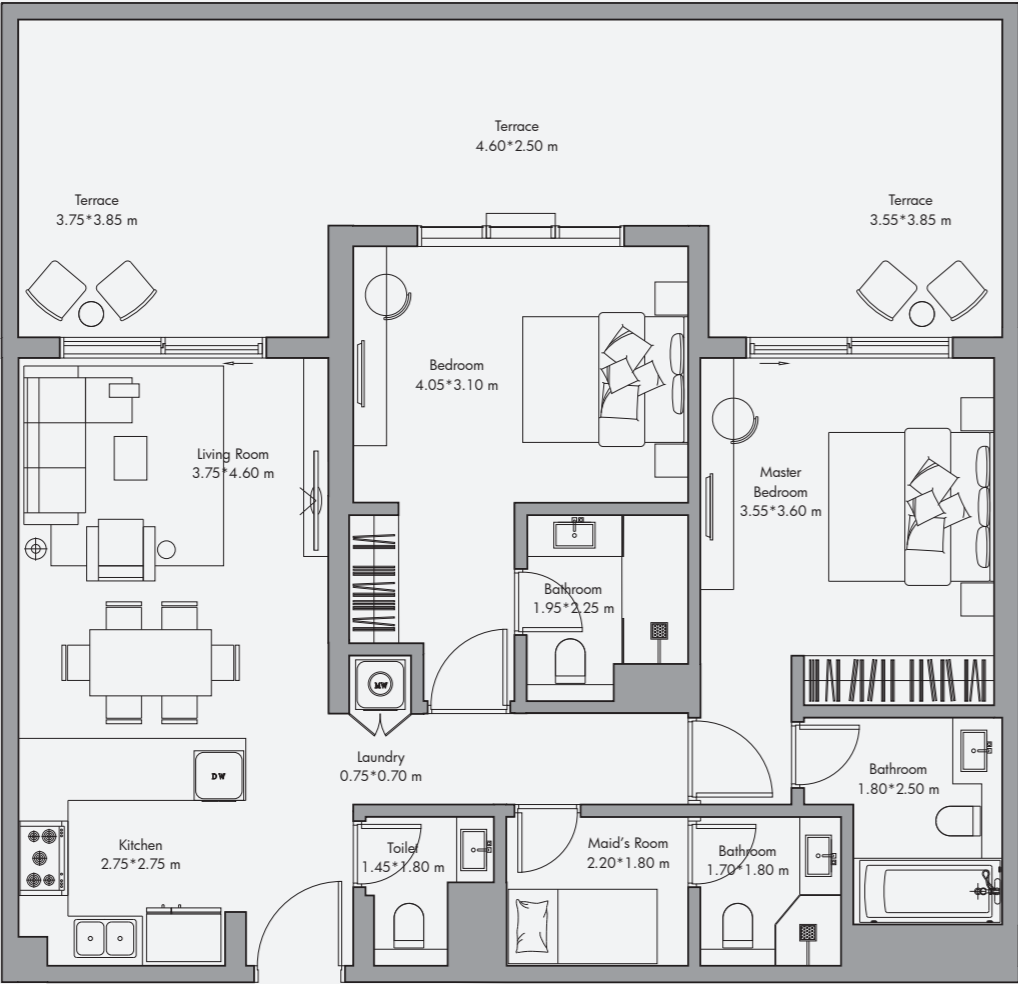
2 Bedroom Apartment Type 03* / 1130 sq feet²



Disclaimer:
All the dimensions are in meters. The Unit shown is typical, and actual Unit may vary in dimensions, areas, layout, material specification, orientation, and location. Some of the Units may have a mirrored layout of the above plan. Unit Windows, Façade, Balcony door location, Fixtures, Kitchen Cabinets, Sanitary ware, and Wardrobes, including each of their location as shown in the plan is indicative and subject to revision by the Seller. All fixtures, fittings, goods, accessories, and furniture reflected/displayed in this plan(s) are strictly illustrative and representational (not actual) in nature and are only for the purpose of illustrating / reflecting one of the possible layouts which the Purchaser could arrange after the Unit is handed over and do not form part of the Unit. No furniture, goods, accessories are included in the sale, unless such items are specifically included in Schedule A of the SPA.

2 Bedroom Apartment Type 03-T / 1495 sq feet²

Unit	1030 sq feet ²
Terrace	465 sq feet ²
Total	1495 sq feet ²

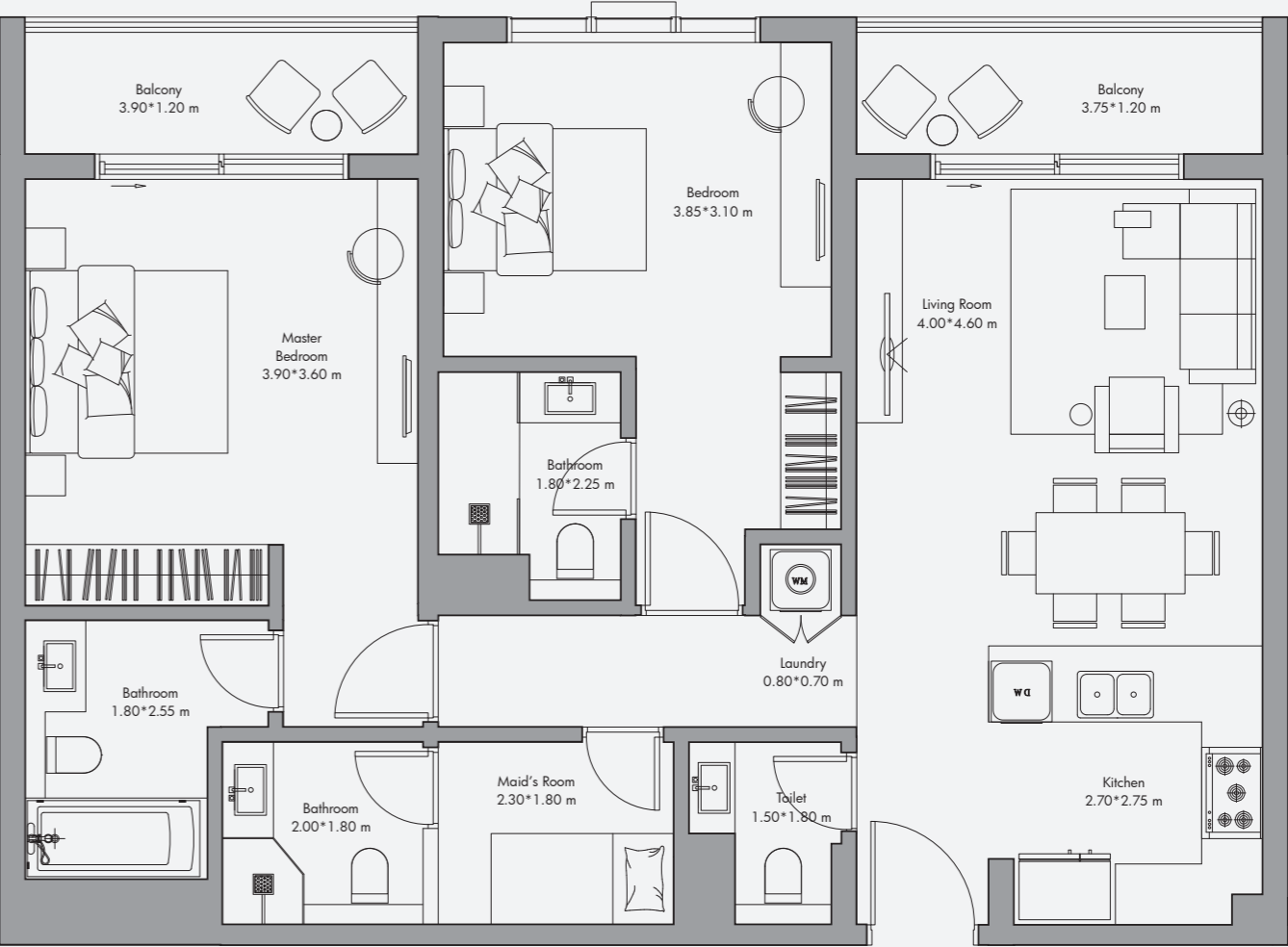


Disclaimer:
All the dimensions are in meters. The Unit shown is typical, and actual Unit may vary in dimensions, areas, layout, material specification, orientation, and location. Some of the Units may have a mirrored layout of the above plan. Unit Windows, Façade, Balcony door location, Fixtures, Kitchen Cabinets, Sanitary ware, and Wardrobes, including each of their location as shown in the plan is indicative and subject to revision by the Seller. All fixtures, fittings, goods, accessories, and furniture reflected/displayed in this plan(s) are strictly illustrative and representational (not actual) in nature and are only for the purpose of illustrating / reflecting one of the possible layouts which the Purchaser could arrange after the Unit is handed over and do not form part of the Unit. No furniture, goods, accessories are included in the sale, unless such items are specifically included in Schedule A of the SPA.

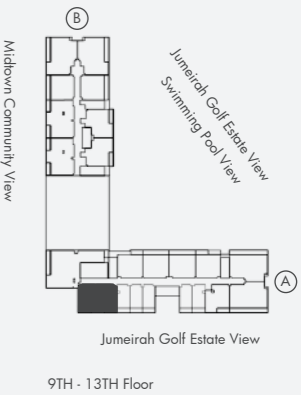


2 Bedroom Apartment Type 04 / 1183 sq feet²

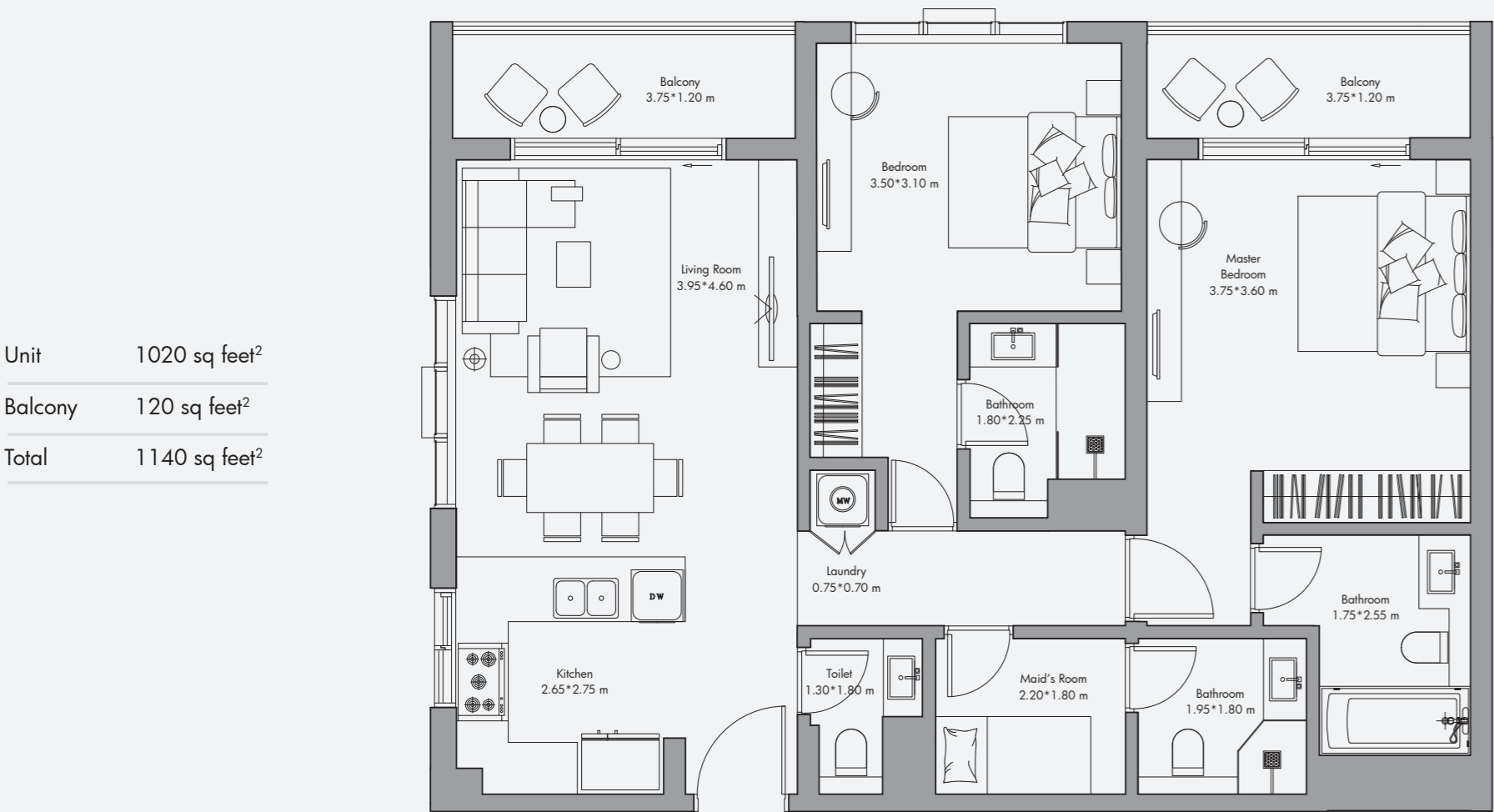
Unit	1060 sq feet ²
Balcony	123 sq feet ²
Total	1183 sq feet ²



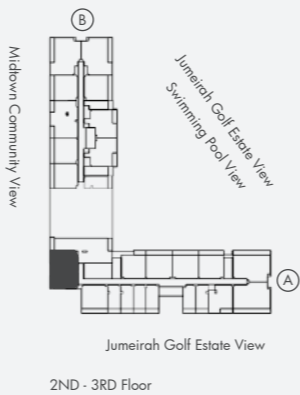
Disclaimer:
All the dimensions are in meters. The Unit shown is typical, and actual Unit may vary in dimensions, areas, layout, material specification, orientation, and location. Some of the Units may have a mirrored layout of the above plan. Unit Windows, Façade, Balcony door location, Fixtures, Kitchen Cabinets, Sanitary ware, and Wardrobes, including each of their location as shown in the plan is indicative and subject to revision by the Seller. All fixtures, fittings, goods, accessories, and furniture reflected/displayed in this plan(s) are strictly illustrative and representational (not actual) in nature and are only for the purpose of illustrating / reflecting one of the possible layouts which the Purchaser could arrange after the Unit is handed over and do not form part of the Unit. No furniture, goods, accessories are included in the sale, unless such items are specifically included in Schedule A of the SPA.



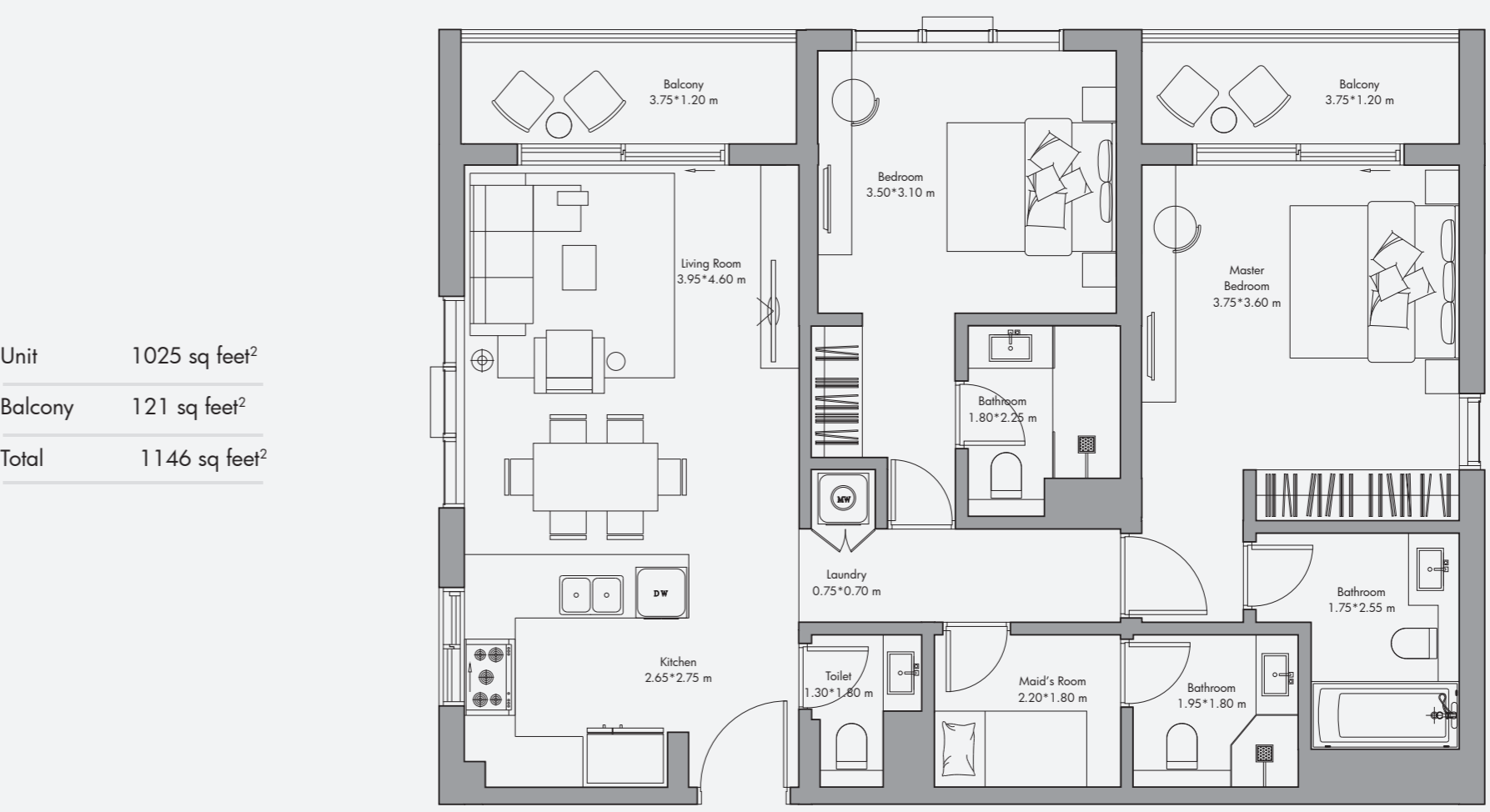
2 Bedroom Apartment Type 05 / 1140 sq feet²



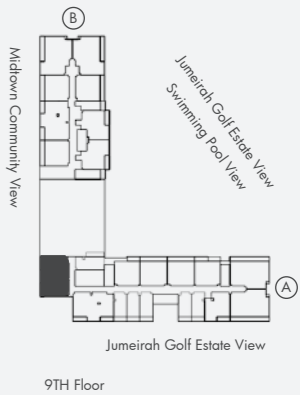
Disclaimer:
All the dimensions are in meters. The Unit shown is typical, and actual Unit may vary in dimensions, areas, layout, material specification, orientation, and location. Some of the Units may have a mirrored layout of the above plan. Unit Windows, Facade, Balcony door location, Fixtures, Kitchen Cabinets, Sanitary ware, and Wardrobes, including each of their location as shown in the plan is indicative and subject to revision by the Seller. All fixtures, fittings, goods, accessories, and furniture reflected/displayed in this plan(s) are strictly illustrative and representational (not actual) in nature and are only for the purpose of illustrating / reflecting one of the possible layouts which the Purchaser could arrange after the Unit is handed over and do not form part of the Unit. No furniture, goods, accessories are included in the sale, unless such items are specifically included in Schedule A of the SPA.



2 Bedroom Apartment Type 05* / 1146 sq feet²

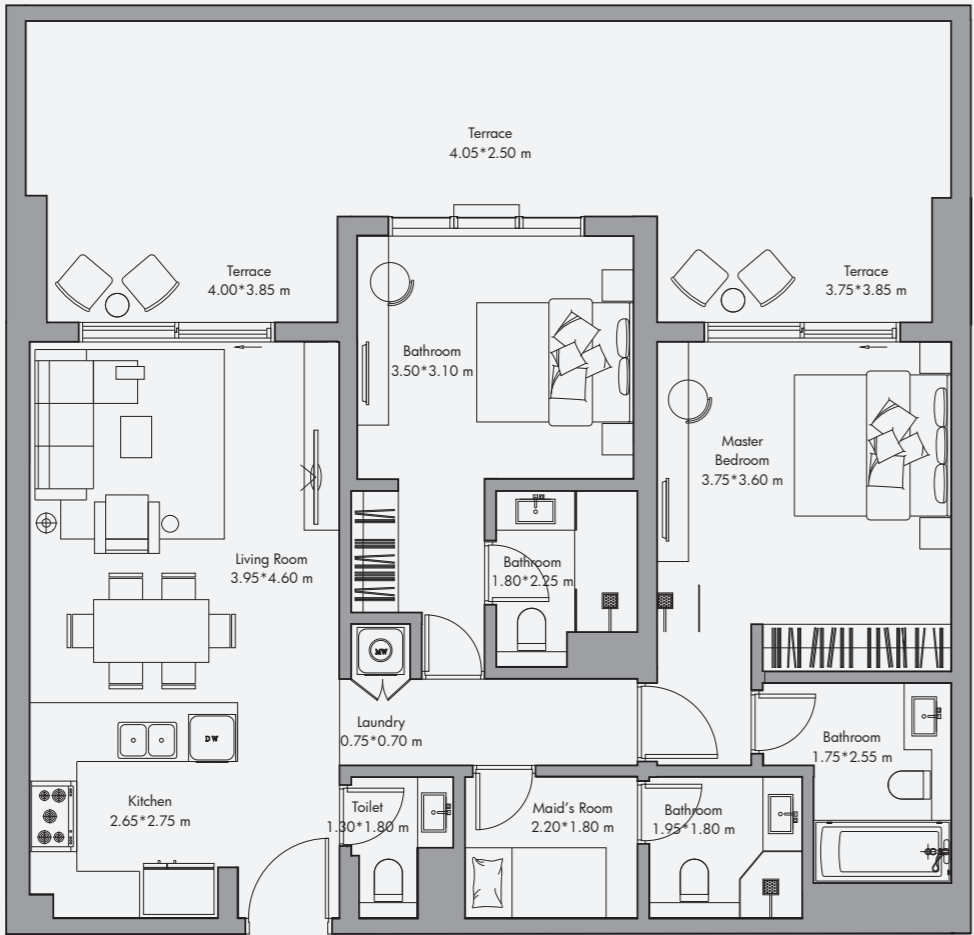


Disclaimer:
All the dimensions are in meters. The Unit shown is typical, and actual Unit may vary in dimensions, areas, layout, material specification, orientation, and location. Some of the Units may have a mirrored layout of the above plan. Unit Windows, Facade, Balcony door location, Fixtures, Kitchen Cabinets, Sanitary ware, and Wardrobes, including each of their location as shown in the plan is indicative and subject to revision by the Seller. All fixtures, fittings, goods, accessories, and furniture reflected/displayed in this plan(s) are strictly illustrative and representational (not actual) in nature and are only for the purpose of illustrating / reflecting one of the possible layouts which the Purchaser could arrange after the Unit is handed over and do not form part of the Unit. No furniture, goods, accessories are included in the sale, unless such items are specifically included in Schedule A of the SPA.

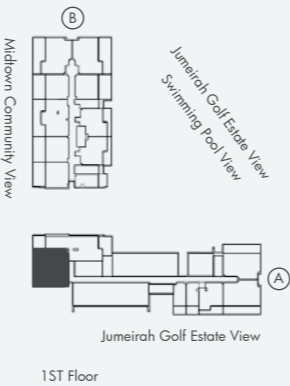


2 Bedroom Apartment Type 05-T / 1490 sq feet²

Unit	1020 sq feet ²
Terrace	470 sq feet ²
Total	1490 sq feet ²

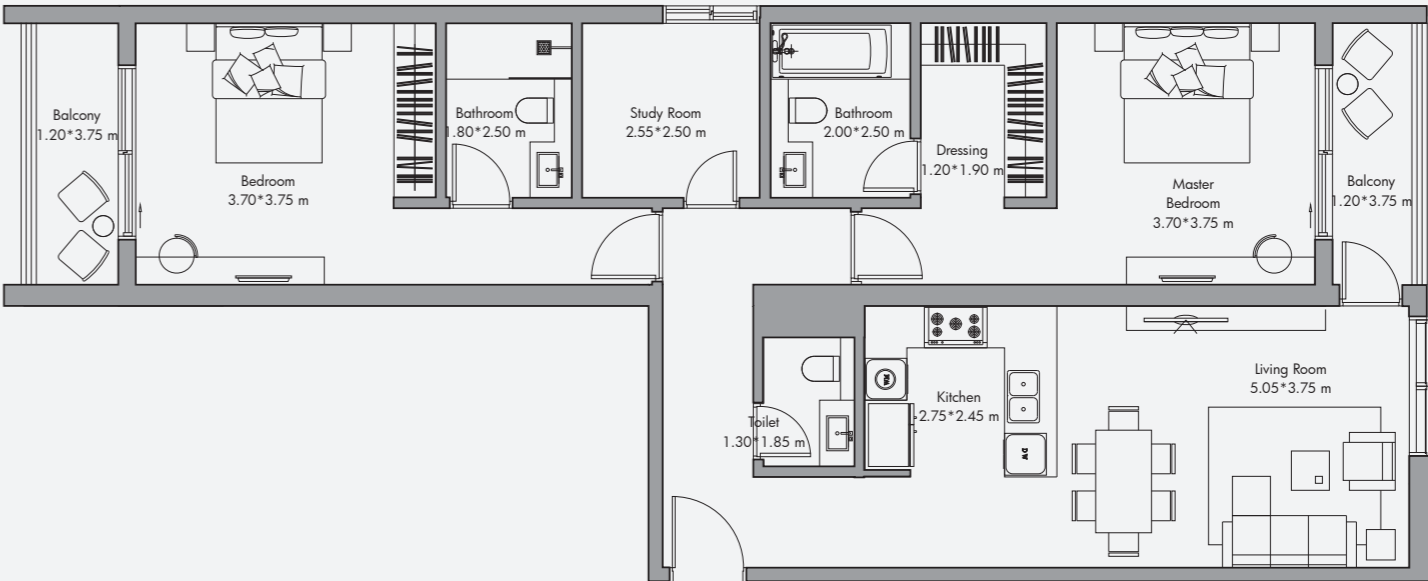


Disclaimer:
All the dimensions are in meters. The Unit shown is typical, and actual Unit may vary in dimensions, areas, layout, material specification, orientation, and location. Some of the Units may have a mirrored layout of the above plan. Unit Windows, Façade, Balcony door location, Fixtures, Kitchen Cabinets, Sanitary ware, and Wardrobes, including each of their location as shown in the plan is indicative and subject to revision by the Seller. All fixtures, fittings, goods, accessories, and furniture reflected/displayed in this plan(s) are strictly illustrative and representational (not actual) in nature and are only for the purpose of illustrating / reflecting one of the possible layouts which the Purchaser could arrange after the Unit is handed over and do not form part of the Unit. No furniture, goods, accessories are included in the sale, unless such items are specifically included in Schedule A of the SPA.

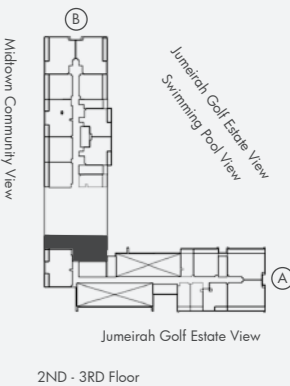


2 Bedroom Apartment Type 06 / 1365 sq feet²

Unit	1240 sq feet ²
Balcony	125 sq feet ²
Total	1365 sq feet ²

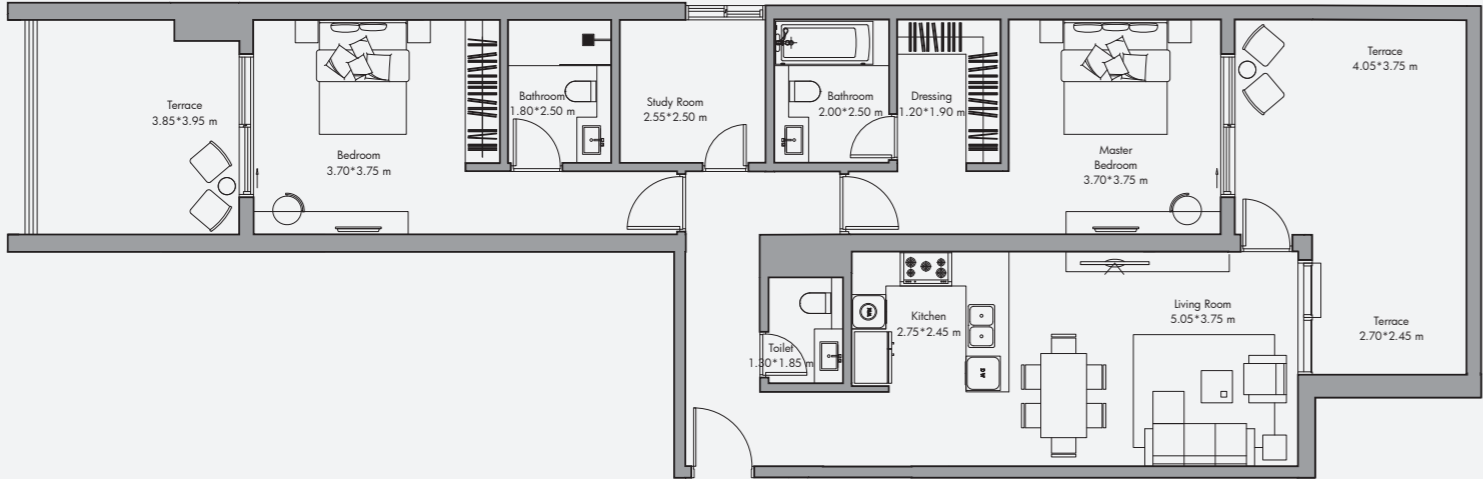


Disclaimer:
All the dimensions are in meters. The Unit shown is typical, and actual Unit may vary in dimensions, areas, layout, material specification, orientation, and location. Some of the Units may have a mirrored layout of the above plan. Unit Windows, Façade, Balcony door location, Fixtures, Kitchen Cabinets, Sanitary ware, and Wardrobes, including each of their location as shown in the plan is indicative and subject to revision by the Seller. All fixtures, fittings, goods, accessories, and furniture reflected/displayed in this plan(s) are strictly illustrative and representational (not actual) in nature and are only for the purpose of illustrating / reflecting one of the possible layouts which the Purchaser could arrange after the Unit is handed over and do not form part of the Unit. No furniture, goods, accessories are included in the sale, unless such items are specifically included in Schedule A of the SPA.

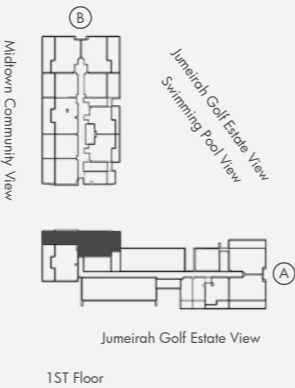


2 Bedroom Apartment Type 06-T / 1685 sq feet²

Unit	1235 sq feet ²
Terrace	450 sq feet ²
Total	1685 sq feet ²

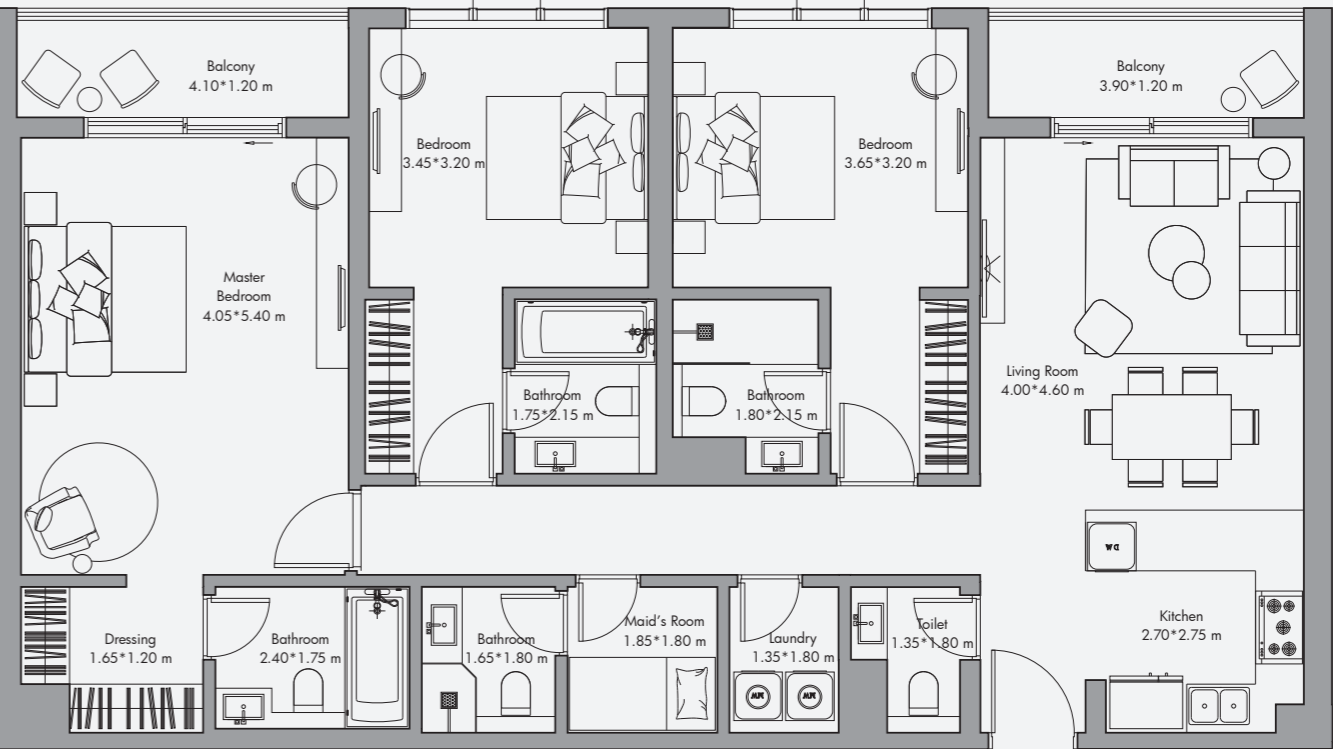


Disclaimer:
All the dimensions are in meters. The Unit shown is typical, and actual Unit may vary in dimensions, areas, layout, material specification, orientation, and location. Some of the Units may have a mirrored layout of the above plan. Unit Windows, Façade, Balcony door location, Fixtures, Kitchen Cabinets, Sanitary ware, and Wardrobes, including each of their location as shown in the plan is indicative and subject to revision by the Seller. All fixtures, fittings, goods, accessories, and furniture reflected/displayed in this plan(s) are strictly illustrative and representational (not actual) in nature and are only for the purpose of illustrating / reflecting one of the possible layouts which the Purchaser could arrange after the Unit is handed over and do not form part of the Unit. No furniture, goods, accessories are included in the sale, unless such items are specifically included in Schedule A of the SPA.

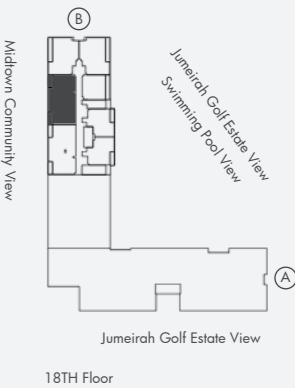


3 Bedroom Apartment Type 01 / 1550 sq feet²

Unit	1420 sq feet ²
Balcony	130 sq feet ²
Total	1550 sq feet ²

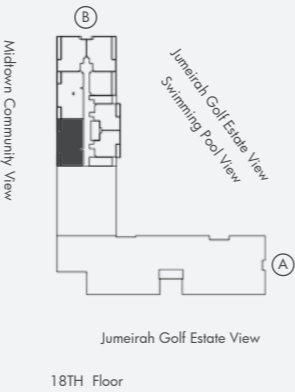
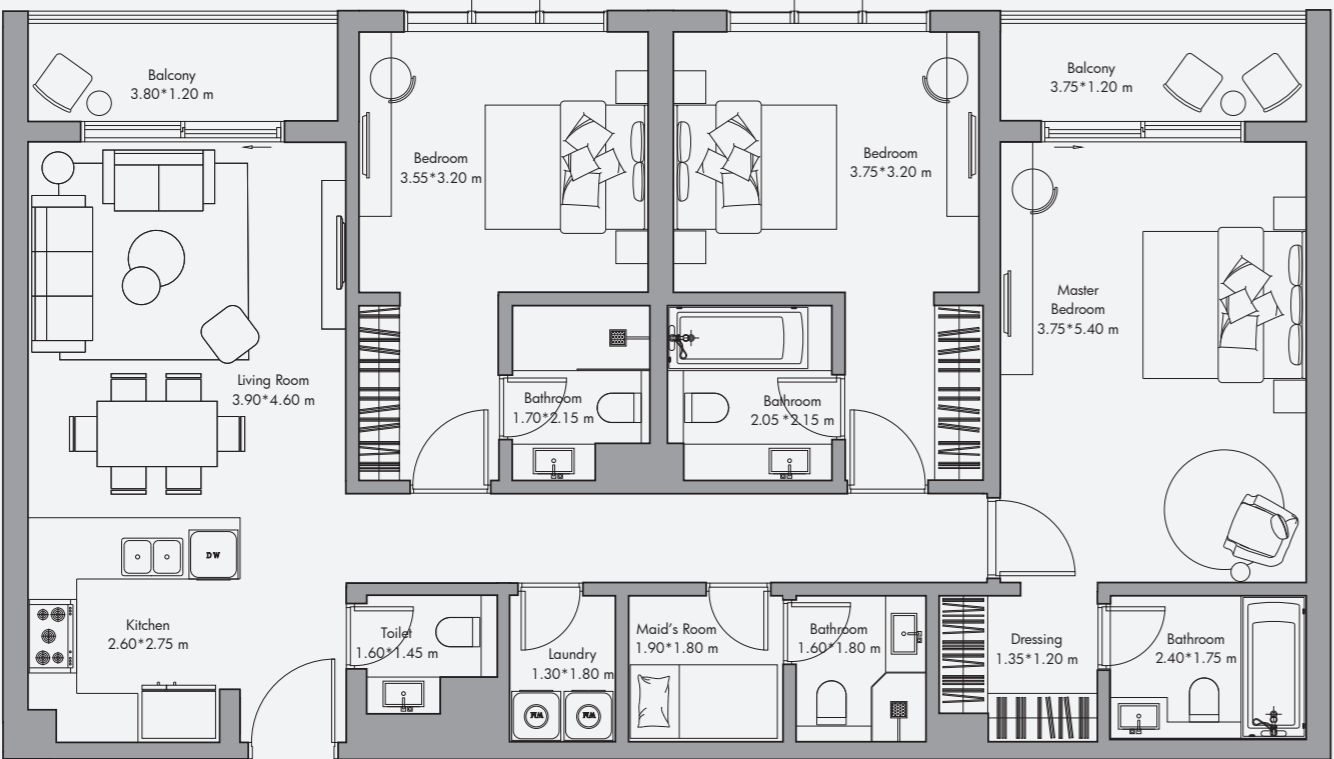


Disclaimer:
All the dimensions are in meters. The Unit shown is typical, and actual Unit may vary in dimensions, areas, layout, material specification, orientation, and location. Some of the Units may have a mirrored layout of the above plan. Unit Windows, Façade, Balcony door location, Fixtures, Kitchen Cabinets, Sanitary ware, and Wardrobes, including each of their location as shown in the plan is indicative and subject to revision by the Seller. All fixtures, fittings, goods, accessories, and furniture reflected/displayed in this plan(s) are strictly illustrative and representational (not actual) in nature and are only for the purpose of illustrating / reflecting one of the possible layouts which the Purchaser could arrange after the Unit is handed over and do not form part of the Unit. No furniture, goods, accessories are included in the sale, unless such items are specifically included in Schedule A of the SPA.



3 Bedroom Apartment Type 01 * / 1520 sq feet²

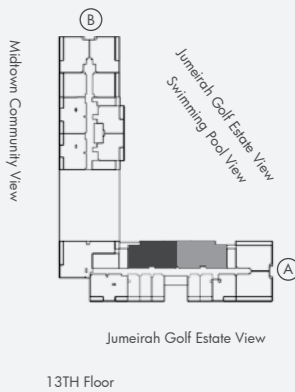
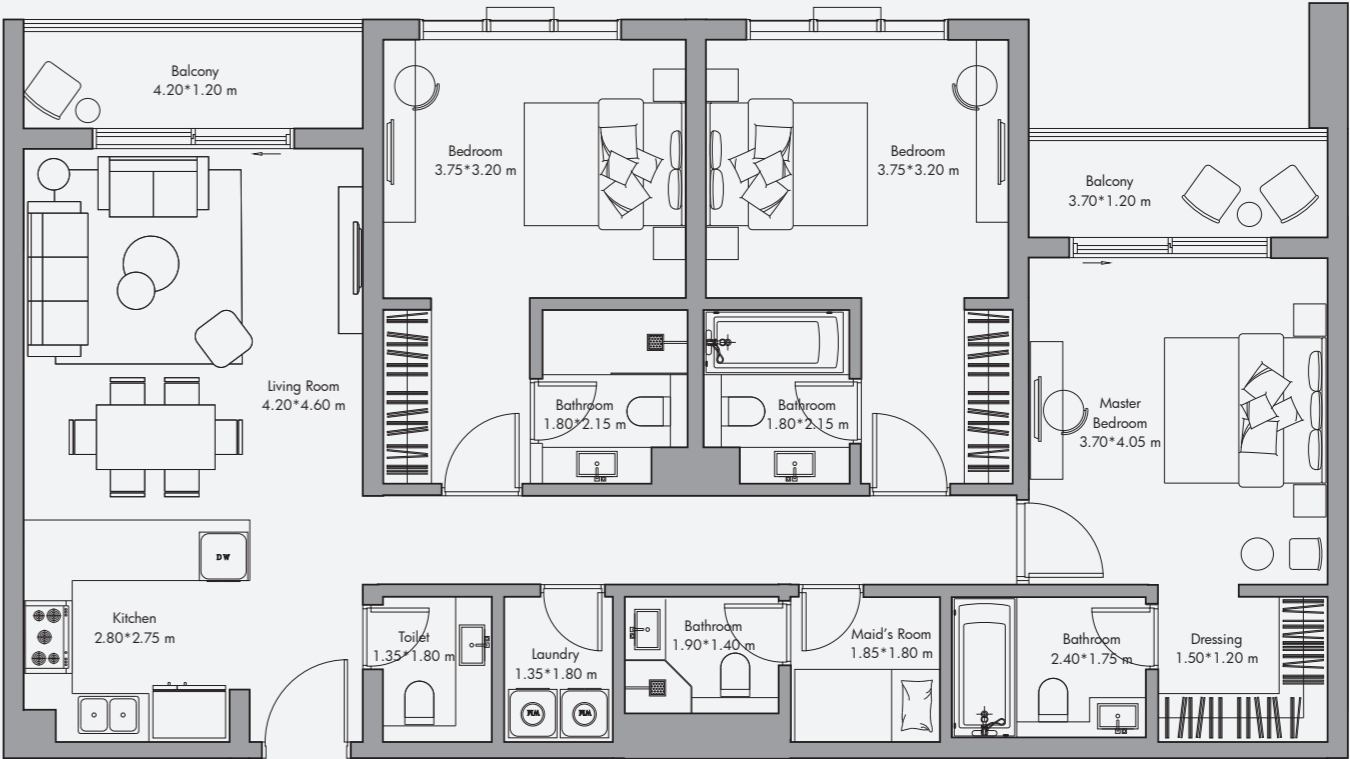
Unit	1400 sq feet ²
Balcony	120 sq feet ²
Total	1520 sq feet ²



Disclaimer:
All the dimensions are in meters. The Unit shown is typical, and actual Unit may vary in dimensions, areas, layout, material specification, orientation, and location. Some of the Units may have a mirrored layout of the above plan. Unit Windows, Façade, Balcony door location, Fixtures, Kitchen Cabinets, Sanitary ware, and Wardrobes, including each of their location as shown in the plan is indicative and subject to revision by the Seller. All fixtures, fittings, goods, accessories, and furniture reflected/displayed in this plan(s) are strictly illustrative and representational (not actual) in nature and are only for the purpose of illustrating / reflecting one of the possible layouts which the Purchaser could arrange after the Unit is handed over and do not form part of the Unit. No furniture, goods, accessories are included in the sale, unless such items are specifically included in Schedule A of the SPA.

3 Bedroom Apartment Type 02 / 1515 Sq feet²

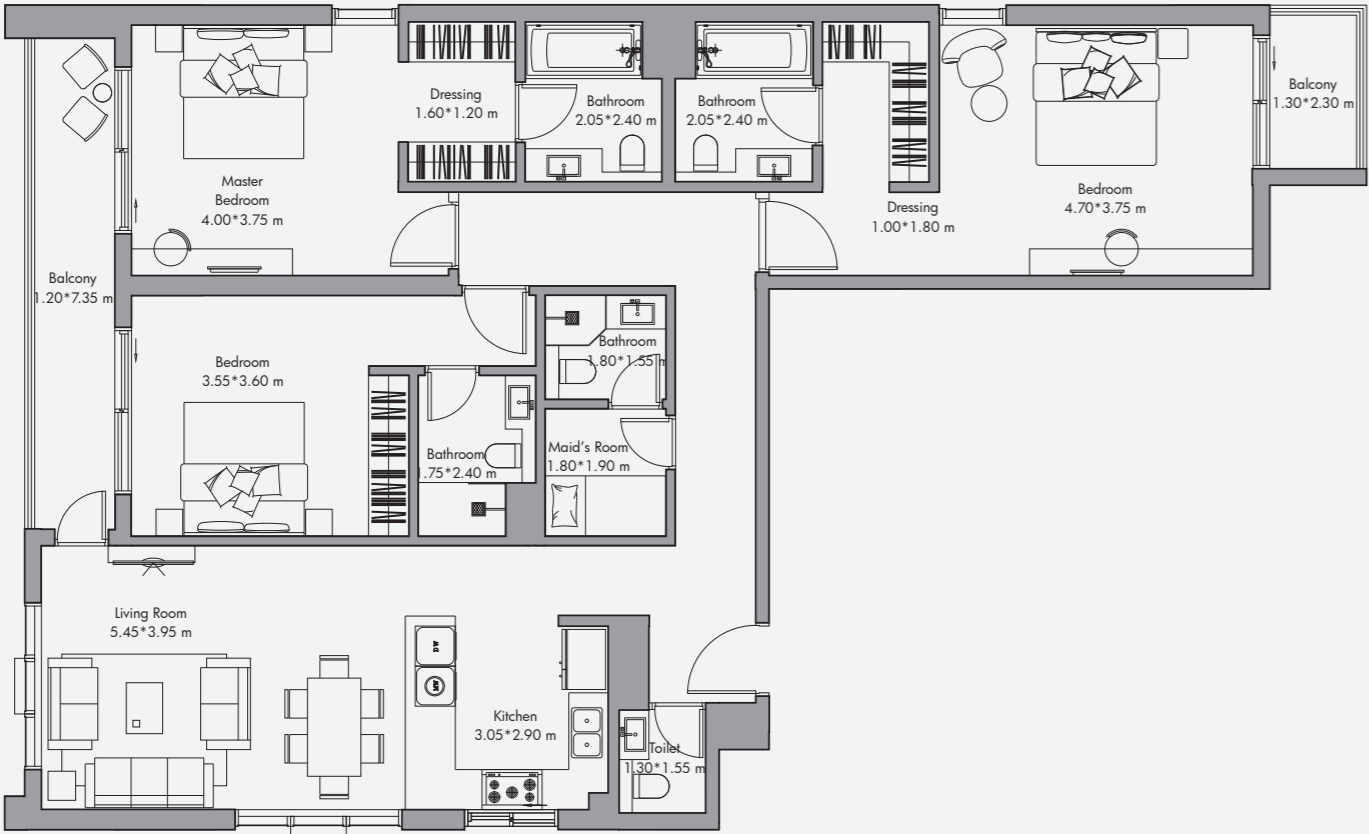
Unit	1390 Sq Feet ²
Balcony	125 Sq Feet ²
Total	1515 Sq Feet ²



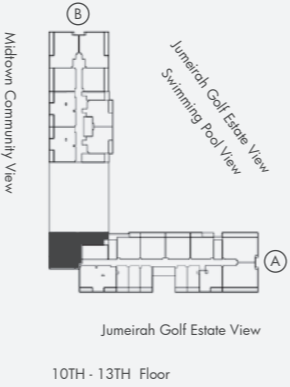
Disclaimer:
All the dimensions are in meters. The Unit shown is typical, and actual Unit may vary in dimensions, areas, layout, material specification, orientation, and location. Some of the Units may have a mirrored layout of the above plan. Unit Windows, Façade, Balcony door location, Fixtures, Kitchen Cabinets, Sanitary ware, and Wardrobes, including each of their location as shown in the plan is indicative and subject to revision by the Seller. All fixtures, fittings, goods, accessories, and furniture reflected/displayed in this plan(s) are strictly illustrative and representational (not actual) in nature and are only for the purpose of illustrating / reflecting one of the possible layouts which the Purchaser could arrange after the Unit is handed over and do not form part of the Unit. No furniture, goods, accessories are included in the sale, unless such items are specifically included in Schedule A of the SPA.

3 Bedroom Apartment Type 03 / 1760 sq feet²

Unit	1605 sq feet ²
Balcony	155 sq feet ²
Total	1760 sq feet ²



Disclaimer:
All the dimensions are in meters. The Unit shown is typical, and actual Unit may vary in dimensions, areas, layout, material specification, orientation, and location. Some of the Units may have a mirrored layout of the above plan. Unit Windows, Façade, Balcony door location, Fixtures, Kitchen Cabinets, Sanitary ware, and Wardrobes, including each of their location as shown in the plan is indicative and subject to revision by the Seller. All fixtures, fittings, goods, accessories, and furniture reflected/displayed in this plan(s) are strictly illustrative and representational (not actual) in nature and are only for the purpose of illustrating / reflecting one of the possible layouts which the Purchaser could arrange after the Unit is handed over and do not form part of the Unit. No furniture, goods, accessories are included in the sale, unless such items are specifically included in Schedule A of the SPA.





نبذة عن ديار

ABOUT DEYAAR.

تأسست شركة ديار للتطوير ش. م. ع. عام ٢٠٠٢، كواحدة من أكبر شركات التطوير العقاري في دبي. تقدم "ديار" مجموعة متكاملة من الخدمات ضمن ستة أقسام وهي التطوير العقاري، وإدارة العقارات، وإدارة المرافق، وإدارة المجمعات، والضيافة، وإدارة الأصول. ويمتد حضورنا من وسط المدينة في منطقة الخليج التجاري إلى أشهر المجمعات السكنية في مختلف مناطق دبي. لذلك من الطبيعي أن تضم قائمة مشاريعنا مجموعة كبيرة من الأبراج المرموقة التي تتميز بطرازها العمراني. ولطالما انسجمت جهودنا وأهدافنا وتناغمت بشكل تام مع رؤية دبي ومساعدتها الطموحة للوصول إلى مستقبل مزدهر.

Established in 2002, Deyaar Development PJSC is one of the largest property developers in Dubai. Our integrated service offerings are provided under six distinct business units: Property Development, Property Management, Facilities Management, Community Management, Hospitality and Asset Management. From the affluent addresses in Downtown to the city's celebrated community areas, suburbs, and districts – we have spearheaded many modern developments. Our efforts and goals have always been to carefully align with the greater vision of Dubai and its future.

الشغف والطموح اللذان يميّزان دبي قد ساهما في تغيّير ملامحها في خلال أقل من خمسين عاماً. واليوم، تُعد دبي محوراً عالمياً للأعمال التجارية والوجهة العالمية الرائدة للشركات الناشئة، والفضل في ذلك يعود إلى موقعها الجغرافي الاستراتيجي الذي يقع على مقربة من الأسواق العالمية الرئيسية. وكنتيجة لهذا، أصبح الاستثمار في دبي هو الخيار الأمثل للكثيرين.

Unmatched passion and ambition have transformed Dubai in less than fifty years. With its strategic geographic advantage of being positioned close to key markets around the world, Dubai has become a global business hub and the preeminent international location for fast-growing businesses. Attracting talents from all over the globe. As a result, investing in Dubai makes perfect business sense.

Higher rental income on average of 7.4%, which is one of the highest in the world*.

Strategically located with 1/3 of the world's population living within 4 hours flight time from Dubai, 2/3 of the world's population living within 8 Hours flight time from Dubai**.

100% foreign ownership; repatriation of capital and profits

Golden Visa

Safe and secure environment

Stable currency pegged to USD

Zero Income Tax

عائد إيجاري أعلى بمتوسط ٧.٤٪، وهو أحد أعلى العوائد في العالم

تتمتع بموقع جغرافي استراتيجي يتيح إلى ثلث سكان العالم الوصول إليها بكل سهولة في خلال زمن طيران لا يتجاوز ٤ ساعات من دبي، وإلى ثلثي سكان العالم في خلال زمن طيران لا يتجاوز ٨ ساعات من دبي

تملك أجنبي بنسبة ١٠٠٪، تحويل رأس المال والأرباح

إقامة ذهبية

بيئة آمنة ومستقرة

عملة مستقرة مرتبطة بالدولار الأمريكي

إعفاء من ضريبة الدخل

لماذا دبي

WHY Dubai