

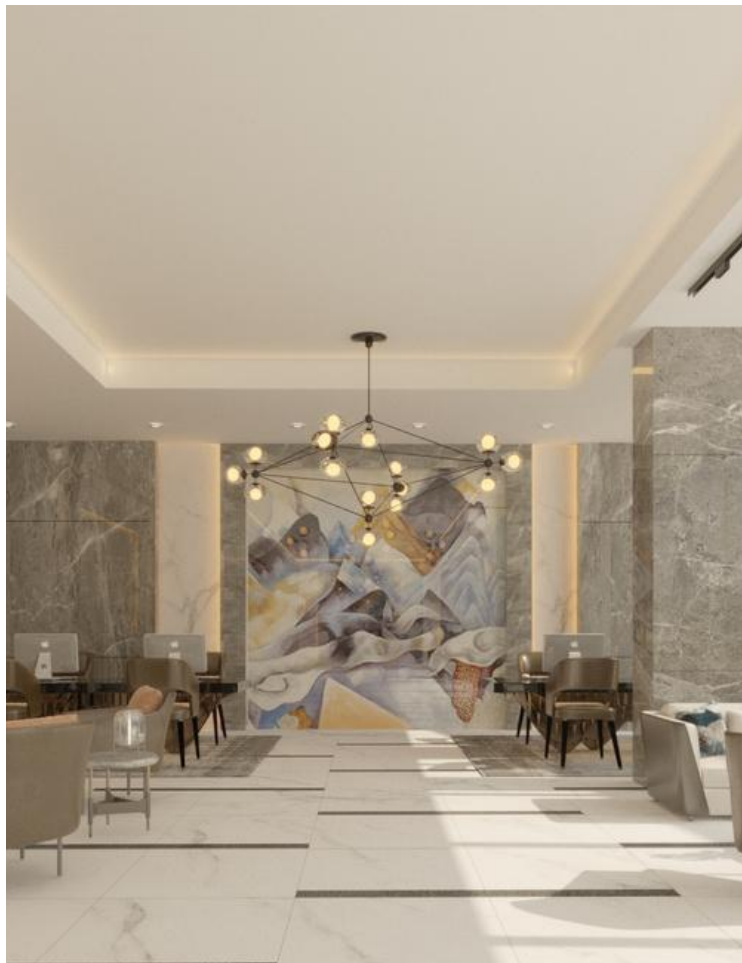


VIOLET TOWER

فيوليت تاور

THE PROJECT

Violet Tower is a residential tower located in the heart of Jumeirah Village Circle (JVC). With 27 residential floors and a variety of high-quality amenities, Violet Tower epitomizes the marriage of elegance and practical living.







THE RECEPTION



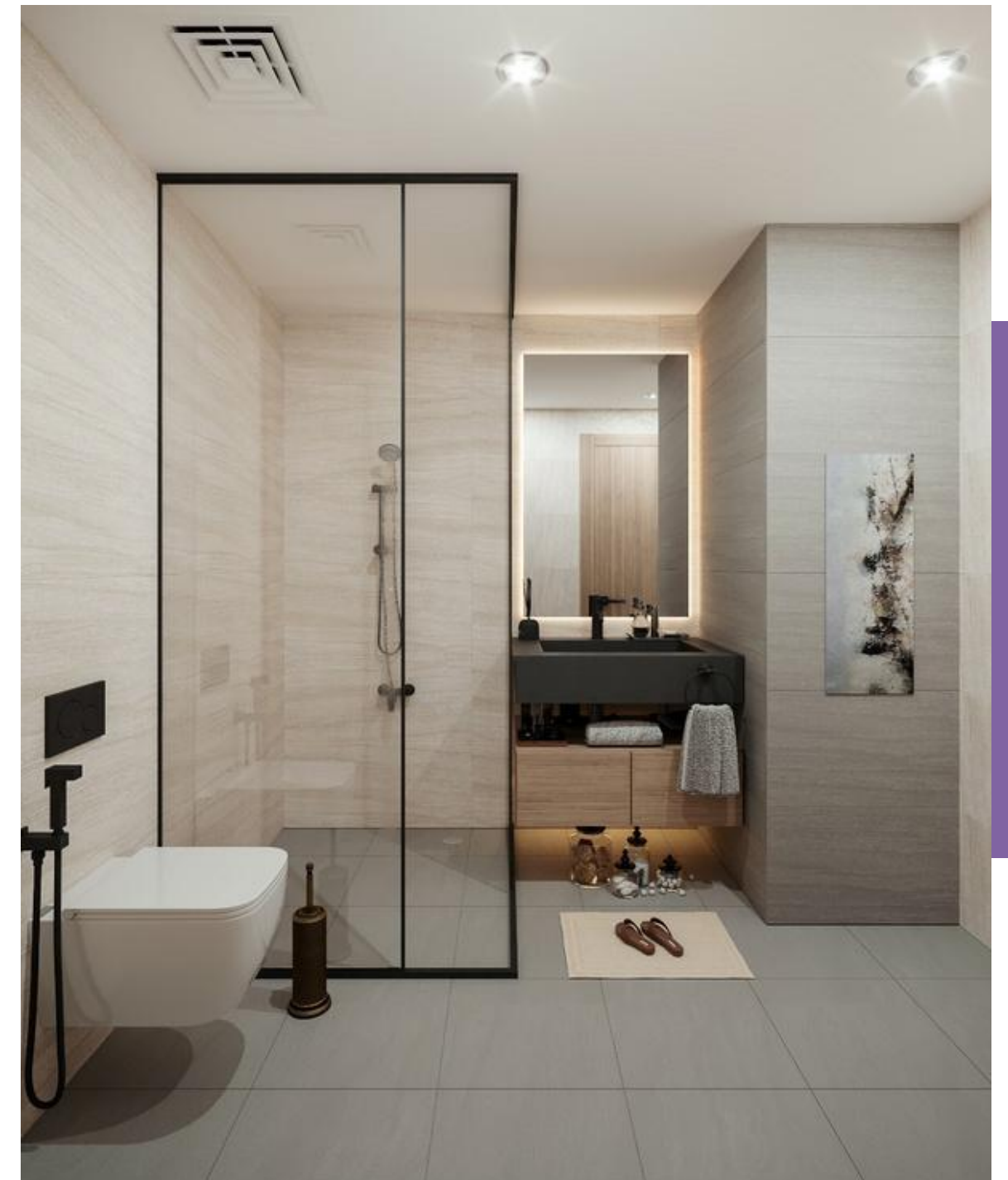
THE STUDIOS



ONE BEDROOM



TWO BEDROOM



LOCATION

Violet Tower's convenient location at the heart of JVC puts it just a few minutes away from key amenities and landmarks in the city. Residents have easy access to a number of Dubai's main connecting highways and streets.



7 minutes
Dubai Hills Mall



10 minutes
Mall of the Emirates



10 minutes
Dubai Marina



20 minutes
Jumeirah Beach



15 minutes
Downtown Dubai



15 minutes
Burj Al Arab



20 minutes
Palm Jumeirah



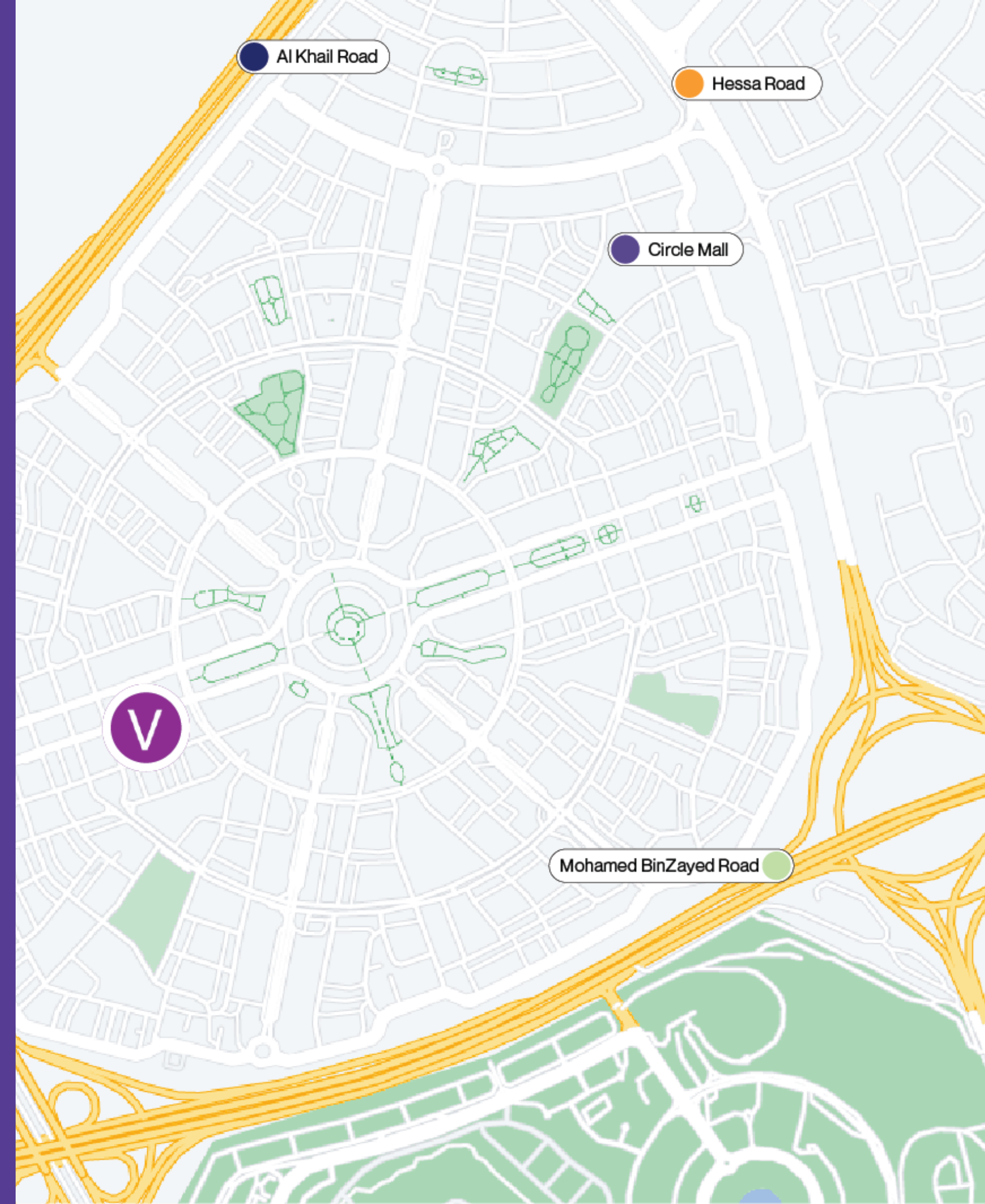
20 minutes
Museum of the Future



30 minutes
Dubai International Airport



30 minutes
Dubai World Trade Center





STUDIO



ONE-BEDROOM



TWO-BEDROOM

TYPOLOGY

Total number of Floors – G + 4P + 27

Unit Type	Number of Units	From	To
Studio	84	365.43 Sq.ft	460.16 Sq.ft
One Bedroom	163	768.44 Sq.ft	827.96 Sq.ft
Two Bedroom	40	1217.08 Sq.ft	1245.92 Sq.ft

PRICES



Unit Price

Type	From	To
Studio	AED 529,880.40	AED 667,227.90
One Bedroom	AED 998,966.23	AED 1,159,143.98
Two Bedroom	AED 1,582,197.95	AED 1,681,995.55

Price Per SQFT

Type	From	To
Studio	AED 1,450.00	AED 1,550.00
One Bedroom	AED 1,300.00	AED 1,400.00
Two Bedroom	AED 1,300.00	AED 1,350.00

PAYMENT PLAN

Installments	Percentage	Payment Milestone	Breakdown
Deposit	20	Immediate	20% Immediate
1st	5	Issuance of building permit (Within 90 days of SALES DATE)	40% During Construction
2nd	5	At 30% Project completion (Within 180 days OF SALES DATE)	
3rd	5	At 50% Project completion (Within 360 days OF SALES DATE)	
4th	5	At 60% Project completion (Within 540 days OF SALES DATE)	
5th	20	At Completion (Within 720 days OF SALES DATE)	
6th	5	Within 90 days Of Handover Date	40% Post Handover
7th	5	Within 180 days Of Handover Date	
8th	5	Within 270 days Of Handover Date	
9th	5	Within 360 days Of Handover Date	
10th	5	Within 450 days Of Handover Date	
11th	5	Within 540 days Of Handover Date	
12th	5	Within 630 days Of Handover Date	
13th	5	Within 720 days Of Handover Date	

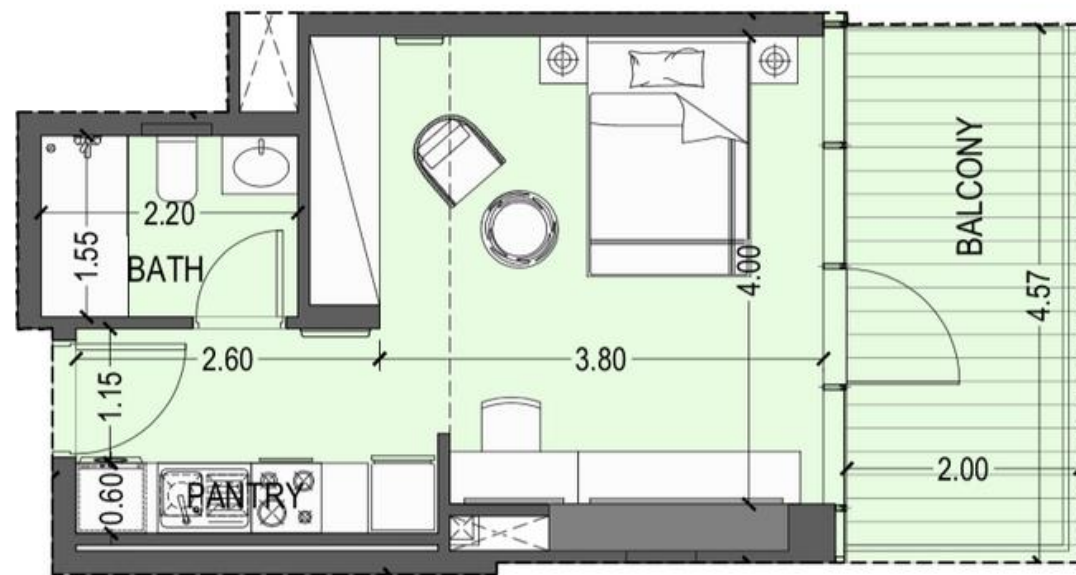
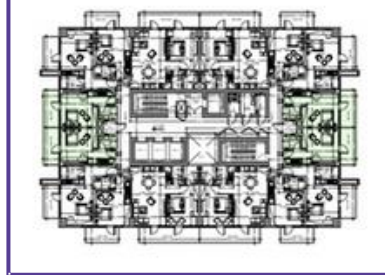


FLOOR PLANS

STUDIOS

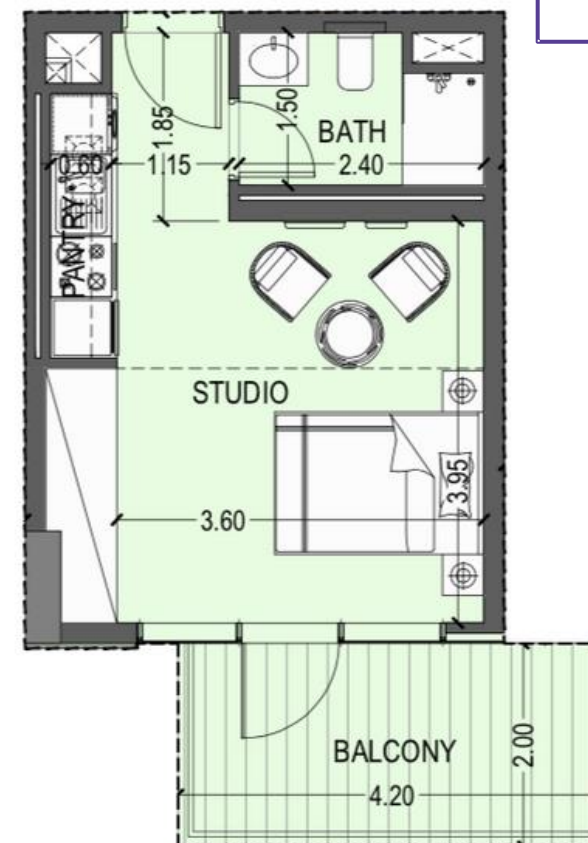
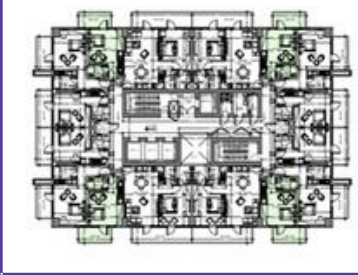
TYPE A

2nd to 8th floor | 28 flats



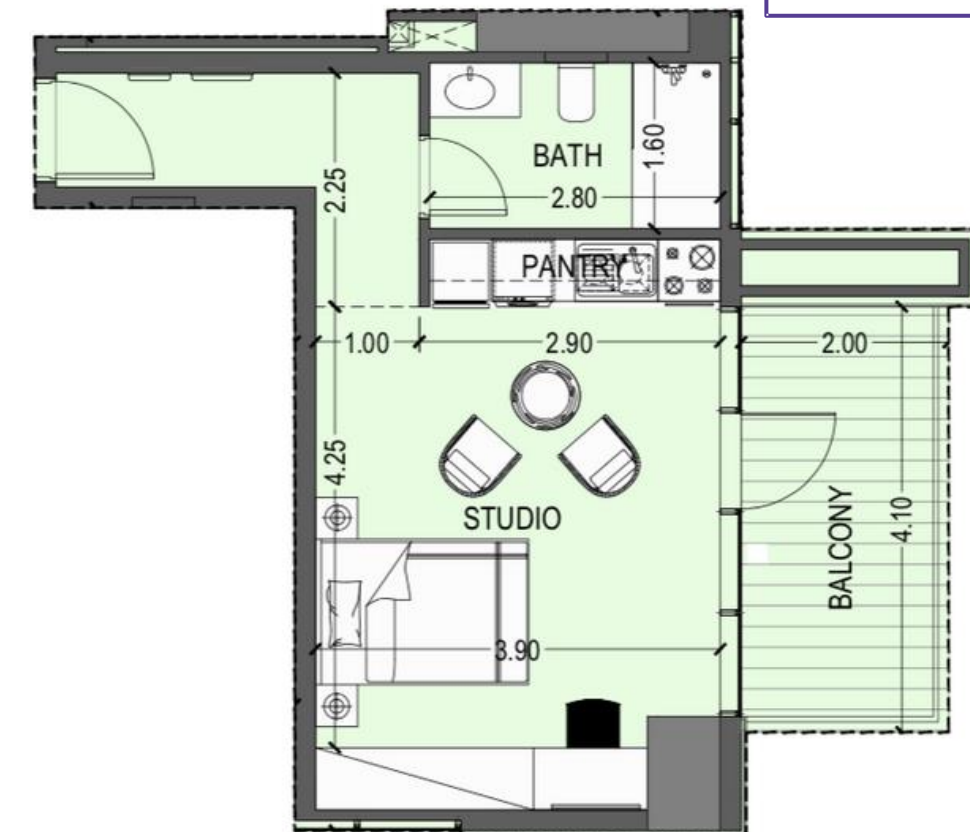
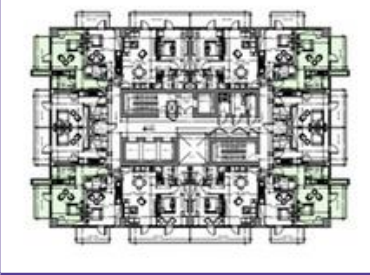
TYPE B

2nd to 8th floor | 28 flats



TYPE C

2nd to 8th floor | 28 flats



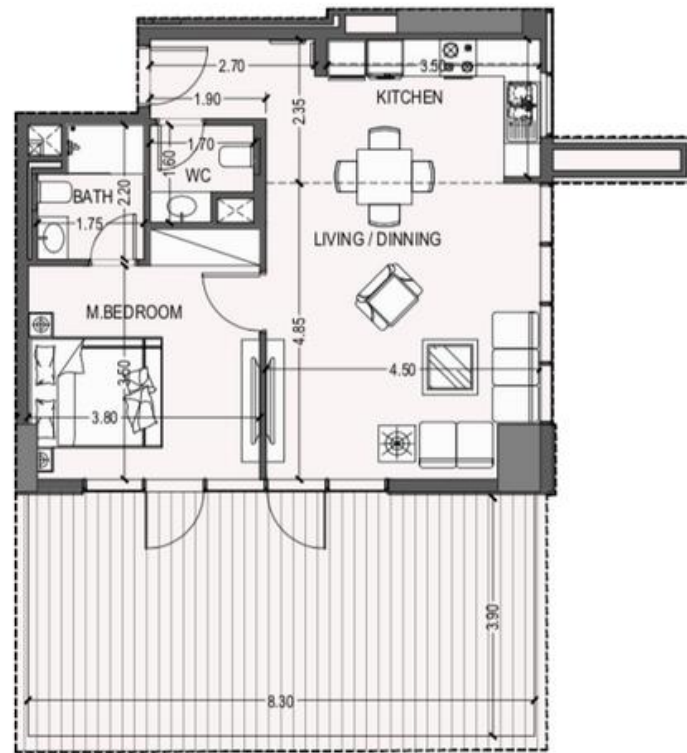
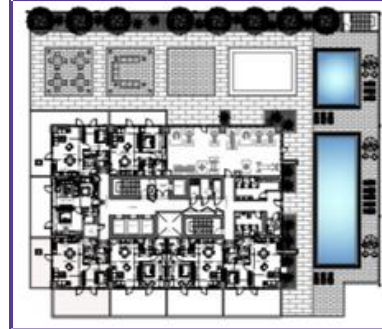


FLOOR PLANS

ONE-BEDROOM

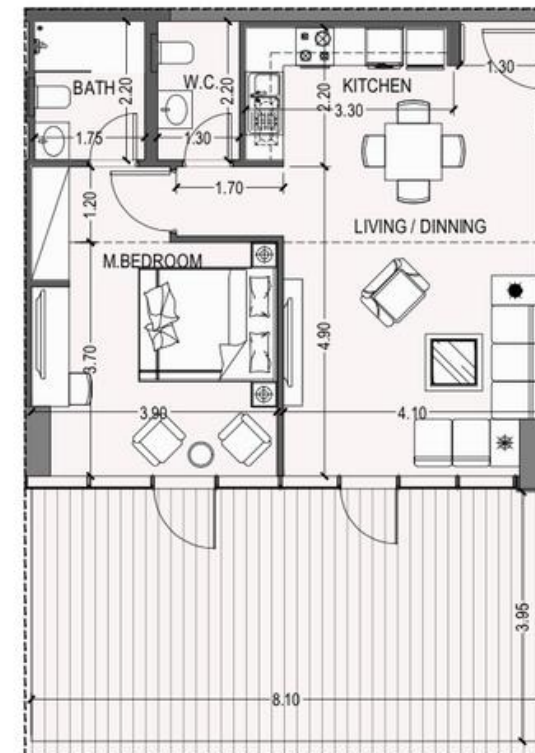
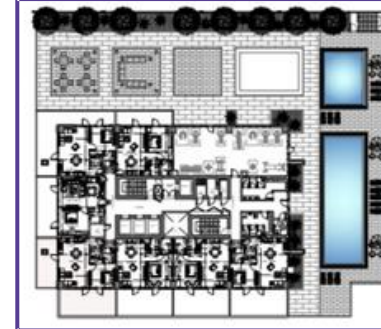
TYPE A

First floor | 1 flat



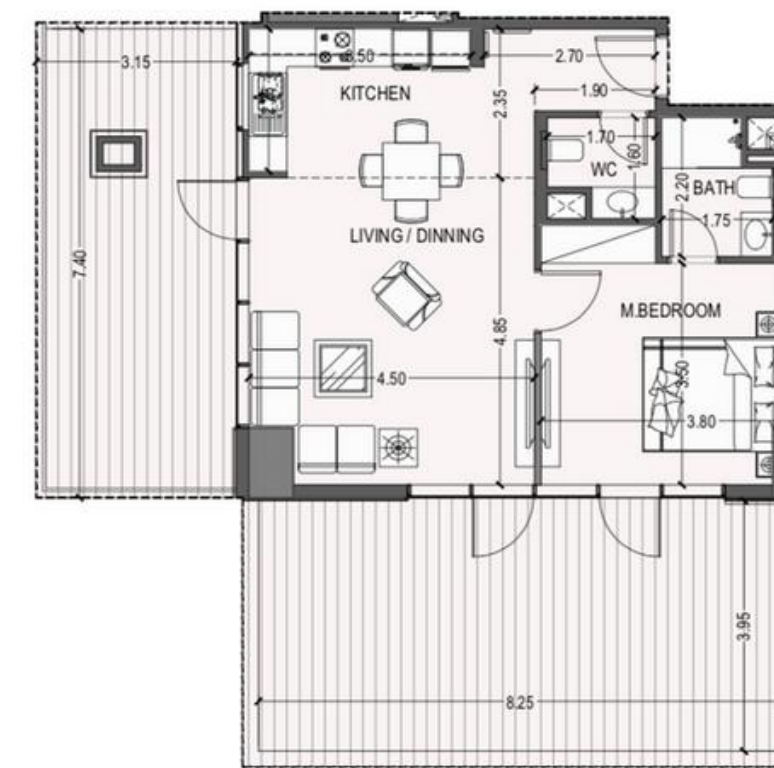
TYPE B

First floor | 1 flat



TYPE C

First floor | 1 flat



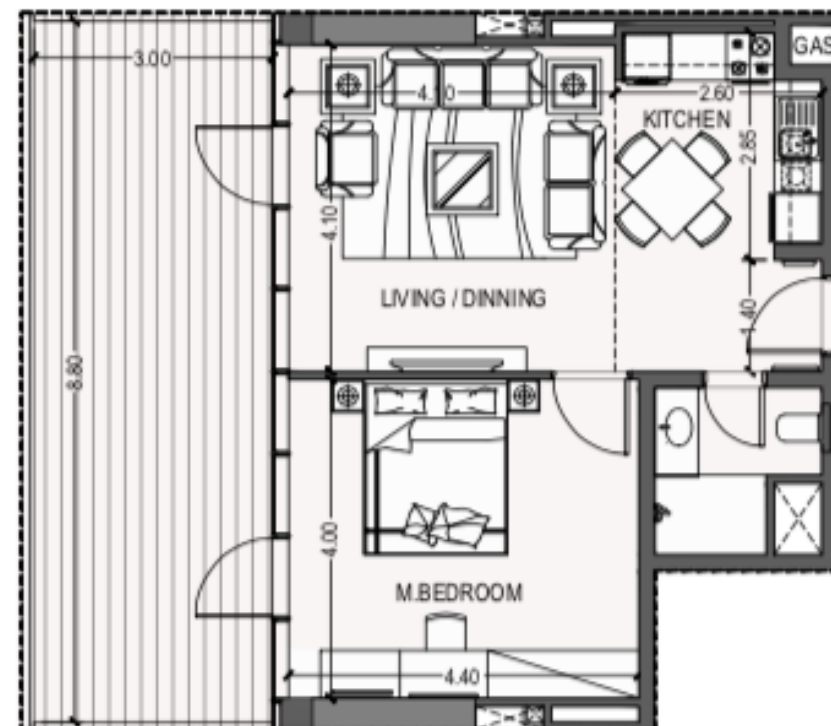
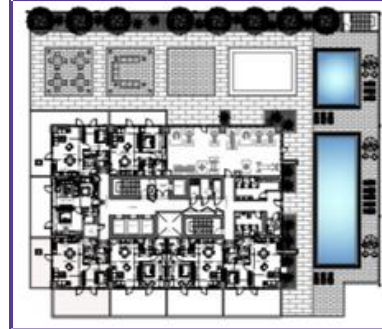


FLOOR PLANS

ONE-BEDROOM

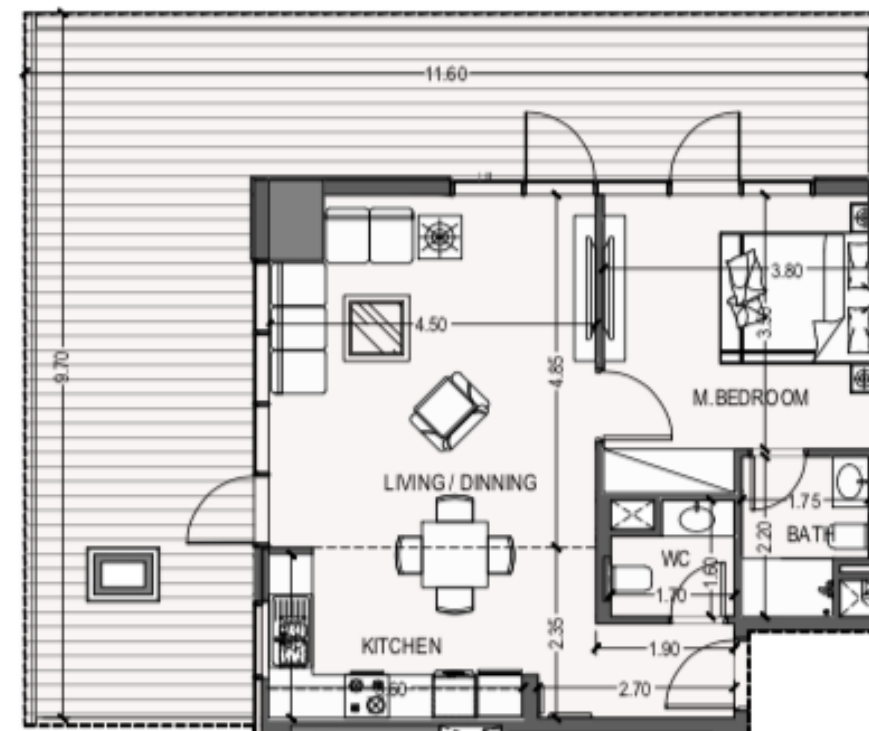
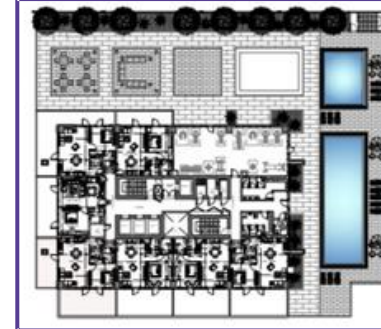
TYPE D

First floor | 1 flat



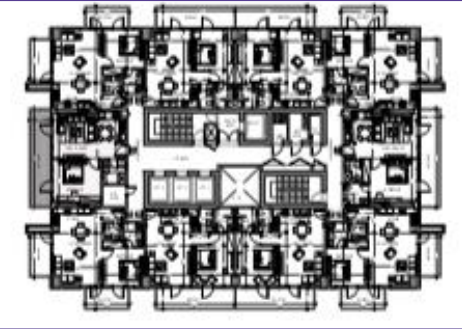
TYPE E

First floor | 1 flat



TYPE F

9th to 17th floor | 10 flats



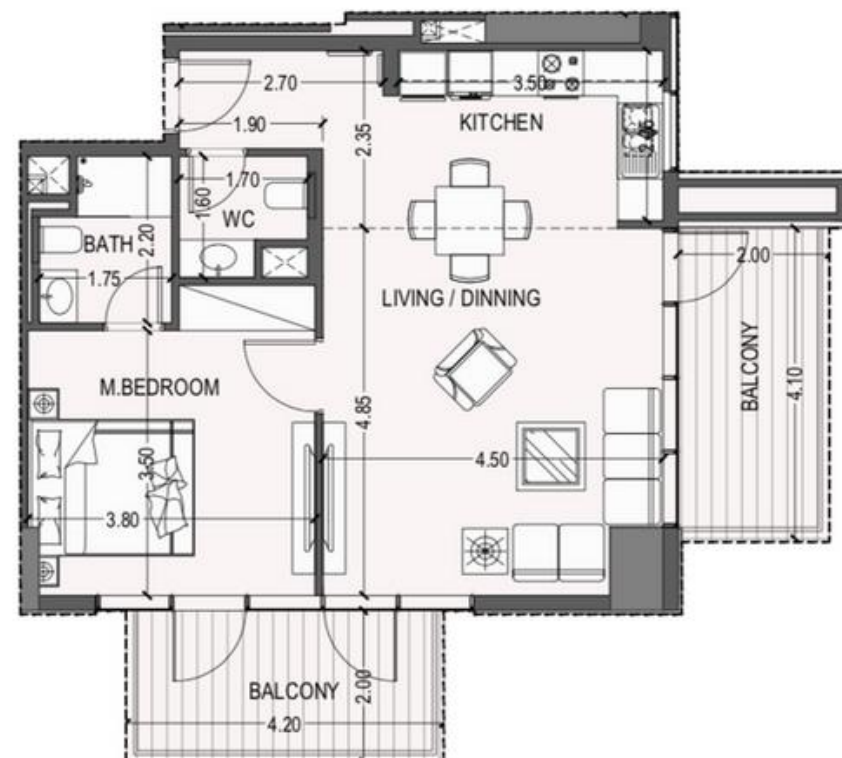
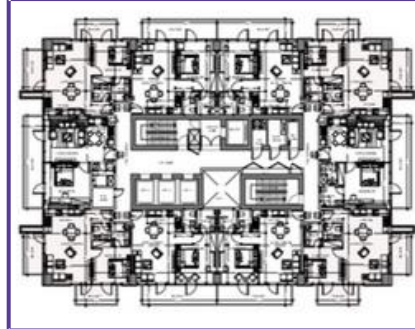


FLOOR PLANS

ONE-BEDROOM

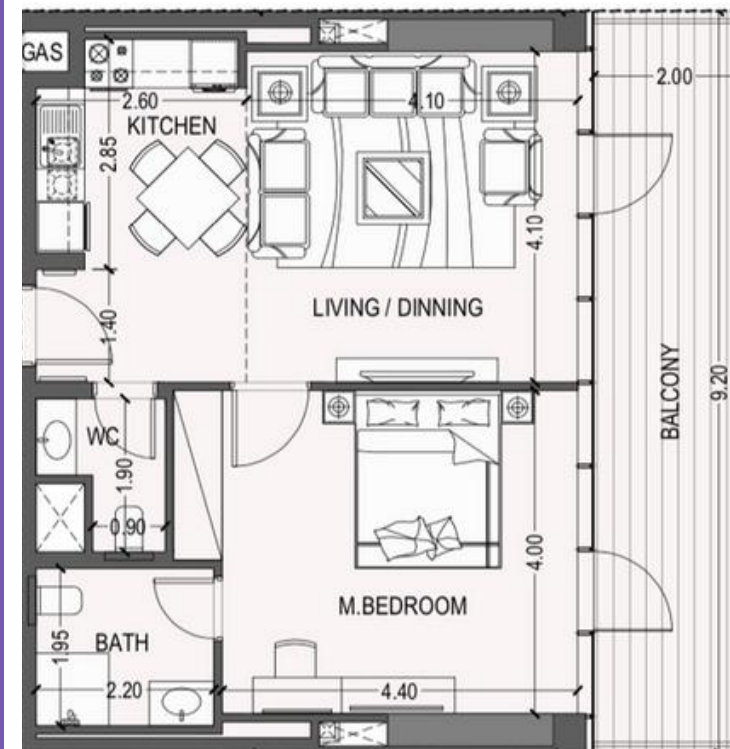
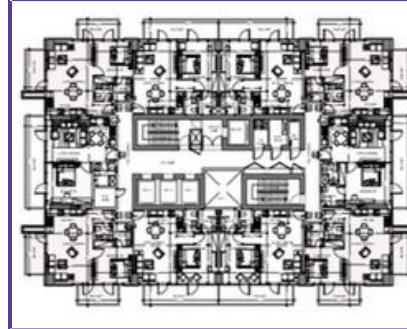
TYPE G

9th to 19th floor | 36 flats



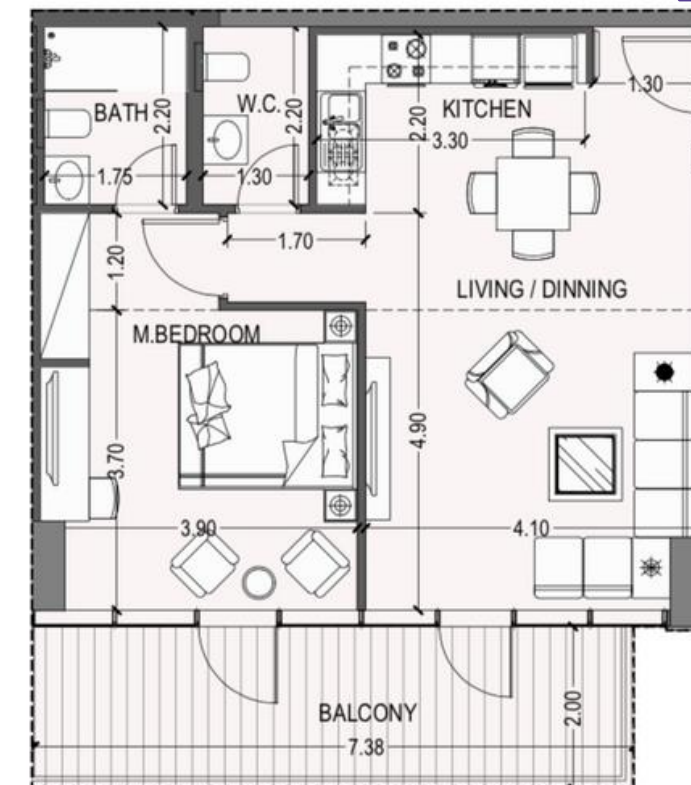
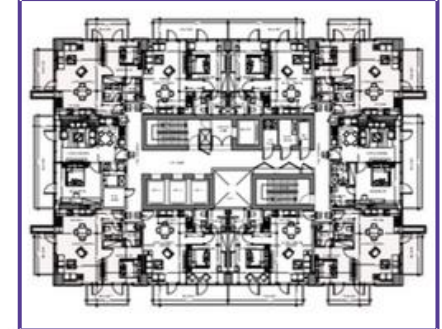
TYPE H

9th to 16th floor | 8 flats



TYPE J

2nd to 27th floor | 102 flats



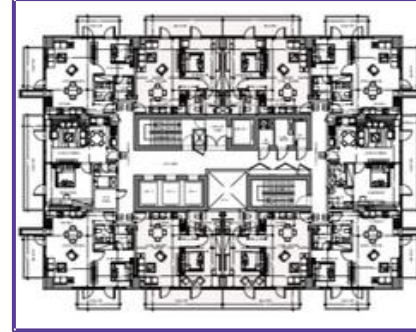
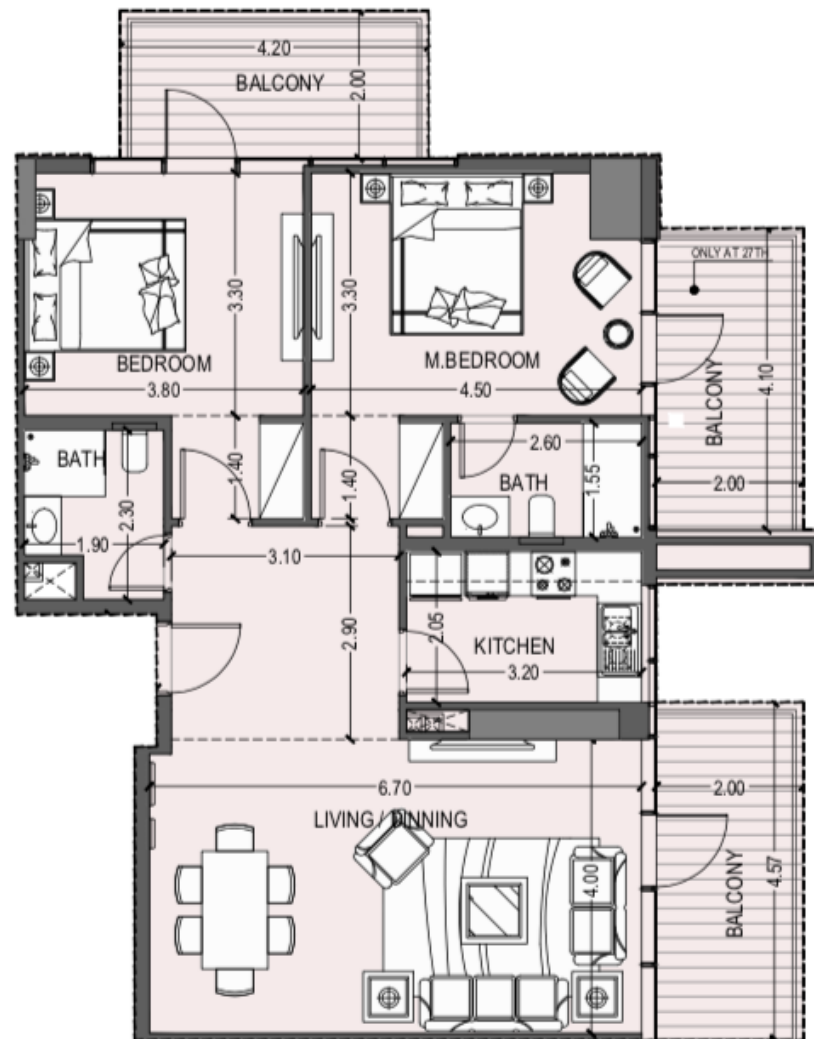


FLOOR PLANS

TWO-BEDROOM

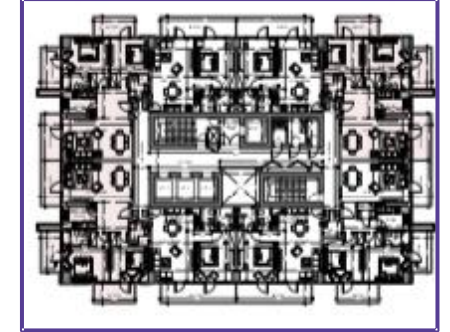
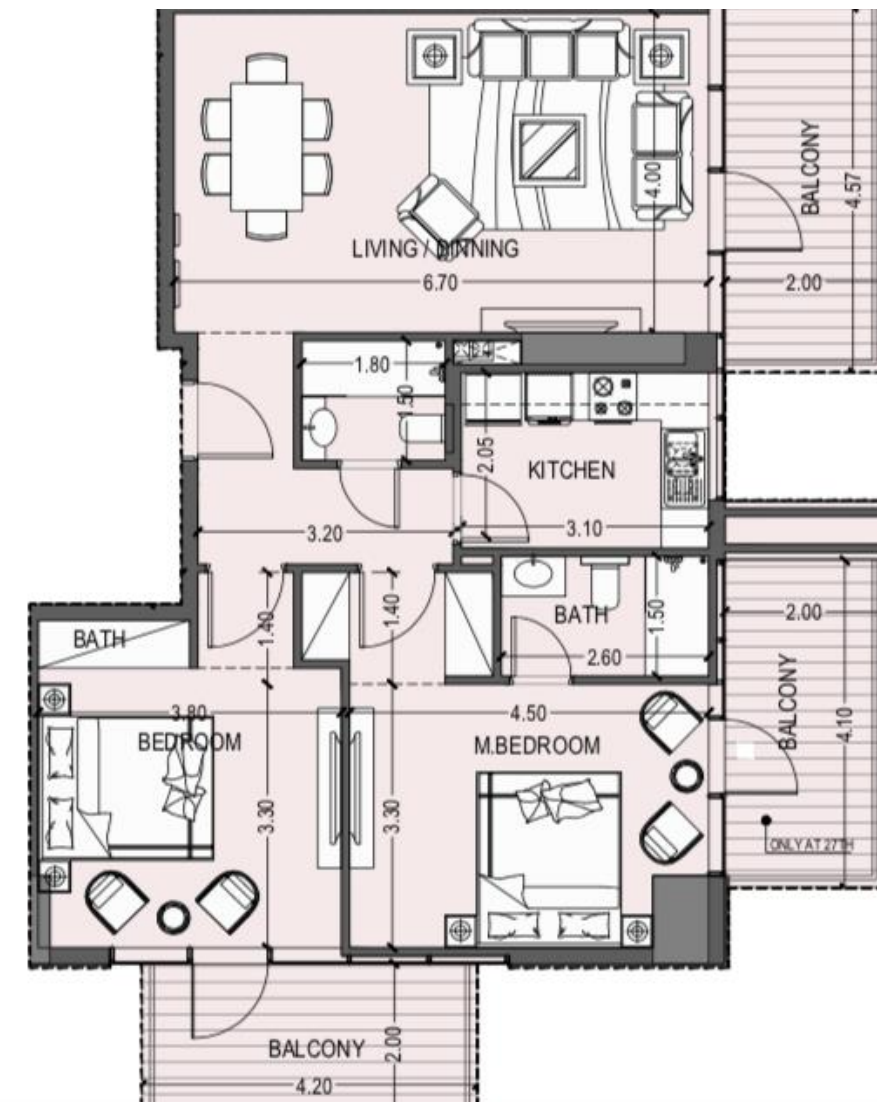
TYPE A

2nd to 27th floor | 30 flats



TYPE B

2nd to 27th floors | 10 flats





ARCHITECTURAL DESIGNS

Violet Tower stands out with its modern architecture, sleek design and fine finishing.

Exterior

The exterior features expansive windows, providing abundant natural light and panoramic views of the vibrant surroundings.

Outdoor Spaces

Balconies and communal areas contribute to the aesthetic appeal, offering residents a harmonious blend of urban living and natural beauty.

Interiors

The stylish streak flows seamlessly into the building's interior, with space unique and welcoming in its own right



AMENITIES



GYMNASIUM

A modern gym facility with the latest workout equipment



OUTDOOR POOL

An inviting pool to cool down and refresh



POOLSIDE LOUNGE

A place to relax, unwind, and enjoy



KIDS' PLAY AREA

A safe and vibrant playing area for kids to enjoy their time



ESCROW : 490555920027 | Developer ID: 278 | RERA ID: 2824 | Transaction Number: 88108

Contact Us on the Toll-Free Number: 800 Violet | 846538

Landline: +971 4 812 2800

www.violettower.com