

Riviera

CHALET

LIVE IN STYLE





DUBAI

A visionary metropolis, showcases futuristic architecture, advanced technologies, sustainable initiatives, and innovative infrastructure that makes it a modern marvel.

Riviera

CHALET





BUILDING

LIVE IN : CHARACTER



DISCOVER CHARACTER

Designed to reinvigorate the mind with comfort and convenience, the chalet-inspired structure with slopes and gradients seamlessly utilizes the right spaces to curate its own character for effortless living in Dubai.



DESIGNED TO STIMULATE COMFORT

The lobby exemplifies the mood and tone of the chalet design, taking inspiration from its nuances to create a perfect balance between comfort and modernity.



Riviera
CHALET

AMENITIES

LIVE IN : CHARISMA



DISCOVER CHARISMA

Relax and unwind in the Riviera Retreat as you bask in the serenity of our purpose-built pools, which include a children's pool for something for the young ones to look forward to.





GET A HEALTH BOOST

The gym features modern machines that work every muscle, allowing you to move in a comfortable environment, enabling you to overcome stress, and helping create that strong sense of unity and fusion with your mind and body.







FEATURES

LIVE IN : CHARM



DISCOVER AUTOMATION

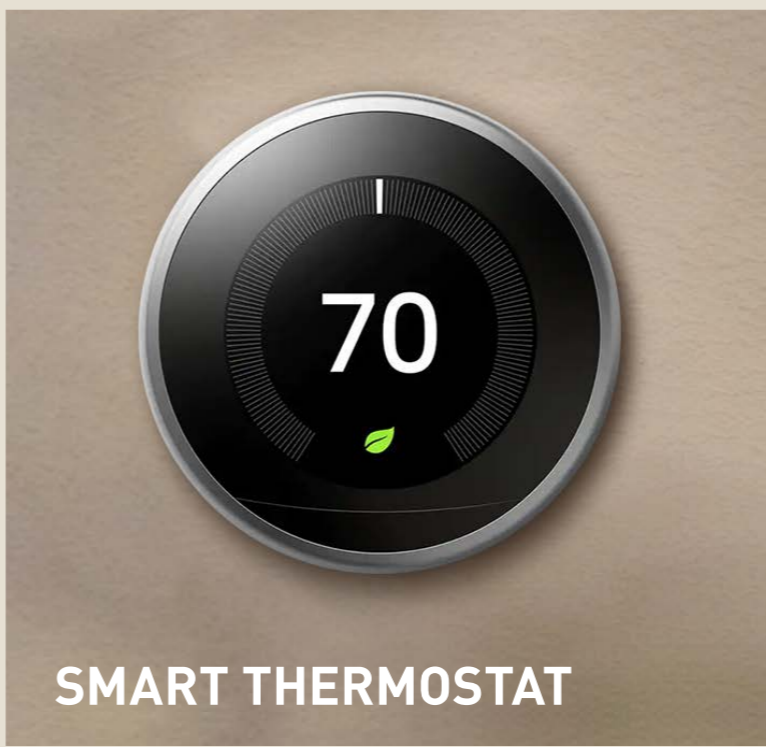
Experience technology-led smart living. With smart home technology, you can unlock your apartment door sitting halfway across the world or simply make sure your home is at your ambient temperature before you arrive.



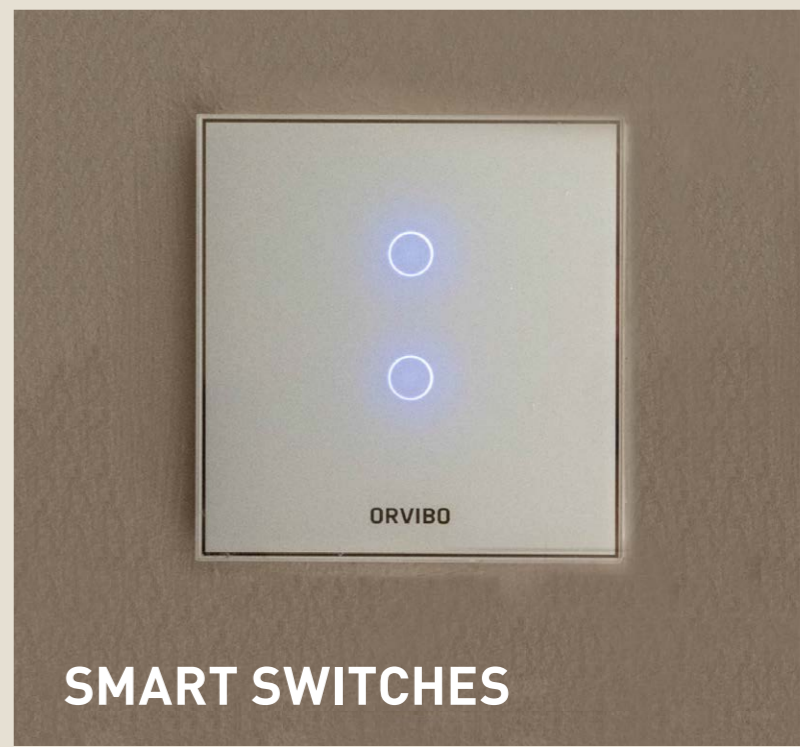
SMART LOCK



SMART HUB



SMART THERMOSTAT



SMART SWITCHES

*Images for illustration purpose only.



DESIGNED FOR CONVENIENCE

Our built-in appliances are designed and placed to bring comfort to your lives. The kitchen also has a wine cooler to keep your drinks cool during the summer.



BUILT-IN FRIDGE AND FREEZER



BUILT-IN WINE COOLER



BUILT-IN STOVE



BUILT-IN OVEN

LIVING

LIVE IN : CHOICE



DISCOVER CHOICE

Uncover seamless living with comfort at the heart of everything you experience within. Everything from the corners to the angles and spaces, you get to sense purpose at every step.



YOUR 1 BEDROOM + STUDY

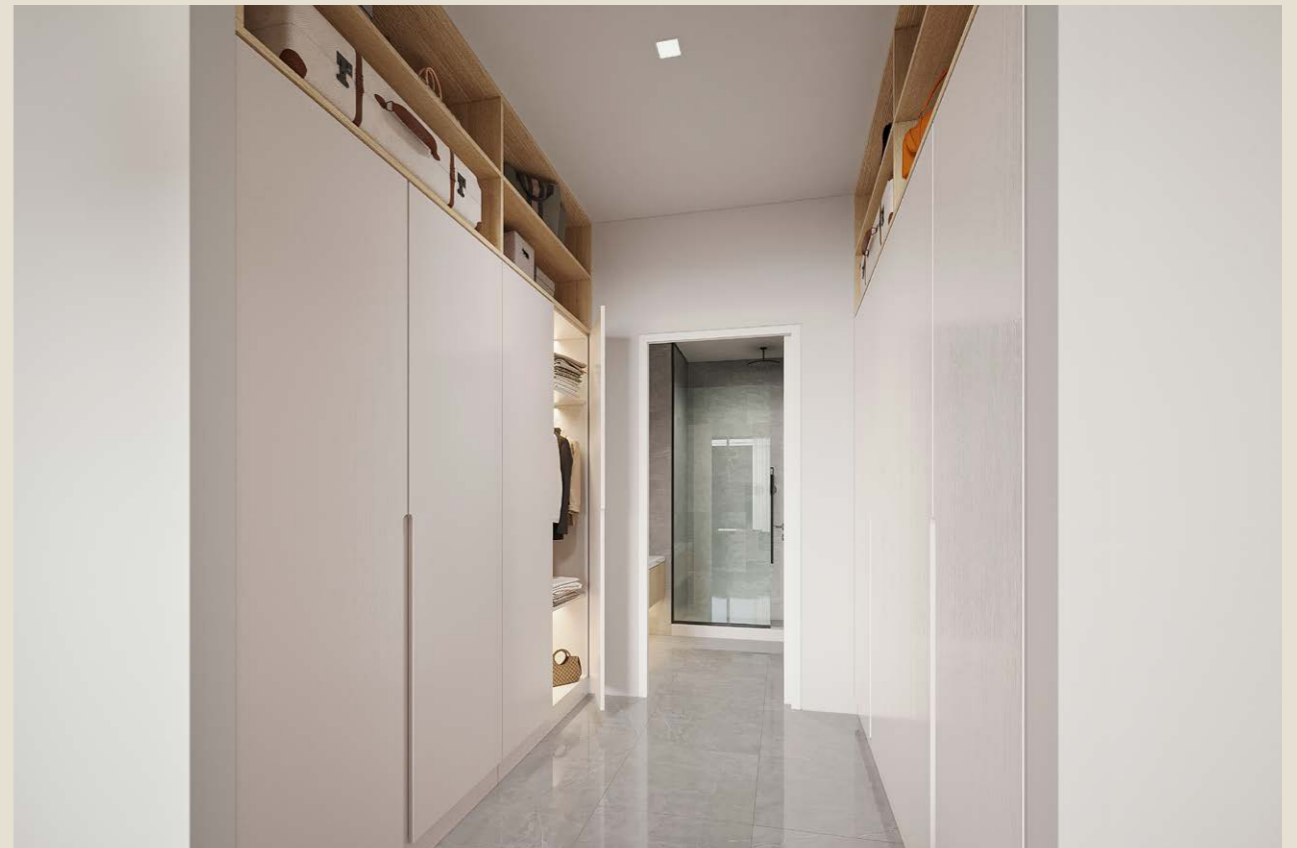
Our 1-bedroom apartment features an additional study room and comes with 2 full bathrooms. The master bedroom is an example of spacious serenity, while the kitchen is a design dream because it unlocks maximum convenience, comfort, and space.





YOUR 2 BEDROOM + STUDY

Our 2-bedroom apartment also has a study. The apartment comes with 3 full bathrooms. The whole place has a vibe of its own and will make anyone fall in love with it.





YOUR STUDY

Work-from-home and work from a place of comfort, convenience, and utility. With the advantage of having high-speed internet and comfortable lighting inside all areas, working from home has never been this easy.



STUDY

The study can either be a place to work, or a fun place for the kids to play. The choice is yours.



STUDY, AS PLAY ROOM



UNIT PLANS

LIVE IN : PURPOSE

1 BED APARTMENTS

TYPE-1A

	SQUARE METER	SQUARE FEET
SUITE AREA	79.89	860
BALCONY AREA	6.50	70
TOTAL AREA	86.39	930



Disclaimer: (1) All materials, dimensions and drawings are approximate and for illustration purposes. (2) Information is subject to change without notice. (3) Actual suite area may vary from the stated area. (4) Suite & the balcony area may vary from floor to floor. (5) Drawings not to scale. (6) The developer reserves the right to make revisions/alterations without any liability whatsoever. (7) Apartments are sold as unfurnished apartments, without furniture, furnishings, etc.

2 BED APARTMENTS

TYPE-2A

	SQUARE METER	SQUARE FEET
SUITE AREA	128.94	1388
BALCONY AREA	6.96	75
TOTAL AREA	135.90	1463



Disclaimer: (1) All materials, dimensions and drawings are approximate and for illustration purposes. (2) Information is subject to change without notice. (3) Actual suite area may vary from the stated area. (4) Suite & the balcony area may vary from floor to floor. (5) Drawings not to scale. (6) The developer reserves the right to make revisions/alterations without any liability whatsoever. (7) Apartments are sold as unfurnished apartments, without furniture, furnishings, etc.

2 BED APARTMENTS

TYPE-2B

	SQUARE METER	SQUARE FEET
SUITE AREA	124.58	1341
BALCONY AREA	8.17	88
TOTAL AREA	132.75	1429



Disclaimer: (1) All materials, dimensions and drawings are approximate and for illustration purposes. (2) Information is subject to change without notice. (3) Actual suite area may vary from the stated area. (4) Suite & the balcony area may vary from floor to floor. (5) Drawings not to scale. (6) The developer reserves the right to make revisions/alterations without any liability whatsoever. (7) Apartments are sold as unfurnished apartments, without furniture, furnishings, etc.

2 BED APARTMENTS

TYPE-2C

	SQUARE METER	SQUARE FEET
SUITE AREA	160.72	1730
BALCONY AREA	50.44	543
TOTAL AREA	211.16	2273

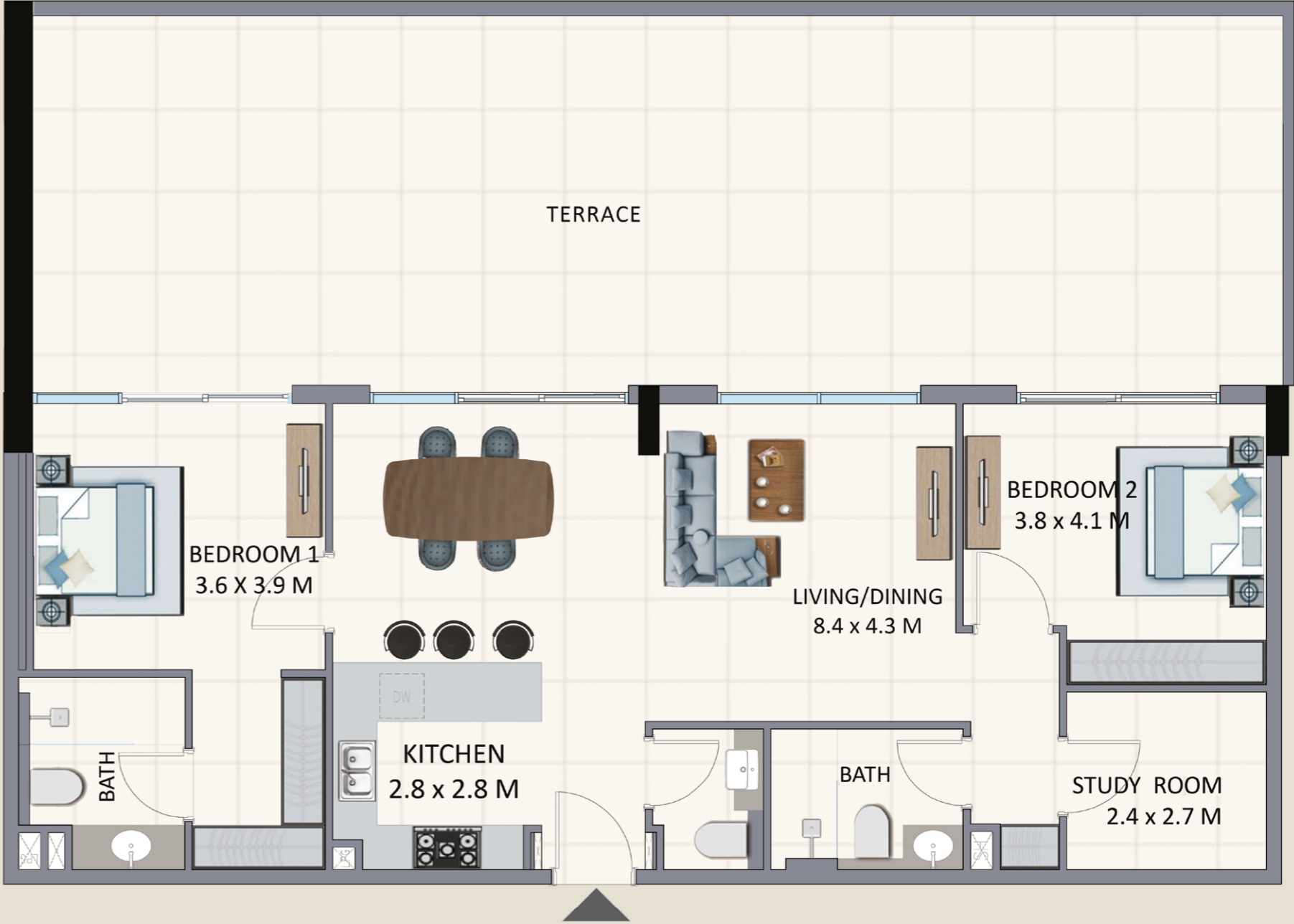


Disclaimer: (1) All materials, dimensions and drawings are approximate and for illustration purposes. (2) Information is subject to change without notice. (3) Actual suite area may vary from the stated area. (4) Suite & the balcony area may vary from floor to floor. (5) Drawings not to scale. (6) The developer reserves the right to make revisions/alterations without any liability whatsoever. (7) Apartments are sold as unfurnished apartments, without furniture, furnishings, etc.

2 BED APARTMENTS

TYPE-2D

	SQUARE METER	SQUARE FEET
SUITE AREA	110.27	1187
BALCONY AREA	86.95	936
TOTAL AREA	197.22	2123



Disclaimer: (1) All materials, dimensions and drawings are approximate and for illustration purposes. (2) Information is subject to change without notice. (3) Actual suite area may vary from the stated area. (4) Suite & the balcony area may vary from floor to floor. (5) Drawings not to scale. (6) The developer reserves the right to make revisions/alterations without any liability whatsoever. (7) Apartments are sold as unfurnished apartments, without furniture, furnishings, etc.

2 BED APARTMENTS

TYPE-2E

	SQUARE METER	SQUARE FEET
SUITE AREA	104.51	1125
BALCONY AREA	100.14	1078
TOTAL AREA	204.65	2203



Disclaimer: (1) All materials, dimensions and drawings are approximate and for illustration purposes. (2) Information is subject to change without notice. (3) Actual suite area may vary from the stated area. (4) Suite & the balcony area may vary from floor to floor. (5) Drawings not to scale. (6) The developer reserves the right to make revisions/alterations without any liability whatsoever. (7) Apartments are sold as unfurnished apartments, without furniture, furnishings, etc.

The background is a close-up of a wood grain, showing concentric growth rings in shades of brown and tan. A prominent, dark crack runs diagonally from the top-left towards the bottom-center of the image.

FLOOR PLAN

LIVE IN : ESSENCE

1ST FLOOR PLAN

NO.	TYPE	SUITE	BALCONY	TOTAL
01	1A	858	160	1,018
02	1A	858	70	928
03	1A	862	152	1,014
04	1A	860	70	930
05	1A	858	70	928
06	2B	1,341	88	1,429
07	2A	1,390	73	1,463
08	2A	1,389	71	1,459
09	1A	864	77	941
10	2A	1,388	152	1,540



Disclaimer: (1) All materials, dimensions and drawings are approximate and for illustration purposes. (2) Information is subject to change without notice. (3) Actual suite area may vary from the stated area. (4) Suite & the balcony area may vary from floor to floor. (5) Drawings not to scale. (6) The developer reserves the right to make revisions/alterations without any liability whatsoever. (7) Apartments are sold as unfurnished apartments, without furniture, furnishings, etc.

TYPICAL FLOOR PLAN (2ND-4TH FLOORS)

NO.	TYPE	SUITE	BALCONY	TOTAL
01	1A	858	70	928
02	1A	860	70	930
03	1A	862	70	933
04	1A	860	70	930
05	1A	858	70	928
06	2B	1,341	88	1,429
07	2A	1,390	73	1,463
08	1A	853	70	923
09	1A	856	70	926
10	2A	1,389	71	1,459
11	1A	864	77	941
12	2A	1,388	75	1,463



Disclaimer: (1) All materials, dimensions and drawings are approximate and for illustration purposes. (2) Information is subject to change without notice. (3) Actual suite area may vary from the stated area. (4) Suite & the balcony area may vary from floor to floor. (5) Drawings not to scale. (6) The developer reserves the right to make revisions/alterations without any liability whatsoever. (7) Apartments are sold as unfurnished apartments, without furniture, furnishings, etc.

5TH FLOOR PLAN

NO.	TYPE	SUITE	BALCONY	TOTAL
01	2C	1,624	425	2,049
02	1B	862	70	932
03	2D	1,192	720	1,911
04	2E	1,125	1,078	2,203
05	1A	853	70	923
06	2D	1,187	936	2,123
07	2A	1,289	138	1,426
08	2C	1,730	543	2,273



Disclaimer: (1) All materials, dimensions and drawings are approximate and for illustration purposes. (2) Information is subject to change without notice. (3) Actual suite area may vary from the stated area. (4) Suite & the balcony area may vary from floor to floor. (5) Drawings not to scale. (6) The developer reserves the right to make revisions/alterations without any liability whatsoever. (7) Apartments are sold as unfurnished apartments, without furniture, furnishings, etc.

ABOUT US

LIVE IN : ORIGINALITY

RIVIERA GROUP

Riviera Group is a renowned bespoke property developer with an impressive roster of developments that includes La Riviera Tower in Dubai Marina and La Riviera Apartments in Jumeirah Village Circle.

Since 2002, the Group has built approximately 1.75 Million square feet resulting in a 100% delivery track record of 1200+ units in Dubai that are fashioned to reflect people's lifestyles, bringing them ease, comfort and a sense of security.



PROJECTS IN JUMEIRAH VILLAGE CIRCLE

01. La Riviera Estates,
Mediterranean Villas
02. La Riviera Estates,
The Cote D'azur Apartments
03. La Riviera Apartments
04. La Riviera Azure

