

The background of the image is a close-up, top-down view of water. It features intricate, organic patterns of light and dark blue-green ripples, creating a textured, almost cellular appearance. The lighting is soft and diffused, highlighting the undulating surfaces of the water.

CREEK VIEWS

BY IRAZ DEVELOPMENTS

YOUR DREAM

Space Awaits!



CREEK VIEWS

By IRAZ Developments



The magic thing about home is that it
feels good to leave, and it feels even
better to come back.

Wendy Wunder



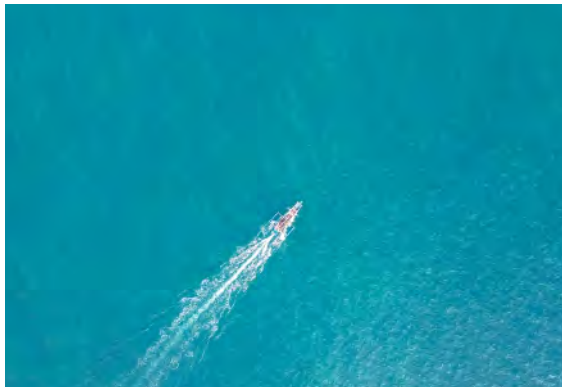


IRAZ

DEVELOPMENTS

וכפי







ROOF TOP

14
RESIDENTIAL
FLOORS

GROUND FLOOR

2 BASEMENT
PARKING



*Where Every Moment
Is Elevated*



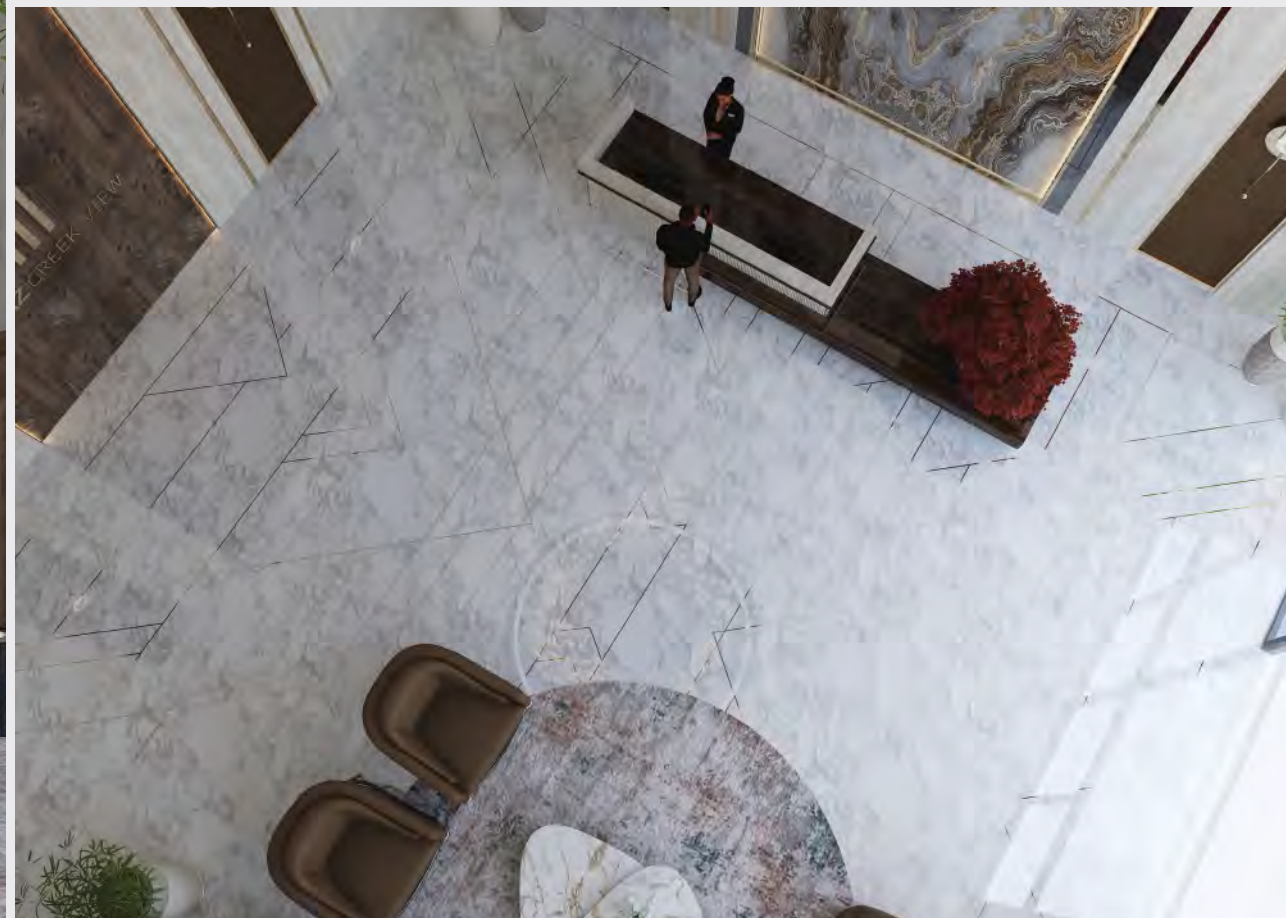
IRAZ
DEVELOPMENTS





IRAZ CREEK VIEW

LOBBY



 **13 FLOOR**

 13

 MITSUBISHI

13








INDOOR KIDS PLAY AREA



POOL SIDE



GYM



ENTRY



LIVING ROOM



KITCHEN & DINING



BEDROOM







STUDIO



LAUNDRY



BATHROOM



POWDER ROOM





SMART HOME





Oasis of
FAMILY FUN

A family pool haven, where laughter echoes
and memories are made, creating moments that last a lifetime.



Dive into
DYNAMIC PLAY AREA

A realm where every corner sparks creativity and adventure.



Elevating Your
GARDEN PARADISE

A sanctuary where lush foliage dances in harmony,
a haven where every breath whispers the poetry of growth and renewal.



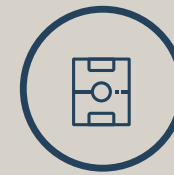
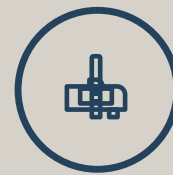
Where Every
STEP MATTERS

A meticulously designed to evoke a sense of mindfulness
and connection with nature.



Find Your
PERFECT CATCH

Embark on your ultimate fishing adventure, where every cast holds the promise of thrills and memories, waiting to be caught.



- 24/7 Security and Surveillance
- Dedicated Parking Facility
- Fitness Centre or Gym

- Swimming Pool
- Well-Maintained Common Areas
- Energy-Efficient Appliances

- Adequate Storage Spaces
- Emergency Response Systems
- Package Delivery Services

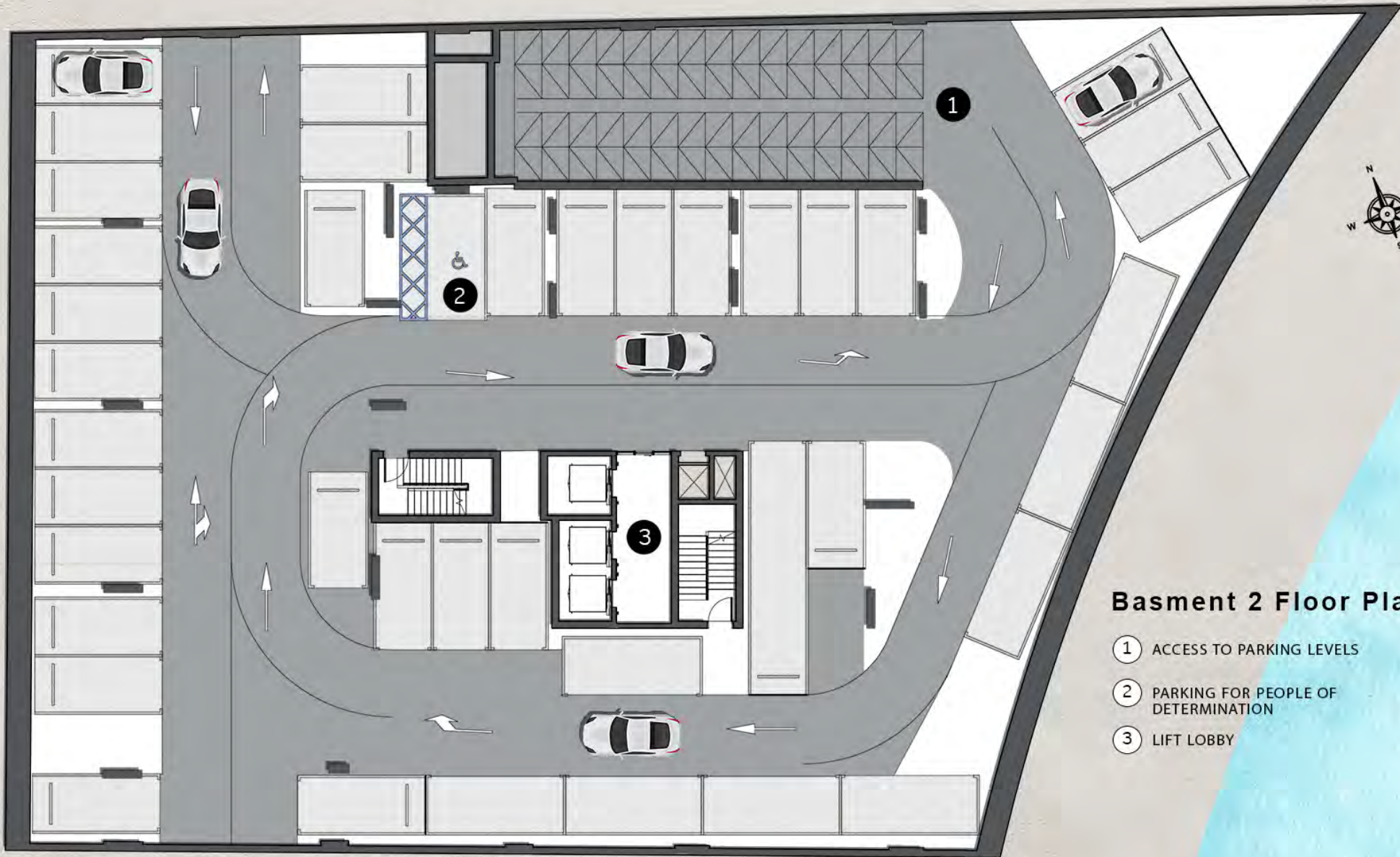
- Modern Kitchen and Bathroom Fitting
- Accessible Elevators and Staircases
- Stunning Views



Basment 1 Floor Plan

- ① ACCESS TO PARKING LEVELS
- ② PARKING FOR PEOPLE OF DETERMINATION
- ③ LIFT LOBBY

DUBAI CREEK



Basement 2 Floor Plan

- ① ACCESS TO PARKING LEVELS
- ② PARKING FOR PEOPLE OF DETERMINATION
- ③ LIFT LOBBY

DUBAI CREEK





Ground Floor Plan

- ① ACCESS TO PARKING LEVELS
- ② PARKING FOR PEOPLE OF DETERMINATION
- ③ LIFT LOBBY
- ④ MAIN ENTRANCE
- ⑤ BICYCLE PARKING

DUBAI CREEK



1st Floor Plan

-  1 BEDROOM
-  2 BEDROOM

DUBAI CREEK





**2ND - 3RD
Floor Plan**

- STUDIO
- 1 BEDROOM
- 2 BEDROOM

DUBAI CREEK



**4TH - 13TH
Floor Plan**

-  1 BEDROOM
-  2 BEDROOM

DUBAI CREEK



02
PENTHOUSE B
4 BEDROOM+MAID

03
PENTHOUSE C
4 BEDROOM+MAID

01
PENTHOUSE A
4 BEDROOM+MAID

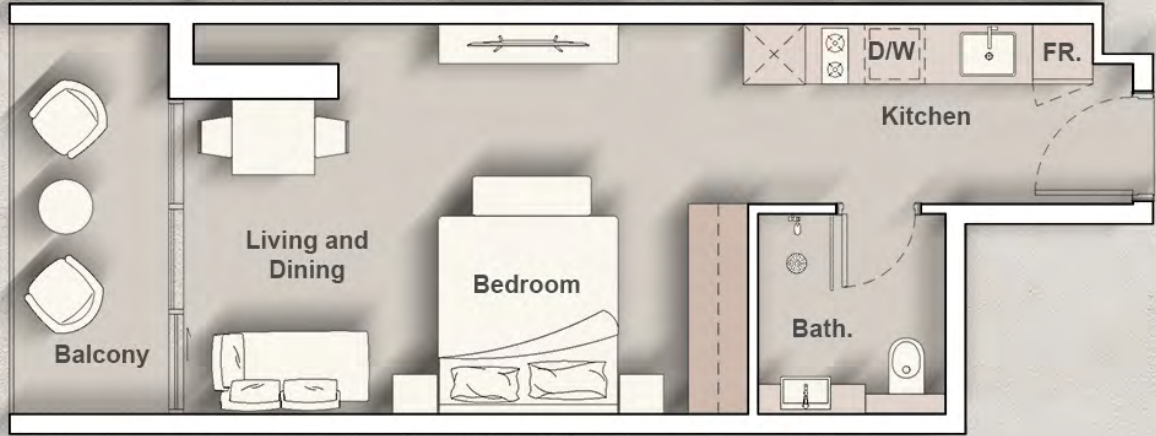
14TH Floor Plan

 PENTHOUSE
4 BEDROOM+MAID

DUBAI CREEK

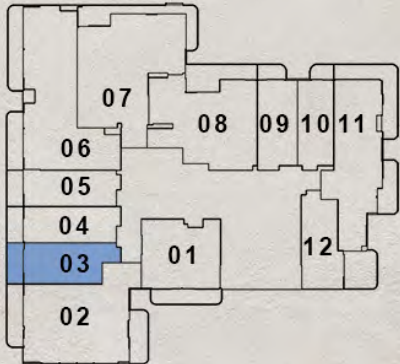
STUDIO

TYPE A



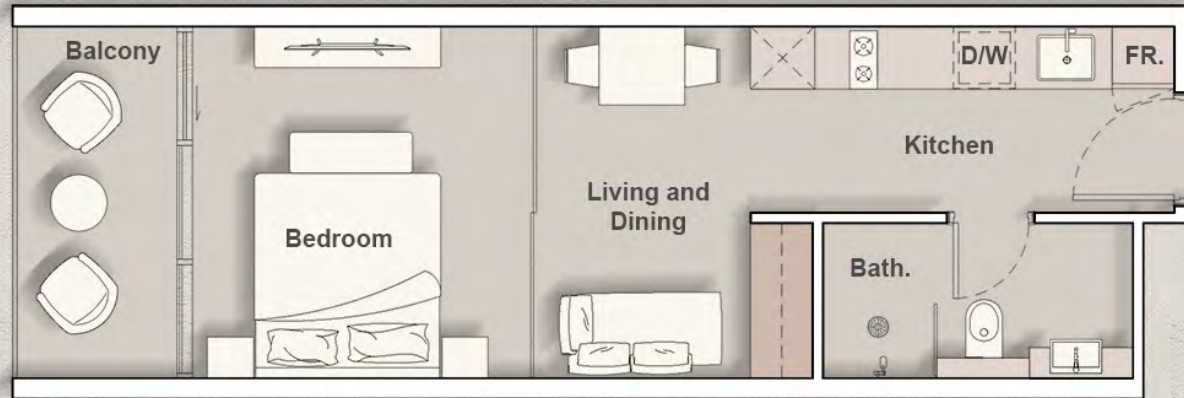
Internal Living Area : 382.98 Sq. Ft.
Outdoor Living Area : 73.30 Sq. Ft.
Total Living Area : 456.28 Sq. Ft.

2nd - 3rd Floor



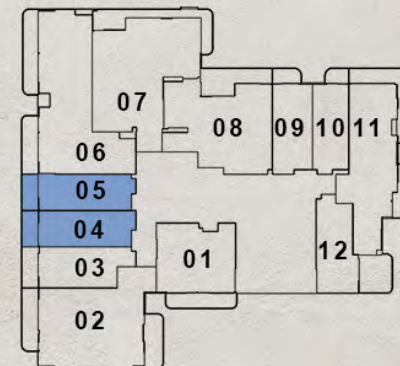
STUDIO

TYPE B

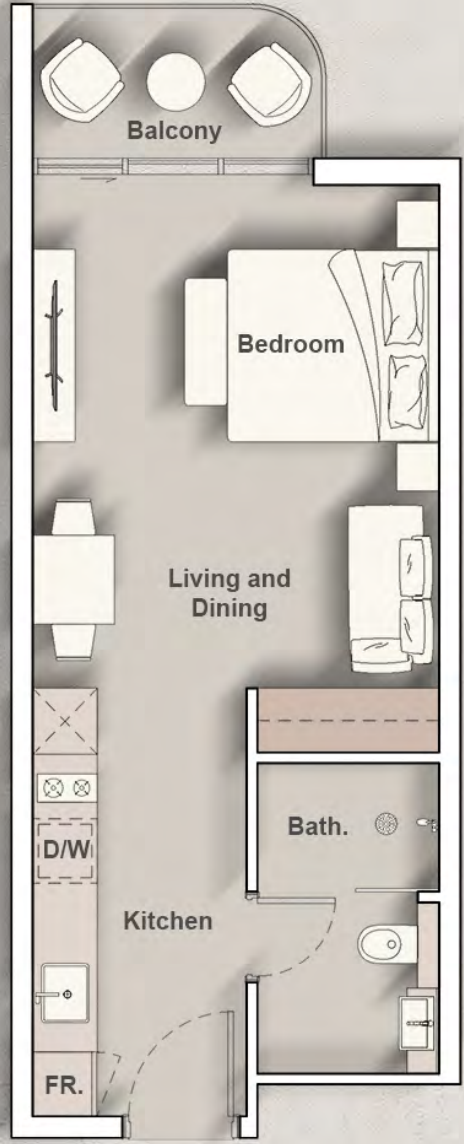


Internal Living Area : 367.70 Sq. Ft.
Outdoor Living Area : 64.05 Sq. Ft.
Total Living Area : 431.74 Sq. Ft.

2nd - 3rd Floor

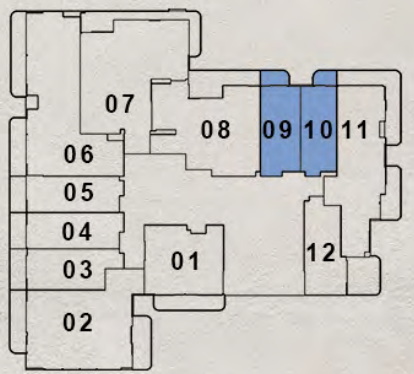


STUDIO
TYPE C



Internal Living Area : 377.38 Sq. Ft.
Outdoor Living Area : 44.99 Sq. Ft.
Total Living Area : 422.38 Sq. Ft.

2nd - 3rd Floor

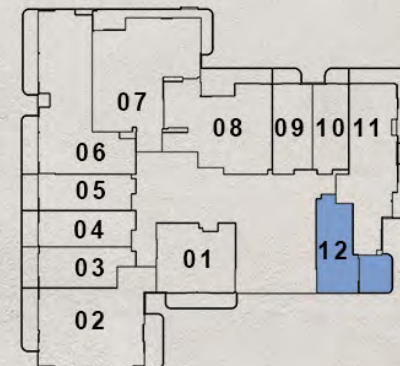


STUDIO
TYPE D



Internal Living Area : **389.65 Sq. Ft.**
Outdoor Living Area : **133.69 Sq. Ft.**
Total Living Area : **523.34 Sq. Ft.**

2nd - 3rd Floor



1 BEDROOM

TYPE A



Internal Living Area : 571.46 Sq. Ft.
Outdoor Living Area : 112.70 Sq. Ft.
Total Living Area : 684.15 Sq. Ft.

1st Floor



2nd - 3rd Floor

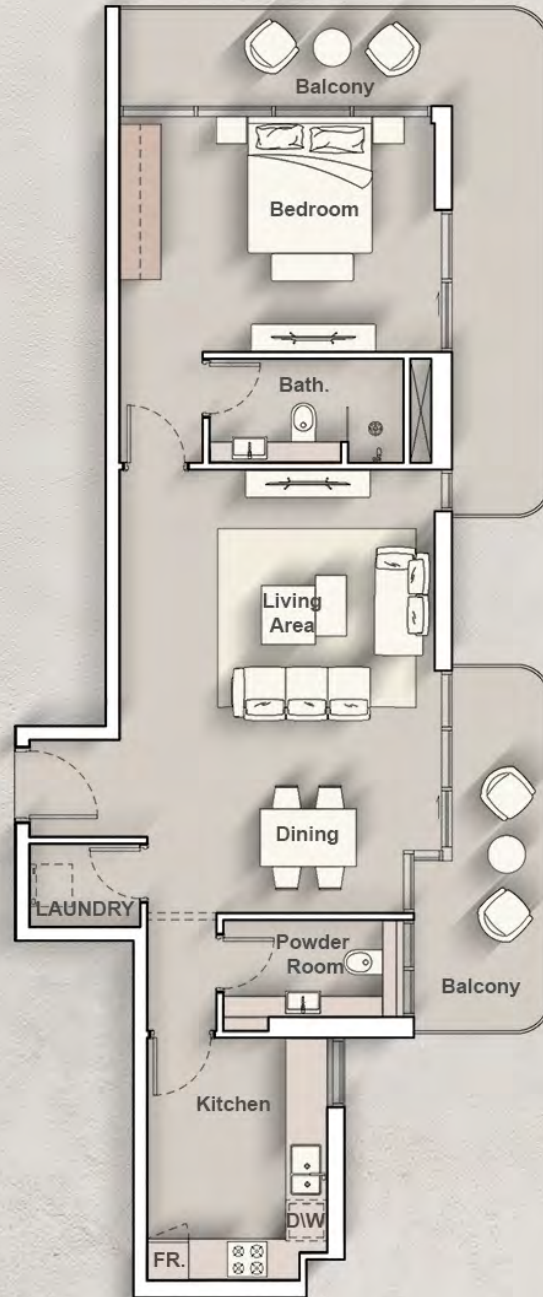


4th - 13th Floor



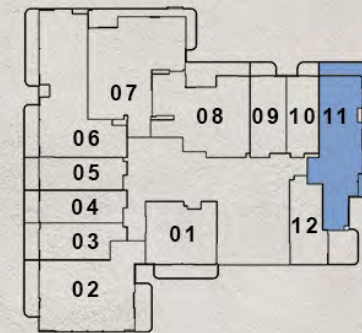
1 BEDROOM

TYPE B



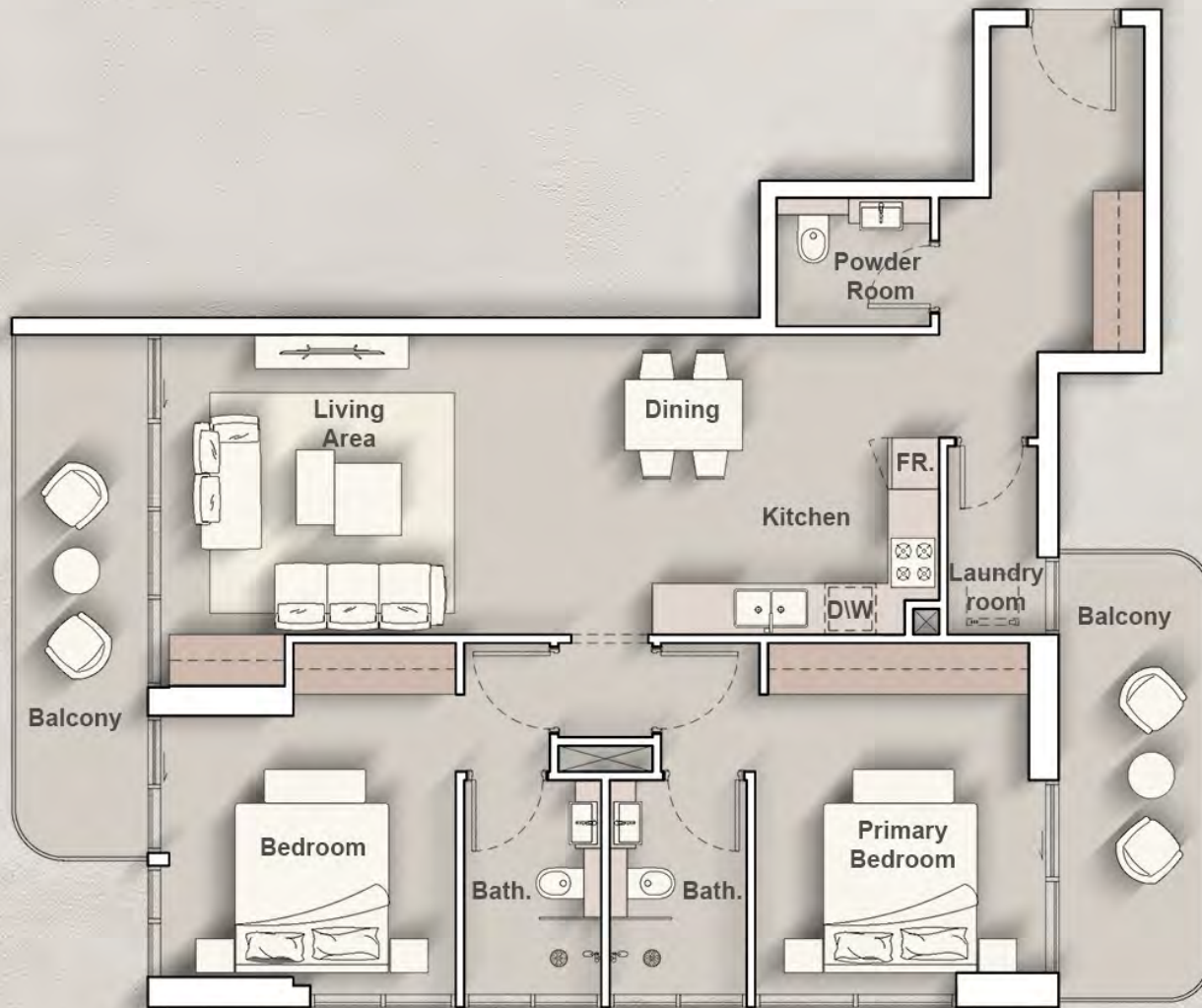
Internal Living Area : 812.24 Sq. Ft.
Outdoor Living Area : 298.27 Sq. Ft.
Total Living Area : 1110.51 Sq. Ft.

2nd - 3rd Floor



2 BEDROOM

TYPE A



Internal Living Area : 1008.69 Sq. Ft.

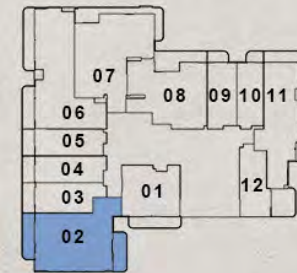
Outdoor Living Area : 216.68 Sq. Ft.

Total Living Area : 1225.36 Sq. Ft.

1st Floor



2nd - 3rd Floor



4th - 13th Floor



2 BEDROOM

TYPE B



Internal Living Area : 1117.83 Sq. Ft.
Outdoor Living Area : 200.21 Sq. Ft.
Total Living Area : 1318.04 Sq. Ft.

1st Floor

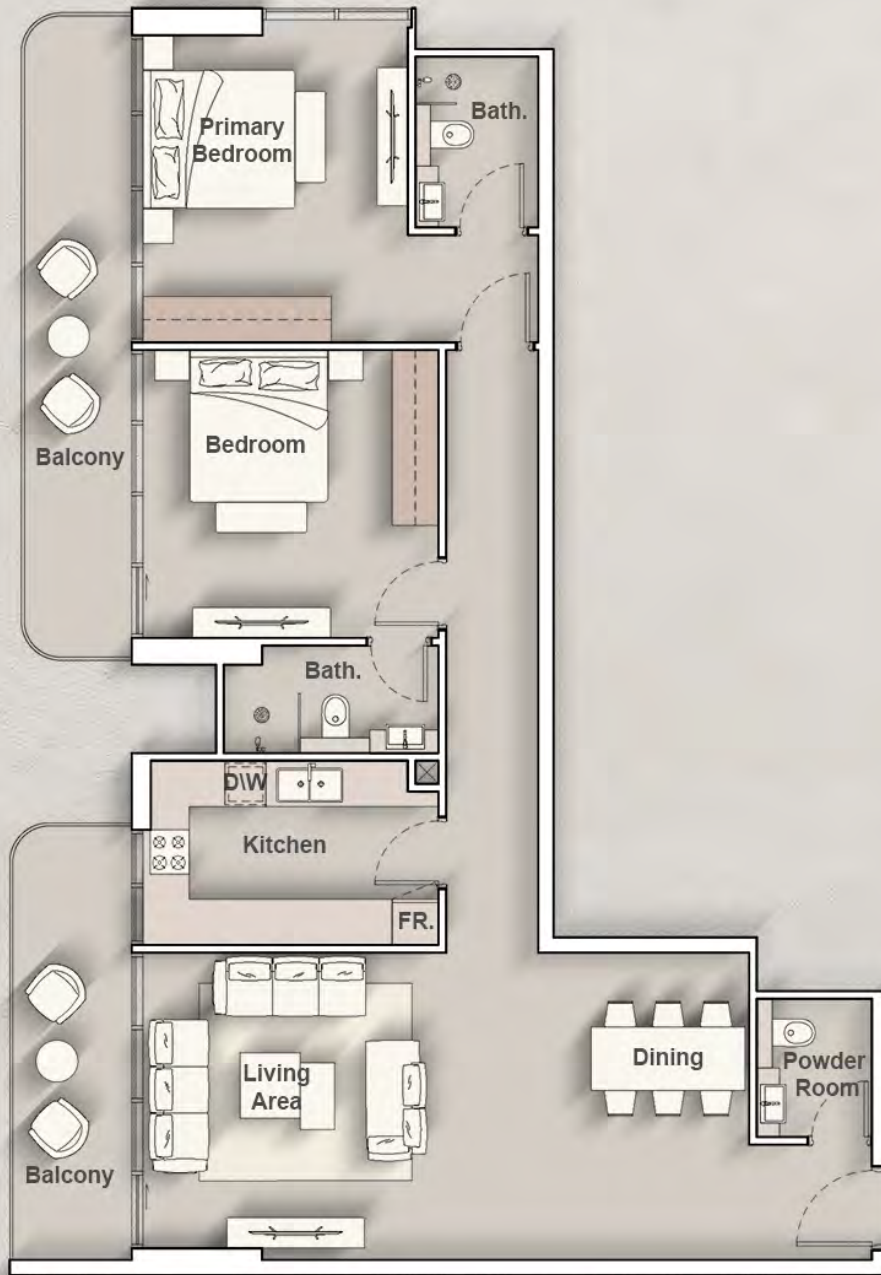


4th - 13th Floor



2 BEDROOM

TYPE C

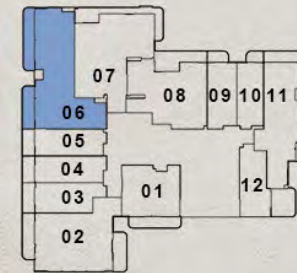


Internal Living Area : 1095.77 Sq. Ft.
Outdoor Living Area : 236.38 Sq. Ft.
Total Living Area : 1332.14 Sq. Ft.

1st Floor



2nd - 3rd Floor



4th - 13th Floor



2 BEDROOM

TYPE D



Internal Living Area : 1108.04 Sq. Ft.
Outdoor Living Area : 193.97 Sq. Ft.
Total Living Area : 1302.00 Sq. Ft.

1st Floor



2nd - 3rd Floor



4th - 13th Floor



2 BEDROOM

TYPE E



Internal Living Area : 907.07 Sq. Ft.
Outdoor Living Area : 160.60 Sq. Ft.
Total Living Area : 1067.67 Sq. Ft.

1st Floor



2nd - 3rd Floor

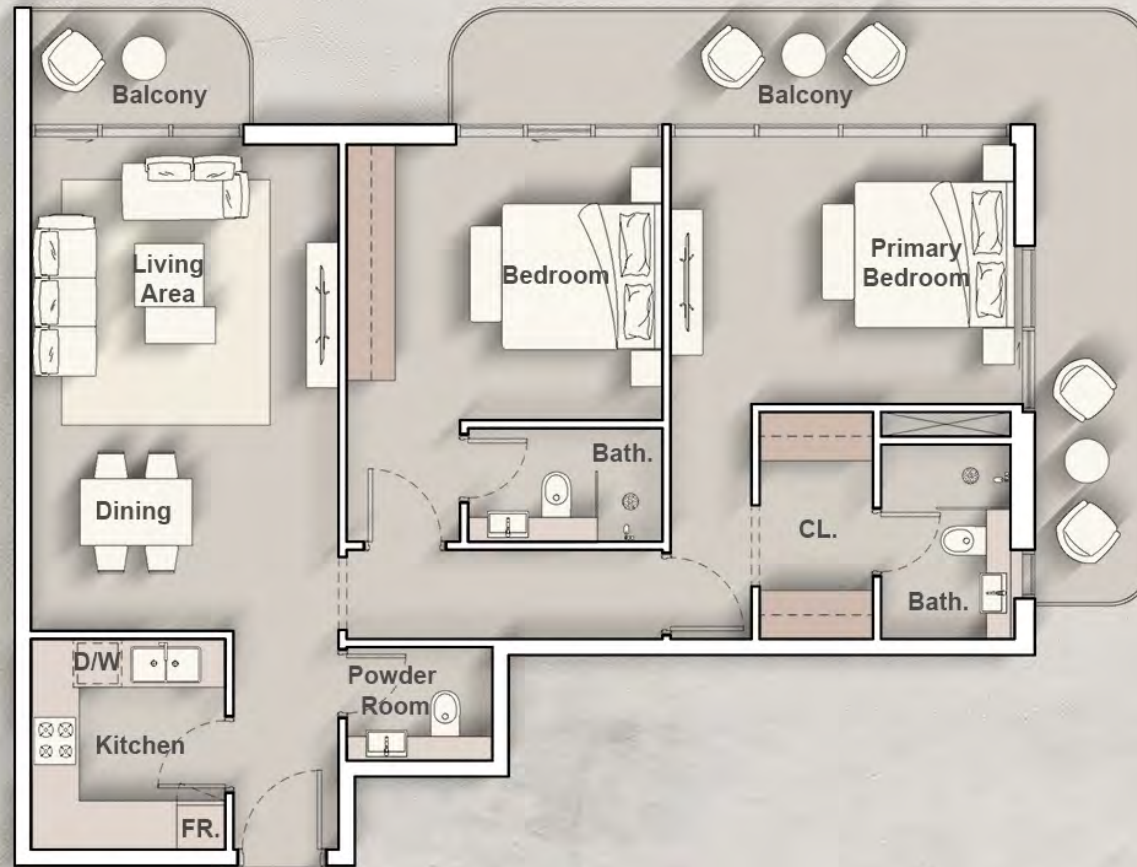


4th - 13th Floor



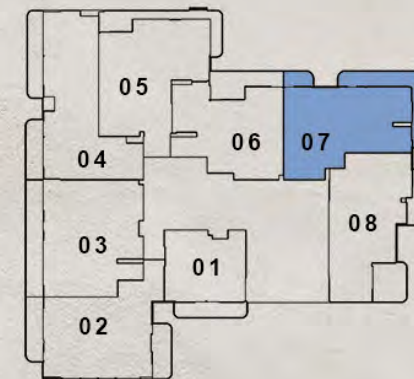
2 BEDROOM

TYPE F



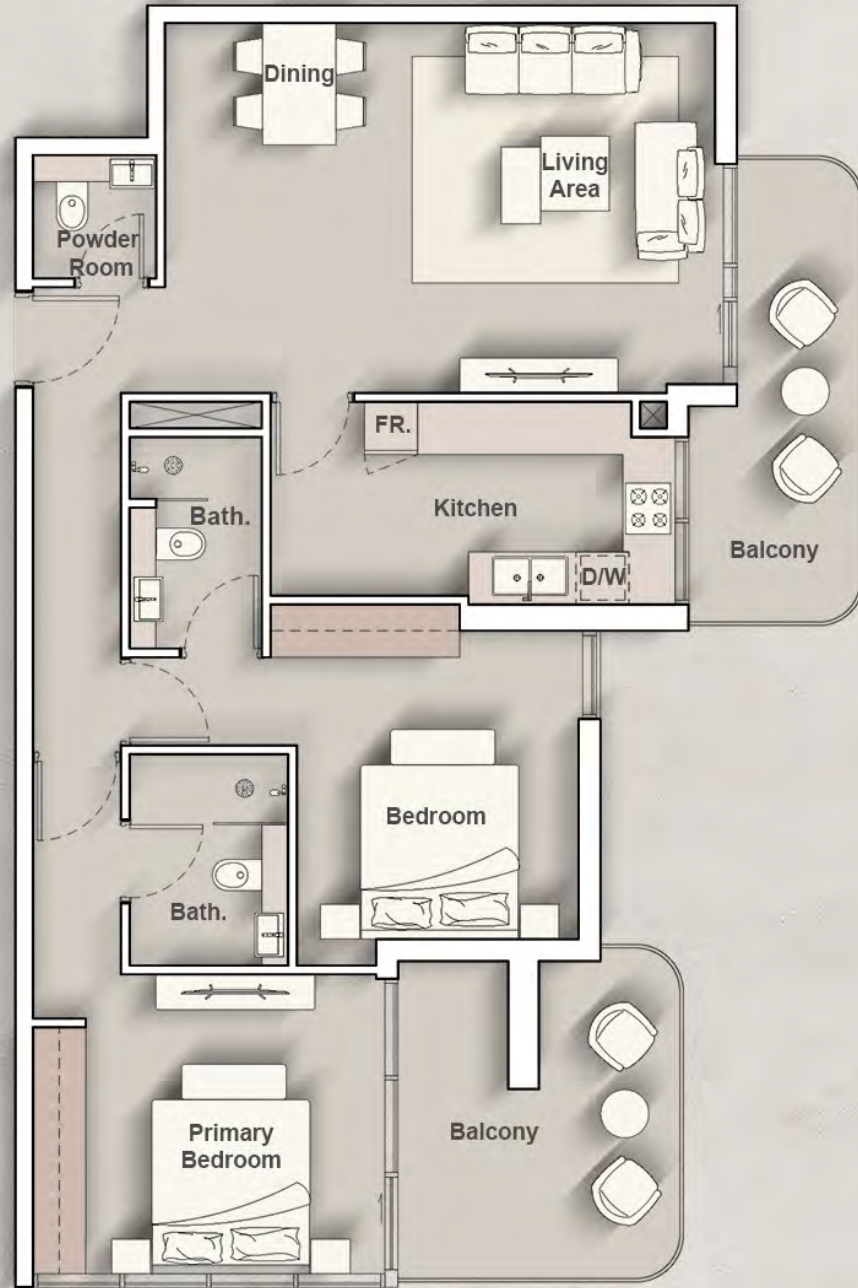
Internal Living Area : **987.16 Sq. Ft.**
Outdoor Living Area : **280.29 Sq. Ft.**
Total Living Area : **1267.45 Sq. Ft.**

4th - 13th Floor



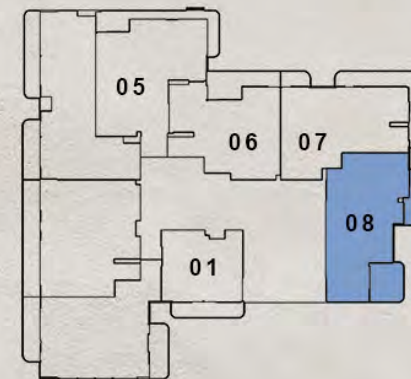
2 BEDROOM

TYPE G



Internal Living Area : **979.73 Sq. Ft.**
Outdoor Living Area : **234.33 Sq. Ft.**
Total Living Area : **1214.06 Sq. Ft.**

4th - 13th Floor



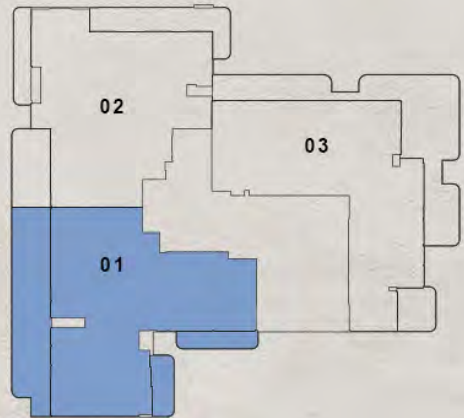
PENTHOUSE A

4 BEDROOM+MAID



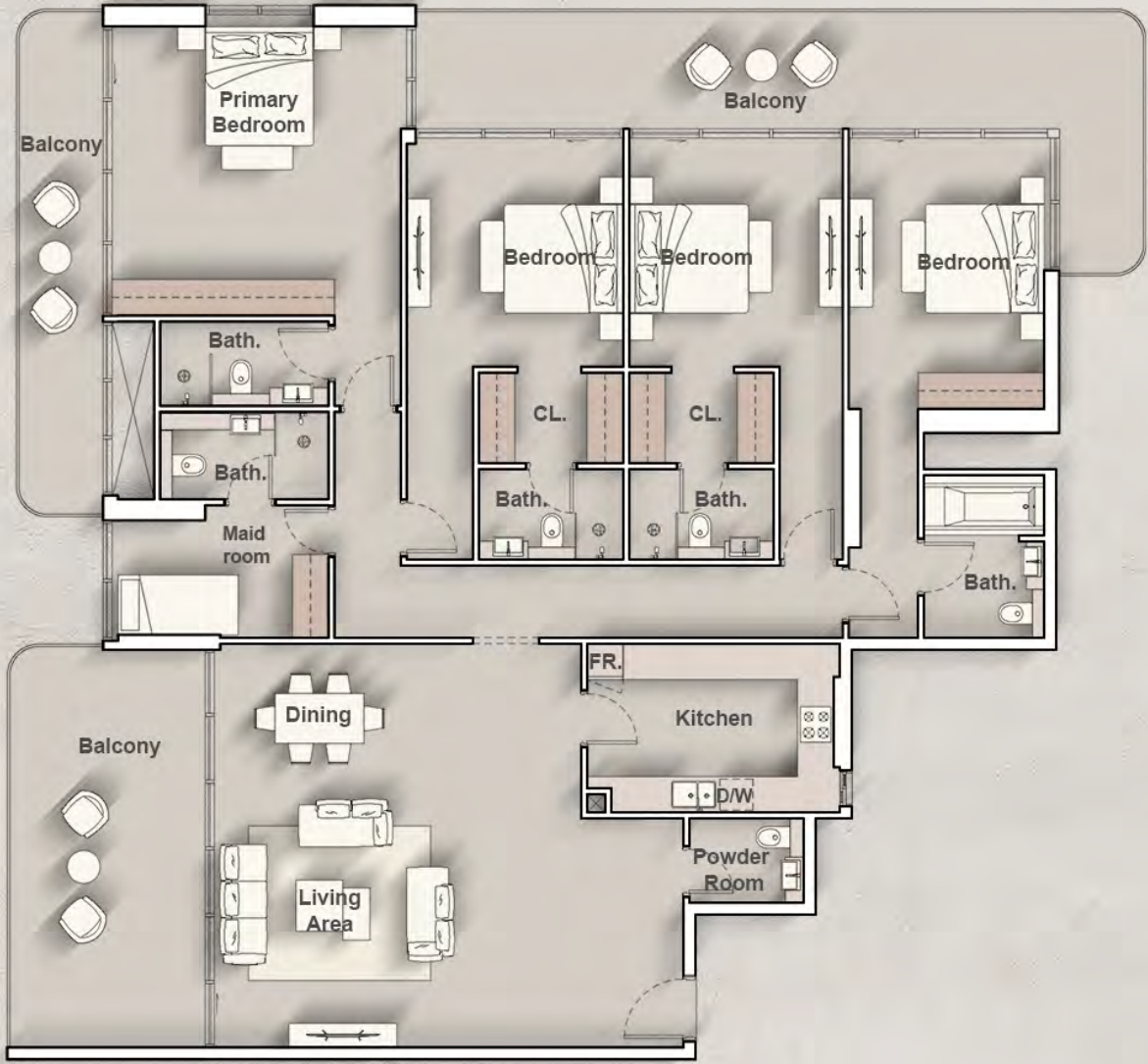
Internal Living Area : 2313.38 Sq. Ft.
Outdoor Living Area : 852.50 Sq. Ft.
Total Living Area : 3165.88 Sq. Ft.

14th FLOOR



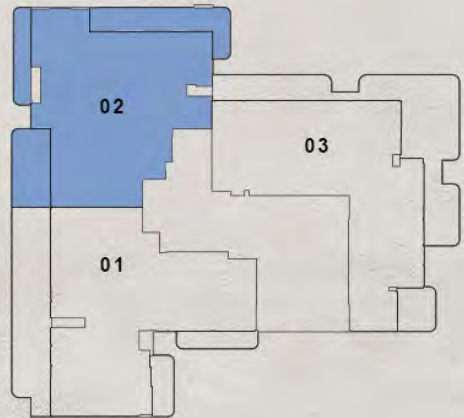
PENTHOUSE B

4 BEDROOM+MAID



Internal Living Area : 2187.12 Sq. Ft.
Outdoor Living Area : 690.50 Sq. Ft.
Total Living Area : 2877.62 Sq. Ft.

14th FLOOR



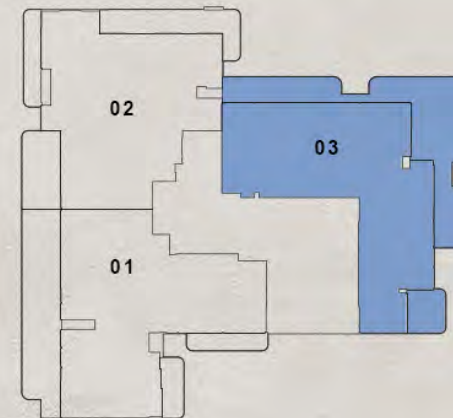
PENTHOUSE C

4 BEDROOM+MAID



Internal Living Area : 2250.52 Sq. Ft.
Outdoor Living Area : 1091.46 Sq. Ft.
Total Living Area : 3341.98 Sq. Ft.

14th FLOOR





A

 Adjacent To Dubai Creek

 10 Minutes to Downtown Dubai

 10 Minutes to Dubai Mall

 10 Minutes to Dubai International Airport



✉ sales@irazdevelopments.com

☎ **800 IRAZ (4729)**

🌐 www.irazdevelopments.com

📍 Office No 106 , T&G Avenue , Indigo Central 8 street , Al Manara Sheikh Zayed Rd – Dubai