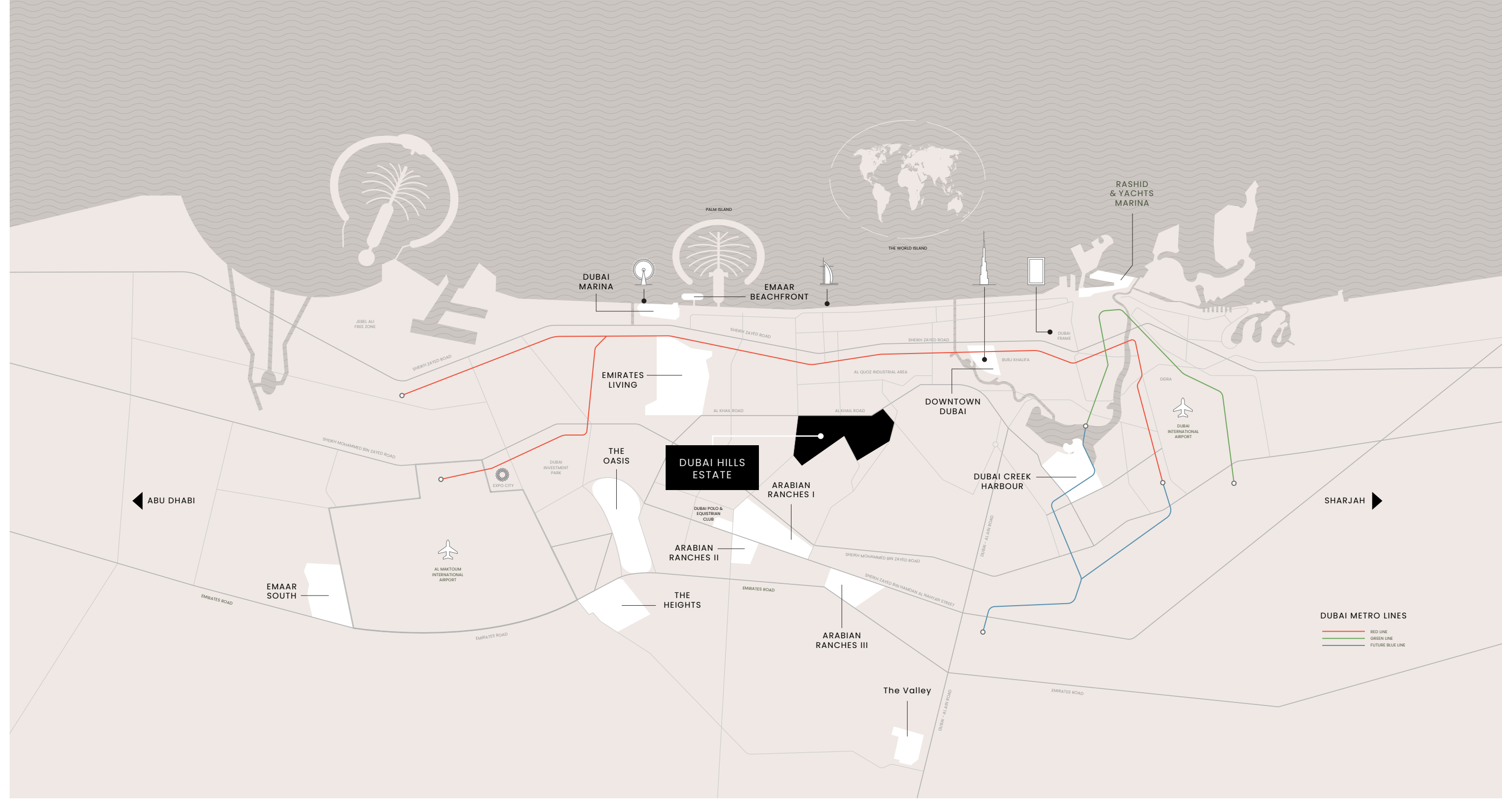




DUBAI HILLS ESTATE

Dubai Hills Estate - the green heart of Dubai - is a first-of-its-kind destination. This masterfully planned, multi-purpose development forms an integral part of the Mohammed Bin Rashid City. Strategically situated between Downtown Dubai and Dubai Marina, flanked by Al Khail Road, the community offers easy access to the city's most popular districts and attractions.



ADDRESS RESIDENCES DUBAI HILLS ESTATE

Step into a sanctuary where contemporary luxury merges with vibrant urban living. Designed for modern lifestyles, Address Residences Dubai Hills Estate offers the finest in branded residential comfort and elegance. Your luxurious home, in the signature style of Address Hotels + Resorts, awaits you.



Premium Residences



Spacious 1, 2 and 3-bedroom apartments, thoughtfully designed for the modern life. Every home offers panoramic views, modern amenities, and sophisticated finishes.

Residential Units

Apartment	Units	Avg. Area (sq. ft.)	Starting Price (in AED Mn)
1-Bedroom	256	752	1.93 Mn
2-Bedroom	250	1,114	2.77 Mn
3-Bedroom	69	1,533	3.97 Mn



Payment Plan

Instalment	Payment Percentage	Date
Down Payment	10%	AUG 2024
1st Instalment	10%	OCT 2024
2nd Instalment	10%	MAR 2025
3th Instalment	10%	AUG 2025
4th Instalment 10% Construction Completion	10%	FEB 2026
5th Instalment 20% Construction Completion	5%	AUG 2026
6th Instalment 40% Construction Completion	10%	MAR 2027
7th Instalment 60% Construction Completion	5%	OCT 2027
8th Instalment 80% Construction Completion	10%	APR 2028
9th Instalment 100% Construction Completion	20%	FEB 2029

Floor Plans

TOWER A

1 Bedroom



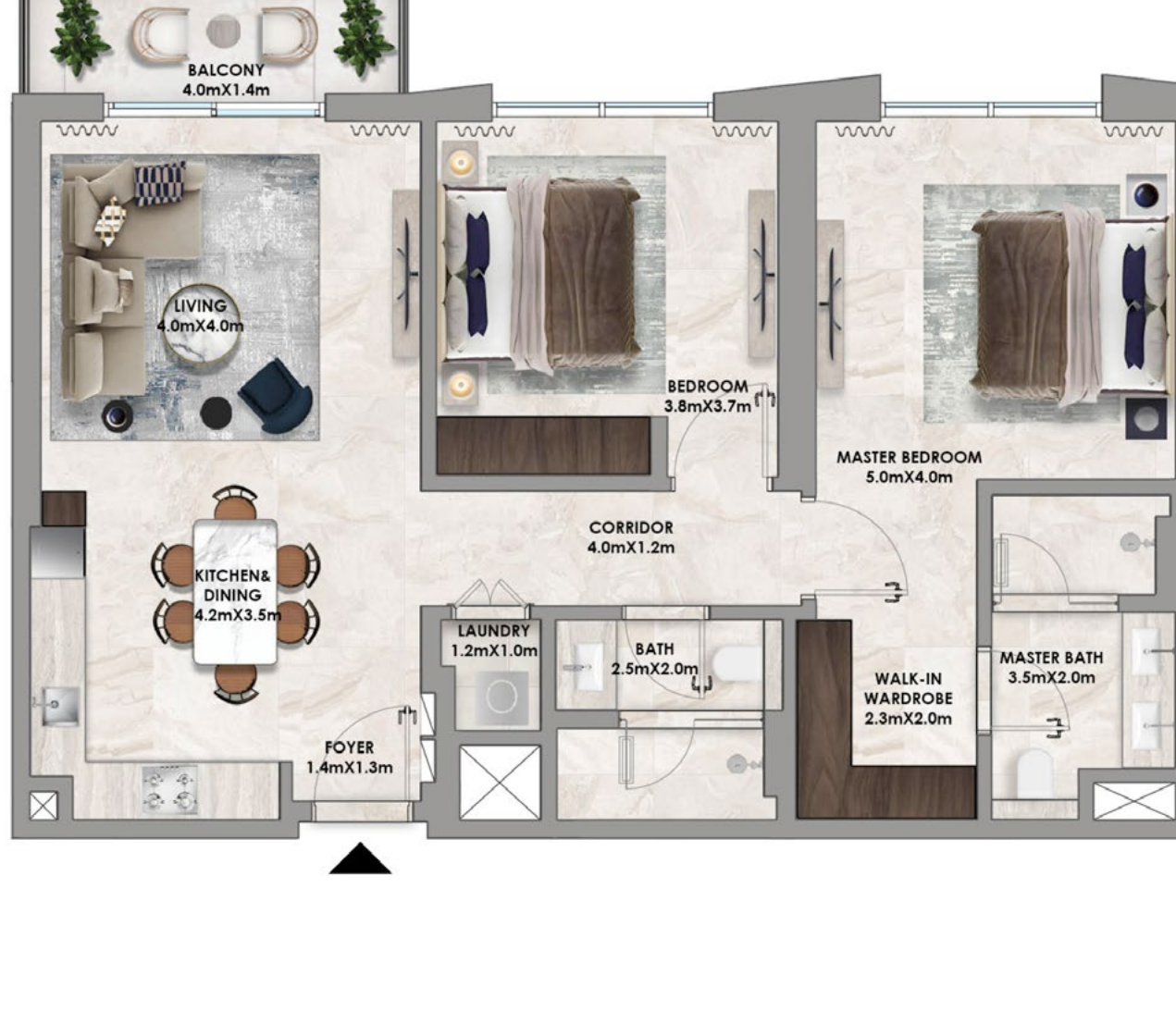
2 Bedroom Type A



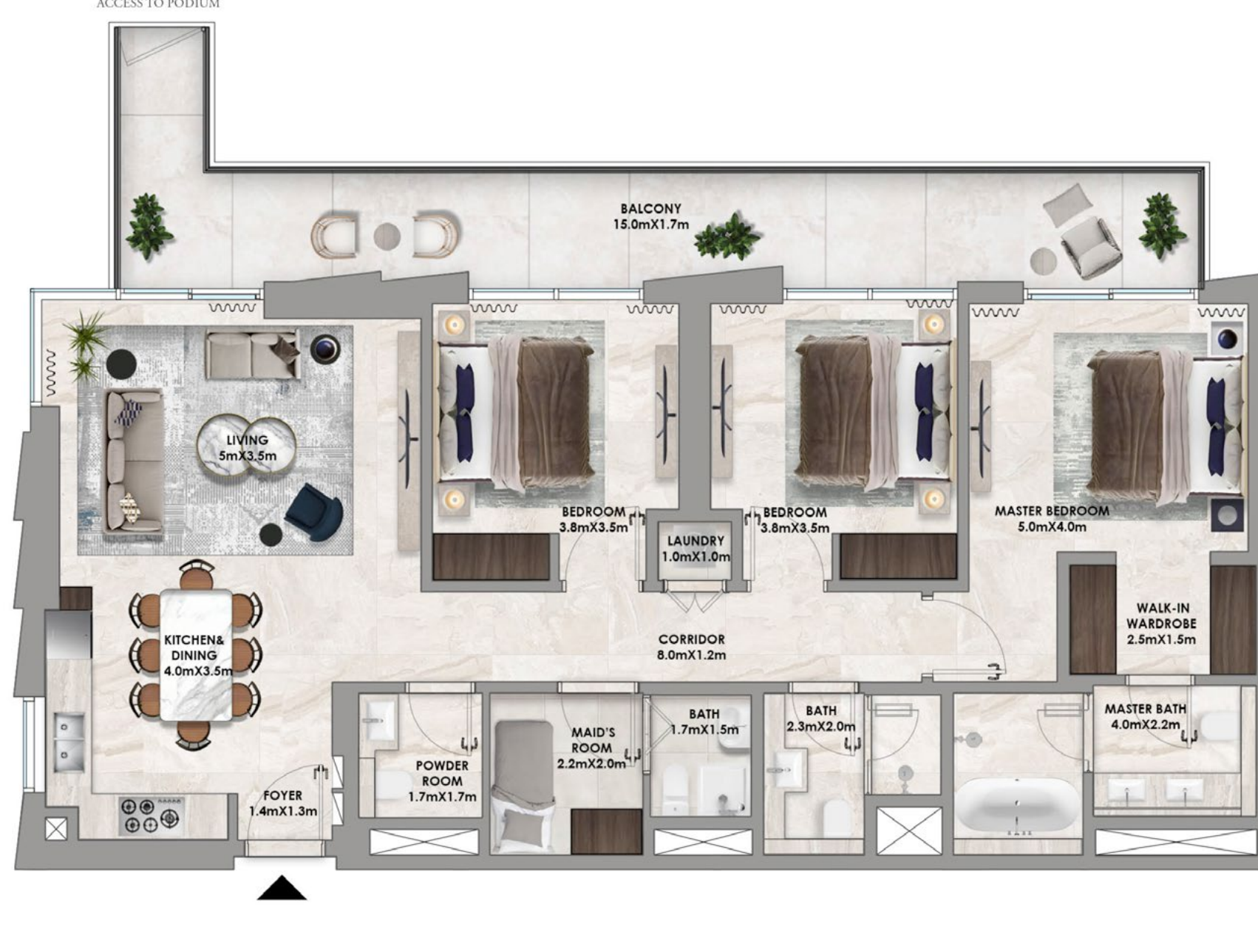
2 Bedroom Type B



2 Bedroom Type B.3



3 Bedroom Type A.1

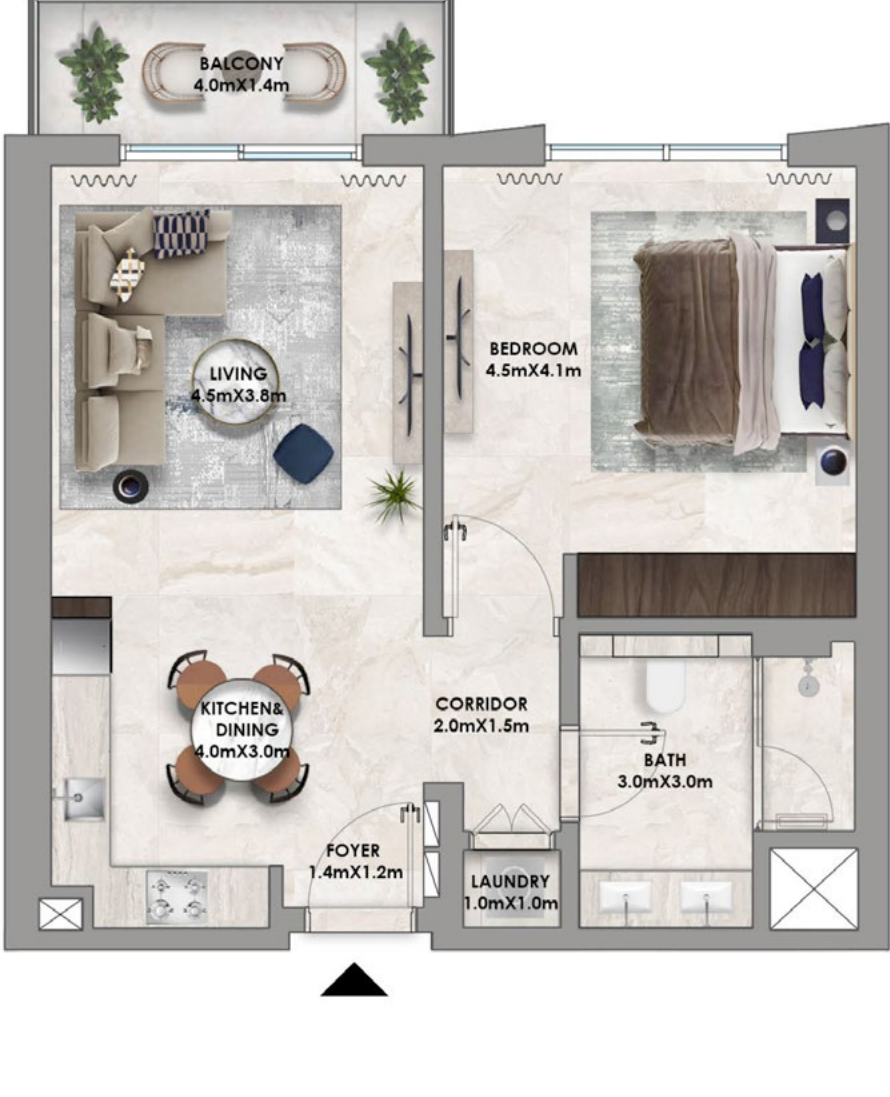


3 Bedroom Type A.4



TOWER B

1 Bedroom Type A



1 Bedroom Type B



2 Bedroom Type A



2 Bedroom Type B.1



2 Bedroom Type B.3



3 Bedroom Type A.2



3 Bedroom Type A.4



Springfield

Properties

 +971 4 454 2588

info@springfield-re.com

springfieldproperties.ae