

# MIRA VILLAS

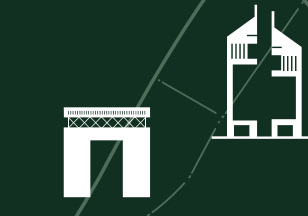
DESIGNED BY **BENTLEY HOME**





DISTRICT 11, MBR CITY

Breathtaking views of Dubai's skyline and the serenity of a private lagoon create a perfect balance between urban convenience and natural beauty.



THE DUBAI MALL



Meydan Racecourse

**MIRA VILLAS**

DESIGNED BY BENTLEY HOME

Al Ain - Dubai Rd

Sheikh Mohammed Bin Zayed Rd



## FACTS

36 fully furnished villas  
D11 district, Meydan, Dubai  
Crystal lagoon  
Bespoke gym  
Club House with F&B services

## EXCLUSIVE SERVICES

24/7 Concierge  
24/7 Security surveillance  
24/7 Valet parking  
Housekeeping services  
Laundry services  
In-residence babysitting  
Grocery delivery  
Residence event catering  
Food Delivery







27 5-BEDROOM WATERFRONT VILLAS  
7,212 square feet each

9 EXCLUSIVE 5-BEDROOM WATERFRONT MANSIONS  
15,000 square feet each



BENTLEY HOME

The Bentley Home collection translates silhouettes and shapes synonymous with the British automotive legend into a language of impeccable Italian furniture.



**BENTLEY**

HOME





## THREE FACES OF LUXURY

Each unit in Mira Villas designed by Bentley Home comes in one of three interior styles catering to your personal preferences.

TRADITIONAL



FORMAL



CONTEMPORARY





# 5 BED VILLA

7,212 square feet

4 main bedrooms on the first floor

1 guest bedroom on the ground floor

Lagoon view





5 BED VILLA  
TRADITIONAL





5 BED VILLA  
FORMAL





5 BED VILLA  
CONTEMPORARY





# 5 BED MANSION

15,000 square feet

4 main bedrooms on the first floor

1 guest bedroom on the ground floor

Lagoon view





# 5 BED MANSION TRADITIONAL





# 5 BED MANSION FORMAL





# 5 BED MANSION CONTEMPORARY





5 BED MANSION  
PRIVATE GYM





5 BED MANSION  
PRIVATE CINEMA







PRIVATE LAGOON

Every single unit enjoys a waterfront location and lagoon views.






## BESPOKE GYM

The community features a custom-designed gymnasium by Technogym and a dedicated club house offering F&B services and a relaxed ambience.



A modern outdoor terrace featuring a swimming pool, lounge chairs, and tropical plants. The terrace is covered by a pergola with wooden slats. The pool is rectangular and filled with clear blue water, surrounded by white pebbles. Two lounge chairs with beige cushions and a small table are positioned on the left. The background shows a lush tropical landscape with palm trees and large green plants.

SPACIOUS TERRACES

Enjoy sunbathing in the comfort of your home with private terraces.



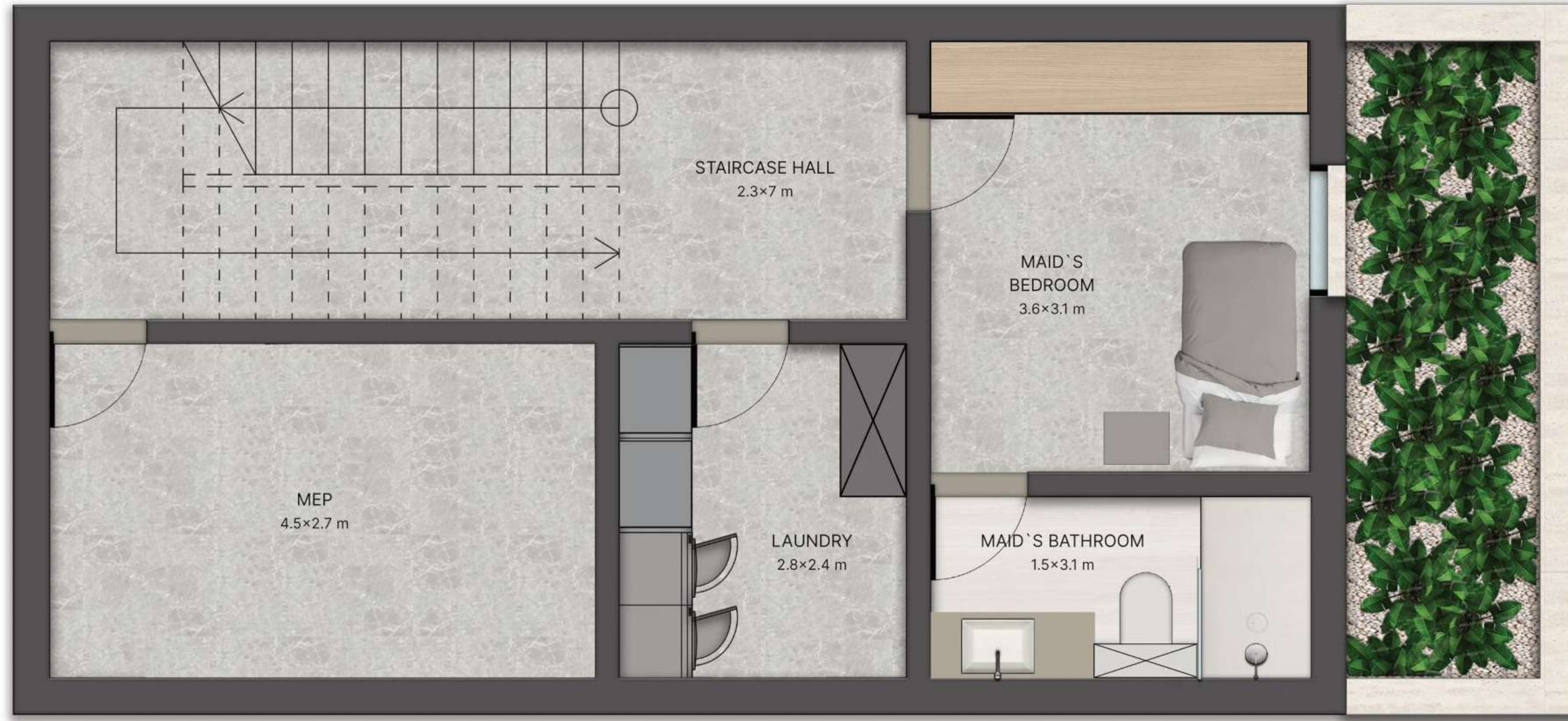
READY TO MOVE IN

All units are handed over featuring household appliances by renowned brands.

- Dishes by Bernardaud
- Flatware by Christofle
- Home lighting by Lalique
- Bed linen by Frette
- Kitchen appliances by Gaggenau







LOWER GROUND FLOOR



FLOOR PLANS

5 BED VILLA

TRADITIONAL

670 SQ M / 7 212 SQ FT



GROUND FLOOR



FLOOR PLANS

5 BED VILLA

TRADITIONAL

670 SQ M / 7 212 SQ FT



FIRST FLOOR

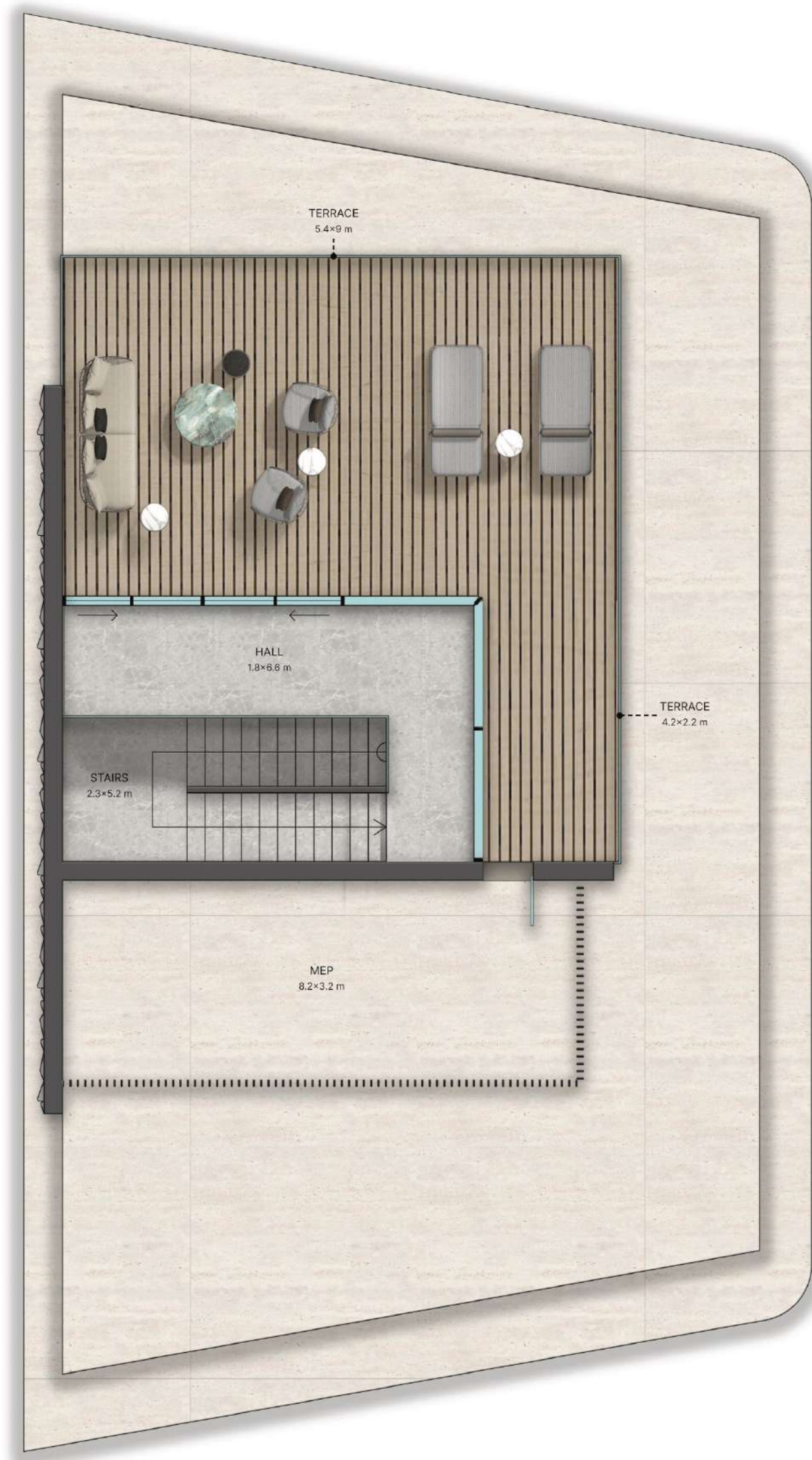


FLOOR PLANS

5 BED VILLA

TRADITIONAL

670 SQ M / 7 212 SQ FT



SECOND FLOOR





LOWER GROUND FLOOR



FLOOR PLANS

5 BED VILLA

FORMAL

670 SQ M / 7 212 SQ FT



GROUND FLOOR



FLOOR PLANS

5 BED VILLA

FORMAL

670 SQ M / 7 212 SQ FT



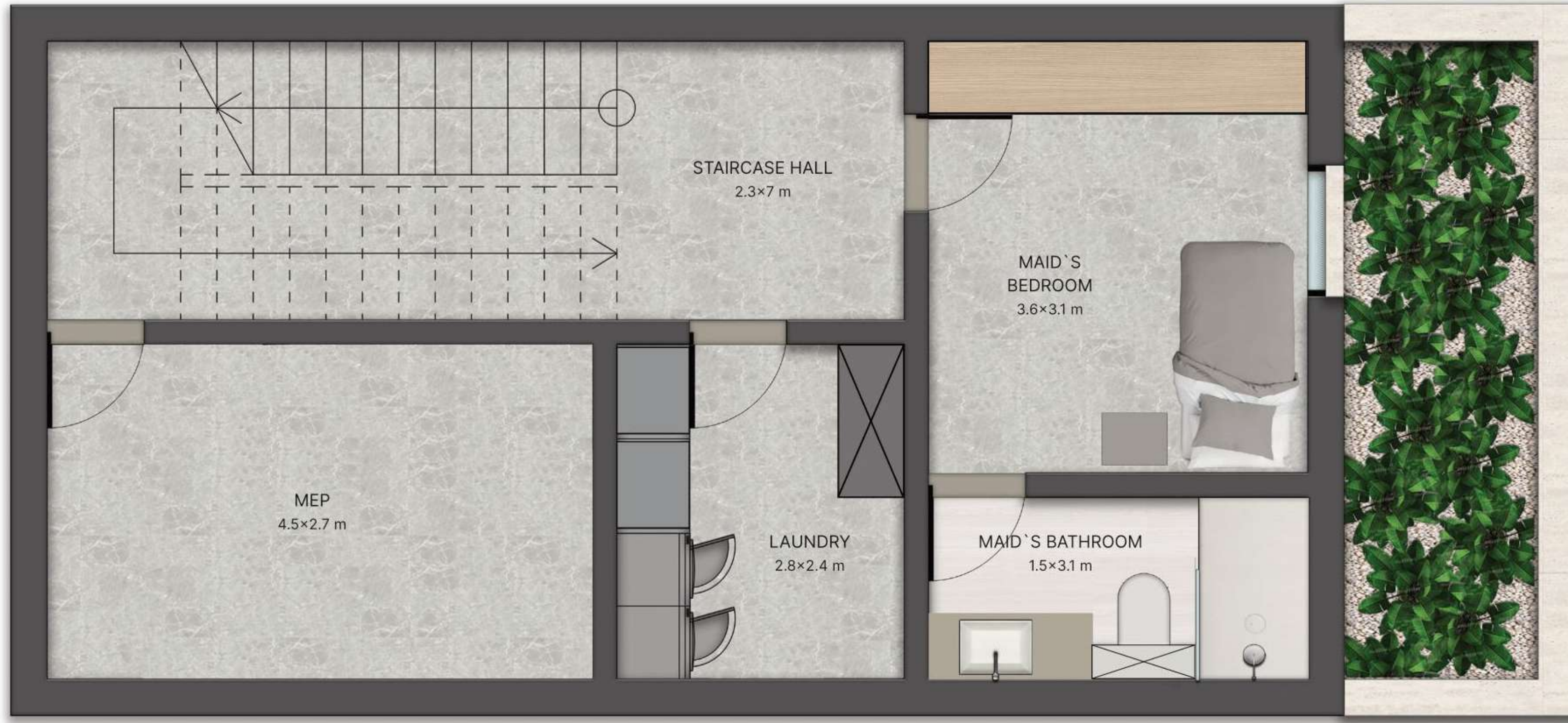
FIRST FLOOR





SECOND FLOOR





LOWER GROUND FLOOR



FLOOR PLANS

5 BED VILLA

CONTEMPORARY

670 SQ M / 7 212 SQ FT



GROUND FLOOR



FLOOR PLANS

5 BED VILLA

CONTEMPORARY

670 SQ M / 7 212 SQ FT



FIRST FLOOR









LOWER GROUND FLOOR





GROUND FLOOR



FLOOR PLANS

5 BED MANSION

TRADITIONAL

1400 SQ M / 15 000 SQ FT



FIRST FLOOR



FLOOR PLANS

5 BED MANSION

TRADITIONAL

1400 SQ M / 15 000 SQ FT



SECOND FLOOR





LOWER GROUND FLOOR





GROUND FLOOR



FLOOR PLANS

5 BED MANSION

FORMAL

1400 SQ M / 15 000 SQ FT



FIRST FLOOR



FLOOR PLANS

5 BED MANSION

FORMAL

1400 SQ M / 15 000 SQ FT



SECOND FLOOR





LOWER GROUND FLOOR



FLOOR PLANS

5 BED MANSION

CONTEMPORARY

1400 SQ M / 15 000 SQ FT



GROUND FLOOR



FLOOR PLANS

5 BED MANSION

CONTEMPORARY

1400 SQ M / 15 000 SQ FT



FIRST FLOOR







# Springfield

Properties

 +971 4 454 2588

[info@springfield-re.com](mailto:info@springfield-re.com)

[springfieldproperties.ae](http://springfieldproperties.ae)